



# Automobilia Motoring Literature & Historic Cycling

TUESDAY 17TH MAY AT 10AM

While all care has been taken with the magazine and book cataloguing, all lots in this sale are sold as having been inspected and approved for any inconsistencies or omissions prior to bidding. Some of the mascots and badges will be reproduction examples.

All purchased lots from the 17th May sale have to be removed from the sale site by midday Monday 23rd May. All uncollected lots will then be moved to off-site storage in Berkshire from where they will need to be collected. The charges are £5 per lot per day from the 24th May, and an uplift charge of £20 per lot. All outstanding fees to be paid before collection.

Images for all lots are available to view at [lawrences.co.uk](http://lawrences.co.uk)



**Auctioneers & Valuers**

In Partnership with  
Lawrences Auctioneers



**PETER CARD**

**TRANSPORT COLLECTOR  
AUCTIONS**

[peter@tc-auctions.com](mailto:peter@tc-auctions.com)  
01491 756156

## MOTORING LITERATURE

1

### TWO BOXES OF ASSORTED HANDBOOKS

About 60 booklets and Garage Parts Lists (Austin A70, A90, A125 and A135, most being for Morris and Ford from the 1950s, to include a delightful condition Morris c1926, 1931, Morris Cowley, Singer, Ford, etcetera. All in fair or better condition. (2) A/F.

£80-120 (+25% BP\*)

2

### THE AUTOCAR VOL. 28 (XXVIII), MARCH TO APRIL 1912

Comprising issues Nos. 854, March 2nd 1912, to 862, April 27th 1912, hardbound with their covers/ advertisements in rather worn and dull quarto dark green cloth with gilt lettering to the front cover and spine, the rear cover detached and spine hanging loose. Page browning, some neat paper repairs and some pages loose, but generally sound and all appearing complete.

£150-250 (+25% BP\*)

3

### THE AUTOCAR VOL. IV, JANUARY TO DECEMBER 1899

Comprising issues Nos. 167, January 7th 1899, to 218, December 30th 1899, hardbound without their covers and advertisements in a small quarto black cloth single volume, with gilt lettering to the spine, edges/ corners rubbed and a little worn, rear cover damp-stained. Very occasional light foxing to the contents, but otherwise the issues all appear to be clean and sound.

£500-800 (+25% BP\*)

4

### THE AUTOCAR VOL. XI, JULY TO DECEMBER, 1903

Comprising issues Nos. 401, July 4th 1903, to 427, December 26th, 1903, hardbound without their covers/advertisements in the standard quarto dark green publisher's cloth with gilt lettering/ decoration to the front cover and spine (numbered as Vol. 11 on the spine). Covers a little marked and edges slightly rubbed, but generally clean and sound internally, with about 100 blank leaves bound in at the rear of the volume and the title page and index pages for Vol. XI bound in at the front. Includes the extra Gordon Bennett issue for July 6th, 1903 and the supplementary colour plate of the 20 HP Wolseley Car.

£500-800 (+25% BP\*)

5

### THE AUTOCAR VOL. V, JANUARY TO DECEMBER 1900

Comprising issues Nos. 219, January 6th 1900, to 270, December 29th 1900, hardbound without their covers/ advertisements in two quarto black cloth volumes, with gilt lettering to the spines. Mostly clean and sound internally, but issue No. 265 has page browning and there are repairs to tears in Issue No. 270. Issues 223/224 and 266 to 268 are missing, as are pages 1129/1130 and 1255/6. Title page and index pages are loosely inserted at the front of the volume. (2)

£600-900 (+25% BP\*)

6

### BROOKLANDS - ROYAL RACE MEETING 1922

A rare 24pp, A4 brochure produced by The Motor Owner Magazine, and uncompromisingly of the same quality, an official programme of the race meeting held on May 20th 1922, support by H.R.H. The Duke of York (later King George VI) with the tipped-in colour photograph on its card still insitu. Excellent detailed text, colour advertisements, vignettes of the drivers and officials, details of the Industrial Welfare Society, a rare HE advertisement and much else. Some creasing and soiling to the cover, the cotton-ties intact, but will benefit from paper husbandry in due course.

£400-600 (+25% BP\*)

7

### FIAT - THE THREE GRAND PRIX OF 1922

A rare promotional folder, issued by FIAT, comprising report extracts for the 1922 French GP and the two 1922 Italian GPs. Original staples holding the 24pp editorial and results between folded beige card cover, English text. Some soiling and edge feathering to the cover, otherwise very good. Also, a circa 1922 FIAT 519 cord-tied brochure printed on light green textured card, six tipped-in colour body-style depictions with tissue covers, Italian text. (2)

£180-220 (+25% BP\*)

8

### BENTLEY - AGAIN 1928

The sixth annual Le Mans 24-hour road race won for the third time by Bentley, a publicity book of 28pp, with excellent editorial and well-defined Autocar images, printed on art paper with cream endpapers, correct cord-tied spine, a raised gilt logo to the light blue card front cover, slight discoloration to the lower edge, but hardly visible. In superb condition. Please handle carefully and with clean hands.

£400-600 (+25% BP\*)

9

### INVESTIGATION INTO THE DEVELOPMENT OF GERMAN GP RACING CARS

Between 1934 and 1939, including a Description of the Mercedes-Benz World's Land Speed Record contender. 143pp, first edition, good photographs and fold-out drawings. A good edition of this rare report by the British Intelligence Objectives Sub-Committee, their final report No.1755. There is a little fading of the cover around the spine and a little wear at the top of the spine, otherwise it is in very good condition, internal pages are clean.

£100-200 (+25% BP\*)

10

### BENTLEY PLUS FOUR 1930 PUBLICITY BROCHURE

A very rare publicity brochure celebrating Bentley's performance at Le Mans, occupying the first three places this year; the 40pp brochure retains its correct cotton-bound spine, no splits. Well-illustrated, the editorial is excellent, but the outer printed waxed DJ is missing. Printed with red text and images by Bryan de Grineau. The original card cover a little soiled.

£300-400 (+25% BP\*)

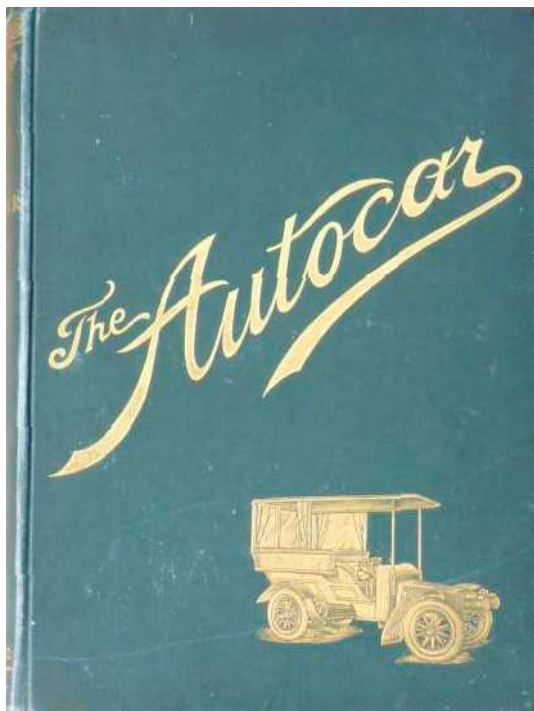
## A COLLECTION OF MG LITERATURE

11

### M.G. MAGNETTE

A 110pp, March 1934 Manual for the KA and KD Types (both 2 & 3 carburettors), with good images and detail, metal clip-held pages to a light green card cover and a fold-out gearbox, cam shaft set up and oiling charts, with a wiring diagram in the rear pocket. The cover a little feathered on the edges, the editorial good and clean.

£140-180 (+25% BP\*)



4

## 12 M.G. TWO-LITRE (SA)

Instruction Manual. 94pp and a grey card cover with metal clip-held pages, the original dated 1936, and this revised issue dated 1946. Gilt titles to the cover, excellent images and detailed text. The cover in good, clean condition, save for a small tear at the upper edge, pages crisp and free of finger marks.

£80-120 (+25% BP\*)

## 13 THE LUCK OF THE GAME

A rare softback booklet, published by the Morris Oxford Press in 1932. Authored by Cecil Kimber with a foreword by George Eyston. It is the story of the participation of the nine MG Midgets in the Ulster TT, at the Ards Circuit, held in 1932. All the motor-cars were privately entered with little support from Abingdon. The text covers the arrival, practice, racing and social aspects of the journey to Belfast. In unusually good condition, light creasing to the upper front corner, a little soiling verso.

£120-180 (+25% BP\*)

## 14 THE LUCK OF THE GAME AGAIN

24 page brochure with card covers, by Barre Lyndon describing MG successes in the 1934 TT. The text outlines the race from the standpoint of the team of three N-Type MG Magnettes which were entered by Capt. Eyston. These 1287cc un-supercharged cars were driven by Charles Dodson, Wal Handley and George Eyston. The race was won by Dodson. Well-illustrated with contemporary photographs, and finishing with a report by Dodson on how the race was won, together with the detailed results. In good, clean condition.

£120-180 (+25% BP\*)

## 15 MG - AT THE SIGN OF THE OCTAGON

A rare 1932 promotional booklet discussing the early history of the company with monochrome images, testimonials, line drawings, detailed text. 16 pages. Original staples a little rusty, centre pages loose, gentle vertical crease to the cover, a little soiled.

£180-220 (+25% BP\*)



15

## 16 MG - 'O WAD SOME POWER THE GIFTIE'

A rare 1929 large format 12pp brochure, highlighting the activities of the company at a time of their move to Abingdon, having a tipped-in depiction of the Abingdon factory covering that of Edmunds Road in Oxford. Discussed is the Capt. Samuelson success in the Monte Carlo, Chiesman in the L to L, tributes from Malcolm Campbell and others, monochrome images. Some creasing to the cover edges, some soiling, the laid paper editorial with a little foxing, otherwise sound. Also, 'Adventures in France', a 1929 12pp leaflet discussing the use of a 14/40 through France, Good, clean condition. (2)

£180-220 (+25% BP\*)

## 17 SUPREMACY M.G

A 16 page part colour brochure with tissue overlays and card covers illustrating and describing MG competition successes during 1934, ex-VCC and de-accessioned in 2002; **The Luck Of The Game Again**, a 24 page brochure with card covers by Barre Lyndon describing MG successes in the 1934 TT. Both in good, clean condition, the former with slight discolouring to the edges. (2)

£200-300 (+25% BP\*)

## 18 ACTION M.G. 1935

16-page part-colour item, showing the company's K3 and other achievements in a variety of different motoring events, Mille Miglia, La Turbie, Donington, Shelsley Walsh, County Down Trophy and others. 27cm x 18cm. In very good condition, Malcolm Campbell imaged on the front cover, staples rusty, but binding still good and tight. Light scratching and soiling on the cover.

£80-120 (+25% BP\*)

## 19 M.G. 18/80 MK 1 & MK II

A rare two-fold colour Mk 1 brochure promoting the saloons and tourers. C1930, slightly soiled, but better than most. Also, a similar brochure for the Mk II, the front and edges a little soiled, several short splits, also a two-fold version with Connolly imaging, but creased and soiled. Together with two single-sided handbills for the Weymann-bodied Mk II and another for 'Fabric Finishes' for the Mk 1. (5)

£150-250 (+25% BP\*)



20

**MG - MK III ROAD RACING BROCHURE**

A rare c.1930 large format brochure discussing the car, specifications, profile image and publicity text. In excellent condition with original staples, just light soiling to the edges of the card cover. Also, 'Six Sports Mark III', a company reprint of the May 1930 article in the Autocar, 8pp including cover, with well-defined monochrome images and the Max Millar centre spread cut-away of the car. In near perfect condition. (2)

£300-400 (+25% BP\*)

21

**RECORD OF MOTOR RACING BY GERALD ROSE**

A rare and celebrated 1909 first edition printed by George Reveirs of London, being a record of motor racing between 1895 and 1908. In 17 chapters with 143 illustrations, 7 maps and 322pp. The corners bumped and gentle splits to the spine edge, generally sound.

£400-600 (+25% BP\*)

22

**SQUIRE THE MAN, THE CARS, THE HERITAGE**

by Jonathan Wood. A rare, limited edition of only 101 dark green buckram bound copies published, this example numbered 20. A 1st edition of 422pp, with a badge emblazoned slipcase. A privately published book, commissioned by four Squire owners, it is the first full-length history of this charismatic and costly marque and has been compiled with significant co-operation of the Squire family. Signed by the author and others, the book has been impeccably researched and written, having won several awards. It comes with its original buff delivery box.

£300-400 (+25% BP\*)

23

**BUGATTI FROM MILAN TO MOLSHEIM**

by Uwe Hucke, Julius Kruta and Michael Ulrich. A rare, privately published and limited edition book of only 1000 copies, this is a book based upon the 1976 work, 'Dokumentation einer Automobilmarke' by Monaca and Uwe Hucke. An undated 1st edition, this book is essential reading and reference material for the Bugatti enthusiast, comprising 807 pages and almost 1000 illustrations, many sourced from the personal archive of Roland Bugatti. The text is in English and German. The book is in excellent condition as is its distinctive slipcase.

£800-1200 (+25% BP\*)

24

**BRITISH TRIAL DRIVERS 1919-1928 BY DONALD COWBOURNE**

With a publication date of 2001, this rare black buckram bound book with gilt titles comes with a slipcase decorated in watered-silk paper, a Nick Georgano book plate, signed by the author, 590pp, the casing slightly scuffed, otherwise in excellent condition.

£50-100 (+25% BP\*)

25

**AMILCAR BY GILLES FOURNIER & CLAUDE ROUXEL**

A limited edition of only 500 printed hardcover copies, a rare 1994 1st edition, 260pp, French text. The book describes the development of the Amilcar company, the different models produced, and details its racing records and the drivers and personalities involved. The book and dust jacket are in very good fettle, and comes with its white card slipcase.

£150-200 (+25% BP\*)

26

**THE SPORTS CAR INCORPORATING BROOKLANDS**

the title later changed to The M.G. Owners' Magazine. Three bound volumes of the Official Journal of the M.G. Car Company, produced monthly: 1936 Volume 2, No 1 (mis-numbered) (January 1936) to Volume 2 No 21 (December 1936). 1937 Volume 3, No 22 (January 1937) to Volume 3, No 33 (December 1937). 1938 Volume 4, No 34 (January 1938) to Volume 4 No 45 (December 1938). Bound with covers, brown Buckram with gilt titles. Some soiling and scuffing to the covers, but generally sound. Also, additional loose copies of Volume 1, No 3 (June 1935), Volume 2, No 21 (December 1936) and Volume 3, No 25 (April 1937) a little scuffed on the spines, otherwise in good fettle. (6)

£800-1200 (+25% BP\*)

27

**M.G. - OXFORD TO ABINGDON**

An 873pp review of the sports cars made by Morris Garages. Sales catalogues, advertisements and road test reports of the period are used to detail the specification and performance of the 14/28 MG Super Sports, the succeeding Flat Rad 14/28 and 14/40 models and the 18/80. Importantly a re-assessment of Cecil Kimber's methods of operating the MG business. A very clean copy with DJ. Also, Early MG. with a picturesque DJ, 239pp, 1989 hardbound edition, and two MG tuning books. (4)

£80-120 (+25% BP\*)

28

**TRANSPORT BIOGRAPHIES**

Henry Ford, Parry Thomas, Shelia Van Damm, Dudley Noble, Lord Nuffield, The Brabazon Story, Rolls of Rolls-Royce, etcetera. All in good fettle. (21)

£50-100 (+25% BP\*)

29

**THE SUNBEAM THREE-LITRE 1910-1930**

by Clive Millar and B. Dowell. 352pp, with monochrome photographs and line drawings. In almost perfect unread condition.

£20-40 (+25% BP\*)

30

**LIVRE D'OR DE LA SOCIÉTÉ FRANÇAISE HISPANO-SUIZA**

by Louis M. Massuger. À La Gloire Des Aviations Française Et Alliées (Guestbook of the French Society - Hispano-Suiza: 'To the Glory of French and Allied Aviation). A 1st edition, 4vo, published by Les Presses de Draeger Freres in 1924, 141pp in imitation khaki plain pages, monochrome images featuring three inserts and Marc Birkigt the founder of Hispano-Suiza. The green leather binding with gilt tooling, some pages a little loose, otherwise in very good condition.

£120-180 (+25% BP\*)

31

**OFFICINE MECCANICHE (OM)**

by Alessandro Silva. A 1st edition of this well-illustrated book, published by Fondazione Negri using much material from their archives, and records the men, the domestic cars and the races. Monochrome and colour, the text is in Italian and English, 304pp, large 8vo, with an excellent DJ, condition excellent.

£80-120 (+25% BP\*)

32

**GEORGE ABECASSIS -  
A PASSION FOR SPEED**

by David Abecassis, 412pp including index, The story his racing career from 1933 to 1956 and including a full race list of 217 races together with John Heath and the HWM Works team with circa 400 races. Also, appendices on the cars built at Walton and the 30 different cars George Abecassis raced. There are individual chapters about his wartime life in the RAF, for which he won the DFC, and on his four entries in the Mille Miglia. A fascinating book with its DJ, in excellent condition.

£150-200 (+25% BP\*)

33

**CLASSIC CAR PROFILES**

being hardbound volumes containing Profiles 1-24, 25-60 and 61-96 respectively, a set. Various authors and illustrators, profusely illustrated in colour and black-and-white, published by Profile Publications Ltd., Leatherhead in 1966 and 1967, approaching 1,000 pages in total. In good, clean condition, with tight bindings. (3)

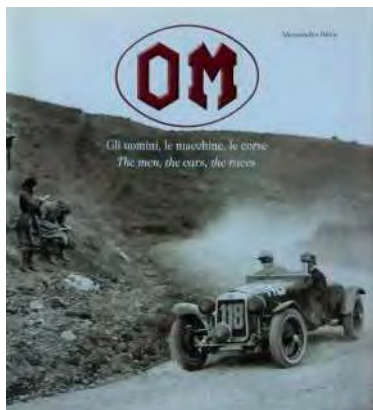
£80-120 (+25% BP\*)

34

**SQUIRE BY JONATHAN WOOD**

A 2015 publication giving the history of the company, to include an overview of the cars built, with excellent monochrome and colour illustrations. 421pp with DJ in good condition.

£150-200 (+25% BP\*)



31

35

**THE HISTORY &  
DEVELOPMENT OF THE  
SUNBEAM CAR 1899-1924**

A square-backed book published as a publicity album outlining the development of the marque, showing the models and competition cars produced and including the Coup de l'Auto, TT and Grand Prix racing cars and others. Offered as 'a souvenir of a quarter of a century of Sunbeam success & service'. 54pp, in excellent, almost unopened condition, just a hint of top and lower edge cover creases. Please handle carefully and with clean hands.

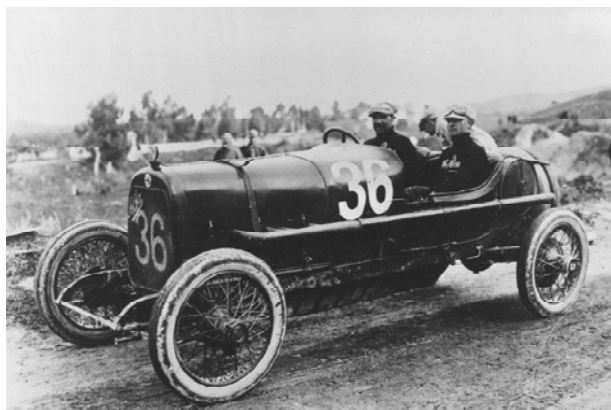
£200-300 (+25% BP\*)

36

**SIZAIRE FRERES C1927**

A detailed handbook with excellent line-drawings on 24pp with a colour-printed card cover. Also, a components guide for the 12CV Type 4 RI, with folded diagrams for the engine, steering, clutch, gearbox, rear axle and brakes. Both are in fair condition. (2)

£80-120 (+25% BP\*)



38

37

**MILLE MIGLIA**

An original 24pp edition of the publicity booklet published by MG to mark their victory in the 1933 Mille Miglia. With excellent monochrome photographs, half-tone vignettes, previous race results and a Max Millar cut-away of a K3. The correct cotton-tied textured card covers with gilt wording and fascist logo are in excellent, clean condition, as is the editorial and free endpapers. Please handle with care and with clean hands.

£100-120 (+25% BP\*)

38

**ALFA ROMEO**

A red folder of assorted cars from various periods. Many copy photographs, some cuttings, most with captions verso. Mainly 5 x 8 ins (13 x 18cm). 50 clear plastic pockets, 120+ images.

£120-180 (+30% BP\*)

39

**NAGANT & NAGANT - HOBSON**

A folder for this unusual manufacturer, covering the period 1900-1931. The photographs include a number of excellent postcards, good views of cars in social scenes, some coach-builders, such as Shaw, Kellner, De Ruyttes, etcetera, motor shows, several racing cars. Most have manuscript or typed captions verso.

£120-180 (+30% BP\*)

40

**GRAND ALBUM ILLUSTRÉ DE  
L'INDUSTRIE AUTOMOBILE**

A superb large format book, edited by Huguet et Minart for the Automobile Club de France between 1900 and 1903. Red and green cloth, gold-blocked 11 x 15 inches, this being Volume 3 of 1902, 116pp. Core language is French, with important sections tri-lingual, French / English / German. Copiously illustrated in monochrome. A standard reference for French veteran cars, the original French publications ran to only four volumes and originals are, today, impossible to find. These reprints were produced by the late Cecil Bendall for the V.C.C. in 1983.

£100-150 (+25% BP\*)

41

**BROOKLANDS BY  
WILLIAM BODDY**

A limited printing numbered 1222 of 2000, published 2001. The book is based on the author's "The History Of Brooklands Motor Course 1906-1940" published in 1957. This re-titled edition has been further revised and expanded, 479pp. Also, The History of Motor Racing, 1977, 314pp, with DJ, and The Golden Age of Motor Racing, 2005, 192pp with DJ. All in good, clean condition. (3)

£80-120 (+25% BP\*)





50

**42**  
**MOTOR SPORT VOLUME 5**

A nicely produced, limited edition reproduction of this rare volume, original copies of any of the three magazine issues that make up the volume October/November 1928; May 1929 and June 1929. Also, included in the facsimile hard binding are indexes for volumes 2, 11, 26 etcetera. A Nick Georgano bookplate on the first fly leaf.

£80-100 (+25% BP\*)

**43**  
**MOTORING ANNUAL 1906**

An illustrated motorist's year book, 510pp, many advertisements, period articles, various club details and members lists, event results, personality photographs. The editorial in good fettle, the cover a little soiled and loose.

£50-100 (+25% BP\*)

**44**  
**WITH MOSS IN THE MILLE MIGLIA**

by Denis Jenkinson. A very rare and interesting hardbound volume of text and photographs, being a special reprint of 1955, 1956 and 1957 Motor Sport articles, printed in 1968 by Grenville Publishing and printed by Tee & Whiten. Signed in ink by Stirling Moss and Denis Jenkinson on the title page. Bound in light green cloth with a dark green spine and gilt title on the spine.

£150-200 (+25% BP\*)



54

**45**  
**MOTOR RACING SCRAPBOOKS**

Five of a series of large 8vo, numbered hardbound books of the immediate post-WWII era; a rare issue No 10 - The Boy's Book of Racing Cars, published Oct 1948 with a Nockolds illustration on the hard cover; No 7 - A History of the French GP 1906-1914 by Kent Karlake; No 4 - The World's Land Speed Record by William Boddy; No 9 - Maintaining the Breed by John Thornley and No 3 - The Story of E.R.A. without its cover. (5)

£100-150 (+25% BP\*)

**46**  
**AUSTIN SEVEN COMPETITION HISTORY**

A 1st edition published in 2006, correctly without a DJ, but has an illustrated slipcase. A useful book on competition cars 1922-1939, 370 pp, limited edition of 500 copies, with many excellent monochrome photographs and illustrations and a very informative text. In very clean, sound condition.

£100-150 (+25% BP\*)

**47**  
**MORRIS ISIS SIX 1929/1935**

A large 8vo Service Information book, with various sections covering wiring, mechanics, timing overhaul and much else. Suitable for MG 18/80. Also, a similar book for the Morris Six (Oxford) from July 1928 to December 1929, again suitable for 18/80 products. Both hardbound in a brown cloth with gilt titles. (2)

£80-120 (+25% BP\*)

**48**  
**DAIMLER MOTOR SYNDICATE LTD**

A very important (August ?) 1895 advertising broadsheet for the Daimler Motor Syndicate Ltd of 95 Billiter Buildings, 49 Leadenhall Street. This document illustrates the Daimler engined Panhard Levassor and the Phaeton which took part in the June 1895 Paris to Bordeaux race, often referred to as the first automobile race although in reality the 1894 Paris - Rouen holds the title. On the recto are three extracts from newspapers, tightly type written by F. R. Simms, which discuss Evelyn Ellis' journey from Micheldever to Datchet and the benefits of automotive power. The Daimler Motor Syndicate was managed by Frederick Simms; he sold the going concern to H. J. Lawson in November 1895. This document is in remarkably good condition, with only light foxing to the top and lower edge, and a very small crease to the lower front corner. 8 x 13 inches.

£200-400 (+30% BP\*)

**49**  
**GREAT HORSELESS CARRIAGE CO. LTD**

A large, circa-June 1896, double-sided promotional broadsheet issued after the launch of the company 'To develop this new vehicle industry; to acquire licenses for patents, purchase master patents and receive royalties, to license and form subsidiary companies to sell foreign rights and concessions and to generally establish and work the trade in this country'. The document consists of 18 steel-cut images showing not only a view of 'The Motor Mills' but also a variety of vehicles to include the Kane (Thomas) & Pennington still-born vehicles: the Garrard & Blumfield 'Electric Brake' and various other machines and prices based on 'The British Motor Syndicate Ltd'. master patents. Supporting the statements and images are 29 separate press reports, the earliest being dated 7 Dec 1895 and the most recent, 11 May 1896 from Wheeling magazine, describing the share floatation of the company. The Great Horseless Carriage Company Limited was placed in liquidation in January 1898. This significantly historic document measures 40 x 15 inches (102 x 38cm), and is in excellent condition, save for three horizontal gentle folds, slight foxing at the upper edge and three small tears. Both sides illustrated.

£400-800 (+30% BP\*)

**50**  
**M.G. AUCTION**

An original poster advertising the sale of the contents of the MG Plant in a three-day sale in March 1981, 30 x 20-inches. Also, an MGCC event advertising poster and MG Girl, six reproduction posters of the original artwork featured on the front cover of Autocar in the mid-1930s. All in good, clean condition. (8)

£50-100 (+30% BP\*)

51

**THE 1903 GORDON BENNETT**

A rare La Vie Au Grand Air magazine supplement imaging all twelve of the racing cars and their drivers entered in the Irish event. Central vertical fold, well-defined images, held in a mount. 13 x 20-inches.

£100-200 (+30% BP\*)

52

**THE MOTOR**

Two volumes; the first Motor Cycling & Motoring (the magazine's original name), Volume 1, No 1 (Feb 1902) to Volume 1, No 26 (August 1902), bound with an index. Also, Volume 6, No 132 (Aug 1904) to No 157 (Jan 1905) Buckram bindings, in good sensible condition. (2)

£200-300 (+25% BP\*)

53

**LUCAS THE FIRST 100 YEARS**

by Harold Nockolds. A two volume set, reprint 1977 of the first volume, 1978 1st edition of volume 2, this signed by the author to Nick Georgano. In good sound condition with DJs, slightly feathered on the edges. (2)

£100-150 (+25% BP\*)

54

**MICHAEL B. WRIGHT (BORN 1935)**

A striking watercolour study (with bodycolour and pencil) on artist's board, in horizontal format, depicting two pre-World War One racing cars numbered 1A and 2B speeding towards the viewer along a tree-lined race-track, with another vehicle in the distance. Signed and dated by the artist in pencil, M. B. Wright 1969, in the lower left-hand corner. Unframed, dimensions of the board 39.5 x 53.5cm. Good condition.

£250-350 (+30% BP\*)

55

**A BP ADVERTISING SIGN**

With French text, some damage, colour discoloration, a rusting rear as illustrations. These signs have been reproduced and in consequence there is no qualification as to the manufactured year. Viewing is recommended. 44 x 70cm.

£350-450 (+30% BP\*)

56

**MOTOR SHOW PROGRAMMES**

Various bound programmes ranging from the Scottish Motor Show 1957, Roads & Transport Exhibition 1919, Racing Car Show, Australian all British Motor Show 1924-1925 and many others, most hardbound, excellent reference material, with some quality photocopies. (18)

£200-400 (+25% BP\*)

57

**A BOX OF PROMOTIONAL VEHICLE PHOTOGRAPHS**

most being post-WWII, both colour and monochrome. Generally sound condition, a large quantity, filling over half of a wine box. (Qty)

£50-100 (+25% BP\*)

58

**REFERENCE MATERIAL**

A good selection of soft-back pamphlets, catalogues, auction catalogues and promotion paperwork covering toys and games. Most in good, clean condition. (Qty)

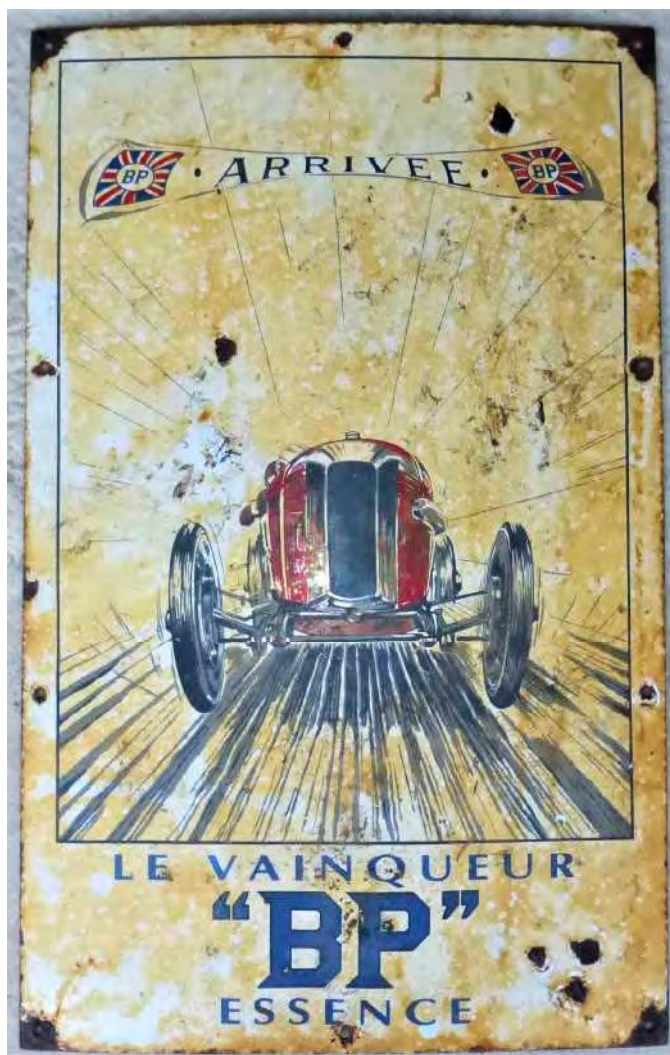
£80-120 (+25% BP\*)

59

**STONE & COX MOTOR SPECIFICATIONS**

A good run of small 8vo books, the earliest being 1924 and latest 1980. Some have been professionally bound in blue buckram, as illustrated. A selection photographed. (30)

£200-300 (+25% BP\*)



55

60

**VETERAN & VINTAGE PERIOD PHOTOGRAPHS**

Circa 1905, measuring 9 x 11-ins a group photograph of various Anglesey registered cars, Wolseley, Oldsmobile, Daimler. Some light damage, laid to card. Also, the Ruston & Hornsby Football Club.

A photograph of the 1925-26 team with team member names below, 10 x 12-inches. Also, a large 1969 photograph of the Sotheby auction of cars at Earls Court with a Bugatti child's car in the foreground, a large photograph of a lightweight veteran car and other items. (6)

£80-120 (+30% BP\*)

61

**FRENCH MOTOR MUSEUM**

A series of 21 monochrome good copy photographs, depicting vehicles in the original French National Museum store.

£50-100 (+30% BP\*)

62

**SALON DE L 'AUTOMOBILE ET DU CYCLE**

Five official programmes for the Paris Salon of 1951, 1954, 1958, 1961 and 1962. Bound with covers and advertisements in light-blue buckram with gilt titles. Also, the Geneva Salon for 1947 and 1988, both similarly bound in yellow buckram, all with M.J. Worthington-Williams' initials on the spines. (7)

£100-200 (+25% BP\*)



63

**THE CAR OLYMPIAD**

Rarely offered today, being a review of the Olympia staged motorcar show for the years 1920, 1921, 1922 and 1926 (quality photocopy). Uniformly bound in red buckram with gilt titles and M.J. Worthington-Williams' initials on the spines. (4)

£200-300 (+25% BP\*)

64

**'E-TYPE JAGUAR & MOTOR JOURNEY TO THE U.S.A'**

Dated 1949, 17pp of typed notes written by the then editor of the magazine, Christopher Jennings, the front label of the file announcing that it is a single copy. Also, a May 1958 typed two-page document headed 'Secret and Confidential' by C. Jennings to R. E. Dangerfield, the text commencing: 'I spent the past weekend in a car of such sensational potential... The car is a Jaguar, known at the moment as the *E-Type*'. Jennings goes on to describe his use of a prototype supplied to him by William Lyons. Also, seven pages of typed copy letters from Christopher Jennings to a Lord Crucible regarding the road test of a Harrier. Three historic documents. (3)

£100-200 (+25% BP\*)

65

**1908 BERLIET BROCHURE**

With full-page colour cartoons and vignettes by René Vincent, a supposed visit to the Berliet works in a quality printed square-backed publication, together with excellent side-profile depictions of actual body-styles on various chassis, printed on art paper. In need of some remedial repair to the spine, and some loose pages, the front cover in good fettle.

£80-120 (+25% BP\*)

66

**VINTAGE MOTORCYCLE CLUB**

Dated April 1946, and multipage bound book of typed A4 pages, the first being a proposal about forming the V.M.C., the remaining pages being copies of the Bulletin Issue 1 to Issue 24 dated April 1948 together with a copy of Issue 51 dated July 1950.

£50-100 (+25% BP\*)

67

**MOTOR CAR INDUSTRY ANNUALS**

Cars of Today 1920, 1921, 1932. Automobiles of GB 1921. Les Marques D'Automobiles and Glass's Directory 1963, New Cars 1910-1912 and The Garage & Motor Agent Gazette 1913-1924. All bound in cloth. (8)

£100-200 (+25% BP\*)

68

**BRITISH TRIAL DRIVERS 1902-1914 BY DONALD COWBOURNE**

One of only three leather-bound presentation copies with a manuscript dedication by the author on the front free endpaper, 2003, 602pp, with gilt titles, typed letter and a slipcase with a maroon cloth covering, slightly scuffed, otherwise in excellent condition.

£50-100 (+25% BP\*)

69

**BRITISH TRIAL DRIVERS 1902-1939 BY DONALD COWBOURNE**

The 1929-1939 book being a leather-bound presentation copy with a manuscript dedicated to M.J. Worthington-Williams by the author, 1998, 720pp, with a slipcase and green cloth covering, slightly scuffed, otherwise in excellent condition. Also, British Trial Drivers 1919-1928, a copy given to M.J. W-W by the author, with typed letters discussing same, with a slipcase, 590pp, and British Trial Drivers 1902-1914. a copy given to M.J. W-W by the author in 2003, with a typed letter discussing same, with a slipcase covered in maroon cloth, 602pp, the casing slightly scuffed. All in very good condition. (3)

£100-200 (+25% BP\*)

## A COLLECTION OF MOTOR CAR MASCOTS



70

70

**AUSTIN MOTOR COMPANY**

A Victory of Motion Trumpeter, being an approved mascot for Austin motor cars dating from the early 1920s. nickel-plated on well-defined features, the trumpet undamaged and the winged wheel in unusually good condition, the dais inscribed, Austin Motor Co., and mounted on an internal thread radiator cap. The mascot 13cm high.

£700-900 (+30% BP\*)

71

**THE WARWICK VASE**

A depiction of the celebrated highly detailed vase housed in Warwick Castle, this rare mascot was sold with profits helping the upkeep of the fortifications, and examples were used on staff and family motor cars. This example retains its original display stand. 'Reg Dn App'd For' inscribed inside the vessel. The mascot 6cm high.

£180-220 (+30% BP\*)

72

**PHINEAS MASCOT**

A standing figure of a Scotsman, chromium-plated on a turned wood base. Inscribed UCL & UCH, the Phineas has been the Students' Union at UCL's mascot since March 1900 when, as part of a celebration to mark the relief of the siege of Ladysmith during the Boer War, students stole Phineas - a wooden Phineas highlander statue - from outside Catesby's, a local department store on Tottenham Court Road. Good definition, 16cm high.

£200-300 (+30% BP\*)

73

**THE PILOT**

A rare mascot by Augustine & Emile Lejeune, imaging a sailor standing next to a binnacle. Integral dais in brass, display-mounted, pre-1932, marked AEL. 13cm high.

£250-300 (+30% BP\*)



74

**MR PIG - THE DANDY**

A rare hollow cast mascot of well-detailed but petit proportions, with a hint of original gilding. This mascot was purchased from the Dan Smith sale in December 2000. Display-mounted, 11cm high.

£250-300 (+30% BP\*)

75

**CADILLAC MOTOR CORP**

A spring bonnet (hood) mascot having five colour enamels, in good, clean condition. Display-mounted, chromium-plated, 1970/1980s.

£100-120 (+30% BP\*)

76

**TROJAN HEAD**

A hollow cast aluminium mascot, as used with Trojan commercial vehicles (and some motor cars), mounted on a turned wood base, 11cm high.

£200-300 (+30% BP\*)

77

**DUNLOP ADVERTISING DISPLAY MASCOT**

A very rare promotional mascot in bronze, retaining its lacquered finish, with a sprung moving head, inscribed DUNLOP on the cylindrical base, a single threaded mounting bolt, believed used with commercial vehicles, display-mounted, 15cm high.

£1000-1200 (+30% BP\*)

78

**A HUNTSMAN OR STEEPLE CHASER MASCOT**

A two-dimensional style mascot with good equine and fence detail, early style chromium-plating on brass, now a little worn. Purchased from the Dan Smith auction sale of mascots in December 2000. Display-mounted, 15cm high.

£150-200 (+30% BP\*)



79

79

**HISPANO SUIZA 'LA CIGOGNE VOLANTE' MASCOT**

An early and correctly unsigned mascot dating c1919, designed by François Victor Bazin. Mounted on an external threaded H6B radiator cap, the nickel-plating on bronze finish now with a delightful patina. The original stork emblem was used by the French flying ace Georges Guynener on his Hispano Suiza engine WWI aircraft. Total height 16cm.

£800-1000 (+30% BP\*)

80

**ALVIS 20-25HP MASCOT**

An eagle mascot with good feather detail, mounted on a black display base, nickel-plated on bronze, 1930s. The mascot 9cm high.

£150-200 (+30% BP\*)

81

**RILEY KESTREL MASCOT**

A finely cast mascot with excellent feather detail, standing on a ball with an indistinct 'R' stamped, nickel-plated and in excellent condition. Display-mounted, the mascot 11cm high.

£200-300 (+30% BP\*)

82

**LEAPING SALMON MASCOT**

of the type manufactured by Lejeune, chromium-plated on brass, good detail and display-mounted. 11cm total height.

£120-140 (+30% BP\*)

83

**THE AVIATOR MASCOT BY JOHN HASSALL**

A rare hollow cast mascot by the well-known cartoonist, with the inspired sprung and moveable glazed earthenware head and brass helmet. These appear to have been the third in the series, being advertised from 1918 and still available, probably from stock, in the mid-1920s. The mascot has the standard double mounting studs, correct spinning propellor, and Hassall engraved signature at the rear. Not mounted. 11cm high.

£1000-1400 (+30% BP\*)



83





90

86

**RUSTON HORNSBY - LINCOLN IMP MASCOT**

A petit mascot, as used with the marque, mounted on a hockey puck base, original purchased from the Dan Smith collection in 2000. 10cm high.

£120-150 (+30% BP\*)

87

**FELIX THE CAT ACCESSORY MASCOT**

A two-dimensional mascot dating from the popularity of the cartoon character of the 1920s, manufactured by the London Metal Finishers company, nickel-plated on brass, interesting detail, 12cm high.

£250-300 (+30% BP\*)

88

**THE WHISPER MASCOT**

Originally designed by Charles Sykes, a little before he sketched the more common Rolls-Royce 'Spirit of Ecstasy' mascot. The late Lord Montagu ordered a number of 'evocations' of his original in the 1960s, of which this is a rare example. This exemplar, offered in very good condition, retains its nickel-silver plating over the bronze base metal, with correct Charles Sykes signature. Highly attractive and a rare opportunity to own one of the rarest mascots designed produced.

£800-1000 (+30% BP\*)

89

**ROLLS-ROYCE KNEELING SPIRIT OF ECSTASY**

With correct under-wing markings, a mascot suitable for Rolls-Royce PIII, Wraith and post-WWII cars. chromium-plated, with head band detail. Not display-mounted. 8cm high.

£400-600 (+30% BP\*)

90

**SPEED GOD BY G. POITVIN**

A high quality hollow cast accessory mascot, nickel-silver on brass, with a foundry socle of 'Contentot Le Livera' foundry to the side of the base and 'Made in France' engraved at the rear. Originally offered in the 1920s by Hermes in Paris, this example was retailed under licence by Finnigan's in London. Display-mounted, numbered 1568, 13cm high.

£1000-1500 (+30% BP\*)

91

**WILLIAM YOUNGER & CO**

A promotional accessory mascot depicting a bearded man holding a pint of beer. These were given as mementos to company product stockists in the 1930s. A petit mascot, display-mounted, chromium-plated, 8cm high.

£150-180 (+30% BP\*)

92

**CHRYSANTHEMUM GIRL**

by Augustine & Emile Lejeune. An unusual, nickel-plated mascot depicting a young lady's head mounted on a flower stem. Inscribed AEL verso, so dating pre-1932. Display-mounted, 11cm high.

£220-260 (+30% BP\*)

93

**HALTE-LA BY LOUIS MALESPINA**

An accessory mascot, 'Stop it', depicting a French street cleaner with a brush and bucket supposedly involved in the storming of the Bastille in revolutionary France. Manufactured by Richter in Paris, signs of original nickel-plating, good detail and patina, correctly inscribed. Display-mounted, 11cm high.

£500-700 (+30% BP\*)

94

**EAGLE MASCOT**

A well-defined and imposing mascot with an early style of chromium-plating, a wing span of 24cm, and of the type fitted to the bulkhead of a late 1920s six-cylinder HE, as illustrated.

£200-250 (+30% BP\*)

95

**PONTIAC INDIAN CHIEF**

A ruby red glass mascot fitted to a chromium-plated radiator cap, no obvious damage, a 1927 design. The mascot 9cm high.

£120-140 (+30% BP\*)



93

84

**SALVATION ARMY EMBLEM MASCOT**

A chromium-plated insignia with Blood & Fire inscribed in red, and 1929 - SA - London engraved verso. Mounted on a radiator cap, 17cm high.

£180-220 (+30% BP\*)

85

**ROVER - A STANDING VIKING MASCOT**

With good detail and retaining the often missing spear, nickel-plated, mounted on a small stand, in excellent, original condition. 14cm high.

£300-400 (+30% BP\*)

96

**TERRIER MASCOT**

A hollow cast dog with good hair detail, mounted on a stem and radiator cap. Once in the Dan Smith collection: Smith thought that the covered rear aperture was perhaps a receptacle for a spare ignition key. 15cm total height.

£150-200 (+30% BP\*)

97

**WILD SWAN IN FLIGHT - 'CYGNE' BY FREDERICK BAZIN**

A rare but popular design today, straw-coloured nickel-plating with excellent detail, artist's inscription on the edge of the mount, 12.5cm long.

£450-650 (+30% BP\*)

98

**PEGASUS**

An Art Deco style mascot of applied three-dimensional form, late 1920s nickel-plating in good fettle, mounted on a radiator cap. Total height 12cm.

£120-140 (+30% BP\*)

99

**THE RUNNER**

A mascot offered by Jesus College Oxford to the competing athletic teams in the 1920s, this design dated 1920. Display-mounted. 14cm high.

£120-140 (+30% BP\*)

**THE ANDREW RICHIE BICYCLING REFERENCE LIBRARY**

100

**CYCLING MAGAZINE**

Volume One, number 1 to Volume Two number 52 of 1892, bound in two books, without covers. Also, dismembered volumes from the years 1895, 1897, 1898 and 1899. A/F (6)

£80-120 (+25% BP\*)

101

**COUREUR MAGAZINE**

from January 1959 to November 1960, bound in two volumes, with advertisements. (2)

£80-120 (+25% BP\*)

102

**LE CYCLE - LA REVUE DES SPORTS**

for the 1896 period, dismounted copies, without covers, housed in an archival box. A/F.

£80-120 (+25% BP\*)

103

**THE SCOTTISH CYCLIST**

A single volume 5, covering the period January 1892 to November 1892, bound without covers.

£80-120 (+25% BP\*)

104

**C.T.C. GAZETTE**

Five volumes for 1895, 1896, 1897, 1898 and 1899. The first four in publisher's or club bindings. A/F. (5)

£80-120 (+25% BP\*)

105

**BICYCLING BOOKS**

A box of 22 books, to include: The First Fifty years of the Catford Cycling Club, a quarter leather edition of the 1894 Badminton Bicycle Book, Cycling by Griffin, Wheels of Chance, Art and Pastime of Cycling by Mecredy, etcetera. A/F (22)

£100-200 (+25% BP\*)

106

**LE VELOCE SPORT**

16 copies of this rare French cycling newspaper, a single copy dated 1888, the remainder dating from 1893. Good condition, but in need of de-acidification. Each held in a plastic folder. A/F.

£100-150 (+25% BP\*)

107

**LA REVUE DES SPORTS**

Over twenty copies of this rare French newspaper, majoring on cycling and other sports. Good condition, but in need of de-acidification. A/F.

£50-100 (+25% BP\*)

108

**VELOCIPEDE**

Seven folders containing research material for the early period of cycling. Each folder contains copies and photocopies of original material, the folders entitled: Willard Sawyer, West Coast Velocipede, Boneshakers, de Febyre, Hobby Horse, etcetera. A/F

£80-120 (+30% BP\*)

109

**QUARTER & HALF GLASS-PLATE NEGATIVES**

Four boxes containing small boxes of assorted negatives, most appear to be 20th century, almost all are titled, and almost all are in good condition and ready for processing. Titles include: Weird Bikes, Building Hern Hill Track, Personalities, R H Harris, Catford CC Hill Climb, Tour de France, Time Trials, Warrington 100, Harris at Hern Hill, etcetera. A/F (Qty)

£400-600 (+30% BP\*)

110

**EARLY CYCLING REFERENCE MATERIAL**

A box of folders entitled: 'Choppy' Pictures, Racing 1890s, Zimmerman Book and Pictures, Cycling Photographs (no originals), George Moore Illustrations, and copy photographs and images used in the 1975 publication, King of the Road. (A box)

£100-200 (+30% BP\*)

111

**STRIP & GLASS PLATE NEGATIVES**

Mainly Tourist Trophy and Miscellaneous, with strip negatives of cycling events in the 1930s. A/F. (two small boxes).

£80-120 (+30% BP\*)

112

**EARLY CYCLING REFERENCE MATERIAL**

A box of five folders entitled: Catalogues, Emergence of Safety, US Cycling Post 1945, etcetera, with some original photographs, but very general. (A box).

£80-120 (+30% BP\*)

113

**QUEST FOR SPEED**

A folder of reference material, together with files named Dick Swan, monochrome prints, and colour transparencies. A tray.

£80-120 (+30% BP\*)

114

**ASSORTED MODERN CYCLING MAGAZINES**

Together with large reproduction photographs, a Zimmerman file, and other monochrome images. A tray.

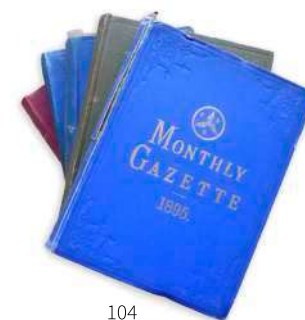
£80-120 (+25% BP\*)

115

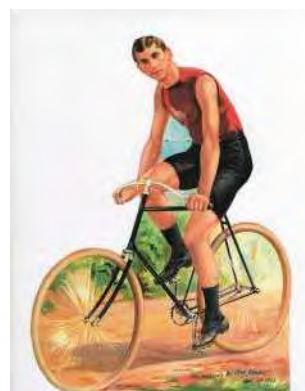
**THE IRISH CYCLIST & ATHLETE**

A dismembered copy covering the 1890 period, a collapsible cup, badges and CD with photographs, a New Departure advertising pin, and other items. (Qty)

£80-120 (+30% BP\*)



104



110



## HISTORIC CYCLING

116

### A C1910 JUVENILE TILLER-STEERED TRICYCLE

Drive-operated by lever-driven crank, the cast and shaped tubular frame appears sound, and the 18-inch wheels are in original condition, with used but serviceable tyres. The adjustable seat has been recovered in black leatherette.

£100-200 (+30% BP\*)

117

### A COVENTRY MACHINIST CO. 'CHEYLESMORE'

Open-Front Tricycle, with 44-inch rebuilt driving wheels, a 20-inch rear steering wheel, finished in black paint, it includes a correct style wood seat and backrest, dual chain drive, stirrup handle steering and a wood-turned brake handle.

£2000-3000 (+30% BP\*)



117



119

118

### A FABRIQUE NATIONALE DE HERSTAL 'SHAFT DRIVE' GENTLEMAN'S BICYCLE

With a 26-inch frame, 28-inch wheels, 16-inch curved-flat handlebars, 7-inch cranks, the remains of its black enamel finish, and wood mudguards. The drive arrangement appears to be complete and the often missing end cap is still in situ.

£400-600 (+30% BP\*)

119

### DURSLEY PEDERSEN GENTLEMAN'S BICYCLE

A c.1910 size 4 machine in fine, rideable condition, having a restored saddle, correct springs and leather strap, three-speed SA gearing with a correct quadrant change, correct front and rear centre-pull block braking operated by inverted levers attached to semi down-turn handlebars and period grips, Westwood rims and good tyres, 7-inch cranks and sports rat-trap pedals, rear hub mounting step and a green enamel frame. Other features include a rare front DP rack, brass to style, narrow section pump, Lucas double-ring bell, and a correct and period down tube leather tool pouch.

£3000-4000 (+30% BP\*)

120

### SHORTER & SONS 'DAISY BELL'

A multi-coloured underglaze flower vase portraying two riders on a tandem bicycle. The largest manufactured of the set, in excellent condition. 11-inches (28cm) high (1)

£80-120 (+30% BP\*)

121

### DAISY BELL MUSICAL PITCHER

to include two complementary beer mugs, each with working musical movements, bright underglaze majolica-style colouring. (3)

£80-120 (+30% BP\*)



121

122

**INTERNATIONAL CYCLE HISTORY CONFERENCE - PROCEEDINGS**

Four volumes, with their original DJs, Nos 4, 5, 6 and 8. (1993/4/5 and 1997) All in good, clean condition. (4)

£80-120 (+30% BP\*)

123

**A 1930'S CROWN DEVON MUSICAL 'DAISY BELL' PITCHER**

and two matching tankards, the sides moulded with the scenes of Daisy and her bridegroom, and the rear bearing an underglaze transfer of the popular lyrics. With clockwork musical movements in each, which play the Daisy Bell tune, painted in underglaze colours with a honey finish. 8-inches high. (3)

£100-150 (+30% BP\*)

124

**A RALEIGH ENAMEL ADVERTISING SIGN**

A single-sided two-colour sign, the rider's hand missing, with some enamel loss and chipping. 48 x 47-inches. A/F.

£50-100 (+30% BP\*)

125

**A RALEIGH ENAMEL ADVERTISING SIGN**

A rare, single-sided three-colour, yellow, white and black sign, the rider's hand missing, and with other metal loss and rusting. 30 x 40-inches. A/F.

£50-100 (+30% BP\*)



131

126

**A STURMEY-ARCHER ENAMEL SIGN**

advertising their three-speed and Tricoaster hubs, with much rusting to the edges, chipping, but image and text fair. 24 x 36-inches. A/F

£50-100 (+30% BP\*)

127

**A RUDGE-WHITWORTH BICYCLE ADVERTISING SIGN**

A single-sided sign, with some metal loss and rusted chipping. 30 x 30-inches. A/F.

£50-100 (+30% BP\*)

128

**A HUMBER ADVERTISING SIGN**

single sided, with much missing enamel and rusting, 23 x 49-inches. Together with the top half of a Hercules Bicycle enamel sign. 39 x 48-inches. A/F. (2)

£50-100 (+30% BP\*)

129

**A JOHN BULL ENAMEL SIGN**

A three-colour convex profile sign, in orange, white and black enamels, some edge chipping, but generally sound. 17 x 48-inches. A/F.

£50-100 (+30% BP\*)

130

**A J. ADAMS & SONS CYCLE ENGINEERS HANGING SIGN**

A double-sided sign in fair condition. 24 x 36-inches. A/F.

£50-100 (+30% BP\*)

131

**A RALEIGH ENAMEL SIGN**

A two-colour pictorial sign showing a bicycle rider pursued by a lion. Some edge chipping. 24 x 36-inches.

£50-100 (+30% BP\*)

132

**A BSA MULTI-COLOURED SIGN**

single-side with clear wording, some metal loss and rusting, but a serviceable image. 28 x 44-inches.

£50-100 (+30% BP\*)

133

**THE WHEEL WORLD VOLUME II**

A bound copy from issue No 19 (January 1885) to No 24 (June 1885) with good George Moore wood-block images and text. Also, a good collection of books to include: The Balkans by Bicycle, The Ingenious Mr Pedersen, Cyclorama by Tom Brown, The Art & Pastime of Cycling, together with some 1920s copies of Cycling magazine and The Belle Revue from 1965 to December 1968. All in good, dry condition. (Qty)

£50-100 (+25% BP\*)

134

**BARTHOLOMEW'S CYCLING MAPS**

A good selection dating between 1911 and 1933, various types, together with other maps and pocket touring books. (Qty)

£50-100 (+30% BP\*)

135

**ARMY CYCLIST CORPS**

Two rare badges, together with various CTC badges, King Alfred Wheelers, County of London Cyclists, Kingston Wheelers Cycle Club, Tandem Club, Dundee Cycle Club assayed silver medallion awarded to Scott-Boyd, several headstock badges, a 1937 assayed silver Raleigh Jubilee Associates plaque, and other lapel insignia. (Qty)

£100-200 (+30% BP\*)

136

**WILLIAM HATHERELL - LITHOGRAPHIC PRINT**

'On Pleasure Bent', a double page magazine supplement c1890, framed and glazed, 13 x 18-inches. Also, a framed and glazed set of Player's Cigarettes Bicycling series cards. 15 x 20-inches. (2)

£50-100 (+30% BP\*)

137

**RUDGE WHITWORTH CYCLE CO**

A nickel-plated cigarette-holder, with a three-colour advertising button to the centre, together with a combination polished brass cigarette packet-holder and vesta case with a Rudge insignia. (2)

£100-140 (+30% BP\*)

138

**SHARP - BICYCLES AND TRICYCLES**

A 1st edition, 1896, 536pp with index and Longmans classified catalogue. A fair copy but with cellophane applied to the cover.

£100-150 (+25% BP\*)

139

**INTERNATIONAL CYCLE HISTORY CONFERENCE**

The Proceedings. 11 Annual volumes, with their original DJs where issued, starting in 1990 with Nos, 1 and 2, 4, 5, 6, 7, 8, 9, 11, 20, 29, and a programme for the 25th event held in 2014. All in good, clean condition. (12)

£200-300 (+25% BP\*)

140

**SIMPSON CYCLES**

A 36pp brochure dating c1897, with a list of wins to the credit of the Simpson Chain, together with images of various bicycles, testimonials and good illustrations. In good, clean condition.

£120-180 (+30% BP\*)





149



152



153

**141**

**TWENTY CABINET CARDS**

All housed in museum standard, non-migratory clear plastic holders, mainly pneumatic-tyred machines, bicycles, tricycles and tandem. With several Warwick of Reading promotional cards. All in good or better condition, some foxing, several a little faded. (20)

£350-450 (+30% BP\*)

**142**

**LUCAS LTD - CONFIDENTIAL PRICE LIST**

Five rare Lucas publications dated 1940, 1939, 1938, 1937 and 1936, each between 16 and 24pp, listing their bicycle lamps and accessories, to include dynamo sets, rear lamps, oil and acetylene lamps, bells, and batteries. These were supplied only to the trade, giving trade and retail prices. All in good, clean condition. (5)

£100-150 (+25% BP\*)

**143**

**LUCAS LTD - 1909 CYCLEALITIES CATALOGUE**

Printed in November 1908, 48pp including index. Illustrating and discussing their manufactured output of cycling goods. A little tired, spine split, some paper loss.

£100-200 (+25% BP\*)

**144**

**HALFORD CYCLE CO. LTD**

Two catalogues dated 1911 and 1929, c130pp each. Also, Cycles Hirondele, a c1905 catalogue, 72pp and good illustrations. All in good condition. (3)

£100-120 (+25% BP\*)

**FURTHER PROPERTIES**

**145**

**OPEN-TOP GENERAL OMNIBUS TOYS**

Two similar and modern floor toys, together with another similar. All 42cm long. (3)

£80-100 (+30% BP\*)

**146**

**PLAYER'S PLEASE**

'Favourite Through the Years'. An original colour-printed card advertising wall sign, framed and glazed with sun-shielding glass, excellent colours and fanciful cricketers. The image, 17 x 11-inches.

£80-120 (+30% BP\*)

**147**

**W. R. BROWN LIGHTING**

A rare, early bevel-edged glass and framed sign advertng Motor Lighting - London. William Brown of Brown Brothers established a separate company in Shoreditch, London to market imported motor car lighting from 1899, but had folded by 1902. Hanging from a chain, 8 x 12-inches.

£40-60 (+30% BP\*)

**148**

**A POWELL & HANMER**

combination rear and number plate oil-powered lamp from the veteran period, with a carrying bail, good glasses, oil reservoir and stout mounting bracket. Also, a Lucas Ltd, 420 series oil-powered off-side mounted lamp, with all fittings, but without a tightening screw. Both in serviceable condition, but with some solder and dents showing. (2)

£50-100 (+30% BP\*)

**149**

**A POWELL & HANMER OIL-POWERED REAR LAMP**

A model 535 with two clear side glasses for illuminating the rear of a vehicle, yet showing a red light to oncoming and overtaking traffic. In rarely found unused nickel-plated condition, with all component parts intact, one small glass cracked, otherwise almost perfect.

£200-300 (+30% BP\*)

**THE TONY JAMES COLLECTION**

**150**

**A BROOKS REAR MOUNTED TRUNK**

33-inches wide, 17-inches deep, 16-inches high. With a fold down front, and one case. With external lock and clips.

£200-400 (+30% BP\*)

**151**

**A ROLLS-ROYCE 20/25 RADIATOR**

having apparently been re-commissioned with what looks like a new core by Anglia Radiators, with mounting studs, chromium-plated mechanical louvres and fittings. Total height to the treaded cap 32¾-inches, total width 23-inches, width of the chromium-plated shell, 4½-inches. The radiator numbered E56831. A/F.

£1000-1500 (+30% BP\*)

**152**

**A RUDDSPED ROLLS-ROYCE RADIATOR DECANTER**

A later version of this popular decor item, with its threaded radiator cap, black entwined RR badge. 7¾-inch high. See also lot 314.

£200-400 (+30% BP\*)

**153**

**A ROLLS-ROYCE MASCOT**

chromium-plated on an original pressure cap, a lemon skin patinated socle, no inscription or markings, with a pressure cap. The mascot, 4¾-inches high (not display mounted).

£100-200 (+30% BP\*)

**154**

**A ROLLS-ROYCE MASCOT**

chromium-plated on an original pressure cap, a poorly defined socle, light inscriptions under each wing. With a pressure cap. The mascot, 4¾-inches high (reproduction?).

£100-200 (+30% BP\*)

155

**A ROLLS-ROYCE MASCOT**

chromium-plated mounted on a wood base, a plain socle, no inscription or markings, ideal as a desk display. The mascot, 4¾-inches high. Reproduction.

£100-200 (+30% BP\*)

156

**A ROLLS-ROYCE MASCOT**

nickel-plated unit of 20hp size, and fitted to an original 'large' 2½-inch cap and radiator top, a plain socle, no inscription or markings. The mascot is display-mounted, 4¾-inches high. Reproduction.

£100-200 (+30% BP\*)

157

**TWO 20HP SIZE ROLLS-ROYCE MASCOTS**

A nickel-plated example, with good detail, inscribed around the socle, Rolls-Royce Motor Cars Ltd, 4¼-inches high, display-mounted. Also, a similar sized mascot with a deep socle, indistinct inscriptions (reproduction?), mounted on an original 20hp threaded cap. (2)

£200-300 (+30% BP\*)

158

**A 40-50HP ROLLS-ROYCE MASCOT**

nickel-plated with good detail, RR Ltd Feb 1911 and Charles Sykes inscribed on the socle, Registration and Trade Mark inscription under the wings, Mounted on a 20hp size cap, shorted stud, 5½-inches high.

£400-600 (+30% BP\*)

159

**A 40-50HP ROLLS-ROYCE MASCOT**

chromium-plated (re-plated?) with good detail, RR Ltd Feb 1911 and Charles Sykes inscribed on the socle, Registration and Trade Mark inscription under the wings, Mounted on a 20hp size cap, perhaps a new stud fitted, 5½-inches high.

£400-600 (+30% BP\*)

160

**A 40-50HP ROLLS-ROYCE MASCOT**

nickel-plated with good detail, a raised hollow socle type with RR Ltd Feb 6th 1911 vertically inscribed around the lower section and Charles Sykes inscribed on the upper part, Registration and Trade Mark inscription under the wings, display-mounted, original stud with a split-pin hole, 7-inches high.

£600-900 (+30% BP\*)

161

**ROYAL AUTOMOBILE CLUB FULL MEMBER'S BADGE**

A rare and early second edition badge by Elkington & Co., in the Type 1 format but with a circular instead of a rectangle platform, dating circa 1909 with a nickel-plated finish. The large-spoked road wheel supported by a depiction of Mercury with double-sided single wings, a centrally-mounted rectangular three-colour union flag with good enamels, topped by a King's crown, the profile of Edward VII and RAC wording verso. 17.5 x 96cm. Numbered B648. Not display-mounted.

£600-900 (+30% BP\*)

162

**COMPENDIUM DECANTERS**

Four pairs of moulded and cut glass miniature decanters, suitable for fitting into rear-compartment compendiums. The largest, 7-inches high, stoppers not an exact match on two pairs. (9)

£200-300 (+30% BP\*)

163

**ROYAL AUTOMOBILE CLUB ASSOCIATE'S BADGE**

A brass example with its annual subscription disc aperture and frame, the disc missing, display-mounted. Together with four flower vases and holders. (5)

£80-120 (+30% BP\*)

164

**A SCHNEIDER SEAPLANE SB6 MASCOT**

Mounted on a turned base, Rolls-Royce engraved under the left float in large letters, the smaller version of two sizes originally available, this example is a reproduction.

£100-200 (+30% BP\*)

165

**OLD BILL**

A reproduction Bruce Bairnsfather-designed mascot, this example with good detail and signature on the tin hat but no registration numbers under the scarf, patinated brass finish, now delightfully care-worn. Display-mounted on a circular base. The mascot 12cm high. Also, a nickel-plated Welsh dragon emblem and a wooden stand. (2)

£200-300 (+30% BP\*)



161



165





173

**166 BENTLEY FLYING B MASCOT**

Mounted on a new radiator cap, the underside of the 'B' inscribed with the design registration number 107924, nickel-plated. Together with two modern 'B' mascots. (3)  
 £200-300 (+30% BP\*)

**167 ROLLS-ROYCE RADIATOR CAPS**

Seven examples, two drilled for a mascot, five town caps, together with two pressure cap fittings. (9)  
 £200-300 (+30% BP\*)

**168 ASSORTED MODERN BADGES**

to include post-WWII AA and RAC badges, Veteran Car Club badges, Sunbeam Register, Guild of Veteran motorists, etcetera. All contained in a grey leather-covered box. (Qty)  
 £100-200 (+30% BP\*)

**169 LUCAS ADJUSTABLE SPANNERS**

Housed in a Rolls-Royce wooden spares box, 22 Lucas No 91 and five larger spanners. Various conditions. (27) A/F.  
 £100-200 (+30% BP\*)

**170 A BOX OF PUSH GREASERS**

Housed in a Rolls-Royce wooden spares-box, a quantity of hand-held brass greasers. (Qty)  
 £100-200 (+30% BP\*)

**171 ROLLS-ROYCE CAR CLUB BADGES**

To include examples for the R.R.E.C., and others, with six wooden stands, all modern and in good or better condition. (15)  
 £100-200 (+30% BP\*)

**172 A BREXTON WINE BOX**

A brown leatherette-covered fitted box, with carrying handle, opening to reveal lined apertures and a place for two bottles of wine, and including three wine glasses, two water glasses and two spirit glasses, 13-inches high. In need of a clean, but sound.  
 £100-200 (+30% BP\*)

**173 A HARLEQUIN FOUR-PERSON PICNIC CASE**

A suitcase-style set with a full complement of knives, forks, plates, raffia-covered bottles, thermos-type flask, earthenware jam pots and sandwich boxes, glasses and bottles. The black Rexine outer case in need of a good clean, otherwise sound.  
 £200-300 (+30% BP\*)

**174 A FERODO BRAKE TESTER**

Housed in a fitted wooden box, a floor-mounting version, in what would appear to be working order, Tapley manufactured.  
 £100-200 (+30% BP\*)

**175 AN ENGINEER'S TOOL BOX**

A small black Rexine-covered box with carrying handle, opening to reveal three drawers and assorted tools. 8 x 11 x 5-inches. A/F.  
 £100-200 (+30% BP\*)

**176 AN ENGINEER'S TOOL BOX**

A wooden box with carrying handle and removeable lockable front, opening to reveal five drawers containing assorted tools, mainly callipers. 13 x 8 x 14-inches. A/F.  
 £100-200 (+30% BP\*)

**177 AN ENGINEER'S TOOL BOX**

A wooden box with carrying handle and removeable lockable front, opening to reveal four drawers containing assorted hand tools. 10 x 7 x 15-inches. A/F.  
 £100-200 (+30% BP\*)

**178 AN ENGINEER'S TOOL CASE**

An aluminium case with carrying handle, opening to reveal partitioned areas containing assorted hand tools and testing equipment. 18 x 7 x 13-inches. A/F.  
 £100-200 (+30% BP\*)

**179 A BOX OF ROLLS-ROYCE AND OTHER TOOLS**

To include hub pullers, 'C' and other spanners, E6257, e6257, e52195, U1805, e52165, T1230, E6258, U708, U1805, U708, T1696 and others, all contained in a wooden box. A/F.  
 £200-300 (+30% BP\*)

**180 A ROLLS-ROYCE WHEEL BRACE**

for a Dunlop wheel, numbered 4349/SP226. 5-inches across the flats.  
 £100-200 (+30% BP\*)

**181 A BOX OF ROLLS-ROYCE AND 17 BSA SPANNERS**

in a Rolls-Royce of Crew stores box, to include indistinct Nos: F52298, F52298, F51938, F51935, F51934, F51933, F51984, F51962, F51963, Rolls-Royce magneto spanner, two Austin spanners and other items. (Qty)  
 £100-200 (+30% BP\*)

**182 A LEATHER ROLLS-ROYCE TOOL WRAP**

with spanners Nos: F51964, F51962, F51633, 51961F, 51935F, F51934, 51936F, F2298, F6371, F61015, F61016, FB26463. A/F.  
 £100-200 (+30% BP\*)

**183 SEVEN FORCE-FEED GREASERS**

Of the type as used with Rolls-Royce and other motor cars with threaded nipples. All appear to be in working order. (7)  
 £200-300 (+30% BP\*)

**184 SIXTEEN MANUAL GREASERS**

Most are veteran period with brass cylinders, various sizes and needle ends. (16) A/F.  
 £200-300 (+30% BP\*)



185

**A WATFORD E06 MAGNETO**

A six-cylinder unit with its contact breaker and cover, self-stored, condition of wiring unknown. A/F.

£200-300 (+30% BP\*)

186

**SMALL ROLLS-ROYCE SPANNERS**

A long hinged wooden box with a new and unused set of double-ended box spanners, small double-ended spanners, F51962 types and more. (Qty)

£300-400 (+30% BP\*)

187

**SMALL ROLLS-ROYCE SPANNERS**

A square hinged wooden box with double-ended and single-ended spanners, magneto types and feeler gauges. (Qty)

£300-400 (+30% BP\*)

188

**EIGHT VALVE AND SPRING HOLDERS**

with valves and springs (Rolls-Royce P1/20hp?) a quantity of tyre pressure gauges, seven Lucas auxiliary inspection lamps, contained in a card box. (Qty)

£300-400 (+30% BP\*)

189

**AN ENGINEER'S STETHOSCOPE**

Contained in a fitted box with a hinged lid.

£50-100 (+30% BP\*)

190

**THREE 'BOA CONSTRICTOR' HORNS**

Two examples suitable for a Rolls-Royce 20hp, the other with a chromium-plated flared trumpet. 50-inches long. (3)

£300-400 (+30% BP\*)

191

**A KAYE & SONS OIL DELIVERY BARREL**

A rare garage component called an 'Economiser', having a delivery plunger and drip tray, 11-inches high, 9-inch circumference. Also, three large spill-proof funnels and three Kaye's other hand oilers, a copper foot warmer, four two-gallon tank spouts, and two tinted screen visors. (Qty)

£100-150 (+30% BP\*)

192

**A MULTI-HORN TESTAPHONE**

A Cicca of Paris retailed unit with brass tubular horns, manifold and rubber bulb, in working order.

£150-300 (+30% BP\*)

193

**FOUR BULB HORNS**

Two single-turn brass horns and two straight brass horns, all with rubber bulbs and in sound order, working at the time of cataloguing. (4)

£150-200 (+30% BP\*)

194

**TWO LUCAS BULB HORNS**

Double-turn brass horns, enamelled black with rubber bulbs, both with their (often missing) mounting brackets. (2)

£150-200 (+30% BP\*)

195

**A RARE MOTORING STETHOSCOPE**

Housed in a stained and hinged fitted box with removable tray, the CAPAC Bin-Aural device possesses nickel-plated fittings, sound aids, tubing and ear pieces. Serial number, 8106. The box, 10 x 13 x 3-inches.

£200-300 (+30% BP\*)

196

**TWO ALLBRIT PLANIMETERS**

Both housed in fitted boxes, the devices used to measure irregular shapes, with instructions for use. Both appear complete. (2)

£100-200 (+30% BP\*)

197

**A MINIATURE LATHE**

Of unknown but well-engineered manufacture, this hand-operated lathe has a 9-inch bed, 2-inch throw and fittings. A/F.

£80-120 (+30% BP\*)

198

**FOUR LUCAS CYLINDRICAL BULB HOLDERS**

and two other types, a roll-down visor, a leather belt pouch, two Autovac reservoirs suitable for Rolls-Royce and Bentley and other fittings. (Qty)

£100-200 (+30% BP\*)

199

**KISMET JUNIOR FOOT-PUMP BOX**

A rare wooden box with its Turner & Brothers wording in black, hinged lid and catches. Together with a foot-pump (not Kismet) and a good selection of parallel reamers, most apparently unused. Also, two boxed sets of taps and dies (BA?) (Qty) All A/F.

£200-300 (+30% BP\*)

200

**A ROLLS-ROYCE 20HP INSTRUCTIONS BOOK**

Dated November 1925, fold-out wiring diagrams, red binding with gilt title, penny corners, heavily bruised. Also, a reprinted Catalogue of Parts dated February 1924, 241pp with a maroon binding and a Supplement to Catalogue of Parts, dated January 1928, an RREC reprint. (3)

£150-200 (+25% BP\*)

201

**THREE ROLLS-ROYCE 20HP INSTRUCTION BOOKS**

Originally dated November 1925, fold-out wiring diagrams, red binding with gilt title, penny corners, each a May 1988 reprint, one example in excellent condition, the others used. (3)

£150-200 (+25% BP\*)

202

**A ROLLS-ROYCE 25/30HP HANDBOOK**

Undated, Number XIX, fold-out wiring diagrams, red binding with gilt title, penny corners, a little soiled, but unusually good. 124pp plus supplements.

£100-150 (+25% BP\*)



195



203

**FOUR ROLLS-ROYCE  
20/25hp HANDBOOKS**

All undated, two are Numbered XVI, fold-out wiring diagrams, red binding with gilt title, penny corners, heavily soiled, 120pp plus supplements. Also, two condensed editions, combining all previous editions, 61pp each, a little soiling. (4)

£150-200 (+25% BP\*)

204

**A ROLLS-ROYCE 20/25HP  
HANDBOOK**

Undated, numbered XVI, fold-out wiring diagrams red binding with gilt title, penny corners, heavily soiled, 120pp plus supplements. Also, a French notes for the 20/25hp, dated June 1930, 32pp with fold-diagrams, and with a little soiling. (2)

£50-100 (+25% BP\*)

205

**A CATALOGUE OF PARTS  
40/50HO PII**

Dated May 1931, an early RREC reprint, 170pp, brown Buckram cover, some edge soiling. Also, a reprinted Catalogue of Parts, dated August 1914 for the 1700-2600 Series chassis, 234pp, red Buckram cover with black wording. Good fettle. (2)

£100-150 (+25% BP\*)

206

**ROLLS-ROYCE & BENTLEY  
T. SERIES**

A French Handbook, TSD 2288, no date, brown cover. Rolls-Royce Silver Cloud II, c1960 with a red leatherette wrap-round cover, editorial soiled. Rolls-Royce Silver Cloud II, TSD 754, a 1973 reprint, red leatherette cover. Bentley Continental S2, TSD 783, 2nd edition, black cover and two Rolls-Royce Phantom Coupe model Press Information booklets. (6)

£100-150 (+25% BP\*)

207

**THE EDWARDIAN ROLLS-ROYCE**

by Bryan Goodman and John Fasal. Dissertation on the early 40/50hp cars, 881pp, 1994 in two volumes with a slipcase, 8¼ x 1¾ inches. Volume 1 with a wide linear photograph folded into rear pocket, Volume 2 with a foldout Alpine Trial advertisement. Superb period monochrome and colour illustrations: the most complete book on these motorcars. In good condition, just a little scuffing to the slipcase.

£100-150 (+25% BP\*)

208

**THE ROLLS-ROYCE TWENTY BY  
J. M. FASAL**

A 1979 1st edition, with its original DJ, 560pp including index. Excellent photographs, chassis listing, the images of neglected cars being particularly poignant. Good condition throughout and with a very clean DJ. Also, another copy in poorer condition (2).

£100-150 (+25% BP\*)

209

**HERBERT J. BUTLER - MOTOR  
BODYWORK**

The Design & Construction of Private, Commercial and Passenger Types. A better than usual hardback copy of the First edition, original dark blue cloth with gilt lettering plus gilt panelling to the spine, front and rear hinges re-enforced with cloth (as published), the cover edges a little rubbed, and lower corners slightly worn and with a short split, but internally clean and quite sound. 10½ x 7¾-inches, pp xxiv, 492, plus 245 illustrations and 50 working drawings (many folding). Foreword by Sir Herbert Austin, published by W. R. Howell & Co, 1924.

£150-200 (+25% BP\*)

210

**EVERY CLOUD HAS A SILVER  
LINING**

by David Bassili, a coffee table book with slipcase, limited to 1000 copies (No 246), covering the Rolls-Royce Silver Cloud and the Bentley Series, including coachbuilt and continental versions. 2014, 441pp, in good, clean condition. Also, **The Rolls-Royce Silver Ghost** - the 40/50hp its origins and development 1906-1926, by DW Forward, 2007, 474pp, with a slipcase in very good condition, printed in Australia. (2)

£100-150 (+25% BP\*)

211

**THE GOODLAND PHANTOM  
AND FHE DROPHEAD COUPE**

A pair of books in a slipcase, 201pp & 215, 2004 and 2007, in very good condition, the base of the slipcase with a dent. Also, Rolls-Royce & Bentley by Halwart Schrader, 1990, French text, 301pp, with its slipcase, in very good fettle. (2)

£100-150 (+25% BP\*)

212

**ROLLS-ROYCE & BENTLEY  
EXPERIMENTAL CARS**

by Ian Rimmer, Three-Pointed Star by Scott-Moncrieff, 2nd edition, 20 Silver Ghosts by Phil May and a Cary motor-body fittings catalogue. All in good, readable condition. (4)

£50-100 (+25% BP\*)

213

**DALTON WATSON BOOK COLLECTION**

A significant collection of books from the original Dalton Watson company, many edited and personally published by Lawrence Dalton. The collection consists of a number of rarities, and each book has a DJ, with most being 1st editions in very good condition save for several faded and slightly damaged spines; Bentley by Johnnie Green, signed by the author with a dedication, 1969; Rolls-Royce The Classic Elegance 1987; AC and Cobra by J. McLellan, 1982; The Rolls-Royce PII Continental by R. Gentle, 1980; Pinin Farina by Michael Frostick, 1977; Coachwork on Rolls-Royce 1906-1939, 1975; Duesenberg by Fred Roe, 1982, two copies; The Coachbuilt Packard by Hugo Pfau, 1975; Rolls-Royce The Elegance Continues, 1971; Lancia by Michael Frosrick, 1976; Vanden Plas by Brian Smith, 1979; BMW by Michael Frostick, 1976 & 1978; The Automobile Treasury of Ireland by Finbar Corry, 1979; The Coachwork of Erdmann & Rossi by Rupert Stuhlemmer, 1979; The Classic twin-Cam Engine by G. Borgeson, 1981; Aston Martin & Lagonda by M. Frostick, 1977; The Magic of MG by Mike Allison, 1978 Reprint; Those Elegant Rolls-Royce, 1968 2nd Imp; Alfa Romeo - Milano by M. Frostick, 1976 revised; The Mighty Mercedes by M. Frostick, 1979 reprint; The Jaguar Tradition by M. Frostick, 1979 reprint; The Legendary Hispano Suiza by Johnnie Green, 1977; Private Motor Car Collections of GB by Peter Hugo, 1973; Rolls-Royce in America by John de Campi, 1975; V8 by Michael Frostick, 1979. Also, Rolls-Royce The Derby Phantoms, by L. Dalton 1991 (signed). (28 books)

£800-1000 (+25% BP\*)



## FURTHER AUTOMOBILIA

214

### A SIDED-PAIR OF 'ATLANTIC' OPERA LAMPS

Two Benzine-powered lamps In fair condition, with striped-blue side glasses and clear door glasses in good condition, save for one red rear tell-tale glass missing and some denting. (2)

£150-250 (+30% BP\*)

215

### A ROLLS-ROYCE 40/50HO CARBURETTOR

A rare E1258 type with a good bronze body and fittings, to include a well-made reproduction cast aluminium air vent. Just removed from long term storage. A/F. (2)

£800-1200 (+30% BP\*)

216

### JOSEPH LUCAS LTD. SFT 576 FOG LAMPS

of the type suitable for mounting on post-WWII Rolls-Royce, Bentley and other motor cars. Chromium-plating In need of a clean, but appearing to be useable. (2)

£50-100 (+30% BP\*)

217

### A WORKSHOP DIAL CLOCK

with a fusee eight-day movement, 11-inch dial with PLA initials for the Port of London Authority, behind a brass rim and glass, housed in a wooden case, with pendulum.

£80-120 (+30% BP\*)

218

### A LOCOMOTIVE/TRACTION ENGINE OIL-POWERED LAMP

of imposing measurements, this particularly well-constructed lamp has a side opening door to access the oil reservoir, a sliding aperture to allow wick adjustment, a blanking sheet and holster, carrying bail with a turned wooden grip, and a substantial parallel-sprung mounting-bracket at the rear. With handle, 19-inches high.

£100-150 (+30% BP\*)

219

### A P&H OIL LAMP

being a rare nearside motor car type with carrying bail, sound brass body and good glasses. Also, a Du Cros (Duco) off-side mounted oil lamp, three corporation oil lamps, a hand-lamp with a plano-convex front glass and a Lucas bicycle lamp. (7)

£80-120 (+30% BP\*)

220

### A PAIR OF OPERA LAMPS

A sided-pair of benzene-powered lamps with undamaged glasses, the square cut blue glasses being particularly good, one small dent in a reservoir, otherwise sound. (2)

£120-180 (+30% BP\*)

221

### A PAIR OF OPERA LAMPS

A sided-pair of candle-powered lamps (now converted to electricity) with undamaged bevelled edge glasses, brass construction with signs or original nickel-plating. (2)

£120-180 (+30% BP\*)

222

### TWO SPOT LAMPS

Retailed by Riches of London, two amber glass windscreen mounted electric spot lamps, both with mounting brackets, nickel-plated rims. Together with another example without a bracket. (3)

£100-150 (+30% BP\*)

223

### TWO ROTAX ELECTRIC LAMPS

Two combination number plate and rear lamps, one nickel-plated, the other polished brass, with intact glasses. (2)

£80-120 (+30% BP\*)



220

224

### A BOX OF ASSORTED LIGHTING

to include Eveready hand-lamps, three launch lamps converted to electricity, torpedo lamps, motorcycle acetylene gas lamp, a Richard Johnson Mining lamp and others, all in need of renovation. (Qty)

£100-200 (+30% BP\*)

225

### A PAIR OF LUCAS LAMPS

being 12-volt S.L.R. Long Range Driving Lamps with fluted glasses, one example with its delivery box. (2)

£100-200 (+30% BP\*)

226

### A PAIR OF NOTEX SPOT LAMPS

Both lamps with good glasses, one example appears unused, slightly different mounting brackets, chromium-plated. (2)

£100-200 (+30% BP\*)

227

### A NOTEX CENTRE LAMP

with a small Lucas head-lamp, 9-inch circumference, chromium-plated, reeded glasses. (2)

£80-120 (+30% BP\*)

228

### A PAIR OF LUCAS F141 OIL LAMPS

In sound condition with component parts insitu, brass bodies with black enamel, in need of restoration. (2)

£80-120 (+30% BP\*)

229

### TWO LUCAS OIL LAMPS

both off-side lamps of the No726 series. In restorable condition. (2).

£40-60 (+30% BP\*)

230

### A PAIR OF P&H OIL-POWERED LAMPS

An unused pair but in 'storage' condition, for use with commercial vehicles, having 5-inch wide sockets. 14-inches high with carrying bails, instructions for use, and glasses intact. (2)

£80-120 (+30% BP\*)

231

### A TRAY OF CORE PLUG SPANNERS

An assortment, a number will be for Rolls-Royce motor cars, to include turn keys and single and double-ended box spanners. (Qty)

£200-300 (+30% BP\*)



Images for ALL lots are available at [lawrences.co.uk](http://lawrences.co.uk)

232

**CORE PLUG SPANNERS**

Housed in a lidded wooden box, seven tools in a partitioned box.

£100-200 (+30% BP\*)

233

**THREE DOUBLE-END HUB PULLERS**

Each about 85mm thread circumference, possibly suitable for Rolls-Royce motor cars, but as found. Also, a small single hub puller. Housed in a lidded wooden box.

£100-200 (+30% BP\*)

234

**ROLLS-ROYCE SPANNERS**

A hinged box with mainly Rolls-Royce numbered 'C', and single-ended spanners, numbered examples include: U714, E39, E6257, E75373, E81, U764, D7088. Also, another wooden box of similar spanners and other tools, including Perfect screwdrivers, etcetera. (2-boxes)

£200-300 (+30% BP\*)

235

**MICROMETRES**

Five boxed wide-aperture micrometres. Also, a boxed set of BSP taps and dies. (6)

£50-100 (+30% BP\*)

236

**ROLLS-ROYCE LTD. CREWE**

Nine stores and tool department wooden boxes and three polished wooden hinging boxes with a RR motif in brass. (12)

£100-200 (+30% BP\*)

237

**A TOOL TRAY**

An under-shelf fitted tool tray with spanners, pliers, bulbs, etcetera. Post-WWII Rolls-Royce or Bentley?. Black leatherette-covered with a chromium-plated handle and securing clip. A/F 13½ x 8½-inches.

£100-200 (+30% BP\*)

238

**FITTED TOOL TRAYS**

Three similar rubberised trays with many appropriate tools contained, probably for Rolls-Royce or Bentley? Motor cars. Poorly stored, but will clean. (3) A/F

£150-200 (+30% BP\*)

239

**ROLLS-ROYCE COILS**

one example with a 'Rewound 99' attached, one empty. Also, an Elliot and Jaeger lathe speed indicators and another, each in their boxes, a Lucas centre-dash switch-box, a Rolls-Royce voltage regulator box cover, trembler coil-box, various switches and bulb-holders, travelling inkwells, etcetera. (Qty)

£150-200 (+30% BP\*)

240

**A MICHELIN BOTTLE JACK**

The brass plaque calling it the 'Flirt,' with its correct folding 'T' bar, circular base, 8-inches high.

£80-120 (+30% BP\*)

241

**A 2-TON MICHELIN BOTTLE JACK**

The brass plaque calling it the 'Fast,' with its correct folding 'T' bar, circular base, 8-inches high. Also, three other mechanical jacks, one labelled Rolls-Royce Phantom, in need of restoration and without 'T' bars. (4)

£100-150 (+30% BP\*)

242

**TWO DECORATIVE ROLLER BLINDS**

Although not a pair, both wooden-cased blinds with decorative inlay on rosewood (?) cylinders, with green water-silk pull-down blinds and manual winding returns. One example 24-inches long, the other 22½-inches long. Also, two boxes of assorted motor car parts and accessories, to include: chromium-plated rear view and wing mirrors, grab handles, an original box of light bulbs, Rolls-Royce and Bentley trade gifts, vibration-proof cupboard locks and keys, unused electrical wiring, armoured wiring, a tool roll, 'T' handles, 6 mechanical jack handles, unused leather gaiters, petrol can holders and other small component parts. A/F (Qty)

£200-300 (+30% BP\*)

243

**TWO RIM-WIND CLOCKS**

by Smith Industries, one with a silver dial, the other with a black dial, Arabic numerals, both with an outer segmented rim, hands and lower-positioned hand-control. A/F (2)

£80-120 (+30% BP\*)

**DASHBOARD INSTRUMENTS**

All electrical and mechanical clocks and speedometers are sold as assumed inspected and approved before bidding.

244

**TWO BASE-WIND CLOCKS**

by Smith Industries, each with 3-inch black dials, Arabic numerals, both with an outer minute rim, chromium-plated rims, both with dual-wind and hand-control. A/F (2)

£80-120 (+30% BP\*)

245

**THREE REAR-WIND CLOCKS**

by Smith Industries, each hinge opening, 3-inch silver dials, Arabic numerals, each with an outer minute rim, black hands and winding at the rear. A/F (3)

£80-120 (+30% BP\*)

246

**TWO 'WATFORD' BASE-WIND CLOCKS**

by North & Sons Ltd, both with 3-inch black dials, roman numerals, an outer segmented rim, white hands and rear-positioned hand-control. A/F (2)

£80-120 (+30% BP\*)

247

**A SMITH'S & SON LTD. VETERAN PERIOD CAR CLOCK**

A correctly angled brass for vertical dashboard mounting, a 2½-inch porcelain dial, Arabic numerals, rim-wound with a push button hand-control. Going at the time of cataloguing.

£100-150 (+30% BP\*)

248

**TWO FRONT-WIND CLOCKS**

by Smith Industries, both with 3-inch silver dials, Arabic numerals, both with an outer minute rim, chromium-plated rims, both with dual-wind and hand-control. A/F (2)

£80-120 (+30% BP\*)

249

**TWO AT SPEEDOMETER CAR CLOCKS**

Rear winding with 3-inch black dials, threaded body mounting, Arabic numerals. Also, a similar front-wind clock. A/F (3)

£100-200 (+30% BP\*)

250

**THREE 'WATFORD' FRONT WIND-CLOCKS**

by North & Sons Ltd., two with 3-inch black dials, the other a silver dial, roman numerals, an outer segmented rim, white and black hands. A/F (3)

£80-120 (+30% BP\*)

251

**THREE BASE-WIND CLOCKS**

by Smith Industries, each with 3-inch black dials, Arabic numerals, with an outer minute rim, chromium-plated rims, with dual-wind and hand-control. A/F (3)

£80-120 (+30% BP\*)

252

**TWO REAR-WIND CLOCKS**

by Smith Industries, each hinge opening, 3-inch black dials, Arabic numerals, each with an outer minute rim, white hands and winding at the rear. A/F (2)

£80-120 (+30% BP\*)

253

**THREE 'WATFORD' BASE-WIND CLOCKS**

by North & Sons Ltd, each with 3-inch black dials, roman numerals, an outer segmented rim, white hands, one example fitted to a wooden case for domestic use. A/F (3)

£80-120 (+30% BP\*)

254

**A VETERAN PERIOD DASHBOARD CLOCK**

having a nickel-plated case, rim-wound with a hand-control button on the left. Also, an Air ministry, with a sweeping seconds hand and time of trip manual adjuster. Together with a brass-cased domestic clock with platform escapement, and a Mercer marine clock with a 4½-inch painted dial. (4) A/F.

£100-150 (+30% BP\*)

255

**THREE ROLLS-ROYCE OIL PRESSURE GAUGES**

each with black dials. Also, a Lucas ammeter, a Smith's petrol gauge and other gauges. A/F (Qty)

£100-200 (+30% BP\*)

256

**A BOX OF ROLLS-ROYCE INSTRUCTIONS**

to include two front-adjusting electric clocks (unused?), with 2-inch black dials and R-R motifs, a similar Bentley electric clock with a 'B' motif, four other similar clocks by Kienzle, and other items. (10)

£100-200 (+30% BP\*)

257

**DASHBOARD ANEROID BAROMETER**

by S. Smith & Sons Ltd., having a brass case, black 5cm dial with white numerals and a segmented moveable outer ring. In tested working order.

£100-200 (+30% BP\*)

258

**A BOX OF USEFUL PARTS**

to include a No 40 Lucas oiler, vacuum-powered windscreen wiper motors, a Lucas dimming switch, various dials, RedX dashboard indicator, etcetera. A/F.

£50-100 (+30% BP\*)

259

**A ROLLS-ROYCE WHEEL BRACE**

In need of restoration, but possibly little used, numbered 4340, 5-inches across the flats, 20hp.

£50-100 (+30% BP\*)

**TOYS & MODELS**

260

**SEVEN FRANKLIN MINT MODELS**

to include: 1910 Rolls-Royce 40/50hp, 1907 Rolls-Royce, 1911 Rolls-Royce, 1907 40/50hp, 1905 Rolls-Royce, 1992 Cornish, 1938 PIII, together with a Solido 1961 Silver Cloud and other boxed models. A/F (Qty)

£50-100 (+30% BP\*)

261

**A GENERAL SELECTION**

of plastic models, boxed Airfix Spitfire, 1905 Rolls-Royce 1:32 unmade kit, Rolls-Royce PII 1:24th scale and 1931 Alfa Romeo 8C, radio-controlled Porsche 928, and other toys. A/F (Qty)

£50-100 (+30% BP\*)

262

**MATCHBOX MODELS**

mainly 1:42nd scale, all with their cellophane and card boxes, together with other similar models. Approximately 37 models. A/F

£50-100 (+30% BP\*)

263

**MODEL COLLECTION**

An assortment of plastic boxed models, most 1:42nd scale and larger, various marques and manufacturers. Approximately 34 models. A/F

£50-100 (+30% BP\*)

264

**COMMERCIAL VEHICLES**

A good selection of unboxed metal models, some army vehicles, some half-cab and double-decker buses. Also, two boxed Bentley models, FAB 1, and others. Approximately 42 models. A/F

£50-100 (+30% BP\*)



247



257



267

265

**A 1929 ROLLS-ROYCE P1**

by Franklin Mint 1:16th scale model, depicting a Cabriolet, displayed in a mirror-backed case, with a brass name plate. A/F

£50-100 (+30% BP\*)

266

**A MODEL ASSORTMENT**

Mainly 1:42nd scale, various conditions and manufacturers. Approximately 60 models. A/F

£50-100 (+30% BP\*)

267

**A 1905 ROLLS-ROYCE**

by Franklin Mint 1:16th scale model, depicting a four-seat tourer, displayed in a mirror-backed case, with a brass name plate. A/F

£50-100 (+30% BP\*)

268

**A 1930 BUGATTI ROYALE**

by Franklin Mint, 1:16th scale model depicting the Coupé Napoleon, displayed in a plastic/glazed case (cracked top), with a brass name plate. The enamel finish is bubbling. A/F

£50-100 (+30% BP\*)

269

**A ROLLS-ROYCE SILVER SERAPH**

by Franklin Mint, 1:24th scale model, depicting a four-door saloon, displayed in plastic/glazed case, with a brass name plate. A/F

£50-100 (+30% BP\*)

270

**A 1925 ROLLS-ROYCE 40/50HP**

by Franklin Mint, 1:25th scale model, depicting a four-seat tourer, displayed in plastic/glazed case, with a brass name plate. A/F

£50-100 (+30% BP\*)





283

271

**MAMOD STEAM WAGON**

with its fittings; also, a Mamod steam car, both with distressed boxes, together with an unboxed Mamod open wagon. A/F (3)

£50-100 (+30% BP\*)

272

**TWO STUART TURNER LTD MODELS**

A vertical engine, missing its flywheel, together with a seemingly scratch-built vertical steam engine and a possibly unused Stuart Turner horizontal Babcock type boiler, missing its burner tray and chimney. (3)

£50-100 (+30% BP\*)

273

**STEPHENSON'S ROCKET**

A Hornby Railways 3½-inch gauge model, unused and still contained in its original delivery box, with instructions and track, together a box of a further 25 feet of track (a total of 50 feet). The boxes a little soiled. (2)

£100-200 (+30% BP\*)

274

**HORNBY '00' GAUGE RAILWAY**

A box of 26 boxed components, track, carriages, buildings, platform parts, Diesel 4008 TC B-B, and Merit accessories. (Qty)

£50-100 (+30% BP\*)

275

**HORNBY '0' GAUGE**

A clockwork GWR Tank Engine, A 20-volt Royal Scott, two LMS tenders, each in red modern boxes. Also, an early period mechanical Duke of York with tender and a 2-inch GWR clockwork Tank Engine with removed motor, together with a similar dismantled locomotive in a wooden box. All in need of refurbishment. (6)

£50-100 (+30% BP\*)

276

**A TRAY OF ASSORTED MODELS**

About 65 loose model classic and vintage cars and other vehicles, various scales, mostly metal but several plastic, a few a bit worn but mostly good/very good condition. Makes include Corgi, Dinky, Lesney, Matchbox, Meccano, etc. Together with another box containing a quantity of empty model car boxes (Qty)

£40-80 (+30% BP\*)

**FURTHER MASCOTS & BADGES**

277

**THE TRUSTY SERVANT MASCOT**

A Lightcar mascot by Augustine & Emile Lejeune, with remains of its original nickel-plating, currently standing on a display base. 9cm high.

£120-140 (+30% BP\*)



284

278

**THE TRAMP**

Two mascots, a 1920s-period petit depiction, ideal for a Lightcar, offered by Augustine & Emile Lejeune and fitted to a small radiator cap. Also, a two-dimensional aluminium mascot of the motion picture character, stamped verso 1927. (2)

£400-600 (+30% BP\*)

279

**RUNNING SPEED NYMPH**

by Augustine & Emile Lejeune a mid-1920s design, display-mounted. 15cm high.

£200-300 (+30% BP\*)

280

**A CYMBAL-BANGING MONKEY 'JOLLY CHIMP'**

in fair condition, 15cm high, together with a key-wound walking bear toy (2).

£40-80 (+30% BP\*)

281

**BOXED MOTORING GAMES**

Various periods and conditions, being Spot a Lot, Touring England, Jeu du Permis de Conduire, Car-Capers, Go-Karting, A Motor Tour, Touring England with a collapsed box, Wheeling without a box and other items. To be viewed in person to establish completeness. A/F

£80-120 (+30% BP\*)

282

**MG GILT CAR BADGES**

A pair of MG Vintage Register motor car badges numbered 4 and 7, being two of fifty badges manufactured in 2010 but not issued due to the abandonment of vintage MG registration. Both unused and housed in their delivery boxes.

£100-200 (+30% BP\*)

283

**B.R.D.C. MEMBERS BADGE**

Manufactured by Collins, numbered 336, c1950 and inscribed G. H. Mackie. Good enamels and chromium-plating, with a little soiling and surface scratching, and in need of a careful clean. Display mounted.

£500-800 (+30% BP\*)

284

**B.A.R.C. MEMBERS BADGE**

Manufactured by Spencer of London, numbered 449, good original enamels and chromium-plating, stud mounting in good order.

£500-800 (+30% BP\*)

285

**JUNIOR CAR CLUB BADGE**

Manufactured by Elkington & Co., numbered J3025, good enamels apart from a small chip to the lower white, original chromium-plating, stud mounting without a securing nut.

£100-150 (+30% BP\*)

286

**MG - SIX BADGE**

A cast aluminium badge in a stylised 6 and MG initials design, originally purposed for the new six-cylinder 18/80 series in 1929. This example, believed to be an original badge, was removed from the rear of a decaying 1929 MG saloon in north Devon in 2006.

£200-300 (+30% BP\*)

287

### AUTOMOBILE ASSOCIATION COMMERCIAL BADGE

A grill mounted badge numbered V252386, good chromium-plating, detailed basket weave behind a stylised AA.

£50-100 (+30% BP\*)

288

### THE BRIGHTON & HOVE MOTOR CLUB

A rare oval designed members badge with the town badges in multi-coloured enamels, against chromium-plating, together with a membership disc dated 1933 verso. In delightful condition with an integral badge bar mounting.

£200-300 (+30% BP\*)

289

### ROAD FELLOWSHIP CLUB

A petit and rare badge for a short lived association in the 1930s, with the Latin motto 'Non Nobis Solum' (not for ourselves alone) against a black enamel bezel. Some light chipping and hints of the original chromium-plated finish.

£180-220 (+30% BP\*)

290

### SUISSE AUTOMOBILE CLUB

A rare and interesting 1930s badge of the club founded in 1898, enamelled typographical weave of the letter ACS with a Swiss cross background within a gear wheel. 9 x 12cm.

£200-300 (+30% BP\*)

291

### AUTOMOBILE ASSOCIATION MEMBERS BADGE

A 'Stenson Cooke' badge numbered 17749 and dating from 1909, with the correct telephone (4128) and telegraphic address stamped verso.

£140-180 (+30% BP\*)

292

### ROYAL AUTOMOBILE CLUB

A c1937 badge with its correct diamond shaped enamel RAC centre, although the last of the Mazac structures, this badge is in very good chromium-plated condition, retaining its badge bar mounting bracket, numbered f151144.

£100-140 (+30% BP\*)

293

### ROYAL AUTOMOBILE CLUB ASSOCIATE BADGE

A good nickel-plated on brass example dating circa 1920, this example having a 1926 membership disc, numbered N46632, radiator cap mounting, a small enamel chip. 9cm circumference.

£140-180 (+30% BP\*)

294

### AUTOMOBILE ASSOCIATION MOTORCYCLE BADGE

A rare, pierced AA badge of the size used with motorcycles, numbered 142696, a pre-'cycle' inscribed badge c1914 with a rare after-market AA issued yellow backing plate. 11cm high.

£120-160 (+30% BP\*)

295

### B.A.R.C. MEMBERS CAR BADGE

A modern five-colour enamel badge, in excellent unused, ready to mount condition.

£50-100 (+30% BP\*)

296

### CALORMETER

A vintage temperature gauge, a large 7cm diameter version, in sound condition and tested working.

£40-80 (+30% BP\*)

297

### THE ORDER OF THE ROAD

A red enamel badge promoting courtesy on the road, founded in 1928, this badge dating from the 1950s, very good enamels and chromium-plating. 10.5cm high.

£50-100 (+30% BP\*)

298

### A KINGFISHER MASCOT

A 1920s cold painted Vienna bronze mascot, mounted on a circular nickel-plated dais, original colours, 7cm total height, not display mounted.

£100-150 (+30% BP\*)

299

### ANNA PAVLOVA 1881-1931

A rare well-crafted mascot depicting the Prima ballerina, offered and inscribed by the Augustine & Emile Lejeune company, a petit mascot in a delightfully patinated bronze. Display mounted, 11cm high.

£200-300 (+30% BP\*)

300

### AN RAC FULL MEMBER'S BADGE

dating pre-1952 with a South Africa enamel badge, also a Gaunt Merchant Navy, BP Automobile Club, Motor Caravanners Club, an NSU plaque, and others. (Qty)

£100-150 (+30% BP\*)

301

### A DUNLOP GOLF 31 PROMOTIONAL MASCOT

Good detail with a nice patina, 3½-inches high, display-mounted.

£70-90 (+30% BP\*)

302

### AN EGYPTIAN GODDESS MASCOT

Retailed and inscribed by Desmo, but manufactured by Augustine & Emile Lejeune, a crouching figure with wings, chromium-plated, display-mounted. 6-inches high.

£80-120 (+30% BP\*)

303

### FOUR JOCKEY & HORSE MASCOTS

to include three Louis Lejeune 1950s: Standing Horse and a Jockey and Rider, both chromium-plated, and another with remains of its plating. Also, a chromium-plated hollow cast mascot. (4)

£80-120 (+30% BP\*)

304

### SPEED WHEEL MASCOT

A solid cast mascot with good detail, but the wheel centre wings are missing, chromium-plated, mounted on a radiator cap, 6½-inches high.

£40-60 (+30% BP\*)

305

### RENÉ LALIQUE VICTOIRE GLASS MASCOT

A modern re-issue of the 1928 design-registered original, issued as a 10-year celebration of the end of the Great War in 1918. The mascot was also titled the 'Spirit of the Wind'. An art deco design with a frosted finish, in very good condition, no inscription.

£400-600 (+30% BP\*)



305





314

**306**

**A FLYING STORK MASCOT**

in the guise of a Hispano-Suiza mascot, chromium-plated and mounted on a turned base, the mascot support having an aperture for a temperature gauge, no inscription. 7½-inches high.

£80-120 (+30% BP\*)

**307**

**A BENTLEY FLYING 'B' MASCOT**

a modern emblem and three other mascots: two Eagles, one example with good feathering detail, and a horse head and horse-shoe mascot, chromium-plated. (4)

£60-80 (+30% BP\*)

**308**

**A 1909 AA CLUB BADGE**

numbered 12321, unusually stamped both at the base and top indicating the 1909 transition, with 'Stenson Cooke - Secretary' and telephone and telegraphic details inscribed. Much of the original nickel-plating remains, the base has been reduced in size, and the mounting holes redrilled. Together with a similar but 1995-issued reproduction, celebrating the 100th anniversary of the Automobile Association. Both display-mounted. (2)

£80-120 (+30% BP\*)

**309**

**TWO RAC ASSOCIATES' BADGES**

with central circular union flags, both repaired. (2)

£70-90 (+30% BP\*)

**310**

**AN RAC CLUB ASSOCIATES BADGE**

numbered B21222, retaining its membership disc and frame, mounted on an onyx base.

£40-80 (+30% BP\*)

**311**

**TWO RAC BADGES**

A chromium-plated Full Member's badge with a badge bar mounting and rectangle union flag, together with an Associates badge with a 1933 membership disc and frame, the latter with repaired union flag enamels. (2)

£60-80 (+30% BP\*)

**312**

**SIX POST-WWII CLUB BADGES**

to include an RAF Reserves car club badge, a Rolls-Royce Memorial Foundation, Rotary International and AA badges. (6)

£40-80 (+30% BP\*)

**313**

**SEVEN CAR CLUB BADGES**

to include two British & Sports Car club badges one with over-painted enamels, The Rolls-Royce Memorial Foundation, AA, and a good RAC Associate's Badge. A/F (7)

£80-120 (+30% BP\*)

**314**

**A RUDDSPED BENTLEY RADIATOR DECANTER**

A rare red label version of this popular decor item, with its threaded radiator cap, Bentley badge. 7¾-inch high.

£400-600 (+30% BP\*)

**315**

**A JAGUAR DECANTER**

with a combination screw cap and cup, with a mounted Jaguar, chromium-plated grille. 7-inches high.

£40-60 (+30% BP\*)

**316**

**MOTOR RACING SCRAPBOOKS**

Each with plastic spiral bindings in generally fair condition, Motor Racing 1946 (No 6), slight scuffing to the cover, front cover partly separated. Motor Racing 1947 (No 11) soiling to the cover, lower cover partly split at the spine, both by J. Eason Gibson and Motor Racing 1948-1949 (No 12) small stain on the front cover and light foxing, 1st edition 1951. (3)

£50-100 (+25% BP\*)

**MOTORING LITERATURE**

**317**

**THE WHITE STEAM CAR**

A landscape-style brochure for 1909-1910, with a white card cover with a double fold and gilt titles, opening to reveal 28pp of text and well-defined images, a vertical fold to the centre. Also, a rare Aztec 7, 4pp brochure and a 2pp example, a 1930 Daimler 20/30hp Instruction Book together with a Spare Parts catalogue with excellent monochrome illustrations, a c.1949 Lea Francis 18hp brochure for the 2½-litre, 4pp with a horizontal fold, specifications and component illustrations and a Mercedes-Benz 230SL of circa 1964, printed tissue inserts, English text and retaining its specifications sheet in the rear pocket, cover slightly soiled and sellotaped spine, together with a similar arranged 1967 Ford Thunderbird brochure in delightful condition. A good lot. (9)

£200-300 (+25% BP\*)





324

318

**BRITISH RACING CARS**

Compiled by the late Cyril Posthumus, 14pp including an illustrated card cover, c1947. A promotional landscape format brochure illustrating and discussing various marques, to include Napier, Vauxhall, Lea-Francis, E.R.A., Riley, etcetera. The F. Gordon Crosby illustrated cover scuffed and soiled. Also, a similar The Story of GP Racing, but portrait-style booklet of 28pp by Charles Fothergill using Klemantaski photographs. A little creased. (2)

£50-100 (+25% BP\*)

319

**1911 CHEMICO ILLUSTRATED BROCHURE**

16pp and cover (page 1 & 2 missing), well-defined images and better than usual text. Also, J. Grose Ltd., 1911, 32pp brochure, promoting both motor car and motorcycle accessories. Both catalogues in good, clean condition. (2)

£50-100 (+25% BP\*)

320

**SHELL PROMOTIONAL BROCHURES**

Issued between 1934 and 1936, the set of four includes the rare 'The Modern Commercial Vehicle', the saddle-stitched spine a little worn and scuffed, 'The Modern Motor Car' in very good condition, 'The Modern Aeroplane', in good, clean fettle and the 'The Modern Motor Cycle', in good condition, with sectioned cut-aways and excellent colour images, all edited by Maurice Beck. (4)

£80-120 (+25% BP\*)

321

**DUNELT MOTORCYCLE PROMOTIONAL HANDBILL**

A well-illustrated double-sided handbill for the 1933 V1 Special and the V2 Special, with specifications, prices and graphs. Sound condition, save for discolouring and feathering on the top edge. Also, a 1930s Noxal Sidecars 18pp brochure illustrating and detailing various sidecars priced between £28 and £10. In good condition. (2)

£50-100 (+25% BP\*)

322

**A GOOD COLLECTION OF BOOKS**

to include the Complete Encyclopaedia of the Motorcar with a good DJ, the 1984 edition, Motor Year Books for 1950 and 1955 with good DJs, Annual automobile Review 1956, Rolls-Royce, Daimler & Lanchester, The Book of Sports Cars, Morris, and other titles. (20)

£100-200 (+25% BP\*)

323

**SPEED - THE OFFICIAL ORGAN OF THE B.R.D.C**

A set of four volumes covering the period Vol 1 No 1 (June 1935) to Vol 4 No 46 (April 1939) a full set bound in green buckram and cloth with gilt titles to the spine, bound with covers and, importantly, retaining the rarely found Moser Supplements, now held in the rear pocket of volume 4. Excellent condition. (4)

£200-400 (+25% BP\*)

324

**THE GRAHAM ROBSON PHOTOGRAPHIC ARCHIVE**

A significant collection of monochrome and 35mm (and larger) colour transparencies of domestic and competition motor cars, once held in three, four-drawer filing cabinets. Separated into hanging pockets, each pocket named with the various marques, Triumph, TVR, Rolls-Royce, Mini, Jaguar, Porsche, Audi, Mercedes-Benz, Lanchester, Alvis and many others, with a significant grouping of Ford vehicles, particularly in racing and competition guise. Other images include pit activity, tracking views, personnel, publicity images, etcetera. An informal counting process indicates that there are between 6000 and 9000 images, most circa 6 x 8-inches in size, some larger, and most appear to be highly useable. Many of the photographs appear to be in the public domain, many images by Graham Robson himself, with his named label verso, and their sale includes copyright, some possibly with royalty issues. Intending purchasers should therefore satisfy themselves as the condition and validity of world-wide reproduction. Please see a selection illustrated on the company website, [www.lawrences.co.uk](http://www.lawrences.co.uk). Sold A/F (Qty).

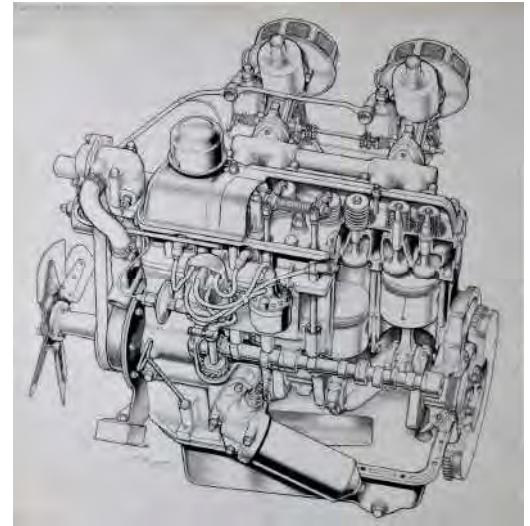
£4000-6000 (+30% BP\*)



Images for ALL lots are available at [lawrences.co.uk](http://lawrences.co.uk)



329



331

325

**A BOOK SELECTION**

from the estate of the late Graham Robson, to include Maserati by Orsini and Zagari with its slipcase; BRM, a three volume set by Doug Nye; Silver Arrows by Chris Nixon, The Grand Prix Car by Pomeroy, two volumes, Bugatti by Jonathan Wood, and other good titles. (19)

£50-100 (+25% BP\*)

326

**THE 1962 TRIUMPH TR4 RALLY CAR**

A quality and well-detailed model of 5 VC, mounted on a plinth and given to Graham Robson 'in recognition of 25-years as Honorary President of the TR Register, November 2019'. The base 12 x 6-inches.

£80-120 (+30% BP\*)

327

**THE AUTOCAR - LOOSE COPIES**

dating between 1919 and 1939, a significant run of mainly loose magazines (some early copies bound without covers), otherwise mostly with covers and spines, albeit a number are soiled, and damaged. There appears to be a little over 700 issues of a twenty year run of 1040, but intending bidders are advised to satisfy themselves as the condition and quantity of the magazines being offered. Sold A/F. (Qty)

£400-800 (+25% BP\*)

328

**VIC BERRIS - 1970 TRIUMPH STAG**

A highly detailed and original cutaway drawing with light green wash and some white highlighting. At one time part of the Autocar Archive, which was sold by auction in 2001. Framed, mounted and glazed. The image 12 x 25-inches.

£100-200 (+30% BP\*)

329

**JOHN HOSTLER - 1976 TRIUMPH TR7**

A highly detailed and original cutaway drawing with yellow wash and some white highlighting. At one time part of the Autocar Archive, which was sold by auction in 2001. Framed, mounted and glazed, The image 14 x 22-inches. Also, an oil painting of the TR4 which competed in the Alpine, Tulip, Spa-Sofia-Liege and RAC Rallies, driven by John Sprinzel in 1962 and by Vic Elford in 1963. Framed, 17 x 23-inches. (2)

£100-200 (+30% BP\*)

330

**STEVE COLLINS - TRIUMPH SPITFIRE**

An original technical cutaway of the motor car, with some white highlighting, as illustrated in The Motor, and as sold by auction in 2001, framed, mounted and glazed, the image 17 x 25-inches.

£100-200 (+30% BP\*)

331

**JOHN FERGUSON - TRIUMPH TR2 ENGINE**

An original technical cutaway of the 1955 four-cylinder engine, manuscript wording top and base. Formerly sold as part of the Haymarket clearance auction in 2001, a little edge browning and creasing, framed, mounted and glazed, the image 19 x 19-inches.

£100-200 (+30% BP\*)

332

**CUTAWAYS**

A Selection of unframed original and copy technical cutaways or drawings of component parts of motor cars to include breather pipes, windscreen supports, fuel tanks, TVR profile, TR2 body parts, and more. Various small sizes and shapes. (20)

£40-80 (+30% BP\*)

333

**JOHN FISHER - TRIUMPH GT6**

An original technical cutaway on card of the 1966 model, with shading wash and white high lightening, a little edge browning. Unframed, 16 x 21-inches. Also, John A. Marsden - Triumph saloon, a technical cutaway some shading wash, with an Autocar logo attached, 18 x 25-inches. Both formerly sold as part of the Haymarket clearance auction in 2001. (2)

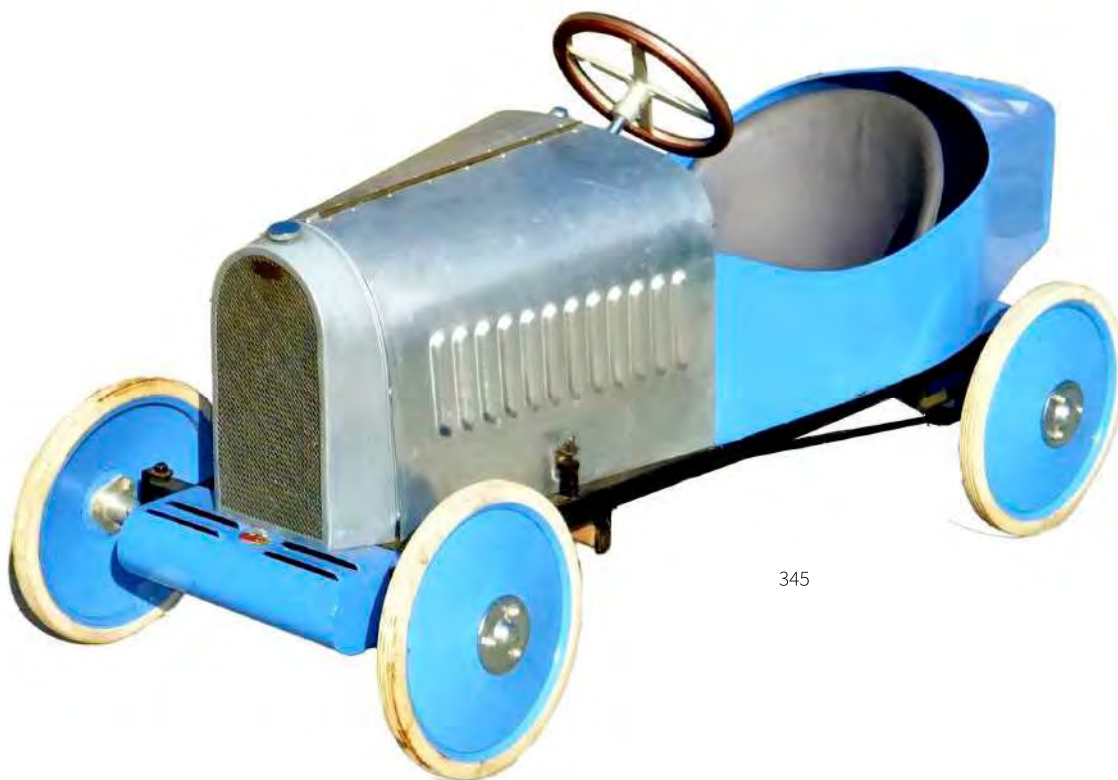
£100-200 (+30% BP\*)

334

**A SELECTION OF TECHNICAL DRAWINGS**

to include copies of drive chain cutaways, seating arrangements and measurements, dashboard layouts and others. All in fair or better condition, all unframed and many between A4 and A3 size. (24)

£40-80 (+30% BP\*)



345

335

**LAWRENCE WATTS - TRIUMPH 2600**

An original technical cutaway of the six-cylinder engine, 1977, drawn on card for The Motor, unframed, 19 x 27-inches. Also, Vic Berris, an original technical cutaway on card of an automatic gearbox, undated, unframed, 19 x 27-inches, and an original technical cutaway on card of the 1969 Fiat 123 engine, unframed, 16 x 19-inches. All with a little scuffing to the edges. (3)

£100-200 (+30% BP\*)

336

**AUTHOR SIGNED BOOKS**

Transport Pioneers of the 20th Century signed by Sir Peter Allen; History of the 1961-1965 Motoring News Rally by Peter Robinson; Pedals and Pistons by Peter Procter; Jackie Stewart autobiography; Driven by Rosemary Smith; Wolseley by Anders Clausager; Hart Power, a limited edition of 75, this example numbered 55, signed by Brian Hart. All in good or better condition. (7)

£100-200 (+25% BP\*)

337

**GRAHAM ROBSON - AWARDS**

The 1997 Moto Awards, being a Boyce Moto Meter with wings, three silver-plated trays, an RAC Rally of GB lapel badge with year bars dating between 1959 and 1975, and three examples of the Silver Owl Trophy, each display-mounted. (8)

£80-100 (+30% BP\*)

338

**AN AUTOMOBILE ASSOCIATION BADGE**

A large brass badge numbered 132206, 16.5cm.

£50-100 (+30% BP\*)

339

**AN EARLY AUTOMOBILE ASSOCIATION BADGE**

A 'Stenson Cooke - Secretary' badge numbered 1059, in oxidised condition.

£100-120 (+30% BP\*)

340

**AN RAC - ASSOCIATE'S BADGE**

having a Royal Scottish Automobile Club enamel centre, King's crown, chromium-plated brass, numbered CC161. Display-mounted.

£100-120 (+30% BP\*)

341

**AN RAC ASSOCIATE'S BADGE**

fitted with a badge bar mounting, Mazak metal and a circular union badge.

£80-120 (+30% BP\*)

342

**A MOTO-METER**

of the type used with Morris motor cars, fitted to a Morris cap, display-mounted.

£80-120 (+30% BP\*)

343

**A CUPID MASCOT**

nickel-silver on brass, good detail and display-mounted.

£120-140 (+30% BP\*)

344

**AN EAGLE MASCOT**

appearing to have just landed on rocks, with excellent features and rock detail, display-mounted.

£150-200 (+30% BP\*)

345

**A CHILD'S PEDAL CAR**

Manufactured to a very high standard in the guise of a racing Bugatti. The features include an adjustable seat and feet cranks, hand bracket to the rear wheel, wooden steering wheel, opening bonnet, white solid rubber tyreing, brightwork and faux-walnut dashboard. Just removed from long term storage, the motor car is in very good condition. 51-inches long, 20-inches wide.

£1200-1400 (+30% BP\*)





358

## FURTHER CYCLING

346

### BICYCLE LAMP SPARES

Two boxes of assorted mainly acetylene gas lamp spares and components, reflectors, burners, rear brackets etcetera. (2)

£40-80 (+30% BP\*)

347

### EIGHT OIL-POWERED BICYCLE LAMPS

to include a rare Lucas Black Prince, front and rear lamps. (8)

£80-120 (+30% BP\*)

348

### EIGHT OIL-POWERED BICYCLE LAMPS

to include a rare Lucas Black Prince, front and rear lamps. (8)

£80-120 (+30% BP\*)

349

### SEVEN ACETYLENE GAS LAMPS

an assortment manufactured by Lucas, P&H and miller, together with an oil-powered Lucas captain lamp. (8)

£80-120 (+30% BP\*)

350

### BOTTLES OF BURNING OIL

a Carbide of Calcium tin, and other transfer printed tins. A box.

£40-80 (+30% BP\*)

351

### BICYCLING MAPS

and other ephemera to include cycling playing cards, advertising pencils, expandible cup etcetera. A Box.

£40-80 (+30% BP\*)

352

### PUNCTURE REPAIR KIT TINS

A good collection to include other transfer printed tins, together with three saddles.

£40-80 (+30% BP\*)

353

### A CIRVIT BICYCLE REPAIR STAND

having been little used, with its delivery box.

£30-60 (+30% BP\*)

354

### BICYCLING MEDALS

A Folder containing an assortment, some dating from the 1950s, a number of C.T.C. issues, some promotional badges and a good collection of bicycle county badges.

£100-150 (+30% BP\*)

355

### THREE ALBUMS OF PROMOTIONAL CARDS

most reproduction. (3)

£40-80 (+30% BP\*)

356

### CYCLING SUBJECT POSTCARDS

About 250 original postcards in one album, humorous, social, cycling battalions, children and advertising subjects. Many with cancelled stamps and monographs. All in good or better condition.

£100-150 (+30% BP\*)

357

### PLAYERS CIGARETTE CARDS

An original set dating c1939, double framed and mounted to enable access to the text verso.

£40-80 (+30% BP\*)



359

358

**A BATES LIGHTWEIGHT BICYCLE**

Finished in blue enamel, the 21-inch frame with Westcliff on Sea badging, Campagnolo fittings to include, headstock, brakes, pedals and cranks. Brooks B17 type leather saddle, Gipiemme twelve-speed Deraillieur, lightweight mudguards and Diadrant front forks.

£300-400 (+30% BP\*)

359

**A RUDGE-WHITWORTH LADY'S BICYCLE**

having a 21-inch black loop frame with 28-inch wheels, rear rack, correct two-speed rear hub, roller brake leavers on a nickel-plated 17-inch handlebars, figured leather saddle, front and rear oil lamps and one piece cranks, 1920s.

£100-200 (+30% BP\*)

360

**A SELBACH GENTLEMAN'S SPORTS BICYCLE**

A mid 1920s 23-inch machine with track and road gearing, Bluemel black mudguards, flat nickel-plated 16-inch handlebars, bell, centre-pull calliper brake and a Lucas Calcia Club acetylene gas lamp to the front and a Lucas rear lamp.

£300-400 (+30% BP\*)



360



Images for ALL lots are available at [lawrences.co.uk](http://lawrences.co.uk)