



Ceramics, Oriental & Works of Art

THURSDAY 14TH OCTOBER

Condition Reports for Ceramics

Under no circumstances will we confirm that a lot is in perfect condition.

Condition reports will not be given on items estimated at less than £500 and will only be given on items above £500 at our discretion.

The onus rests with the buyer to satisfy themselves as to the condition of lots on which they wish to bid.

Condition reports will be in writing only and will be generated only by the ceramics department.

Condition reports will not be given after the closure of business of the day before the sale.



Simon Jones

19th/20th Century Design Specialist

simon.jones@lawrences.co.uk



1610
HARRACH BOHEMIAN
GLASS VASE

an unusual ruby coloured glass vase, overlaid with flowers and foliage in relief and with vaseline glass handles, propeller mark to base, 11cm high. Also with a bohemian green and white overlaid glass vase (20cm high), and a cranberry glass scent bottle with silver stopper. (3)
£60-100



1611
PAIR OF BRASS &
CRANBERRY GLASS OIL
LAMPS

with a brass column and base in the Art Nouveau style, supporting a cranberry font and shade. 69cm high.

£150-250



1612
VICTORIAN GLASS
DECANTERS & WINE
LABELS

a set of three amber coloured glass decanters, with metal mounts designed with leaves and berries and each with a stopper. Each with silver-plated leaf-shaped wine labels, Claret, Hock and Sauterne. Bottles 33.5cm high. (3)

£100-150

1614
PAIR OF 19THC LIDDED
GLASS JARS

a pair of mid 19thc lidded glass jars with a blue tinge, with a bell shaped dome top lid, tapering body and square pedestal foot. With various star cut and faceted decoration, and with a star cut base. 35cm high. (2)

£100-150

1615
ANTIQUE DECEPTION
GLASSES

mostly 19thc and including a thick walled deception wine glass with conical bowl and knopped stem (12cm high), a similar glass of slightly smaller proportions (11cm high), and ten other various glasses. (12)

£100-150

1613

ANTIQUE DECEPTION
GLASSES

mostly 19thc and including a thick walled deception wine glass with conical bowl and knopped stem (12cm high), a similar glass of slightly smaller proportions (11cm high), and ten other various glasses. (12)

£100-150



1615
ANTIQUE GLASS PEDESTAL
BOWL

possibly Waterford and late 18thc/early 19thc, the oval shaped bowl with turn over rim and diamond cut design. With further cut decoration to the side and mounted on a pedestal base. 23cm high, 32cm across

£150-250



1616
SET OF SIX 19THC GLASS
RUMMERS

the rummers with a pan top bowl, etched with grapes and vine leaves, with a short stem and wide foot. 12cm high, bowl 10cm diameter. (6)

£60-100



1617
LARGE SUITE OF TABLE
GLASS - WATERFORD

a large suite of table glass in the Sheil design, including 12 long stem wine glasses (19cm high), 11 wine glasses (16.5cm high), 10 smaller wine glasses (16cm high), 8 small glasses (14cm high), 8 small bowls, 24 whisky tumblers (9cm high), 6 port glasses, 8 small glasses (9.5cm high), and 3 champagne flutes. Some damages in places.

£300-500



1618
BOHEMIAN GLASS

including a pair of ruby flash octagonal tapering vases, each etched with Deer in a landscape (damages in places, 26cm high), a ruby flash goblet also etched with Deer (damage to foot, 20.5cm high), two lidded jars and a decanter. (6)

£100-150



1619
JAMES POWELL & SONS -
VASELINE GLASS

a vaseline glass vase with 'thrown' wavy rim and twisted stem, also with two glasses with the same design. Goblet 21cm high, pair of glasses 14cm high. (3)

*For a similar designed vase see Whitefriars Glass The Art of James Powell & Sons, page 25.

£100-150



1620
SET OF CONTINENTAL
LIQUEUR GLASSES

probably late 18thc/early 19thc, a set of eleven glasses with octagonal shaped bowls with gilt star motifs, with a diamond shaped faceted stem. 11cm high. (11)

£100-150



1621
CAMEO GLASS JAR & SILVER PLATED LID
 in the style of Webb, of globular form and with a white body overlaid with green flowers and leaves. With an ornate silver plated lid and swing handle. Unmarked, 12cm high
 £60-100



1630
PAIR OF MEISSEN CANDLEABRA
 a pair of late 19thc figural twin branch candelabra, one modelled with figures gathering eggs and the other with a lady and a child climbing a tree. Meissen crossed sword marks and impressed numbers, 1160 and 1153, 23cm and 22.5cm high. Also with a Meissen blue and white sweetmeat dish with a central figure, 13cm high. (3)
 £100-150



1631
DRESDEN BREAKFAST SET
 decorated in the Meissen style, comprising a circular lobed tray (28cm dia), teapot (11cm high), lidded sugar bowl and milk jug, and tea cup and saucer. With lobed panels painted with various figures and buildings by the waters edge and various boats, and painted with sprigs of flowers and gilded decoration. Marked with a Blue 'D' and Crown mark. (6)
 £100-150



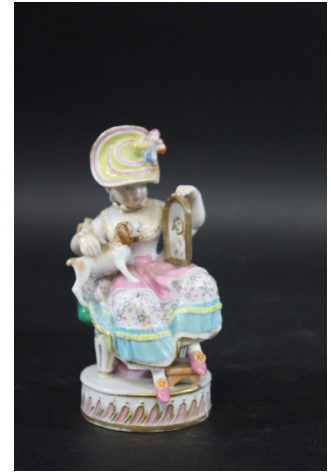
1632
PAIR OF CONTINENTAL PORCELAIN TULIP VASES
 probably French, the vases with tulips and leaves and gilded decoration to the top section, the bottom section modelled with various leaves and with oval bases. Unmarked, 23.5cm high. (2)
 £60-100



1633
19THC FLORAL ENCRUSTED TWO HANDLED VASE
 probably by Coalbrookdale, one side painted with figures within a landscape, the reverse painted with a variety of flowers. With handles to each shoulder, heavily encrusted with flowers and with splayed feet, some damages, 26cm high. Also with a similar type two handled 19thc vase, with panels of brightly painted flowers to each side and heavily encrusted with flowers, 30.5cm high. Both unmarked. (2)
 £100-150



1634
DATED ENGLISH 19THC TANKARD - JANE PETERS PERRYMAN
 a small tankard painted with sprigs of flowers and moulded decoration, marked in brown lettering Jane Peters Perryman, 1849, 8cm high. Also with a coalbrookdale style porcelain basket, and a pair of French Vauve Perrin faience flower vases (20cm high). (4)
 £80-120



1635
PORCELAIN FIGURE OF A LADY & DOG
 probably by Jacob Petit, modelled as a lady seated on a stool, with a dog in her lap looking at its reflection. Underglaze blue mark to the base, JP. 14cm high
 £60-100



1636
LARGE DOULTON BURSLEM DINNER SERVICE - MONOGRAM
 a large bone china white dinner service with gilded rims, each piece with a monogram C or G. Comprising 4 tureens of various sizes, meat drainer and 3 other graduated meat plates, 2 gravy boats and dishes, 14 dinner plates, 12 smaller plates, 8 side plates, 8 large bowls, various dishes etc. Marked Doulton Burslem, Pattern 7721 on one meat plate.
 £80-120



1637
LARGE ITALIAN FAIENCE
LUSTRE DISH - RUBBOLI

the lustre dish painted in the centre with various Roman soliders and figures, with one having his feet washed. With a border of mythical figures on a blue ground. Painted marks, SCU (Societa Ceramica Umbra, AR monogram. 38cm diameter

£80-120



1638
KPM BERLIN - PORCELAIN
POLAR BEAR

a porcelain blanc de chine model of a striding polar bear, blue sceptre mark. 24cm long, 14cm high

£60-100



1639
PAIR OF PALISSY TYPE
PLATES - FISH

a pair of plates each modelled with fish and eels on a bed of foliage, with a dark brown mottled glaze and modelled with shells around the rim. Impressed marks to both (difficult to read), various chips to both plates. 23cm diameter. (2)

£60-100



1640
MINTON MAJOLICA
JARDINIERE

an urn shaped jardiniere with ribbon and laurel wreath shaped handles, with repeating motifs to the rim and body and with a dark blue glaze. Impressed marks, Minton, 991, and date code (date code difficult to read). 32cm high

£150-250



1641
KPM PORCELAIN PLAQUE -
SIGNED 'M BEETZ'

an oval plaque painted with a 3/4 length portrait of a girl with red hair, wearing velvet clothing and with her arms crossed. Signed, M Beetz, Dresden (only part visible). In a modern frame, plaque 17cm by 12.5cm

£100-200



1642
19THC PORCELAIN PLAQUE
- FRUIT

possibly by Derby, the porcelain plaque painted with a variety of fruit including grapes, strawberries and plums. In a gilt wooden frame, plaque 21.5cm by 17cm, frame 34cm by 30cm

£100-150



1643
FRAMED SEVRES
TOPOGRAPHICAL PLATE

a circular porcelain plaque painted with a shepherd and sheep on a cliff top, overlooking a rocky coastal scene. Marked to the back, de Sevres (in red), No 18, Vue des isles de la Trippa, le Berger et la Mer. Mounted in a modern frame. Frame 30.5cm square

*This plate appears to have been made in the style of the famous Fond Pourpre Fable plates 'Service de L'Archicancelier', a service made in early 19thc. A plate with the same title was sold in a group lot at Christies in 2010, lot 650, Auction 2350.

£100-200



1644
MEISSEN FIGURES

including a late 19thc male figure seated next to a large jug, the jug with painted and encrusted flowers, Blue crossed swords mark and impressed numbers (107 and 904). Also with a similar female figure possibly earlier in date (jug restored), Blue crossed sword mark. 19cm and 18.5cm high. (2)

£150-250



1645
PAIR OF MEISSEN FIGURAL
CANDLESTICKS

a pair of classical figures each resting against a tree branch with vines and berries on one and flowers on the other. With leaf form candle holders and scrolling rococo style bases, some damages. Crossed swords mark, 42 in gold, and impressed numbers 2732 and 3730. 29cm high. (2)

£100-150



1646

FAIENCE POTTERY CABINET

probably French in the form of a cabinet, painted to the front and sides with a variety of figures including a musician, dancers etc, with a hinged door revealing shelves painted with flowers. Marked to the base with a Windmill in blue. 24cm high

£80-120



1647

PAIR OF BERLIN BLACKAMOOR SALTS & COVERS

a pair of porcelain figures one with a headdress, each next to a lidded dish painted with panels of flowers and with an oval shaped base. Each with a Berlin sceptre mark in underglaze blue. 18cm high. (2)

£80-120



1648

MEISSEN FIGURES

including a late 19thc figure of gardener (incised G100), two figures woodworking (G114) and a figure by a boiling kettle (G97), some damages. Also with a Meissen teapot stand, and a large German porcelain group of two figures. Gardener 12.5cm high. (5)

£100-150



1649

GILT METAL & PORCELAIN INKSTAND

the porcelain painted with a bird and flowers within a panel, with further painted flowers to the inkwells and mounted with a metal pen holder in the form of dolphins, 20cm across. Also with an unusual continental porcelain goblet, the bowl painted with cherubs and with a gilded interior, the goblet supported by various figures around the base (hairline crack, 13cm high). (2)

£60-100



1650

PAIR OF LARGE CHELSEA STYLE PORCELAIN CONTINENTAL FIGURES

the porcelain figures brightly painted with one figure wearing a wide brimmed hat with a dog around the base, the lady with a sheep by her side. Both figures seated and with circular floral encrusted bases, both bearing Gold Anchor marks. 27.5cm high and 26.5cm high. (2)

£100-150



1651

PAIR OF SEVRES STYLE PORCELAIN URNS & COVERS

with a bleu celeste ground with gilded decoration, and with sections painted with garlands of flowers. One urn with a vignette painted with flowers in a basket and a garden rake, the other painted with a bird, flowers and scythe, each vignette surrounded by a garland of leaves and the urns mounted on a square pedestal foot. With a Sevres style interlaced mark and 'D'. 25cm high. (2)

£200-300



1652

CAUGHLEY PART TEA SERVICE

late 18thc and comprising a teapot, sugar bowl (no lid), slop bowl and side plate, three saucers, two tea bowls and one tea cup. Each with fluted bodies and decorated with blue and gilt leaves, and leaf borders on a dark blue ground. Some damages, Crescent marks to the saucers and tea bowls, teapot 17cm high

£80-120



1653

19THC TEA SERVICE

an early 19thc tea service possibly Hilditch or Coalport, comprising a teapot, two lidded bowls, five saucers and eight cups. Each painted with panels of flowers and gilded decoration, and with dark blue bands. One lidded bowl with pattern no 629, some damages. Teapot 14.5cm high.

£100-150



1654

DRESDEN PORCELAIN PUG DOG

a seated porcelain figure of a pug dog, early 20thc. Dresden blue mark to the reverse. 21cm high

£100-150



1655
PAIR OF MEISSEN VASES & COVERS

a pair of late 19thc vases in the manner of Boucher, with painted panels to each side with depictions of mothers and children on a yellow ground. With pierced lids with wreath finials and snake entwined handles (one with handle broken and small restoration to lid) and mounted on a square base. Both with Blue Crossed Swords marks and with impressed numbers. 27.5cm high. (2)

£200-300



1656
PAIR OF MEISSEN VASES & COVERS

a pair of late 19thc vases in the manner of Boucher, with painted panels to each side with depictions of Venus and Psyche on a cobalt blue ground. With pierced lids with wreath finial, entwined snake handles and on a square shaped base. Blue crossed swords mark to both, one with impressed numbers (133, F26). 27.5cm high

£400-600



1657
SEVRES PORCELAIN BOWL

possibly late 18thc or early 19thc, the bowl painted with scalloped shaped panels to the interior and exterior, painted with various cherubs and panels of flowers and foliage against a pink ground. The panels and rim with gilded decoration, marked to the base with Blue interlaced mark. 22.5cm diameter

£200-300



1658
19THC ROYAL WORCESTER TUREEN - BENGAL GRENADIERS, INDIAN INTEREST

an oval shaped lidded tureen with a dark blue band and gilded decoration, with a crest for the Bengal Grenadiers. Also with a matching dish but without a crest. Lidded dish with Royal Worcester mark to the underside of the lid. 29cm across. (2)

£80-120



1659
PALISSY STYLE DISHES & 18THC ENGLISH SAUCEBOAT

including a dish modelled with a frog in the centre and circled by a snake and lizard, on a moss effect ground and insects to the rim, stamped J.A.C, 22cm diameter. Also with another palissy style dish, modelled with a crab, eels and sea shells and foliage, with a retail label for a shop in Gibraltar, 23cm diameter. Also with a 18thc English blue and white porcelain sauceboat, with painted and moulded decoration (cracked), 18cm long. (3)

£60-100



1660
PATE SUR PATE PORCELAIN TABLE LAMP

probably French, with a celadon type glaze and with a depiction of a classical figure on one side and decorative swags to the reverse. With brass mounts and base, and supported on four feet. 48cm high overall

£100-150



1661
18THC DUTCH DELFT DISH
a large delft blue and white dish, painted in the centre with a vase and a variety of flowers, with further flowers and foliage in a border around the rim. 38cm diameter

£80-120



1662
LARGE POTTERY FIGURE - MOORISH WARRIOR

an unusually large painted pottery figure of a Moorish warrior, holding a sword in his hands and with moulded leaves around the base. Unmarked, 72cm high

£80-120



1663
19THC PORCELAIN PLAQUE - STILL LIFE

possibly by Derby, the centre painted with a vase on a side table with a wide variety of brightly painted flowers, with a gilt type frame. Cracks in places, 23.5cm by 20cm

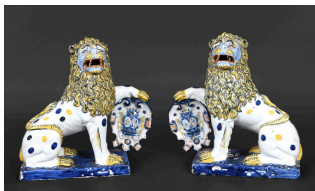
£100-150



1664

SEVRES COFFEE CAN & SAUCER

probably late 18thc, both painted with borders of roses and with gilded flowers on a dark blue ground. Painted marks, Sevres interlaced mark, MM (1789), DT (possibly Dutanda), HP (possibly Henry Prevost). Gilding and paint losses in places, also with a Meissen style double salt dish. Saucer 13.5cm diameter, Cup 7cm high. (3) £80-120



1665

PAIR OF FRENCH FAIENCE HERALDIC LIONS - SIGNED

possibly Rouen, each modelled as a lion on its haunches with one paw resting on a heraldic shield. With a blue glazed rectangular base. Marked to the base HV in blue. 24.5cm high. (2) £150-250



1666

EARLY ENGLISH DELFT PLATE - 'MS'

possibly Brislington, the plain delft plate with initials 'MS' in blue to the centre. With notes to the reverse with reference to a chapter on Bristol Pottery. 22cm diameter £80-120



1667

19THC ENGLISH PORCELAIN PLATE - BIRDS

the plate painted in the centre with a cockerel on a tree branch and with various birds and flowers. The rim painted with butterflies and sprays of flowers and with a gilded rim. Unmarked, 22cm diameter £100-150



1668

PEARLWARE

including a blue and white tankard with a transfer printed design of buildings by a lake, and a steamer and small fishing boat (13cm high), a pearlware plate with Egyptian scene, a tureen base, ladle and two saucers. Also with a spongeware cow creamer with collection label (C K Buckingham Collection), and a creamware figure of a lady. Various damages. (8) £100-150



1669

PAIR OF 19THC ROYAL WORCESTER AESTHETIC MOVEMENT PILGRIM FLASKS

in the Chinese style and possibly designed by Christopher Dresser, the flasks painted and enamelled in the cloisonné style with various foliage, with lobed gilded handles and scrolling base. Impressed Royal Worcester marks, 28cm high. (2) £300-500



1670

LARGE DUTCH DELFT PLAQUE

a large 19thc pottery plaque, brightly painted with a frozen lake scene including figures ice skating, horse-drawn sleighs, and various figures. With a building in the foreground and the background with further buildings and a windmill. Unmarked, 57cm by 47cm £150-250



1671

18THC DELFT DISH

a blue and white dish painted with buildings within an oriental style landscape, damaged 30cm diameter. Also with a delft bowl painted with sprays of flowers (23cm diameter) and three various vases, various damages and restoration. (5) £100-150



1672

ANTIQUE COFFEE CANS & SAUCERS

a mixed lot including a Flight Barr Barr coffee can and saucer, with a green band and gilded decoration. Also with a Derby imari coffee can and saucer, a pair of Derby coffee cans & saucers, various other unmarked coffee cans and saucers, and some individual coffee cans including Derby examples. £100-150



1673

COLLECTION OF 19THC COFFEE CANS

a collection of 26 various coffee cans, mostly English including imari example (pattern 1823), probably Spode), another with pattern no 1495 (probably Spode), Copeland, a coffee can with figure in relief, imari coffee can (pattern 246), Spode 742, Spode 960, etc. Also with a Vienna coffee can. (26)

£100-200



1674

ANTIQUE DELFT PLATES

mostly 18thc, including three painted in various colours, including one with an oriental style figure, one with floral sprays and one with an exotic bird on a rocky outcrop. Also with eight various blue and white plates, one painted with a Chinese style figure in a landscape. Various damages. (11)

£100-150



1675

RARE SPODE POT POURRI COVER & LINER - GROUPS PATTERN

a large and rare pot pourri circa 1815-1820, with pierced lid and with an internal cover, transfer printed in blue and white with a variety of flowers and foliage. Painted with underglaze and overglaze enamels with flowers and leaves on a red ground and with a circular base. Marked to base Spode (part of lettering missing, 1589, 1589 also marked on base of internal cover. 33cm high

£1500-2000



1676

19THC PORCELAIN PLAQUE

possibly by Derby, the circular concave plaque painted with a variety of flowers and fruit and with a gold border. Mounted in a mahogany frame, plaque 23.5cm dia, frame 28cm dia.

£100-150



1677

LARGE ITALIAN MAIOLICA OLIVE JAR

the large jar brightly painted with fruit and foliage, with green and yellow bands around the rim and handles and with an opening at the front. 50cm high

£100-150



1678

18THC WORCESTER TANKARD - LANDSCAPE SCENE

a large porcelain tankard of cylindrical form, the front painted with a landscape scene within an oval panel with leaf border. Also painted with sprigs of flowers and leaves, and with a blue and gilt border to the rim and base rim. Restoration to section of the body and base rim, Blue Crescent mark to base. 15.5cm high

£150-250



1679

LARGE 19THC PORCELAIN PLAQUE - WESTWOOD HALL, SEAT OF JOHN DAVENPORT

probably painted by Jesse Mountford, the large rectangular porcelain plaque painted with a view of Westwood Hall and its grounds. In a wooden frame, marked to the reverse Westwood Hall, The Seat of J Davenport Esq. Plaque 31.5cm by 25cm.

*Westwood Hall near Leek was the home of John Davenport, owner of the Davenport factory. Jesse Mountford began working at Derby, leaving for Coalport in 1821. In 1835 he was in Staffordshire working for the Davenport factory. A similar plaque was sold by Bonhams, lot 314, 20/11/19.

£300-500



1680

LARGE PORCELAIN BOLOGNESE TERRIER

in the style of Meissen, the porcelain model of unusually large size with the dog seated on its haunches. Just marked with a number to the base, 8565. 36.5cm high, approx 50cm long

£400-600



1681

19THC MAW & CO ENCAUSTIC TILES

38 various encaustic floor tiles, made by Maw & Co, Benthall Works, Salop. Including 15 matching tiles, 14 matching tiles, 8 matching tiles, and 1 single tile. (38)

£150-250



1682

FOUR CONTINENTAL PORCELAIN FIGURES

probably German, one figure modelled playing a lyre, one sculpting a bust, and two other similar figures, each with a blue sword type mark, tallest 21cm high. Also with a Derby style figure. (5)

£100-150



1683

HEREND BREAKFAST SET - ROTHSCHILD BIRD

comprising a oval dish (31cm across), small coffee pot (17cm high), lidded sugar bowl and milk jug, six saucers (11.5cm dia), six coffee cups, one side plate and two segment dishes.

£100-150



1684

LIMOGES CASED & SILVER MOUNTED COFFEE SET - GOLDSMITHS & SILVERSMITHS

a Limoges porcelain coffee set with a painted floral design and gilded rims, the coffee cups with pierced silver mounts with cherub form handles (one cup damaged). In a fitted case and marked for Goldsmiths & Silversmiths, Regent St London. Silver hallmarks for London 1925.

£80-120



1685

ROYAL WORCESTER - SIGNED ITEMS

five various items including a two handled globular vase painted with roses signed E M Fildes (13cm high), and a jug of tapering form by the same artist (20.5cm high). Also with a small pot pourri signed M Hunt (11cm high), and a small dish and menu holder signed by E Townsend. (5)

£100-150



1686

FLIGHT BARR & BARR WORCESTER CUP & SAUCER - FAMILY CRESTS

possibly made for a marriage with two family crests including a lion within a gilded border, with a maroon ground and gilded rims and decoration. Also with a blue and white porcelain two handled cup and saucer, painted with floral sprigs and with a well in the saucer for the cup (unmarked). Worcester marked Royal Porcelain Works, Flight Barr & Barr, Worcester, Coventry St, London. Saucer 15cm diameter. (4)

£80-120

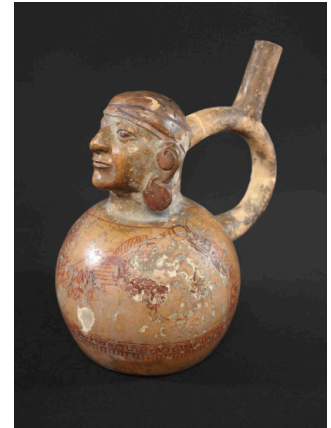


1690

ANGLO INDIAN IVORY INLAID BOX

a late 19thc hardwood rectangular box, inlaid in ivory and bone with various flowers and foliage and repeating borders around the rim. 33cm by 23cm, 12.5cm high

£150-250



1691

MOCHE STIRRUP VESSEL - PERU

circa 1st to 5th Century AD, a pottery portrait stirrup vessel with curved handle, and with various painted decoration to the globular body.

Provenance - Sir William Whitfield CBE.

£150-200

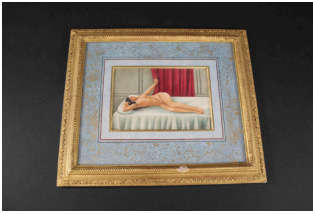


1692

KOREAN POTTERY VESSEL - SILLA DYNASTY

circa 5thc AD, the circular pottery vessel with lid. 12cm high

£100-150



1693
INDIAN SCHOOL PAINTING
- RECLINING NUDE, R.S
NEPALIA

a framed painting with a depiction of a reclining nude figure on a bed, signed R.S. Nepalia, S.A. Auvor, 2.1.27. With a crackle glaze mount and gilt wooden frame. 15.5cm by 10.5cm, frame 31cm by 26.5cm

£100-150



1694
THAILAND - POTTERY
ELEPHANT, SAWANKHALOK

a pottery elephant with grey celadon glaze, possibly 14th/15thc. 14cm high

£150-200



1695
KHMER BRONZE BUDDHA -
CAMBODIA

a Khmer Naga enthroned Buddha, Cambodian and possibly circa 12thc AD. Mounted on a wooden plinth, 17cm high overall

*Formally owned by a gentleman who worked at the British Council in Bangkok as a diplomat in the 1960s.

£200-300



1696
TWO LARGE BURMESE
BRONZE OPIUM WEIGHTS

the largest in the form of a Lion with tongue hanging down and with a curved handle, 23cm high. Also with another bronze opium weight in the form of a mythical animal, 19cm high. (2)

£100-150



1700
CHINESE BLUE & WHITE
PORCELAIN BARBERS
BOWL

probably late 18thc, a large porcelain blue and white barbers bowl, the well painted with flower bosses and foliage, the rim with further panels of flowers, assorted birds and cross shaped motifs. The reverse with further painted flowers, 34cm across

£200-300



1701
18THC CHINESE IMARI DISH
a decagonal shaped dish with fluted sides, painted in imari colours with various flowers and foliage and a red and blue border around the rim. 22.5cm by 22.5cm

£200-300



1702
CHINESE CHAMPLEVE VASE
Qing Dynasty, a small champleve enamelled vase with a blue and turquoise pattern on a speckled gilt bronze body. 18cm high

£80-120



1703
CHINESE SILK ROBE

a late 19thc/early 20thc blue silk Chinese robe, with silk embroidered decoration, narrow sleeves and cross over fastening. Decorated with various birds, flowers and insects, the garment appears to have had some alterations. 121cm high

£200-300



1704
CHINESE SILK ROBE

of red silk, decorated with silk and couched metallic thread embroidered images, cross over fastening and blue embroidered sleeve bands. Decorated with mythical beasts, flowers and Chinese symbols, with possible alterations. 110cm high

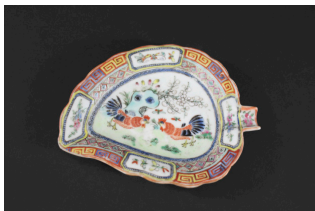
£200-300



1705
CHINESE SILK SKIRT

a pink silk pleated Chinese skirt embellished with panels of vibrant butterfly embroidery, with possible alterations. 89cm high including straps

£150-200



1706
CHINESE FAMILLE ROSE DISH

a leaf shaped dish with stalk handle, painted in strong enamels with fighting cocks and a blossom tree in the centre, and with various flowers and insects to the border. 16cm across

£150-250



1707
PAIR OF 19THC CHINESE CLOISSONNE VASES

a pair of bulbous vases, designed with various flowers, foliage and birds on a black ground. 23.5cm high. (2)

£200-300



1708
CHINESE CANTON FAMILLE ROSE ARMORIAL PART SERVICE - GRANT

early 19thc including a large lidded tureen, painted with a variety of court figures and attendants within a landscape scene, the borders with various flowers and insects and with an armorial to the lid and base (Craiglachie Stand Fast, and a crest for Grant). Also with a matching oval dish, a smaller lidded tureen, small dish and a plate. Large tureen 34cm across, 26cm high. (5)

*This armorial is illustrated in Chinese Armorial Porcelain by David Sanctuary Howard, page 1002.

£1000-1500



1709
19THC PALE CELADON CHINESE JADE BRUSH WASHER

carved with branches of flowering prunus, 12cm long. Also with a 19thc Chinese painted enamel tapering square cup, with two fish form handles, the front and back painted with immortals and the sides painted with deer, 11cm across. (2)

£100-150



1710
CHINESE SNUFF BOTTLES

a collection of 15 late 19thc and 20thc various snuff bottles, some in porcelain, glass, hardstone, horn and other examples. Some signed, largest 11.5cm high. (15)

£100-150



1711
RARE 18THC CHINESE BLUE & WHITE EXPORT TUREEN & COVER

a rare Chinese export blue and white rococo style tureen and cover, circa 1760 and made for the French market. Modelled after a silver or faience shape with frond handles and rococo foliage, and standing on four leaf scroll feet, painted with panels of flower blooms. Damages and repairs to the lid, 31cm high

£500-700



1712
LARGE CHINESE LIDDED JAR

probably early 20thc, the large globular jar painted on one side with a variety of figures. The reverse with various character marks, and further character marks to the lid. Finial repaired and with a label to the base and marked 4-12-17, and with a wooden stand. 26.5cm high

£60-100



1713
LARGE CHINESE CLOISSONNE BOWL & COVER

20thc, a brass and cloisonné bowl and cover decorated with a variety of flowers and butterflies. With a wooden stand, 25cm diameter

£50-100



1714
19THC CHINESE
PORCELAIN JAR & COVER

a large jar with a dark blue glaze and brown stained rim, with a pierced hard wood wooden cover mounted with a jade figure. With a wooden stand, star cracks to the base, 28.5cm high, 37cm high including cover and jade figure
£100-150



1715
CHINESE BLUE & WHITE
DISHES

including a 19thc blue and white porcelain dish painted with a variety of figures in various poses, Kangxi marks but 19thc, 25cm diameter. Also with two 18thc blue and white dishes. (3)
£60-100



1716
JAPANESE WOODCUT
PRINTS

three woodcut prints finished by hand, including Black Crow on a willow branch (after Seiko), A pair of Moorhens (after Seiko), and a woodcut of an Owl in flight. Owl 37cm by 20cm (including frame). (3)
£50-100



1717
TWO CHINESE MODEL
JUNKS

probably silver, the masted boats mounted on wooden stands. With Chinese character marks to the end of each boat, 22cm and 19cm high (including stands). (2)
£150-200



1718
JAPANESE SIGNED BRONZE
VASE

a slender bronze vase inlaid with cranes or storks in flight, signed with three character marks to the body and signature to the base. 27cm high
£80-120



1719
CHINESE CARVED AGATE
BRUSH WASHER

a 18th or 19thc agate brush washer, carved with chilong to the sides and rim of the bowl. Some damages, also with a carved hardwood stand. 18.5cm by 13.5cm at widest point
£800-1200



1720
CHINESE CANTON
GARNITURE - FAMILLE ROSE

19thc, including a pair of cylindrical vases with flared rims, painted to each side with court figures and their attendants, also painted with vases, flowers and insects (25.5cm high). Also with a matching lidded vase with dog of fo handle (lid damaged), 28.5cm high. (3)
£150-250



1721
CHINESE BLUE & WHITE
PORCELAIN VASE

a late 19thc sleeve vase painted with prunus blossom on a blue ground, with blue character marks to the base (36cm high). Also with a small Chinese famille rose mid 19thc tankard, painted with various figures and with a double strap handle (10cm high), and a small Chinese 18thc ovoid vase painted with flowers and foliage (10cm high). (3)
£100-150



1722

LARGE CHINESE PUNCH BOWL

a large 18thc punch bowl, painted to the interior with a spray of flowers and rope twist border. The exterior painted with a variety of fruit and flowers, and with a key fret border around the base rim. Two hairline cracks to rim, 39cm diameter

£100-200



1724

CHINESE BLUE & WHITE PLATTER

an 18thc platter, the centre painted with peacocks and a variety of flowers and foliage (35cm by 25cm), also with four similar blue & white plates, a pair of blue and white dishes with a pagoda at the centre, and one other dish. (8)

£100-150



1726

CHINESE BLUE & WHITE TANKARD

probably 19thc, painted with a variety of figures and buildings within a landscape, and with a dragon form handle (13.5cm high). Also with a two handled cup with dragon handles (one handle damaged), a blue and white tea caddy, three various tea cups and a saucer. (7)

£80-120



1728

18THC CHINESE BLUE & WHITE DISH

an unusual dish with a dome top centre painted with flowers and foliage, the crimped rim with further panels of flowers (23cm diameter). Also with a 18thc oval blue and white dish (32cm across), another 18thc blue and white dish, and a tureen base and lid (not matching, handles missing). (4)

£100-150



1723

JAPANESE LACQUERED TABLE CABINET

a late 19thc lacquered and brass bound cabinet, each side including the back with panels decorated with a variety of gilded birds, flowers, and landscape scenes including Mount Fuji. The interior with six drawers and with a drawer to the base, and with various brass fittings and carrying handles. 40cm high, 39cm across, 25cm deep

£100-200



1725

CHINESE ROULEAU BLUE & WHITE VASE

a late 19thc vase with shaped panels to each side painted with a vase and jardinière on small tables with flowers and foliage, the panels surrounded with prunus blossom on a blue ground. Kangxi character marks to base but 19thc, 31cm high

£80-120

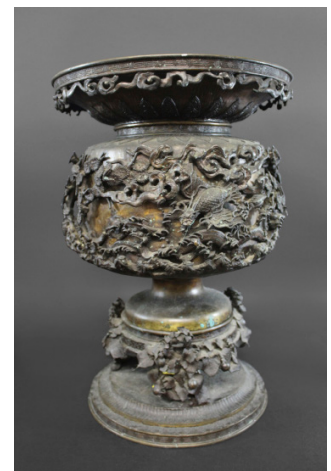


1727

19THC CHINESE FAMILLE ROSE JAR & COVER

of globular tapering form and with a domed top lid, the alternating panels painted with a variety of figures, and with exotic birds, insects and flowers. 26cm high

£100-150



1729

LARGE CHINESE BRONZE JARDINIÈRE

late 19thc the jardinière in three sections, the top section with raised design with dragons amongst tree blossom and clouds, and with a key fret border around the rim. The base section with further foliage and key fret border. 54cm high

£150-250



1730
JAPANESE IVORY OKIMONO OF A BIJIN - SIGNED
 Meiji period, the figure wearing a floral okimono and a dappled shawl and standing holding a fan in her right hand and a gourd in her left. Signed to the base, possibly Hideru or Shu. 19cm high
 £150-250



1731
JAPANESE IVORY OKIMONO OF AN IMMORTAL - SIGNED
 Meiji period, the figure wearing flowing robes and a shawl, standing holding a gourd in his right hand and a gnarled staff in his left hand. Signed to the base, possibly Mitumasa. 21.5cm high
 £150-250



1732
SET OF SIX CHINESE BLUE & WHITE PLATES
 probably 18thc, with a central panel painted with trees and foliage and with a cross hatch to the centre and rim (some damages, 23cm dia). Also with two Chinese armorial bowls (damaged), 14cm diameter. (8)
 £60-100



1733
PAIR OF CHINESE PORCELAIN WALL POCKETS
 probably Republic Period of curved form, one painted with a seated figure reading, the other with two figures seated in a garden. Painted in yellow and turquoise enamels, and both with various character marks. 24cm high. (2)
 £100-150



1734
JAPANESE ENAMEL GINBARI CLOISONNE VASE
 a Meiji period red ground ginbari enamel vase, decorated with various flowers and foliage. Unmarked, 25cm high
 £150-200



1735
CHINESE BLUE & WHITE VASE
 a porcelain sleeve vase painted with prunus blossom, double circle mark to base (35.5cm high), also with a jar & cover (lid damaged, 27cm high), and a vase with similar decoration (drilled, 29.5cm high). (3)
 £100-150



1736
A PAIR OF CHINESE PAINTINGS
 possibly by San Yang, two paintings including a scholar reading with an attendant, the other of a figure smoking and a lady bringing tea. Both signed and framed, 31cm by 31cm
 £100-150



1737
CHINESE PORCELAIN
LIDDED VASE

Guangxu mark and probably period (1875-1908), a two handled square shaped porcelain vase, painted with panels of birds and flowers on a pink floral ground. The lid with five pierced holes, Guangxu four red character marks to the base. 13cm high
£500-700



1738
CHINESE LAMP
a bronzed Chinese lamp, with panels of decoration including Dragon's, flowers and tree blossom. Mounted on a wooden stand. 50cm high (excluding bulb holder).
£80-120



1739
JAPANESE BRONZE VASE -
SIGNED
the vase with a fluted rim and tapering neck, with a bird of prey on a tree branch and with various flowers. Signed to the base, 32cm high. Also with another bronze vase in the Japanese style, 31cm high. (2)
£60-100



1740
CHINESE RICE PAINTINGS
a collection of loose rice paintings, including various figures including a lady seated on a horse, various depictions of Chinese boats, butterflies and insects, flowers etc. In mixed condition.
£80-120



1741
COLLECTION OF CHINESE
SEALS
late Qing Dynasty, including a white and pale green jadeite cylindrical seal mounted with a Buddhist lion (5.5cm high), two spinach jade seals surmounted with lions (6cm high, no seal marks), a pair of beige and brown flecked reddish soapstone mountain form carvings in shallow relief (12.5cm high), a bronze square seal surmounted with Buddhist lion (5cm high), and three other carved soapstone seals. Also with a small Chinese box with seal inside. (10)
£150-250



1742
LARGE CHINESE CHIA
CH'ING BLUE & WHITE
JAR & COVER, & WOODEN
STAND
Jiaqing period and circa 1800, of large size the baluster jar painted with a continuous mountain landscape with trees, buildings and a fishing boat. With floral borders around the rim and base rim, with a hardwood pierced cover carved with panels of flowers and with a large wooden stand. Jar (excluding lid, 45cm high), with cover 58cm high, stand 75cm high
£1000-1500



1743
19THC CHINESE HAND
PAINTED FOLDING SCREEN
a large and impressive five fold mahogany framed folding screen, each panel brightly painted with a variety of figures and scenes. Including a variety of warriors on horseback, court figures and their attendants, various buildings with figures in conversation, landscape scenes including mountains etc. Each panel glazed, with brass hinges to each section and the back of the screen with material covering. Each panel 208cm high by 54cm across (including frame).
£3000-5000



1744
JAPANESE KAKIEMON DISH
a lobbed dish painted with tree blossom in blue, red and white colours. Bears a Chinese Chenghua mark. 20cm diameter
£100-150



1745
CHINESE JADE BANGLE
a plain white jade bangle, 7.5cm diameter
£50-80



1746

CHINESE MOTHER OF PEARL COUNTERS

approx 135 mother of pearl counters in a variety of shapes, in a 19thc rosewood and crossbanded box with metal corners.

£80-120



1747

JAPANESE PORCELAIN DISH

a blue and white porcelain leaf shaped dish with stalk handle, painted with a figure within a landscape and supported on three feet. 15cm across

£100-150



1748

JAPANESE OKIMONO IVORY FIGURE - SIGNED

Meiji period, a carved figure of a gentleman standing on the back of a lion, holding a box in one hand and a fan in the other (fan chipped), with a tengu standing on his shoulder and holding a peach. Signed to the base, possibly Shingyoku (possibly Hashimoto Shingyoku).

20cm high

£100-150



1749

CHINESE FAMILLE ROSE 'BAJIXIANG' BOWL

Jiaqing seal mark and possibly of the period, painted to the exterior with the bajixiang (Eight Buddhist Emblems) divided into four pairs, each tied together with a brocade ribbon, between a band of iron red key fret at the rim and ruyi above the foot (with old paper label inside, some damages, 10.5cm diameter). Also with a Chinese blue and white tankard, probably 18thc, 14cm high. (2)

£300-500



1750

CINNABAR LACQUER DISH

probably 19thc, of rectangular shape and carved in the centre with various figures within a landscape, the rim with carved flowers and foliage, and further carved flowers to the reverse. Supported on four feet, 20.5cm by 14cm

£60-100



1751

CHINESE BRONZE CENSER - SEAL MARK

a small bronze censer with curved handles and supported on three tapering feet. Ming Xuande mark, but probably 18th/19thc. 11.5cm across, 8cm high

£200-300