



19th/20th Century Design

THURSDAY 14TH OCTOBER



Simon Jones

19th/20th Century Design Specialist

simon.jones@lawrences.co.uk



1497

JOHN MAKEPEACE - INDIAN ROSEWOOD & SYCAMORE BOOKCASE

the top section with two cupboard doors with leather tab handles and internal shelves. The bottom section with two drawers and cupboard doors, with further leather tab handles and an internal shelf to the cupboard. 198cm high
*Mr Makepeace confirmed that this was made using Indian Rosewood and therefore does not require a licence to sell in auction. It was commissioned in 1965 when Mr Makepeace was still based at Banbury in Oxfordshire.

£300-500



1498

ERCOL VINTAGE ROOM DIVIDER

designed by Lucian Ercolani for Ercol, Model no 363 'Giraffe' room divider, light elm and beech with two adjustable shelves and the cupboard with internal shelf. With Ercol foil label. 190cm high

£400-600



1499

RARE ERCOL VINTAGE SIDEBOARD

circa 1969, an unusual light elm and beech sideboard with two small central drawers with cutlery compartments, flanked by drawers on each side. Supported on beech legs with a cross stretcher. 134cm across, 81cm high

*This model is shown in Ercol Furniture In The Making by Lesley Jackson, Page 88, it is shown from a page in the 1969 catalogue.

£200-300



1500

ERCOL VINTAGE DAY BED/STUDIO COUCH

Model no 355, and designed by Lucian Ercolani for Ercol, the light elm and beech couch with a wide panel back and open arms with spindle supports. With a large cushion and webbing, and with a Ercol label underneath. 205cm across

£500-700



1501

HANS WEGNER - CARL HANSEN & SONS DANISH DESIGNER CHAIRS

a set of eight CH23 dining chairs, made in teak and beech with curved backs and rush seats. 75.5cm high. (8)

£600-800



1502

ELLIOTTS OF NEWBURY - MID CENTURY SIDEBOARD

a zebrano teak rosewood effect 'floating' sideboard, with four central drawers and flanking cupboards to each side. With tapering legs on each side and supporting stretcher, no makers label. 185cm long, 45cm deep, 77cm high

£150-250



1503

ERCOL PANDORA COFFEE TABLE

Model No 735, a light elm square shaped coffee table with two drawers on one side. 79.5cm square, 39.5cm high

£150-250



1504

ERCOL WARDROBE

a large light elm wardrobe, the top section with two doors to reveal a shelf and hanging rail. The bottom section with two large drawers. 200cm high, 91cm across, 61cm deep

£300-500



1505

ERCOL SIDEBOARD

a light elm sideboard with a two door cupboard with shelf, and a single cupboard with cutlery drawer. With two drawers to the base, 129cm across, 43.5cm deep, 76cm high

£100-150



1506
ERCOL DINING ROOM SUITE

comprising a light elm sideboard with a two door cupboard, and a single cupboard with cutlery drawer. With two drawers to the base, 128.5cm across. Also with a drop flap dining table and three stick back chairs (chairs stamped 960, 2056). (5)

£150-250



1507
HEAL'S LIMED OAK TALLBOY/CUPBOARD - AMBROSE HEAL

a limed oak tallboy or cupboard with five various sized drawers, with a vertical rectangular shaped cupboard and a cupboard with two doors. Each drawer and cupboard with circular inset handles, no makers plaque. 152cm high, 113cm across, 51cm deep

*This appears to be a variation of a piece illustrated in A History of Heals by Susanna Goodden, page 25.

£300-500



1508
COTSWOLD SCHOOL SIDEBOARD - P HENSMAN

an oak sideboard with a slightly curved front, with four central drawers and two drawers on either side above cupboards with shelving. With half circle shaped handles and with a back rail to the top. Stamped on two drawers, P Hensman. 152cm across, 96cm high to top of rail, 42cm deep

* P Hensman is listed as a pupil at the Edward Barnsley Workshop from 1946-1950, as a pupil he would have received furniture training at the workshop.

£150-250



1509
COTSWOLD SCHOOL OAK CABINET - P HENSMAN

the glazed top section with sliding doors and glass shelves. The bottom section with a variety of drawers, two drawers are stamped P Hensman. 169cm high, 127cm across (base), 36cm deep (excluding handles).

*P Hensman is listed as a pupil at the Edward Barnsley Workshop from 1946-1950, as a pupil he would have received furniture training at the workshop.

£300-500



1510
COTSWOLD SCHOOL BOOKCASE

a well made oak bookcase with four adjustable shelves, glazed doors and panelled back, 122cm long, 95cm high. Also with a set of oak open bookshelves, signed underneath RTP, 5/58, 1, 188cm long. (2)

£80-120



1511
LARGE MODERN ERCOL 'RENAISSANCE' SOFA

a large three seater light ash sofa with curved back and arms, and with it's cushions. With an Ercol label underneath and fir regulations ticket dated 1999. 193cm across, 92cm high

£100-200



1512
MOORISH ARTIST EASEL

early 20thc, a hardwood easel with carved and inlaid decoration and bobbin turned panels, with a picture tray supported on wooden pegs and on a hinged support. Some damages in places. 174cm high

£100-150



1513
ART NOUVEAU FOLDING SCREEN - STAIN GLASS

a four fold mahogany screen with brass hinges, the top sections with staining glass panels with floral designs, the lower sections with material covering with floral designs.

191cm high

£100-200



1514
DANISH DESIGNER ROCKING CHAIR - 'JK'

a rocking chair with a teak frame, and a woven seat and back. Stamped JK, Made in Denmark, and with a sticker Furniture makers Danish control. 88cm high

£100-150



1515
DAVID LINLEY - DESIGNER COFFEE TABLE

a coffee table with a burr elm wooden top supported on straight legs to each corner, unmarked. 91cm by 70cm

£150-250



1516
DAVID LINLEY - PAIR OF CUPBOARDS

a pair of two door burr elm wooden cupboards, each with adjustable shelving. Unmarked, 120cm high, 70cm across, 40cm deep. (2)

£300-500



1517
DAVID LINLEY BOOKCASE/ DISPLAY CABINET

a large two door burr elm wooden bookcase with adjustable wooden shelving and glazed doors, some sun damage to the side panels. 132cm across, 101cm high, 40.5cm deep

£100-200



1518
DAVID LINLEY - TWO DOOR CUPBOARD

a small burr elm wooden two door cupboard with internal shelf, with pierced holes to the back probably for wiring. Some sun damage to the side panels, 105cm high, 53cm across, 46cm deep

£100-200



1519
DAVID LINLEY - LARGE DINING/REFECTORY TABLE & TEN CHAIRS

an unusually large ash top dining table of narrow rectangular shape, supported on straight legs to each corner, 334cm long by 78cm across, 76cm high. Also with a set of ten matching dining chairs with material covered seats and backs, 99cm high. (11)

£500-700



1520
G PLAN 'FRESCO' SIDEBORD

a teak sideboard with three drawers to the top section, the long drawer with cutlery compartment. With a two door cupboard to the bottom section and flanking cupboards to each side, supported on tapering legs and single front stretcher. No makers label, 151cm across, 84cm high, 45.5cm deep

£150-250



1521
CINTIQUE - PAIR OF MID CENTURY DESIGNER CHAIRS

a pair of wooden framed chairs, with black leather button upholstery to the seat and back. Label underneath, Cintique, British Patents Pending. 93cm high

£50-100



1522
D. R. DIMES - AMERICAN WINDSOR CHAIR

The Comb back writing arm Windsor chair, with a saddle seat and wide writing arm, and with a drawer underneath. Stamped underneath, D R Dimes. 113cm high

*D R Dimes is an American firm making good quality furniture in the 18th colonial style.

£150-250



1523
JAMES SHOOLBRED INDUSTRIAL STOOL

an unusual revolving top stool with a circular crocodile skin seat, supported on brass splayed legs and cross stretchers. With a metal plaque underneath, James Shoolbred, Tottenham House, London, and with numbers T3216. 47cm high

£100-150



1524
PAIR OF MID CENTURY ARMCHAIRS

a pair of teak armchairs with curved arms and spindle supports, with solid upholstered back and loose cushion, one chair stamped 2099, 83cm high. Also with a large teak three seater sofa with wide arms and slatted back, 190cm across. Each item with matching upholstery. (3)

£150-200



1525
YOUNGER - TEAK MID CENTURY SIDEBORD

a large teak sideboard with three central drawers (one for cutlery), flanked by two cupboards on each side. With a label inside, Younger, 209cm across, 49cm deep, 75cm high. Also with a matching dining table, 181cm by 77cm (no makers label). (2)

£200-300



1526
ERNEST RACE (1913-1964) ISOKON 'PENGUIN DONKEY' BOOKCASE

a Mark II open bookcase with white painted shelves on teak supports, circa early 1960s. 45cm high, 53cm long by 33cm

£250-300



1527
LARGE CARVED AFRICAN
SETTLE

of unusually large size, the back with two upright sections and panel across, heavily carved with flower heads and chevron patterns. Supported on four large feet with a large roundel to each front leg, and with a woven seat and large patterned cushion. 172.5cm high, 234cm across

£500-700



1528
BANG & OLUFSEN
RADIOGRAM - GARRARD

a mid century radiogram in a teak cabinet with twin hinged sectional top, with a Garrard turntable and a Bang & Olufsen Beomaster 900 radio. Also with various LP and single records. 156cm across, 69cm high

£60-100



1529
AFTER EMILE GUILLOT FOR
THONET - LEATHER & STEEL
DESIGNER DAY BED

a black leather daybed with tubular steel frame, with a cylindrical bolster cushion at one end.

191cm long, 86cm across

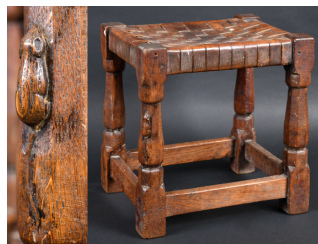
£700-1000



1530
ARTS & CRAFTS COPPER
FIRESCREEN

with a beaten copper panel designed with a peacock, and with two Ruskin style roundels. With wrought iron supports and handle. 68cm high, 51cm across at widest point

£100-150



1531
ROBERT THOMPSON OF
KILBURN - MOUSEMAN
STOOL

an early Mouseman rectangular oak joint stool with leather lattice work seat, supported on faceted baluster legs. With carved Mouse on one leg. 33.5cm by 26cm, 37cm high

£400-600



1532
ROBERT THOMPSON OF
KILBURN - MOUSEMAN
BOX

a rectangular shaped oak adzed box, with carved mouse to the lid. 19cm by 11cm

£200-300



1533
ROBERT THOMPSON
OF KILBURN - PAIR OF
MOUSEMAN BOOKENDS

a pair of oak adzed bookends, both carved with the mouse on each end. 15cm high

£150-250



1534
ROBERT THOMPSON OF
KILBURN - MOUSEMAN
BOWL

an oak adzed circular fruit bowl, with a carved mouse to the centre. 29cm diameter

£200-300



1535
ROBERT THOMPSON OF
KILBURN - MOUSEMAN

a mixed lot including two small oak dishes and two oak napkin rings. Dishes 10cm by 7.5cm. (4)

£80-120



1536
AFTER ANTOINE LOUIS
BARYE (1796-1875) - PAIR OF
BRONZE GREYHOUNDS

a large bronze sculpture of two greyhounds or whippets, mounted on a bronze plinth and with a marble base. Bears signature, Barye. 21.5cm high, marble base 36cm long

£200-300



1537
BRONZE SCULPTURE -
MOTHER & CHILD

a bronze sculpture with a depiction of mother with a child nestling in her arms, and on an irregular shaped base. With an impressed seal mark to the base, possibly a foundry mark. 21.5cm high

£100-150



1538
AFTER AUGUSTO MURER
(1922-1985) - BRONZE
FIGURE

a bronze figure of a boy with one hand behind his back and one by his side, the base bears a signature A Murer. Mounted on a marble plinth, 35cm high

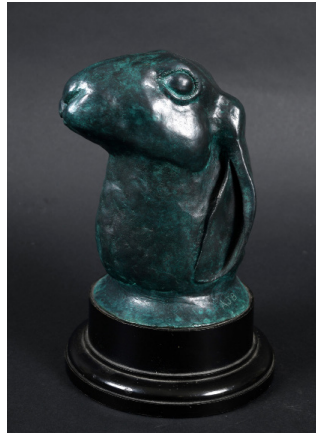
£80-120



1539
PAUL WUNDERLICH (1927-
2010) - BRONZE 'LITTLE
OWL'

a small patinated bronze figure of an owl, with a detachable head and mounted on a metal base. Signed to the base, Wunderlich. 14cm high overall

£100-150



1540
CONTEMPORARY BRONZE
HARE - SIGNED

a patinated modern bronze bust of a hare, mounted on a circular plinth. Bronze signed, AJB. 22cm high overall

£300-400



1541
VICTORIAN POTTERY,
IVORY, & SILVER PLATED JUG
& MATCHING BEAKERS

possibly designed by Christopher Dresser, each piece painted with flowers and star motifs and the bottom sections in green and gold. The jug with silver plated mounts and a vertical ivory handle, the beakers with silver plated rims. Matching marks to the silver plate and pottery bases, for John Grinsell & Sons, Birmingham, 279, 5517 (jug), 5518 (beakers), and impressed mark (very difficult to read). Jug 22cm high.(3)

£60-100



1542
PAIR OF MOORCROFT
CANDLESTICKS - LEAF &
BERRY

an unusual pair of salt glazed candlesticks, in the leaf and berry design and with a matt finish. Marked, W Moorcroft painted signature, and impressed marks Moorcroft, Made in England. 8.5cm high. (2)

£100-150



1544
MDINA AXE HEAD VASE

the glass vase with elongated neck, with a coloured glass core with a green case, 20cm high. Also with another Mdina axe head vase with elongated neck, turquoise and green core within green coloured case, 24cm high. Both vases unmarked. (2)

£120-180



1545
WHITEFRIARS TULIP VASE

Pattern No 9827 and circa 1974, a textured vase in the Tulip design in the lilac colourway. 24cm high

£150-200



1546
ART GLASS VASE

probably by Monart, the vase of curved shape with flared rim and with a green and orange flecked ground. Unmarked, 16cm high, 20cm diameter

£60-100



1547
PAIR OF STAINED GLASS
PANELS

a pair of stain glass panels mounted in one frame, with depictions of two female figures and leaves and berries, one figure with a dove on her hand, frame 90cm by 80cm. Also with two smaller circular stain glass panels, with depictions of a duck and an owl, 32cm diameter. (3)

£80-120



1548
MOORCROFT LIMITED EDITION VASE - HIDDEN AWAY
 a limited edition vase No 75/100, designed by P Hilditch and in the Hidden Away design. Marked, Moorcroft, 2012, 75/100, and signed by Hilditch. 21cm high
 £150-200



1549
MOORCROFT LIMITED EDITION - SMUGGLERS COVE
 a limited edition vase in the Smugglers Cove design, designed by Anji Davenport. Marked Moorcroft, signed by Anji Davenport, December 2017. 24cm high
 £200-250



1551
MOORCROFT TRIAL VASE
 in the Rock Rose design, marked Trial 7.10.2000, and signed by Shirley Hayes and dated 9/1/2001. Marked, Moorcroft, Made in England. 18cm high
 £100-150



1552
MOORCROFT TRIAL JUG - BLUE TIT
 a slender trial jug in the Blue Tit design, marked Moorcroft, England, and with original price label. 24cm high
 £100-150



1553
MOORCROFT TRIAL VASE - BADGERS
 a slender trial vase in the Badgers design, dated 29.7.16. Marked, Moorcroft, Made in England. 19.5cm high
 £100-150



1554
MOORCROFT VASE - HONEYCOMB
 a slender vase in the Honeycomb design, issued from 1987-1989 and designed by Philip Richardson. Marked, Moorcroft, Made in England, WM. 26cm high
 £120-150



1555
MOORCROFT VASE - TOWN OF FLOWERS
 a slender limited edition vase in the Town of Flowers design, No 19 of 25 and designed by K Goodwin. Marked, Moorcroft, Made in England, 19/25, 2009, and signed by Goodwin. 25.5cm high
 £150-200



1556
MOORCROFT TRIAL JUG
 a slender jug in the Cockleshell Orchid design, designed by N Sleeney and dated 27/05/02. Marked, Moorcroft, Made in England. 24cm high
 £100-150



1557
MOORCROFT VASE - MOTHER & BABY
 a bottle shaped limited edition vase in the Mother & Baby design, No 195 and designed by Vicky Lovett. Marked, Moorcroft, 2012, and signed Vicky Lovett. 31cm high
 £150-200



1558
MOORCROFT TRIAL VASE -
TRACTOR

the trial vase in the Tractor design (19cm high), also with another Moorcroft vase in the Festival Pansy design (13.5cm high). (2)

£120-150



1559
MOORCROFT - ANEMONE

the vase in the Anemone design on a yellow ground, 1975 design by Walter Moorcroft. Marked, Moorcroft, WM, Made in England. 19cm high

£80-120



1560
LARGE MOORCROFT VASE -
LIMITED EDITION

a boxed large limited edition vase in the Remember design, designed by Sarah Brummell-Bailey, No 441 of 500 made. Marked, Moorcroft, WM, 2000, 441/500, and signed Sarah BB. 37cm high

£200-250



1561
MOORCROFT LIMITED
EDITION VASE - LOTUS
INDIA

a tapering vase in the Lotus India design, No 46, and with it's original price label to the base. Marked Moorcroft, Made in England. 24cm high

£120-150



1562
MOORCROFT TUDRIC
TAZZA

a tazza in the Pomegranate design, with a pewter hand beaten base. Marked Moorcroft, Made in England, and painted signature, Pewter stamped Tudric Pewter, 01313. 13.5cm high, 18.5cm diameter

£120-150



1563
MOORCROFT FLAMBE
LAMP

in the Columbine design, mounted on an oak base. With a Moorcroft shade. Marked to the base, Moorcroft, Made in Stoke on Trent, England. 42cm to top of light fitting

£120-150



1564
MOORCROFT PLAQUE -
SCOTTISH ROSE

a circular plaque designed by Rachel Bishop, mounted in a wooden frame. Marked, Moorcroft, Made in England. 30.5cm diameter overall

£150-200



1565
MOORCROFT TRIAL VASE -
MUSHROOM

a gourd shaped vase in the Mushroom design, and dated 8/11/10. Marked, Moorcroft, Made in England. 16cm high

£100-150



1566
MOORCROFT FLAMBE BOX

a rectangular box in the Orchid design, designed by William Moorcroft. Marked, Moorcroft, Made in England. 12cm by 8.5cm

£100-150



1567
**MOORCROFT LIMITED
 EDITION VASE**
 a slender vase in the Pink Passion
 design, No 13 of 30 and designed by
 Kerri Goodwin. Marked, Moorcroft,
 Made in England, 2015. 31cm high
 £150-200



1568
MOORCROFT LAMP
 in the Sorrow & Laughter design,
 mounted on a wooden base.
 With a Moorcroft shade. Marked,
 Moorcroft, Made in England.
 28.5cm high overall
 £80-120



1569
**MINTON SECESSIONIST
 VASE - NO 1**
 the vase of slender tapering form,
 with a floral design and with
 colours of turquoise and purple.
 Marked to the base, Minton Ltd,
 No 1. 30cm high
 £100-150



1570
**LARGE BRETBY GARDEN
 FIGURE**
 an unusually large cream glazed
 pottery figure of a lady, with arms
 supported on a fence or stile
 and on a square shaped base.
 Impressed marks, Bretby, 2350
 73cm high
 £50-100



1571
**ERNST WAHLISS AUSTRIAN
 POTTERY BUST - DAPHNE**
 a large Art Nouveau bust of
 Daphne, painted with a green
 dress and wreath and with gilt
 decoration. With a printed mark
 EW Vienna, Made in Austria,
 and impressed numbers 4278,5.
 38.5cm high
 £100-150



1572
**MICHAEL CARDEW
 WINCHCOMBE JUG**
 a large green glazed jug or flagon
 with simple leaf design, with a
 small spout and curved handle.
 Impressed seal marks, MC
 monogram and Winchcombe mark.
 31cm high
 £150-250



1573
**PETER HAYES (B 1946) -
 LARGE RAKU KEYHOLE
 SCULPTURE**
 a red and black burnished and
 textured raku key hole sculpture,
 signed and dated 2001. 34cm high
 *Artists Resale Rights may apply to
 this lot
 £150-250



1574
**PETER HAYES (B 1946) -
 STANDING STONE/TOTEM**
 a large raku standing stone of
 tapering shape with a flattened end,
 mounted on a stone or slate block.
 Signed to the base, Peter Hayes, 95.
 61.5cm high overall
 *Artists Resale Rights may apply to
 this lot.
 £300-500



1575

**RUTHANNE TUDBALL -
LARGE TWO HANDED
DISH**

a large stoneware salt glazed dish, with handles to each side and with a ridged base. With seal marks to base. 43.5cm across, also with a largestudiopottery charger (signed and dated 1999, 50cm dia), two lidded jars and a dish. (5)

£100-200



1576

**WEMYSS POTTERY JUG &
BOWL**

a circular washstand bowl painted with cabbage roses and leaves, and with a green painted rim. Also with a matching washstand jug, both with damages. Bowl 28cm diameter, jug 16cm high. Impressed marks Wemyss, and mark for T Goode & Co. (2)

£60-100



1577

WEMYSS DISH - BEEHIVE

a square shaped dish painted with a beehive and bees, and with a green painted rim. Impressed mark Wemyss, and painted marks Wemyss, T Goode & Co. 18.5cm square

£50-80



1578

**NEWLYN COPPER
CANDLEHOLDER**

the copper candleholder of square shape and designed with two fish, also with another copper candle holder of square shape. Both stamped Newlyn. 20cm and 22cm long. (2)

£60-100



1579

**ART DECO LAMP - ICE
SKATER**

a painted metal figure of an ice skater, mounted on a rectangular plinth and with a green glass shade. Base 23cm long, 17.5cm high

£60-100



1580

**ART NOUVEAU PEWTER
BIRD INKWELL**

probably by Kayserzinn Jugendstil, made in pewter with a red pottery liner, 11cm high. Also with two modern bronze frogs, each with a youngster on their backs. (3)

£100-200



1581

**LIBERTY TUDRIC PEWTER
BOX**

a rectangular pewter box the lid hand beaten with ruskin style roundel, stamped to the base Tudric 078 (21cm by 14cm). Also with a Loetz style glass vase with pierced metal mount, 12cm high. (2)

£60-100

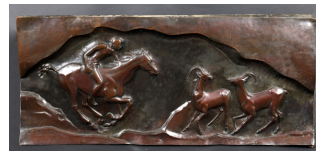


1582

**PAIR OF LIBERTY TUDRIC
CANDLESTICKS**

a pair of pewter hand beaten candlesticks with removable drip pans, with flattened tops and circular bases. Impressed marks, Tudric 0871. 17cm high

£100-150



1583

**'LAURANA' ITALIAN LARGE
COPPER PANEL**

a large mid century copper panel with a raised design with a depiction of a hunter on horseback and two antelopes or gazelles. Stamped Laurana. 131cm across

£100-150



1584

**GEORGE VAN DER
STRAETEN (1856-1941) -
BRONZE & IVORY FIGURE**

a gilt bronze figure of a lady with arms crossed by her body, with a carved ivory face and hands and mounted on an octagonal onyx base. Signed to the base Van Der Straeten, and stamped to the underside of the bronze, Bronze AG Paris. 22cm high

£200-300



1585

**CLARICE CLIFF VASE -
CORAL FIRS**

a slender vase in the Coral Firs design, shape no 566. Painted in bright colours between bands of orange, yellow, and brown. Marked Hand Painted Bizarre by Clarice Cliff, Made in England, 566 M/S. 16cm high

£100-150



1586
WILLIAM NEWTON (B 1959)
- LARGE BRONZE KUDU
 a large limited edition bronze figure of a Kudu, mounted on a rocky base. Signed Newton, 99, 6/9, and with a foundry mark for Morris Singer. With a card certificate from the sculptor. 41cm high
 £200-300



1587
LARGE PAIR OF ROYAL DOULTON VASES
 the vases with a long narrow neck and bulbous body, with green and blue leaf designs against a 'chine' ground. Impressed marks, Royal Doulton, Doulton & Slaters Patent, 3790. 40cm high. (2)
 £100-150



1588
ART NOUVEAU GOLD VESTA
 a gold vesta with a sinuous floral design, with a flower head inset with small rubies and a single sapphire. With a small ruby to open the lid. Stamped marks (rubbed and impossible to read), 4cm by 3.5cm, 25 grams
 £100-150



1589
PAIR OF CONTINENTAL PORCELAIN BOOKENDS
 probably French in the Art Deco style, in the form of two ladies kneeling. Printed marks, C Maux, De Louvier. 16cm high
 £60-100



1590
WMF CENTREPIECE & GLASS DISH
 a large pewter centrepiece the rim with a raised design of grapes and leaves, supported on a hexagonal column and circular base. With a glass dish, stamped mark to base. 29cm high overall
 £100-150



1591
ART NOUVEAU CHROMOLITHOGRAPH - AFTER HENRI PRIVAT LIVEMONT (1861-1936)
 a coloured rectangular chromolithograph titled Ameublement, with a depiction of a lady in the Art Nouveau style. Marked, Privat Livemont del Editeur Bruxelles, mounted in a modern frame. Frame 42cm by 29cm, chromolithograph 25.5cm by 12cm
 £100-150



1592
HUTSCHENREUTHER PORCELAIN SWAN
 a porcelain model of a Swallow in flight over water, 22cm high, and a porcelain model of a jumping horse, 19cm high. Both marked for Hutschenreuther, Germany, and both impressed H Achtziger. (2)
 £60-100



1593
ROYAL COPENHAGEN ICELANDIC FALCON
 a large model of an Icelandic Falcon, Model No 1661 and designed by Peter Herold. 39cm high
 £150-250



1594
ROYAL COPENHAGEN FOX
 Model No 437 Large Barking Fox, designed by Eric Nielson (26.5cm high). Also with Model No 1475 Small Barking Fox (14.5cm high). (2)
 £100-150



1595
ROYAL COPENHAGEN COLLIE
 a model of a Collie lying down, Model No 1701 and designed by Peter Herold. 28cm long
 £60-100



1596
ROYAL DOULTON COCKER SPANIEL WITH PHEASANT
 Model No 1028, also with 1158 Jack Russell with plate, and 1159 Terrier with bone. (3)
 £50-100



1597
HEREND GROUP OF RABBITS
 a porcelain group of two rabbits on a shaped base. Marked, Herend, Hungary, Hand Painted, and with a signature to the base. 14.5cm high
 £50-80



1598
LALIQUE VASE - DRUIDE
 an opalescent and frosted glass vase, with the remains of some blue staining. Model 937 and circa 1924, moulded with mistletoe (chips to rim and base rim). Engraved marks, R Lalique, France, No 937. 17.5cm high
 £150-250



1599
AFTER SERAPHIN VAN DEN HOECK - MODERNIST LAMP
 a black, silver and red painted wooden floor standing lamp, with a black cone shaped shade. 177cm high
 £300-500

1600
STAIN GLASS PANELS
 three matching stain glass panels, each with a circular panel in the centre with a depiction of different large country houses, with surrounding panels with flowers and foliage. Some damages in places, each panel 53cm by 37cm. (3)
 £100-150



1601
MOORCROFT LIDDED BISCUIT BOX
 an early biscuit box painted in the Pomegranate design on a blue ground, the square shaped box with painted green handles to each side and lid. Restoration to lid and chip to handle, painted signature W Moorcroft, and impressed marks Moorcroft, Burslem. 17cm high
 £100-150