



Jewellery & Watches

THURSDAY 14TH OCTOBER AT 10am

Weights and measures are approximate guidelines only

The photographs illustrated and online are not always a true representation of the colour or size of gem stones and prospective buyers are advised to satisfy themselves in this respect.

Coloured stones, including jade, are often treated to enhance their colour or clarity. Prospective buyers should assume all coloured stones may have been treated, unless stated to the contrary in the catalogue description.

Where a lot is accompanied by a gemmological certificate it is important to note that the contents are not guaranteed by Lawrences and should only be treated as additional useful information.



Miranda Bingham
Jewellery Specialist

miranda.bingham@lawrences.co.uk



1000
SOTHEBY'S:
 The Jewels of the Duchess of Windsor, a hardback catalogue of the sale held in Geneva on Thursday 2nd and Friday 3rd April 1987, with price list
 £40-60



1001
 A LARGE QUANTITY OF ASSORTED ANTIQUE JEWELLERY BOXES
 £80-120



1002
 A LARGE QUANTITY OF ASSORTED ANTIQUE JEWELLERY BOXES
 £80-120



1003
 TWENTY ASSORTED ANTIQUE JEWELLERY BOXES
 £60-80



1004
 FIFTEEN ASSORTED JEWELLERY BOXES
 £40-60



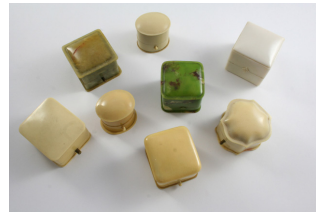
1005
 TWELVE ASSORTED JEWELLERY BOXES
 £60-80



1006
 TWENTY TWO ASSORTED JEWELLERY BOXES
 £120-180



1007
 THIRTY TWO ANTIQUE RING BOXES
 £80-120



1008
 EIGHT ASSORTED ANTIQUE RING BOXES
 £40-60



1009
 THIRTEEN ASSORTED JEWELLERY BOXES
 £60-80



1010
 A QUANTITY OF JEWELLERY IN RED LEATHER JEWELLERY BOX
 including a 22ct gold wedding band, 2.2 grams, a pair of 15ct gold cufflinks and three dress studs, all with foliate engraved decoration, three gold dress studs, two coral necklaces, a set of six turquoise enamel and silver buttons, hallmarked for Birmingham 1900, a carved coral cameo pendant, in silver frame, together with various other items and another leather jewellery box
 £200-300



1011
 A QUANTITY OF JEWELLERY
 including a chalcedony and gold mourning brooch, a gold band ring set with a rose-cut diamond, a gold half hinged bangle, a 9ct gold boar charm, various other items and four jewellery boxes
 £200-300



1012
 A QUANTITY OF JEWELLERY AND COSTUME JEWELLERY
 including a pair of 18ct gold cufflinks, engraved with initials, 11.9 grams, a sapphire and diamond cluster ring, one diamond missing, a turquoise five stone ring, a 9ct gold watchchain, damaged, 16.3 grams, a lady's diamond cocktail wristwatch, a pair of 15ct gold cufflinks, 6.2 grams, two 9ct gold bracelet with padlock clasps, 14.5 grams, a 9ct gold bracelet, 13.1 grams, a ruby and diamond cruciform pendant on a 9ct gold chain, a 9ct gold flat curb link necklace, 4.3 grams, various other items and two jewellery boxes
 £200-300



1013

A QUANTITY OF ASSORTED JEWELLERY

including a lapis lazuli and gold bracelet, a turquoise and gold curb link bracelet, a coral bead necklace, a 9ct gold fox mask brooch, a silver and turquoise bangle, brooch and pendant, a gold bracelet mounted with turquoise matrix, a gold and lapis lazuli signet ring, a gold charm and a gilt metal compass

£200-300



1014

A QUANTITY OF JEWELLERY

including a jade necklace and a jade bracelet, a brooch mounted with an oval-shaped citrine, a paste set double clip brooch, a marcasite and moss agate brooch, a paste set sunburst brooch, a moonstone foliate brooch, and various other items

£200-300



1015

A QUANTITY OF JEWELLERY

including a Victorian gold and black enamel mourning brooch, a gold hinged bangle, mounted with the date 1889 in small pearls, five 9ct gold dress studs, a diamond and red stone foliate brooch, a gold and pearl set buckle brooch and various other items

£250-300



1016

A QUANTITY OF JEWELLERY

including a double row graduated cultured pearl necklace with gold clasp, a gold and garnet ring, a carved and pierced jade pendant and various other items

£200-300



1017

A QUANTITY OF JEWELLERY

including a 9ct gold wedding band, 3.3 grams, a 14ct gold wedding band, 7.5 grams, a black onyx and diamond signet ring, a pair of 9ct gold cufflinks, engraved with initials, 10.2 grams, a pair of 9ct gold cufflinks with engine turned decoration, 6.9 grams, a silver open faced pocket watch and various other items

£200-300



1018

ASSORTED JEWELLERY

including a graduated oval-shaped amber bead necklace, 54cm long, 31 grams, a silver and gem set openwork brooch, an Eastern enamel and silver panel bracelet and a pendant mounted with a gold insect

£200-300



1019

A QUANTITY OF JEWELLERY

including an 18ct gold open faced pocket watch, an 18ct gold and pearl set naval crown brooch, two marcasite navel crown brooches and two pairs of earrings, a 9ct gold Royal Navy sweetheart brooch and a silver and enamel Royal Navy sweetheart brooch, two cultured pearl necklace, an 18ct gold and carved shell cameo pendant, an 18ct gold and carved shell cameo bracelet, and various other items

£300-500



1020

A QUANTITY OF JEWELLERY

including a carved shell cameo brooch in ornate gold mount, a Victorian black enamel and gold mourning brooch, a portrait brooch, a cultured pearl and gold necklace and bracelet and two cultured pearl necklaces etc

£300-500



1021

A QUANTITY OF JEWELLERY

including a 22ct gold wedding band, 6.4 grams, a 14ct gold open faced pocket watch, with metal inner case, a gold wristwatch, a hunting stock pin, two tie pins, a diamond three stone ring, set in platinum, size P 1/2, a lapis lazuli and gold signet ring, and various other items

£300-400



1022

A QUANTITY OF JEWELLERY

including a moonstone spectacle necklace and bracelet, assorted silver brooches, cameos etc

£100-200



1023

A QUANTITY OF JEWELLERY

including a 9ct gold chain necklace, 8.9 grams, a 9ct necklace, damaged, 5.6 grams, a pair of gold hoop earrings, 3.8 grams, and various other items

£100-200



1024

A QUANTITY OF JEWELLERY

including a pair of 9ct gold cufflinks, 9.8 grams, a 15ct gold and pearl foliate necklace, chain missing, a lady's diamond cocktail wristwatch, a Victorian gold and gem set brooch, a French gold bracelet, with eagle's head mark for 18ct gold, damaged, 10.6 grams, a citrine and pearl set oval shaped brooch, a banded agate ring and various other items

£300-500



1025

A QUANTITY OF JEWELLERY

including a gilt metal snake necklace, a Georgian garnet and gold brooch, a Victorian gold, pearl and diamond mourning ring with black enamel decoration, a paste set star brooch, a 9ct gold cruciform pendant, 3.2 grams and various other items

£100-200



1026

A QUANTITY OF JEWELLERY

including a ruby and diamond half hoop ring, set in 18ct yellow gold, a pair of ruby and diamond half hoop earrings, set in 9ct yellow gold, a sapphire and diamond five stone ring, set in 18ct gold, a cultured pearl and diamond ring, a diamond half hoop ring, set in 18ct white gold, an 18ct gold openwork ring and various other gold rings etc

£250-300



1027

A QUANTITY OF JEWELLERY

including a 9ct gold wedding band, 2.4 grams, an 18ct gold wedding band, 1.7 grams, a 9ct gold chain, 7.1 grams, and various other items

£100-200



1028

A QUANTITY OF JEWELLERY

including a 9ct gold, enamel and pearl set openwork foliate pendant, a gold hunting brooch, a gold brooch, mounted with a cabochon sapphire and two small pearls, an 18ct gold pendant mounted with a circular-cut diamond, and various other items

£150-200



1029

A TUTANKHAMUN SCARAB NECKLACE AND CUFF

with enamel decoration, the necklace 11.4cm wide, the cuff 5cm wide

These pieces were designed by the jewellers Thomas Fattorini, Regent Street, Birmingham, to be sold as souvenirs at the Treasures of Tutankhamun exhibition at the British Museum in 1972

£250-300



1030

A QUANTITY OF JEWELLERY

including a carved shell cameo depicting Hebe, the goddess of Youth, a jade bangle, and various other items

£200-300



1031

A QUANTITY OF ASSORTED COSTUME JEWELLERY

£200-300



1032

A QUANTITY OF JEWELLERY

including a carved shell cameo brooch in marcasite frame, a citrine and gold brooch, a 22ct gold ring set with turquoise stones, a gold and enamel locket pendant etc

£150-200



1033

A CORAL AND GOLD BROOCH

mounted with an oval section of foliate carved coral in 9ct gold, 9cm long, together with a pair of carved coral stud earrings etc., and an Edwardian peridot, pearl and gold openwork pendant, 3.5cm long

£100-150



1034

A QUANTITY OF JEWELLERY

including a coral bead necklace, a pair of banded agate and gold drop earrings, a 9ct gold and pearl set double heart brooch, a 15ct gold ring mounted with two rose-cut diamonds and three sapphires, size O 1/2, an opal and diamond cluster ring, set in gold, size P 1/2, a peridot ring set in gold, size O 1/2 and a citrine and pearl cluster brooch, set in gold

£150-200



1035

A QUANTITY OF JEWELLERY

including an opal and gold butterfly brooch, a green paste and pearl set brooch, a gold fox mask stick pin, a diamond and gold hippo brooch and two other items

£250-300



1036

A GARNET AND GOLD CLUSTER PENDANT

on a 9ct gold neckchain, together with another garnet and gold pendant, a garnet cruciform pendant, a pair of garnet and gold drop earrings, a pair of garnet and gold cluster stud earrings and three garnet and gold rings, total weight of all the items 27.2 grams

£300-400



1037

A GEORGIAN GARNET AND GOLD BROOCH

mounted with two foil backed garnets in gold closed back setting, 2.5cm long, a gold mourning ring, dated for 1892, and a gold pill box, 21 grams

£150-200



1038

A ZIRCON AND PEARL SET BROOCH

the circular-cut zircon is mounted with two small pearls, in yellow gold, 6cm long, together with a pearl set open crescent brooch, set in yellow gold, 5cm long, a green garnet and pearl set star pendant, set in yellow gold, 2.5cm wide together with five assorted gold and gem set brooches

£300-400



1039

A 9CT GOLD AND CORAL NECKLET

37.5cm long, 6.0 grams, together with a conforming bracelet, 18.5cm long, 2.8 grams and a jade and baroque pearl necklet, 42cm long

£200-300



1040

A CITRINE, PEARL AND GOLD BANGLE

the circular-cut citrine is set within a surround of small pearls, together with an amethyst and gold brooch, 2.5cm wide and a Georgian foil backed amethyst set within a surround of pearls in gold closed back setting, 2.5cm wide

£200-300



1041

A CITRINE AND CULTURED PEARL NECKLACE

mounted with circular-cut citrines and cultured pearls, in 9ct yellow gold, 47cm long, together with a citrine and cultured pearl bracelet, set in 9ct yellow gold, 20cm long and a pair of citrine and cultured pearl drop earrings, set in 9ct yellow gold, with screw fittings

£400-500



1042

A GOLD AND GEM SET BIRD BROOCH

mounted with two emeralds and suspending an untested pearl drop, 3cm long, together with a ruby and white paste circle brooch, set in gold, 2.3cm wide and a paste set pendant, 3cm long

£300-400



1043

AN AMETHYST AND DIAMOND PENDANT

the pear-shaped amethyst is set with a circular-cut diamond in gold, on a 9ct gold neckchain, together with an amethyst and gold pendant, on a 9ct gold neckchain, together with a pair of amethyst and gold stud earrings, and an amethyst and 9ct gold single stone ring, size K, total weight of all the items 8.6 grams

£250-300



1044

A SCOTTISH HARDSTONE AND SILVER BROOCH

6cm wide, together with a pair of Scottish hardstone and silver drop earrings, 4.5cm long

£200-300



1045

A SINGLE ROW UNIFORM JADE BEAD NECKLACE

the jade beads measure approximately 8.2mm, 72cm long

£200-300



1046

A THREE ROW UNIFORM CORAL BEAD BRACELET

the coral beads are set to a gold rectangular-shaped clasp, mounted with three coral beads, 17.5cm long

£200-300



1047

A CARVED CORAL NECKLET

of foliate design, backed in gold, 40cm long

£150-200



1048

A VICTORIAN CASED SET OF SEED PEARL AND AMETHYST JEWELLERY

comprising a necklace, 38cm long, a brooch and two hair pieces, all set with graduated pearls and foil backed amethysts, with some damages

£400-500



1049

A VICTORIAN CASED SET OF SEED PEARL JEWELLERY

comprising a necklace, a pair of drop earrings, an anchor brooch, a star brooch, a long foliate brooch and a bow brooch, all with some damage

£200-400



1050

THIRTEEN ASSORTED GOLD AND GEM SET RINGS

total weight 26.2 grams

£200-300



1051

A SAPPHIRE AND DIAMOND FIVE STONE RING

set in 9ct gold, together with a 9ct gold wedding band, 3.4 grams, a bloodstone and 9ct gold signet ring, an opal and 9ct gold single stone ring, and three other rings

£150-200



1052

A SAPPHIRE AND DIAMOND RING

set with three circular-cut sapphires and four single-cut diamonds in 18ct yellow gold, size J, together with a diamond five stone ring, set in 18ct gold, size L 1/2, a ruby and rose-cut diamond ring, set in 18ct gold, size K, an amethyst three stone ring, set in 14ct gold, size H and an 18ct gold foliate engraved band ring, size I, 8.2 grams

£250-350



1053

A DIAMOND RING

set with baguette-cut and circular-cut diamonds, in yellow gold, size N, together with a citrine single stone ring, set in yellow gold, size R, a sapphire and diamond ring, set in 18ct gold, size M 1/2, and a jade and gold ring, size O

£250-300



1054

A RUBY AND DIAMOND FIVE STONE RING

the three circular-cut rubies are set with two circular-cut diamonds, in 18ct gold, size N, together with a diamond cross-over ring, set in 18ct gold, size N, a gold gypsy ring set with three diamonds, size P and a half pearl cross-over ring, set in 18ct gold, size K

£250-300



1055

A SAPPHIRE AND DIAMOND HALF HOOP RING

set in 9ct gold, size L, together with a gold and diamond gypsy ring, size N 1/2 and another ring

£200-300



1056

A RUBY AND DIAMOND RING

the oval-shaped rubies are set with four circular-cut diamonds in 18ct yellow gold, size Q, together with a diamond three stone ring, set in gold, size O 1/2 and a citrine and 9ct gold single stone ring, size O

£200-250



1057

A RUBY AND DIAMOND CLUSTER RING

mounted with circular-cut rubies and diamonds in gold, size M, together with a diamond cluster ring, set in gold, size N and another diamond and gem set ring, size M 1/2

£200-300



1058

FOUR 22CT GOLD WEDDING BANDS

17.7 grams

£300-400



1059

A 9CT GOLD SIGNET RING

engraved with initials, 7.5 grams, size W, together with two 22ct gold wedding bands, 8.4 grams

£250-300



1060

A BLACK ONYX AND 9CT GOLD SIGNET RING

5.3 grams, size O and an 18ct gold wedding band, 5.6 grams, size Q 1/2

£120-180



1061

**A MASONIC 9CT GOLD
SIGNET RING**

hallmarked for Birmingham 1916, 5.0
grams. Size Q
£120-180



1065

**A 9CT GOLD CIRCULAR-
SHAPED LOCKET PENDANT**

with engraved foliate decoration to
one side, 3.2cm dia., on a fancy link
gold chain, total weight 22.1 grams
£200-300



1069

**A 9CT GOLD FANCY GATE
LINK BRACELET**

suspending a heart-shaped
blue enamel charm with gold
decoration, 16.5cm long, 27.5 grams
£200-300



1073

A GOLD CHAIN NECKLACE

formed with circular links to a bolt
ring clasp, 73cm long, 28.3 grams
£250-300



1062

**A 9CT GOLD FANCY LINK
BRACELET**

18.5cm long, 7.2 grams, together
with a gold sovereign, worn and
moulded into a ring, 8.3 grams
£150-200



1066

**A 9CT GOLD V-SHAPED
FANCY LINK NECKLACE**

with concealed clasp, 42.5cm long,
30 grams
£250-300



1070

**A 15CT GOLD DOUBLE
ROW CURB LINK BRACELET**

each link stamped 15ct 625, with 9ct
gold padlock clasp, 17.5cm long, total
weight 36.5 grams
£300-400



1074

A 9CT GOLD NECKLACE

40cm long, 16 grams, together with
a conforming bracelet, 18cm long,
11.5 grams
£250-300



1063

**A 9CT GOLD OVAL LINK
WATCH CHAIN**

each link stamped 9 375, 75cm long,
42.2 grams
£350-400



1067

**AN 18CT GOLD OVAL LINK
NECKLACE**

76cm long, 82 grams
£1800-2200



1071

**A 9CT GOLD FANCY LINK
NECKLACE**

41.5cm long, 17.8 grams
£150-200



1075

**A 9CT GOLD CURB LINK
WATCH CHAIN**

each link stamped 9 375,
suspending a 9ct gold 't' bar and
a gold sovereign, total weight 54
grams
£450-500



1064

**A 9CT GOLD CURB LINK
WATCH CHAIN**

each link stamped 375, 53cm long,
84.6 grams
£700-800



1068

**A 9CT GOLD OVAL LINK
WATCH CHAIN**

43cm long, 40 grams
£350-400



1072

A 9CT GOLD NECKLACE

formed with flattened oval links,
62.5cm long, together with a
conforming bracelet, 19.5cm long,
total weight 23.7 grams
£200-300



1076

**A 9CT GOLD CURB LINK
WATCH CHAIN**

43cm long, 42.4 grams, with 18ct
gold clasp, 3.2 grams
£360-400



1077

**AN 18CT GOLD CURB LINK
WATCH CHAIN**

suspending an 18ct gold 't' bar and
and an attached George III guinea,
39cm long, total weight 37 grams
£800-1000



1078

**A 14CT GOLD FANCY LINK
NECKLACE**

50cm long, 20.6 grams, together
with a 21ct gold pendant, 3.6grams,
another pendant, 2.8 grams and
a gold curb link bracelet, 18.5cm.,
14.0 grams
£400-500



1079

**A 9CT GOLD
RECTANGULAR FOLIATE
ENGRAVED LOCKET
PENDANT**

on a 9ct gold flat curb link chain,
together with a 9ct gold fancy link
necklace, 40cm long, a 9ct gold
chain suspending a cultured pearl
and gold pendant, and a 9ct gold
openwork pendant, total weight
30.3 grams
£250-300



1080

**A 9CT GOLD LONG CURB
LINK NECKLACE**

60cm. long, together with a 9ct gold
bracelet and a 9ct gold car pendant
and chain, total weight of all the
items 33.5 grams
£300-400



1081

**A 9CT GOLD CURB LINK
WATCH CHAIN**

55.5cm long, 56.5 grams, together
with a 9ct gold chain, 46cm long,
4.7 grams
£400-500



1082

AN 18CT GOLD NECKLET

formed with long engraved links
and conjoining spherical links,
41cm long, 19.0grams, together with
an 18ct gold fancy link bracelet,
with concealed clasp, 18cm long, 8.1
grams and a 14ct gold oval pierced
link necklace, 50cm long, 6.6 grams
£500-600



1083

**A PAIR OF 18CT GOLD
STUD EARRINGS**

1.3 grams, together with three pairs
of 9ct gold stud earrings, 4.4 grams
£200-300



1084

**A PAIR OF 18CT GOLD
OVAL SHAPED EARRINGS**

12.3 grams, together with a pair of
gold openwork hoop earrings, 3.8
grams
£250-300



1085

**A DIAMOND, RUBY AND
GOLD BRACELET**

the lioness' head set with circular
rubies and diamonds to a gold
bracelet, 20cm long, 9.7 grams.
Damaged
£250-300



1086

**AN 18CT GOLD FLAT CURB
LINK NECKLACE**

formed with long and short links,
50cm long, 44.7 grams
£600-800



1087

**AN 18CT GOLD FANCY
LINK BRACELET**

formed with rectangular-shaped
links, with concealed clasp,
19.5cm long, 31.2 grams
£400-600



1088

**A 9CT GOLD FANCY LINK
NECKLACE**

39.5cm long, 21.4 grams
£200-300



1089

**AN 18CT GOLD ROPE LINK
CHAIN**

46cm long, 27.9 grams
£500-600



1090

A GOLD SOVEREIGN

1887
£250-300



1091
A GOLD HALF SOVEREIGN
1912
£250-300



1092
A GOLD SOVEREIGN
1888
£250-300



1093
A GOLD SOVEREIGN
1904 and a gold half sovereign,
1911, both with B.P. mint marks,
with silver sovereign case
£200-300



1094
A GOLD SOVEREIGN
1967
£200-250



1095
A GOLD HALF SOVEREIGN
1898, in a 9ct gold pendant mount
and on a 9ct gold circular link chain,
total weight 8.8 grams
£100-150



1096
A GOLD HALF SOVEREIGN
1982, in a 9ct gold pendant mount,
total weight 7.2 grams
£80-150



1097
A GOLD SOVEREIGN
1911, in a 9ct gold pendant mount,
on a 9ct gold fancy link chain, total
weight 30.8 grams
£300-400



1098
A GOLD COMMEMORATIVE
MEDALLION
inscribed to one side William and
Ann Hobson married 15 July 1779,
to the other side To Georgina by
her parents in commemoration of
the fiftieth anniversary of the happy
marriage 15 July 1829, 40.5 grams
£800-1000



1099
A SILVER BALLPOINT PEN
BY MUST DE CARTIER
with engine turned decoration,
signed Cartier, Paris, 14cm long.
With fitted red leather case by
Must de Cartier
£100-150



1100
A 9CT GOLD SPINNING
FOB
mounted to one side with a circular
bloodstone, a circular carnelian
to the other, 2.5cm wide, together
with a carnelian fob engraved with
a classical warrior, 2.1cm wide
£100-150



1101
A 9CT GOLD SPINNING
FOB
mounted with a bloodstone and
carnelian, together with another
gold, bloodstone and carnelian
spinning fob and a gold and black
onyx spinning fob
£40-60



1102
A PAIR OF 9CT GOLD
CUFFLINKS
of oval shape, one link engraved
with initials, the other with engine
turned decoration, 10.8 grams,
a gold standing dog brooch, 8.4
grams, a 9ct gold tie pin, 1.8 grams,
and another pair of cufflinks
£150-200



1103
A SET OF SIX SILVER AND
MAUVE ENAMEL DRESS
BUTTONS
hallmarked for Birmingham 1909
£100-150



1104
A PAIR OF 18CT GOLD AND
BLUE ENAMEL ROYAL NAVY
CUFFLINKS AND DRESS
STUDS
each link depicting an anchor
below a crown, comprising a pair of
cufflinks and three dress studs, total
weight 22.3 grams
£300-400



1105

A PAIR OF SAPPHIRE AND DIAMOND DRESS STUDS

each set with calibre-cut sapphires and rose-cut diamonds, in 18ct white gold, together with a cased set of four crystal and sapphire dress studs

£200-300



1108

A PAIR OF MOTHER OF PEARL AND 15CT GOLD CUFFLINKS

each formed with a circular mother of pearl link centred with a sapphire cabochon within a blue enamel border and an oval-shaped gold link engraved with initials, 7.4 grams

£150-200



1111

AN 18CT GOLD TRAVEL CLOCK BY DUNHILL

the signed gold coloured dial with Roman numerals, the case with granulated two colour gold decoration, Swiss quartz movement, 3.5 x 5cm., 68 grams

£1200-1500



1114

A DIAMOND AND ENAMEL REGIMENTAL BROOCH FOR THE ROYAL ARTILLERY

mounted with rose-cut diamonds and with blue and red enamel decoration, in gold, 4.5cm wide

£300-400



1106

A PAIR OF 18CT GOLD CUFFLINKS

of oval plain form, together with another pair of 18ct gold cufflinks, formed with torpedo shaped links, total weight 13.8 grams

£250-300



1109

A PAIR OF ENAMEL AND GOLD CUFFLINKS

depicting the coat of arms for HRH Prince Philip, The Duke of Edinburgh, maker's mark H.H.P., 13.3 grams. In fitted case by Plante, 12 Bury Street, London S.W.

£250-300



1112

A 9CT GOLD AND ENAMEL BROOCH FOR THE ROYAL BRITISH LEGION

with blue enamel decoration, 3cm long, together with a 9ct gold and blue enamel badge for the British Legion, 2cm wide

£100-150



1115

A GEORGIAN DIAMOND AND BLUE ENAMEL BROOCH

the blue enamel centre with embossed diamond set initial decoration, set within a border of rose-cut diamonds, with diamond set bow surmount, gold closed back setting, 5 x 3cm.

Possibly for the 30th Light Dragoon Regiment

£500-700



1107

A PAIR OF 18CT GOLD AND ENAMEL CUFFLINKS

of oval form, each link with white enamel and gold striped decoration with a blue enamel border, 9.8 grams

£200-300



1110

A 9CT GOLD 'WAFER' LIGHTER BY ASPREY & CO.

with engine turned decoration to both sides, with maker's mark A & Co. Ltd., hallmarked for London 1964, 5.5 x 3.8cm, 49.8 grams

£1000-1500



1113

A DIAMOND AND ENAMEL REGIMENTAL BROOCH FOR THE GREEN HOWARDS

mounted with single-cut diamonds and cabochon rubies and emeralds, with green and red enamel decoration, in gold, 2.5cm long

£200-300



1116

A VICTORIAN DIAMOND DOUBLE HORSESHOE BROOCH

mounted with old-cut diamonds, in silver and backed in gold, 3.5cm wide

£150-200



1117

A VICTORIAN DIAMOND GROUSE BROOCH

set overall with circular-cut diamonds in silver and gold, with red enamel crest, 3cm wide

£2200-2800



1118

A DIAMOND AND ENAMEL STANDING HORSE AND JOCKEY BROOCH

set overall with circular-cut diamonds, the jockey with green, yellow, white and black enamel decoration, in 18ct white gold, maker's mark A & W for Alabaster & Wilson, circa 1970, 3cm wide

£2200-2800



1119

A BLACK ENAMEL TRAVELLING CLOCK BY MOVADO

the black square shaped dial with dagger numerals, on a gold chain suspending a monocle, together with three assorted seals and a pair of 18ct gold cufflinks, engraved with initials, the cufflinks 6.4 grams

£300-400



1120

A GOLD PLATED HAPPY DAY ALARM DESK CLOCK BY CHOPARD

the signed white dial with Roman quarters, numbered to the reverse 51/6137-21 943670, 7.8cm dia.

£100-150



1121

AN 18CT GOLD HALF HUNTING CASED POCKET WATCH BY J.W. BENSON, LONDON

the signed white enamel dial with Roman numerals and subsidiary seconds dial, with blue enamel chapter ring, with engraved foliate decoration to both cases, also engraved with initials to the back case, 37mm dia., 57 grams

£200-300



1122

AN 18CT GOLD OPEN FACED POCKET WATCH

the gold foliate engraved dial with Roman numerals, metal cuvette, with foliate engraved and cartouche decoration to the back case, 38mm dia., 50 grams

£200-250



1123

A 9CT GOLD HALF HUNTING CASED POCKET WATCH

the white enamel dial with Roman numerals and subsidiary seconds dial, 50mm dia., 86.6 grams

£520-600



1124

AN 18CT GOLD OPEN FACED POCKET WATCH

the granulated dial with Arabic numerals and subsidiary seconds dial, 45mm dia., 52.6 grams

£150-200



1125

AN 18CT GOLD FULL HUNTING CASED POCKET WATCH BY A. LANGE & SOHNE, DRESDEN

the signed white enamel dial with Arabic numerals and subsidiary seconds dial, signed three quarter plate movement, engraved with initials to the front case, 40mm dia., 48.5 grams.

With wooden stand

£300-400



1126

AN 18CT GOLD FULL HUNTING CASED POCKET WATCH

the gold coloured dial with Roman numerals, the movement signed James Gorham, Kennington, watch maker to the Royal Family, 45mm dia., 103 grams

£500-700



1127

AN 18CT GOLD OPEN FACED POCKET WATCH BY BARRAUDS, LONDON

the signed white enamel dial with Roman numerals and subsidiary seconds dial, 50mm dia., 118 grams

£600-800



1128

A LADY'S 9CT GOLD WRISTWATCH BY ROTARY

the signed oval-shaped dial with baton numerals, on a 9ct gold gate link bracelet by Rotary, 16.5cm long, 18.0 grams. With box by Rotary

£200-250



1129
A LADY'S 9CT GOLD WRISTWATCH BY ROTARY
 the signed circular dial with baton numerals, on a 9ct gold bracelet by Rotary, 17.0 grams.
 With box and outer box by Rotary
 £80-120



1132
A LADY'S GOLD WRISTWATCH BY BAUME & MERCIER
 with signed black dial, numbered to the back case 819318 36662, on a tan leather strap, 2.3mm dia
 £200-300



1135
A LADY'S SILVER GILT WRISTWATCH BY MUST DE CARTIER
 the signed circular dial with Roman quarters, quartz movement, 30mm dia., on a brown leather strap
 £300-400



1138
A LADY'S DIAMOND AND PLATINUM COCKTAIL WRISTWATCH BY TIFFANY & CO
 the tonneau-shaped dial with Arabic numerals, with rose-cut diamonds set to the bezel and mount, signed Tiffany & Co., Paris to the back case, with French marks to the side and inner case, strap missing, 25mm wide
 £400-500



1130
A LADY'S GOLD WRISTWATCH
 the white enamel dial with Arabic numerals, with outer enamel chapter ring, on a gold expanding bracelet, together with another lady's gold wristwatch, the white enamel dial with black Arabic numerals and one red numeral at 12 o'clock, on a gold expanding bracelet
 £300-400



1133
A LADY'S 9CT GOLD WRISTWATCH BY BENSON, LONDON
 the signed circular dial with Arabic numerals, on a 9ct gold snake link bracelet, 14.6 grams
 £80-120



1136
A LADY'S DIAMOND AND PLATINUM WRISTWATCH
 the rectangular-shaped dial with Arabic numerals, with baguette-cut and single-cut diamonds set to the bezel, with further single-cut diamonds set to the ornate platinum bracelet, 15.5cm long
 £350-400



1139
AN 18CT GOLD OYSTER WRISTWATCH BY ROLEX
 the circular dial signed Robinson & Co. Ltd., Singapore, with Arabic numerals and subsidiary seconds dial, signed Rolex to the inner case, 30mm dia., together with a 9ct gold wristwatch, the inner case and movements signed Rolex, 26mm dia., on a gold expanding bracelet
 £150-200



1131
A 9CT GOLD WRISTWATCH
 the white enamel dial with black Arabic numerals and one red numeral at 12 o'clock, on a gold expanding bracelet, 18.6 grams
 £100-150



1134
A LADY'S 9CT GOLD WRISTWATCH BY OMEGA
 the signed circular dial with baton numerals, on an integrated 9ct gold textured bracelet, 16cm long, 25.9 grams
 £80-120



1137
A LADY'S DIAMOND COCKTAIL WRISTWATCH
 the rectangular-shaped dial with Arabic numerals, with circular-cut diamonds set to the bezel, on a black suede strap
 £150-200



1140
A GENTLEMAN'S STAINLESS STEEL AUTOMATIC SEAMASTER WRISTWATCH BY OMEGA
 the signed circular dial with baton numerals, on a tan leather strap, 35mm dia
 £150-200



1141

A GENTLEMAN'S GOLD AUTOMATIC WRISTWATCH BY GARRARD

the signed circular dial with baton numerals and Arabic numeral at 12 o'clock, date aperture, with presentation inscription to the back case, on a black leather strap by Garrard.

With red leather case and outer box by Garrard & Co Ltd

£200-300



1142

A GENTLEMAN'S STAINLESS STEEL AND GOLD WRISTWATCH BY OMEGA

the signed black circular dial with baton numerals, on a black leather strap, 35mm dia., with Omega box and paperwork

£150-200



1143

A GENTLEMAN'S STAINLESS STEEL WRISTWATCH BY JAEGER-LECOULTRE

the signed circular dial with Arabic quarters and dagger numerals, 30mm dia., on an unrelated bracelet

£300-400



1144

A GENTLEMAN'S GOLD KINGMATIC WRISTWATCH BY MOVADO

the signed circular dial with dagger quarters and baton numerals, on a black leather strap, 32mm dia

£100-150



1145

A GENTLEMAN'S STAINLESS STEEL ELECTRONIC SEAMASTER CHRONOMETER WRISTWATCH BY OMEGA

the signed grey dial with baton numerals and date aperture, on an Omega stainless steel bracelet, 38mm dia

£150-250



1146

A GOLD WRISTWATCH BY OMEGA

the signed circular dial with Arabic and dot numerals, on a black leather strap, 32mm dia.

£150-200



1147

A GOLD WRISTWATCH BY J.W. BENSON, LONDON

the signed tonneau-shaped dial with Arabic numerals and subsidiary seconds dial, on a tan leather strap

£150-200



1148

A GENTLEMAN'S SWISS 18CT GOLD CHRONOGRAPH WRISTWATCH

the gold coloured dial with four Arabic numerals, seconds and quarter seconds dials, on a black leather strap, 38mm dia

£700-900



1149

A GENTLEMAN'S STAINLESS STEEL AND GOLD OYSTER PERPETUAL DATEJUST WRISTWATCH BY ROLEX

the signed white dial with Roman numerals, on a Rolex bracelet with deployant clasp, serial number W577167, model number 16233, 35mm dia.

With Rolex guarantee, green leather box and outer box

£2500-3000



1150

A PRIVATE COLLECTION OF FOB SEALS

LOTS 1150-1161

A 19TH CENTURY 18CT GOLD FOB SEAL

the body of intricate scrolling form, the amethyst matrix engraved with a crest and the motto Velle Bene Facere (to wish to do well), 3cm high

£250-300



1151

A 19TH CENTURY GOLD SEAL

with foliate scrolling body, the carnelian matrix engraved with a hound, 2.5cm high, together with another gold seal, the carnelian matrix engraved with a crest, 4cm high

£200-300



1152

A 19TH CENTURY GOLD SEAL

the body with foliate scrolling decoration, the carnelian matrix engraved with the heads of two classical figures in profile, 3cm high, and another gold seal, the citrine matrix engraved with a coat of arms, 3.5cm high

£250-300



1153
THREE ASSORTED GOLD SEALS

one with carnelian matrix engraved with initials, 3cm high, one with vacant amethyst matrix, 2.5cm high and one with a carnelian matrix engraved with a dog, 3cm high
£200-300



1154
FOUR ASSORTED GOLD SEALS

one with a bloodstone matrix engraved with a greyhound with initials below, 2.5cm high, one formed as two birds standing on a foliate mound, with bloodstone matrix engraved 'Amitie', 3.5cm high, one with chalcedony matrix engraved with a falcon with initials below, 3.3cm high, and one with chalcedony matrix engraved with initials, 3.2cm high
£400-600



1155
THREE ASSORTED GOLD SEALS

one with carnelian matrix engraved with a coat of arms, 3.7cm high, one with a vacant carnelian matrix, 4cm high and one with a chalcedony matrix engraved with initials and motto, 2.5cm high
£250-300



1156
FIVE ASSORTED GOLD SEALS

three with carnelian matrices, one engraved with initials, 3cm high one with a crest, 2.5cm high and one with a cross, 3.2cm high, one with vacant bloodstone matrix, 3cm high and one with citrine matrix, 2.8cm high
£400-600



1157
SIX ASSORTED GOLD SEALS



1158
FIVE ASSORTED GOLD SEALS

one with a swivel carnelian engraved with a coat of arms, 4.5cm high, one with a black onyx matrix engraved with the profile of a classical warrior, 3cm high and three other seals
£300-500



1159
FOUR ASSORTED GOLD SEALS

one with a carnelian matrix engraved with a coat of arms, 3.5cm high, one with a carnelian matrix engraved with a crest, 4cm high, one formed as a prancing horse with vacant bloodstone matrix, 2.5cm high, one with an amethyst matrix engraved with a crest, 4cm high
£400-600



1160
FOUR ASSORTED GOLD SEALS

one with a citrine matrix engraved with a crest, 4cm high, one with an agate matrix engraved with a crest, 3.5cm high, one with a carnelian matrix engraved with a crest, 3.5cm high and one with a carnelian matrix engraved with the head and shoulders of a classical warrior, 3.5cm high
£400-600



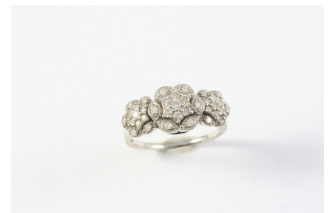
1161
FIVE ASSORTED SEALS

including one formed as a snake with citrine matrix engraved with initials, 3cm high, a gold spinning fob mounted with bloodstone and carnelian, and three other gold or gold filled seals
£300-400



1162
A SAPPHIRE AND DIAMOND CLUSTER RING

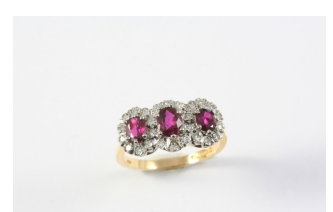
the oval-shaped sapphire is set within a surround of circular-cut diamonds in yellow gold. Size O
£250-300



1163
A DIAMOND TRIPLE CLUSTER RING



1164
A DIAMOND COCKTAIL RING



1165
A RUBY AND DIAMOND TRIPLE CLUSTER RING

the three oval-shaped rubies are each set within a surround of circular-cut diamonds, in 18ct gold. Size Q 1/2
£500-700



1166

A RUBY AND DIAMOND CLUSTER RING

the oval-shaped ruby is set within a surround of circular-cut diamonds, in 18ct gold. Size S

£400-600

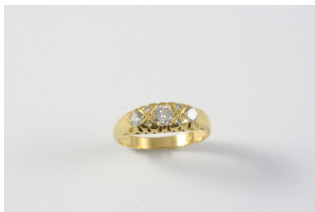


1167

AN AQUAMARINE AND DIAMOND CLUSTER RING

the square-shaped aquamarine is set within a surround of two baguette-cut and fourteen circular-cut diamonds in platinum. Size N

£500-600



1168

A DIAMOND THREE STONE RING

the three graduated circular-cut diamonds are set with circular diamond highlights in 18ct gold. Size M 1/2

£80-120



1169

A DIAMOND PLAQUE RING

mounted with nine circular-cut diamonds, in 18ct white gold. Size N 1/2

£80-120



1170

A YELLOW SAPPHIRE AND DIAMOND CLUSTER RING

the oval-shaped yellow sapphire is set within a surround of circular-cut diamonds, in 18ct gold. Size M

£650-850



1171

AN EMERALD AND DIAMOND CLUSTER RING

the oval-shaped emerald is set within a surround of four collet set diamonds and circular-cut diamonds, with further diamonds set to the shoulders, in platinum. Size L 1/2

£600-700



1172

AN EMERALD AND DIAMOND MARQUISE-SHAPED RING

the marquise-shaped emerald is set within a surround of circular-cut diamonds, in yellow gold. Size P

£200-250



1173

A GARNET AND DIAMOND PEAR-SHAPED CLUSTER RING

the pear-shaped cabochon garnet is set within a surround of circular-cut diamonds, in gold. Size L

£300-400



1174

A SAPPHIRE AND DIAMOND FIVE STONE RING

the three circular-cut sapphires are set with two circular-cut diamonds, in 18ct gold. Size P

£250-300

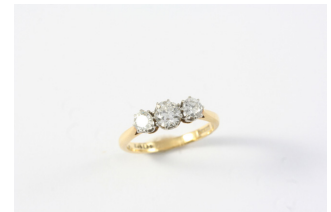


1175

A DIAMOND CLUSTER RING

centred with a circular old-cut diamond within a double surround of millegrain set old-cut and rose-cut diamonds, in gold. Size L

£600-800



1176

A DIAMOND THREE STONE RING

the three graduated circular-cut diamonds are set in yellow gold. Size K

£250-300



1177

A SAPPHIRE AND DIAMOND CLUSTER RING

the oval-shaped sapphire is set within a surround of circular-cut diamonds, in 18ct gold. Size N

£250-300



1178

A SAPPHIRE AND DIAMOND RING

the three graduated oval-shaped sapphires are set with four cushion-shaped diamonds in yellow gold. Size L

£300-500



1182

A DIAMOND THREE STONE RING

set with three circular-cut diamonds in 18ct white gold and platinum. Size L 1/2

£200-250



1186

A TOPAZ SINGLE STONE RING

the oval-shaped topaz is set in 18ct gold. Size M

£700-800



1189

A DIAMOND HALF HOOP RING

mounted with six circular-cut diamonds, in yellow gold, shank misshapen

£200-300



1179

A RUBY AND DIAMOND RING

set with a row of calibre-cut rubies within a border of circular-cut diamonds, in white gold. Size P

£300-400



1183

A SAPPHIRE AND DIAMOND CLUSTER RING

the circular-cut sapphire is set within a surround of ten circular-cut diamonds, in 18ct yellow gold.

Size P

£200-300

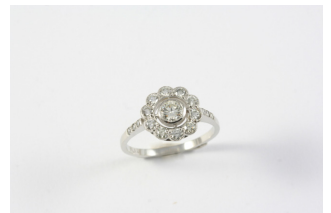


1187

A SAPPHIRE AND DIAMOND CLUSTER RING

the oval-shaped sapphire is set within a surround of twelve brilliant-cut diamonds, in 18ct gold. Size L

£800-1000

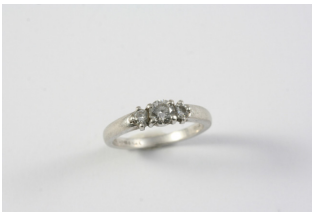


1190

A DIAMOND CLUSTER RING

the collet set circular-cut diamond is set within a surround of circular-cut diamonds, in platinum. Size N

£650-750



1180

A DIAMOND THREE STONE RING

set with three graduated circular-cut diamonds in platinum. Size L

£250-300

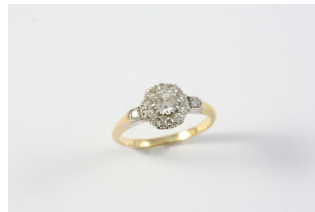


1184

AN OPAL AND GOLD RING

the oval-shaped solid white opal is set in 22ct gold. Size V

£400-500

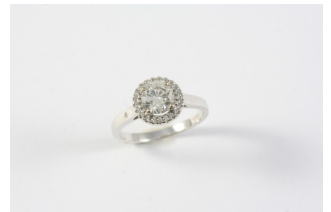


1188

A DIAMOND CLUSTER RING

the circular-cut diamond is set within a surround of further circular-cut diamonds, with a diamond set to each shoulder, in yellow gold. Size M

£600-800



1191

A DIAMOND CLUSTER RING

the circular-cut diamond is set within a surround of circular-cut diamonds in 18ct white gold. Size M

£200-300



1181

AN EMERALD AND DIAMOND CLUSTER RING

the square-shaped emerald is set within a surround of circular-cut diamonds. Size L 1/2

£250-300



1185

AN AMETHYST AND DIAMOND CLUSTER RING

the oval-shaped amethyst is set within a surround of circular-cut diamonds, in 14ct white gold. Size M

£600-700



1192

A RUBY, SAPPHIRE AND DIAMOND SWIVEL ETERNITY RING

millegrain set with circular-cut diamonds and with calibre-cut sapphires and rubies. Size M 1/2

£400-500



1195

A SAPPHIRE AND DIAMOND CLUSTER RING

the oval-shaped sapphire is set within a surround of circular-cut diamonds, in 18ct yellow gold. Size M

£400-600



1198

A DIAMOND RING

mounted with two collet set circular-cut diamonds within a surround of circular-cut diamonds, in yellow gold, size P, together with a diamond ring, the five square shaped diamonds are set within a border of circular-cut diamonds, in 18ct gold, size P 1/2

£200-300



1201

AN AMETHYST AND DIAMOND CLUSTER RING

the oval-shaped amethyst is set within a surround of circular-cut diamonds, in 18ct gold, size O 1/2, together with an blue topaz and diamond ring, set in 9ct gold, size O, a hardstone carved cameo and rose-cut diamond ring, set in 18ct gold, size O 1/2 and an opal and gold three stone ring, size P

£150-200



1193

A DIAMOND FIVE STONE RING

the five graduated circular-cut diamonds are collet set in platinum. Size N

£900-1200



1196

A DIAMOND CLUSTER RING

the circular-cut diamond is set within a surround of eight smaller circular-cut diamonds, in 18ct white gold. Size L 1/2

£100-150



1199

A RUBY AND DIAMOND FIVE STONE RING

the three circular-cut rubies are set with two circular-cut diamonds, in 18ct gold and platinum, size P, together with a ruby and diamond ring, the three rubies are set with a circular-cut diamond in 18ct white gold, size P

£250-300

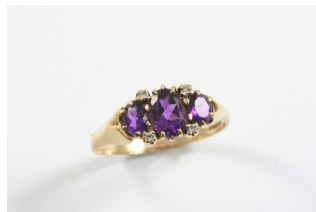


1194

A SAPPHIRE AND DIAMOND CLUSTER RING

the oval-shaped sapphire is set within a surround of circular-cut diamonds, in 18ct yellow gold and platinum. Size N 1/2

£1000-1200



1197

AN AMETHYST AND DIAMOND RING

the three graduated oval-shaped amethysts are set with four circular-cut diamonds, in yellow gold. Size Z 1/2

£150-200



1200

A DIAMOND THREE STONE RING

the three graduated circular-cut diamonds are set in platinum and yellow gold, size Q, a ruby and diamond three stone ring, set in 18ct yellow gold, size Q and a ruby and diamond ring, the circular-cut ruby is set with a tapered baguette-cut and two circular-cut diamonds to each shoulder, in yellow gold, size P

£150-200



1202

A VICTORIAN GOLD AND HAIR WORK MOURNING BRACELET

centred with a gold mounted portrait of the head and shoulders of a gentleman, with locket compartment to the reverse containing hair, 20cm long

£100-150



1203

A VICTORIAN DIAMOND, BLACK ENAMEL AND GOLD MOURNING BROOCH

formed as a cross, embossed with rose-cut diamond set foliate decoration, one end of the cross opens to reveal a cavity, 6cm long

£250-300



1204
A VICTORIAN CHALCEDONY AND GOLD MOURNING BROOCH
 the chalcedony with applied gold and foliate decoration, within an ornate gold frame, 5.5cm wide
 £200-300



1205
A VICTORIAN ENAMEL AND GOLD BROOCH
 the green guilloché enamel with gold foliate scrolling decoration, centred with a cluster of small pearls, locket compartment to the reverse containing hair, 5cm wide
 £250-300



1206
AN AQUAMARINE AND PEARL BROOCH
 the circular-cut aquamarine is set with two small pearls, in 15ct gold, 6cm long, together with a garnet brooch, set with oval and circular-cut garnets in gold, 3.8cm long
 £100-150



1207
AN AMETHYST AND DIAMOND BROOCH PENDANT
 the circular-cut amethyst is set within a surround of half pearls and an outer foliate border mounted with circular cinnamon coloured diamonds and small pearls, in gold, 2.5cm dia., together with a pair of amethyst, pearl and gold stud earrings
 £600-700



1208
AN AMETHYST AND PEARL SET BROOCH PENDANT
 the foliate openwork mount is set with an oval-shaped and two circular amethysts and overall with small pearls, suspending a pear-shaped amethyst drop, in gold, 4cm wide
 £350-400



1209
AN ANTIQUE PINCHBECK LONG GUARD CHAIN
 formed with pierced hollow links, 132cm long
 £200-300



1210
AN AMETHYST DROP NECKLACE
 formed with two briolette amethyst drops, suspended from a circular-cut amethyst on a gold chain, 40.5cm long
 £200-300



1211
A GOLD, EMERALD AND DIAMOND HALF HINGED BANGLE
 set to one side with embossed rope and ball decoration mounted with three circular-cut emeralds and two rose-cut diamonds, internal measurements 5 x 5.8cm
 £350-400



1212
A PAIR OF VICTORIAN GOLD DROP EARRINGS
 each with ball decoration, 3.1 grams
 £200-300



1213
A PAIR OF VICTORIAN GOLD DROP EARRINGS
 each with applied foliate and scrolling gold decoration, 6.5cm long, 18 grams
 £200-300



1214
A VICTORIAN CARVED HARDSTONE CAMEO PENDANT
 depicting the profile of a classical woman, set within a border of rose-cut diamonds and pearls, in gold, 2cm wide
 £300-500



1215
A CARVED SHELL CAMEO OVAL SHAPED BROOCH
 depicting a rural mountainous scene, in a gold mount, 4.8cm wide
 £100-150



1216

**A FRENCH CARVED
HARDSTONE CAMEO
BROOCH**

depicting a classical woman as
Flora, in ornate gold frame, with
French eagle's head mark on the pin,
5 x 3.5cm

£800-900



1217

**A CARVED HARDSTONE
CAMEO BROOCH**

oval, depicting the head and
shoulders of a classical woman, in a
gold frame, the cameo 4 x 3cm

£400-500



1218

**AN AMETHYST AND PEARL
SET NECKLACE**

the openwork mount set with
an oval-shaped amethyst and
with small pearls, suspending a
pear-shaped amethyst drop, on
a fine link gold chain, 41cm long,
together with a sapphire and pearl
brooch mounted in 15ct gold,
6cm long

£300-400



1219

**A VICTORIAN ENAMEL,
TURQUOISE AND PEARL
SET GIARDINETTO
BROOCH**

with blue guilloche enamel
decoration to the urn, the flowers
set with turquoise cabochons and
half pearls, inscribed with the initials
HRG to the reverse, set in gold,
4.2cm long

£250-300



1220

**AN OPAL AND GOLD
HEART BROOCH**

the heart-shaped opal is set within
a gold heart mounted with a small
diamond, 8cm long

£250-300



1221

**A LAPIS LAZULI AND PEARL
SET FOLIATE BROOCH**

centred with an untested pearl and
set overall with half pearls, with
lapis lazuli ball terminals, in yellow
gold, 5cm long

£250-300



1222

**A DIAMOND AND PEARL
RING**

formed with three gold bands each
set with a button-shaped pearl
and rose-cut diamonds, size L 1/2,
together with a gold bar brooch
set with a pearl and two rose-cut
diamonds, 6cm long

£300-400



1223

**AN OPAL AND DIAMOND
CLUSTER BROOCH**

the oval-shaped solid white opal is
set within a surround of single-cut
diamonds in 15ct gold and platinum,
6.5cm long

£250-300



1224

**A PEARL AND GARNET
DRAGONFLY BROOCH**

mounted with a circular garnet and
small pearls, in gold, 6cm long

£80-120



1225

**A VICTORIAN SAPPHIRE
AND DIAMOND BROOCH**

the openwork foliate mount is
centred with an oval-shaped
sapphire and set overall with
rose-cut diamonds in silver and
backed in gold, 3cm wide

£450-550



1226

**A MOSS AGATE AND GOLD
BROOCH**

formed with seven circular moss
agates in gold collet settings,
4.5cm wide

£200-300



1227

**A 9CT GOLD LONG GUARD
CHAIN**

mounted alternately with
oval-shaped and pear-shaped green
tourmalines, 152cm long, 18.6grams

£150-200



1228
A GEORGIAN GOLD AND GARNET WITCHES HEART BROOCH
 mounted with five circular-cut garnets, 2.5cm long
 £100-150



1229
A EARLY 20TH CENTURY SAPPHIRE, DIAMOND AND PEARL BROOCH
 the scrolling foliate design is mounted with five circular-cut sapphires, two small pearls and overall with rose-cut diamonds, in gold, 4.8cm long
 £400-600



1230
A GOLD AND GEM SET BUTTERFLY BROOCH
 set overall with circular-cut sapphires and graduated half pearls, with ruby eyes, in gold, 4cm wide
 £250-300



1231
A PAIR OF VICTORIAN DIAMOND AND PEARL EARRINGS
 each set with an untested pearl drop set within a surround of rose-cut diamonds, suspended from a rose-cut diamond surmount, in silver and gold, 2cm long
 £200-300



1232
A PAIR OF VICTORIAN PEARL AND DIAMOND EARRINGS
 the central half pearl is set within a surround of rose-cut diamonds in silver, backed in gold, with screw fittings, 1cm dia
 £500-600



1233
A GEORGE III GOLD AND PEARL SET SWIVEL MEMORIAL RING
 set to one side with a locket compartment containing hair within a surround of half pearls, with a black enamel plaque to the other side, inscribed Mark Hodgson, Esq died 12 July 1810 aged 52, the bifurcated shoulders with gold engraved decoration. Size M
 £200-400



1234
A GOLD, BLACK ENAMEL, PEARL AND DIAMOND MOURNING RING
 the central cushion-shaped diamond set within a star motif within a black enamel border, the 18ct gold shank with pearl and black enamel decoration, inscribed to the inner shank, In loving remembrance of M.M. Wilson from M.S., hallmarked for London 1872. Size J
 £200-300



1235
A VICTORIAN GOLD AND BLACK ENAMEL MOURNING RING
 centred with a small pearl in gold star motif within a black enamel surround, inscribed to the inside Marion Jackson 4th May 1869, size P 1/2, together with a Victorian gold, diamond, pearl and black enamel mourning ring, inscribed to the inside J.S. died 29 Oct 1876, size M
 £250-300



1236
A GEORGIAN DIAMOND RING
 the rose-cut diamond is set in silver, with gold scrolling shoulders. Size N 1/2
 £200-300



1237
AN 18CT GOLD BUCKLE RING
 with foliate engraved decoration, hallmarked for Chester 1901, 6.2 grams. Size O
 £150-200



1238
A DIAMOND CLUSTER RING
 the central rose-cut diamond is set within a surround of small rose-cut diamonds in yellow gold. Size M
 £200-300



1239
A GARNET AND GOLD RING
 mounted with an oval-shaped garnet in yellow gold. Size O
 £250-300



1240
A GARNET SINGLE STONE RING
 the circular-cut garnet is set in a gold mount with engraved foliate decoration, with further foliate engraving to the bifurcated shoulders. Size P
 £100-150



1241

A PINK SAPPHIRE FIVE STONE RING

the five graduated oval-shaped pink sapphires are set in 18ct gold. Size O 1/2

£200-300



1242

AN 18CT GOLD, DIAMOND AND PEARL GYPSY RING

mounted with a half pearl and rose-cut diamonds, hallmarked for Birmingham 1907. Size M

£100-150



1243

A CHRYSOBERYL CAT'S EYE AND DIAMOND CLUSTER RING

the circular chrysoberyl is set within a surround of rose-cut diamonds in yellow gold. Size Q

£250-300



1244

A GEORGIAN GEM SET REGARD RING

the gem stones mounted in gold closed back settings, size O, together with a 9ct gold and garnet fede ring, size K 1/2 and a ruby and rose-cut diamond five stone ring, set in 18ct gold, size N

£300-400



1245

LOTS 1245-1288

A PRIVATE COLLECTION OF EARLY RINGS AND JEWELLERY, CIRCA 1500-1850

A EARLY 16TH CENTURY CONTINENTAL SILVER MERCHANT'S RING

engraved with a merchant's initials, with foliate decoration to the shank, circa 1500. Size S

£500-700



1246

A MID 16TH CENTURY CONTINENTAL SILVER GILT RING

with rose foliate decoration, circa 1550. Size O

£500-700



1247

A 17TH CENTURY GOLD MEMENTO MORI RING

the centre section depicting a skull, with inscription Behould Thy Ende, circa 1620. Size H

£4000-6000

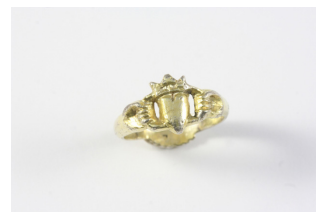


1248

A 17TH CENTURY GOLD MEMENTO MORI RING

the centre section depicting a skull, with inscription Memento Mori, maker's mark to the reverse, RA, conjoined in a shield, circa 1620. Size N

£2000-4000



1249

A LATE 17TH CENTURY CONTINENTAL, POSSIBLY SPANISH, SILVER GILT FEDE RING

the two hands clasping a heart and crown, circa 1680. Size S 1/2. With some restorations

£500-700



1250

AN 18TH CENTURY ENAMEL, DIAMOND AND EMERALD MEMENTO MORI RING

the hinged mask section with black and white enamel decoration and rose-cut diamond eyes, an emerald and diamond set to each shoulder, in gold. Circa 1762. Size M

£1500-2000



1251

AN EARLY 18TH CENTURY CONTINENTAL SILVER MEMENTO MORI RING

engraved with a skull. Size L

£100-150



1252

A CONTINENTAL EARLY 18TH CENTURY DIAMOND RING

mounted with a cluster of diamonds, in yellow gold. Circa 1720. Size P

£300-400



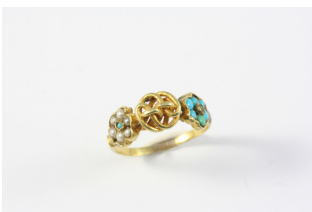
1253
A MID-LATE 18TH CENTURY GOLD GIMMEL RING
 the three gold bands link together to form clasped hands. Size L
 £500-700



1254
AN EARLY 18TH CENTURY GOLD FEDE RING
 formed with two clasping hands, circa 1720. Size M
 £400-500



1255
AN EARLY 18TH CENTURY SILVER FEDE RING
 formed with hands holding a heart, circa 1720, size K, together with a silver gimmel ring, size N and an elephant hair band ring
 £100-150



1256
AN 18TH CENTURY GOLD RING
 with later mounted stones of turquoise, small pearls and a diamond. Size M
 £300-400



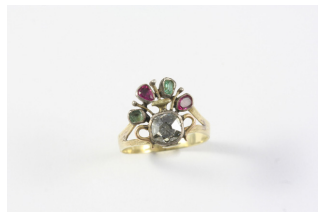
1257
A 19TH CENTURY GOLD RING
 mounted with an 18th century hardstone carved cameo, with foliate engraved decoration to the shoulders. Size M
 £250-300



1258
AN EARLY 19TH CENTURY GIMMEL RING
 the three bands link together to form clasped hands and open to reveal a double heart. Size N 1/2
 £300-400



1259
AN 18TH CENTURY SILVER GILT SILHOUETTE RING
 depicting the profile of a gentleman, circa 1750. Size M
 £200-300



1260
A GEORGIAN DIAMOND AND GEM SET GIARDINETTO RING
 the cushion-shaped diamond is mounted with two rubies and two emeralds, in silver and gold. Size M
 £500-700



1261
A GEORGIAN PEARL AND TURQUOISE RING
 set with four pearls and two turquoise cabochons in gold. Size K 1/2
 £150-200



1262
AN EARLY 19TH CENTURY SILVER GILT RING
 engraved with a mask and with initials, J.H. P.
 £100-150



1263
A GEORGE II AMETHYST SET MOURNING RING
 the amethyst set in gold closed back setting, with black enamel decoration, with inscription for E: L'dy Arundell OB 1751. Size K
 £250-300



1264
A GEORGE II GOLD AND BLACK ENAMEL MOURNING RING
 the centre section depicting a skull, with inscription John Halliday OB 17 June 1737 AE 66. Size P
 £500-600



1265
A GEORGE II ROCK CRYSTAL SET RING
 the cushion-shaped rock crystal is set in gold closed back setting, with foliate decoration to the trifurcated shoulders and black enamel decoration to the shank, with inscription for Ann Nicholson OB 23 Oct 1755 AE 41. Size M
 £250-300



1266
A GEORGE II GOLD AND BLACK ENAMEL MOURNING RING
 formed with a gold skull on black enamel and inscribed M. Pyrke OB 22 Dec 1738 AE 76. Size Q
 £500-600



1267
A GEORGE II GOLD AND BLACK ENAMEL MOURNING RING
 with inscription for Tho Garland dated 1757. Size L 1/2
 £250-300



1268

AN 18TH CENTURY GOLD MOURNING RING

with foliate engraved decoration to the mount, inscribed to the inside Capt. G. Scurrill ob Jan 1724. Size L
£300-400



1269

AN EARLY GEORGE III GOLD AND ENAMEL MOURNING RING

with white enamel decoration, inscribed Charles Savage Esq OB 6 October 1763 AE 73. Size J
£250-300



1270

A GEORGE III GOLD AND PEARL SET MOURNING RING

the navette-shaped centre section containing hair, set within an enamel border with inscription for Gabriel Still, Esq., dated 1786, an outer surround of small pearls, in gold. Size O 1/2
£300-400



1271

A GEORGE III GOLD AND BLACK ENAMEL MOURNING RING

the central section containing hair set within a black enamel border inscribed Eliz Seaman OB 22 July 1799 AE 68, in gold. Size K
£250-300



1272

A GEORGE III SEPIA AND BLACK ENAMEL MOURNING RING

the centre section depicting an urn under a tree, the double interwovenshank inscribed Edward Madgwick OB 15 Jan 1773 AE 62 and Jane Madgwick OB 25 April 1775 AE 63. Size K
£250-300



1273

A GEORGE III GOLD, SEPIA AND BLACK ENAMEL MOURNING RING

depicting an urn under a tree, with inscription for Mary Appleford dated 1783. Size N 1/2
£300-400



1274

A GEORGE III DIAMOND AND GOLD MOURING RING

the centre section containing hair is set within a surround of rose-cut diamonds in silver and gold, with inscription for George Laws OB 5 July 1763 AE 18. Size M
£300-400



1275

A GEORGE III GOLD AND WHITE ENAMEL MOURNING RING

the centre section containing hair, with inscription for Zach Hindes OB 28 May 1777 AE 81. Size M
£300-400



1276

A GEORGE III GOLD AND BLACK ENAMEL MOURNING RING

the centre section containing hair, with inscription for Joseph Davenport dated 1788. Size L 1/2
£250-300



1277

A GEORGE III GOLD AND BLACK ENAMEL MOURNING

with inscription for William Russell OB 10 Jan 1766 AE 72. Size R
£250-300



1278

A GEORGE III GOLD AND BLACK ENAMEL MOURNING RING

set with initials RA, inscribed in gold letters to the black enamel shank Rosamond Addison OB 26 Aug 1769 AE 34, size M, together with a George III gold and black enamel mourning ring, with inscription for Hannah Eyre dated 1774, size M and another George III gold and black enamel ring, with inscription for John Gibson dated 1773, size O
£300-400



1279

A GEORGE III GOLD AND BLACK ENAMEL MOURING RING

with inscription for Mary Cattell dated 1779, size T 1/2, a George III gold and black enamel mourning ring, with inscription for Isabella Bathorne dated 1789, size N, and two other George III gold and enamel mourning rings
£400-500



1280
AN EARLY VICTORIAN GOLD MOURNING RING
 formed with two hands holding two sections containing hair, inscribed to the reverse Alex Purvis OB 4 Jan 1847 AE 59. Size O
 £300-400



1281
A VICTORIAN GOLD AND ENAMEL MOURNING RING
 the centre section containing hair set within a white enamel border, inscribed with motto, Regardez et Souvenez (Watch and Remember), with inscription for R. Warbarton Allen to the white enamel shank. Size I
 £300-400



1282
A GEORGIAN PASTE SET PENDANT
 mounted with green paste stones in gilt metal, 5cm wide, together with a garnet and gold pendant, 5cm long
 £100-150



1283
A GEORGE II ENAMEL AND GOLD FRIENDSHIP PENDANT
 the centre section containing hair, within a scrolling border of white enamel, with inscription Gage d'Amitie (pledge of friendship) to one side, inscribed to the other side Merit Claims Love, 3cm long, together with a gold mourning urn pendant and seven other mourning pendants
 £500-600



1284
AN AMETHYST AND GOLD BROOCH
 the oval-shaped amethyst is set within an ornate foliate mount, 4cm wide, together with a gold portrait brooch, set within a border of rose-cut diamonds, 2.8cm dia
 £250-300



1285
A VICTORIAN GEM SET AND MARCASITE GIARDINETTO BROOCH
 mounted with assorted gem stones and marcasite, 3cm wide
 £200-300



1286
A 19TH CENTURY ENAMEL AND MARCASITE GIARDINETTO BROOCH
 mounted with blue and white enamel decoration, 3cm wide
 £150-200



1287
A VICTORIAN GOLD AND SEPIA MOURNING PENDANT
 depicting an urn under a weeping tree to one side, a symbolic female figure with an anchor (representing Hope) to the other side, inscribed around the gold mount G.C. In Death Lamented As In Life Beloved, 2.5cm long
 £250-300



1288
A PAIR OF 19TH CENTURY BLACKAMOOR HOOP EARRINGS
 decorated with white, black and green enamel, in gold
 £300-400



1289
A THREE ROW UNIFORM CULTURED PEARL CHOKER
 the pearls measure approximately 7.3mm and are set to a 14ct gold clasp mounted with circular-cut sapphires and centred with a cultured pearl, 37cm long, together with a conforming bracelet, 17.5cm long
 £400-600



1290
A CULTURED PEARL AND AMETHYST DOUBLE ROW UNIFORM CHOKER NECKLACE
 the pearls measure approximately 8.5mm and are set to an amethyst and half pearl cluster clasp, 40.5cm long
 £250-300



1291
A DOUBLE ROW GRADUATED CULTURED PEARL NECKLACE
 the pearls graduate from approximately 4.8mm to 6.5mm and are set to an oval-shaped clasp mounted with cushion-shaped old cut diamonds, 36.5cm long
 £300-400



1292

A LONG SINGLE ROW GRADUATED CULTURED PEARL NECKLACE

the pearls graduate from approximately 4.3 to 7.8mm to an openwork clasp mounted with single-cut and rose-cut diamonds, 93cm long

£300-400



1295

A SINGLE ROW GRADUATED CULTURED PEARL NECKLACE

the pearls graduate from approximately 3.3mm to 5.8mm and are set to a rose-cut diamond, cultured pearl and gold clasp, 45cm long

£150-200



1298

A SAPPHIRE AND DIAMOND BRACELET

formed alternately with oval-shaped sapphires and circular-cut diamonds, collet set in yellow gold, 18cm long

£500-700



1301

AN ENAMEL AND GOLD PLATED HALF HINGED BANGLE BY FREY WILLE

decorated to one side with foliate polychrome enamel, internal measurements 4.5 x 5.5cm

£100-200



1293

A FOUR ROW GRADUATED CULTURED PEARL CHOKER

the pearls graduate from approximately 4.1mm to 8.1mm and are set to a ruby and diamond circular clasp, 42cm long

£280-400



1296

A PLATINUM AND 18CT GOLD COLLAR NECKLACE

the three stand sections of platinum mounted with 18ct gold studded links, 36.5cm long, together with a conforming bracelet, 14cm long and a pair of earrings, total weight 145 grams

£1500-2000



1299

A 9CT GOLD BRACELET

of textured woven design, with concealed clasp, 18.2cm long, 41.7 grams

£500-700



1302

AN ENAMEL AND SILVER PENDANT BY CHARLES HORNER

with blue and green enamel decoration, maker's mark, hallmarked for Chester 1910, 3cm wide

£100-150



1294

A SINGLE ROW GRADUATED CULTURED PEARL NECKLACE

the pearls graduate from approximately 5.1mm to 5.9mm to an oval-shaped clasp set with seven old-cut diamonds, 42cm long

£150-200



1297

A PAIR OF 18CT WHITE GOLD FEATHER DROP EARRINGS BY TIFFANY & CO

each stamped T & CO, 4.8cm long. With turquoise Tiffany & Co. pouch

£100-200



1300

A PAIR OF AMETHYST AND GOLD DROP EARRINGS

each earring mounted with a circular-cut amethyst suspending an oval-shaped amethyst in 18ct gold, 5cm long

£500-700



1303

A GOLD CRUCIFORM PENDANT

mounted with a circular cabachon ruby and with rope and ball decoration, 2.5cm wide

£100-120



1304
AN AMETHYST AND GOLD PENDANT
 the pear-shaped amethyst is set in 9ct gold, on a 9ct gold neckchain, total weight 9.5 grams
 £200-300



1305
A CITRINE SINGLE STONE PENDANT
 the rectangular-shaped citrine is set in a 9ct gold mount, on a fine link neckchain
 £150-200



1306
A RUBY, EMERALD AND CULTURED PEARL NECKLACE
 the gold chain is mounted with ruby and emerald beads, and small cultured pearls, 62cm long, together with a pair of confirming drop earrings, 5cm long
 £150-200



1307
A PAIR OF DIAMOND DROP EARRINGS
 each earring mounted with five circular-cut diamonds in white gold collet settings, 2.2cm long
 £150-200



1308
AN AQUAMARINE FOLIATE SPRAY BROOCH
 mounted with six graduated step-cut aquamarines in 9ct white gold, 5cm high
 £300-400



1309
A PAIR OF DIAMOND HEART AND FOLIATE DROP EARRINGS
 set with baguette-cut and circular-cut diamonds in white gold, 6cm long
 £800-1000



1310
A PAIR OF DIAMOND STUD EARRINGS
 set with circular-cut diamonds weighing approximately 0.65 carats in total, in 18ct white gold
 £550-650



1311
A PAIR OF DIAMOND AND GOLD CLIP EARRINGS
 each earring of swirl design and centred with a circular-cut diamond, 2cm wide
 £350-400



1312
A PAIR OF SAPPHIRE AND DIAMOND CLUSTER STUD EARRINGS
 each earring is set with an oval-shaped sapphire within a surround of circular-cut diamonds, in 18ct white gold
 £300-400



1313
A PAIR OF BLUE TOPAZ AND DIAMOND STUD EARRINGS
 each earring set with an oval-shaped blue topaz within a surround of circular-cut diamonds, in 14ct gold
 £600-700



1314
A PAIR OF RUBY AND DIAMOND CLUSTER STUD EARRINGS
 each earring set with an oval-shaped ruby within a surround of circular-cut diamonds, in 18ct white gold
 £500-600



1315
A PAIR OF SAPPHIRE AND DIAMOND STUD EARRINGS
 each earring set with four circular-cut sapphires and five circular-cut diamonds, in 9ct gold
 £150-200



1316

A DIAMOND SOLITAIRE RING

the cushion-shaped diamond weighs approximately 0.80 carats and is set with three small diamonds to each shoulder. Size K

£500-700



1319

AN OPAL, RUBY AND DIAMOND CLUSTER RING

the oval-shaped white opal is set within a surround of calibre-cut rubies and circular-cut diamonds, in yellow gold. Size T 1/2

£500-600

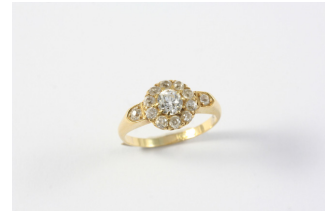


1322

AN EMERALD AND DIAMOND RING

set with three marquise-cut emeralds and three marquise-cut diamonds, in 18ct yellow gold. Size V

£250-300



1326

A DIAMOND CLUSTER RING

the cushion-shaped old-cut diamond is set within a surround of old-cut diamonds, with a diamond set to each shoulder, in yellow gold. Size L

£800-1000



1317

A DIAMOND SOLITAIRE RING

the old circular-cut diamond is set with two baguette-cut diamonds to each shoulder. Size M 1/2

£600-800



1320

A PINK SAPPHIRE AND DIAMOND CLUSTER RING

the oval-shaped pink sapphire is set within a surround of circular-cut diamonds in platinum. Size N

£1500-2000

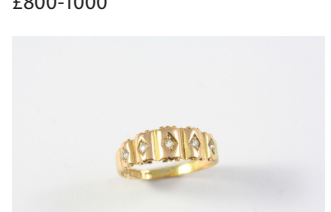


1323

A MABE PEARL AND DIAMOND CLUSTER RING

the mabe pearl is set within a double surround of circular-cut diamonds, in 18ct gold. Size M

£500-700



1327

A DIAMOND FIVE STONE RING

the 15ct gold mount is set with five rose-cut diamonds. Size M

£150-200



1318

A TANZANITE AND DIAMOND THREE STONE RING

the oval-shaped tanzanite is set with two circular-cut diamonds in platinum. Size M 1/2

£850-950



1321

AN OPAL AND DIAMOND CLUSTER RING

the oval-shaped solid white opal is set within a surround of cushion-shaped diamonds, with rose-cut diamonds set to each shoulder, in gold. Size L 1/2

£600-800



1324

A RUBY AND DIAMOND CLUSTER RING

set with oval-shaped rubies and circular-cut diamonds, in 18ct white gold. Size M 1/2

£360-450

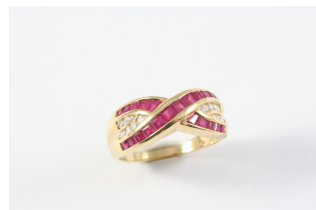


1328

A PINK SAPPHIRE AND DIAMOND CLUSTER RING

the oval-shaped pink sapphire is set within a surround of ten circular-cut diamonds, in 18ct yellow gold. Size O

£600-800



1325

A RUBY AND DIAMOND CROSS-OVER RING

set with calibre-cut rubies and circular-cut diamonds, in yellow gold. Size S

£300-400



1329

AN EMERALD AND DIAMOND CLUSTER RING

the three calibre-cut emeralds are set within a surround of circular-cut diamonds, in gold. Size K

£250-300



1333

A CORAL AND DIAMOND DIAMOND

the oval coral cabochon is mounted with graduated single-cut diamonds to each shoulder, in yellow gold.

Size M

£500-700



1337

A DIAMOND THREE STONE RING

set with three brilliant-cut diamonds, in 18ct yellow gold. Size M

£250-300



1341

A DIAMOND THREE STONE RING

the three graduated emerald-cut diamonds are set in platinum. Size M 1/2

£600-800



1330

A DIAMOND THREE STONE RING

the three graduated circular-cut diamonds are set in 18ct gold. Size M 1/2

£200-300



1334

A TOPAZ AND DIAMOND CLUSTER RING

the oval-shaped topaz is set within a surround of circular-cut diamonds, in 18ct gold. Size L

£350-400

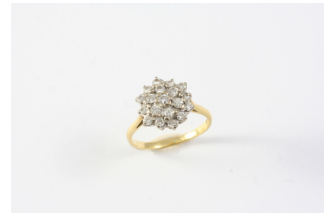


1338

AN AMETHYST AND CULTURED PEARL CLUSTER RING

the oval-shaped amethyst is set within a surround of cultured pearls, in 9ct gold. Size P

£150-200

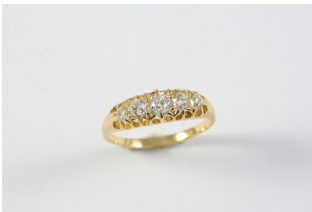


1342

A DIAMOND CLUSTER RING

set overall with circular-cut diamonds in 18ct gold. Size J 1/2

£300-400

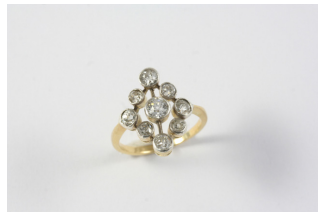


1331

A DIAMOND FIVE STONE RING

the five graduated old circular-cut diamonds are set in yellow gold. Size P 1/2

£250-300



1335

A DIAMOND CLUSTER RING

mounted with nine circular collet set diamonds in gold. Size L

£650-750

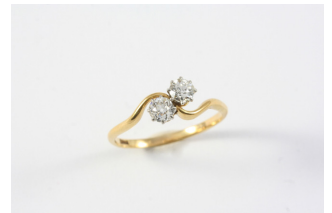


1339

AN AMETHYST AND PEARL QUATREFOIL RING

formed with four oval-shaped amethysts centred with a small pearl, in yellow gold. Size L

£250-300



1343

A DIAMOND TWO STONE CROSS-OVER RING

set with two circular old-cut diamonds, in 18ct gold. Size T

£300-400



1332

A DIAMOND SOLITAIRE RING

the collet set circular-cut diamond is mounted with two small diamonds on an 18ct yellow gold band. Size P 1/2

£500-600



1336

A DIAMOND AND GOLD RING

mounted with rows of circular-cut diamonds in 18ct white gold. Size N

£250-300



1340

A SAPPHIRE AND DIAMOND CLUSTER RING

the oval-shaped sapphire is set within a surround of circular-cut diamonds, in 18ct gold. Size J 1/2

£150-200



1344

A DIAMOND HALF HOOP RING

set with seven brilliant-cut diamonds in 18ct gold. Size P 1/2

£1200-1500



1345

A SAPPHIRE AND DIAMOND CLUSTER RING

the oval-shaped sapphire is set within a surround of fourteen circular-cut diamonds, in 18ct gold and platinum. Size I

£300-400



1348

AN EMERALD AND DIAMOND FIVE STONE RING

the three rectangular-shaped emeralds are set with two circular diamonds, in 18ct yellow gold. Size P

£150-200

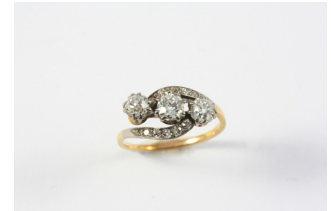


1351

A DIAMOND SOLITAIRE RING

set with a circular brilliant-cut diamond, in white gold. Size N

£200-300



1355

A DIAMOND THREE STONE RING

the three circular old-cut diamonds are set with further diamonds to the shoulders, in gold. Size M

£300-500

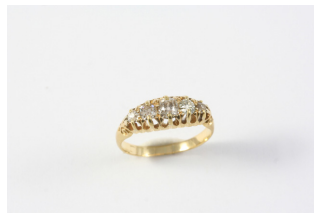


1346

A DIAMOND CLUSTER RING

the circular brilliant-cut diamond is set within a surround of twelve circular-cut diamonds, in 18ct white gold. Size M

£600-800



1349

A DIAMOND FIVE STONE RING

the five graduated old-cut diamonds are set in yellow gold. Size M

£250-300

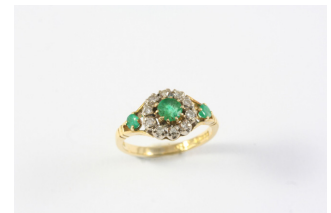


1352

A SAPPHIRE AND DIAMOND FIVE STONE RING

the three circular-cut sapphires are set with two circular-cut diamonds, in 18ct yellow gold. Size M 1/2

£250-300



1356

AN EMERALD AND DIAMOND CLUSTER RING

the circular-cut emerald is set within a surround of circular-cut diamonds, with a circular-cut emerald set to each shoulder, in 18ct gold. Size J

£200-300



1347

A SAPPHIRE AND DIAMOND CLUSTER RING

the oval-shaped sapphire is set within a surround of eight circular-cut diamonds, in 18ct gold. Size L 1/2

£300-400



1350

A RUBY AND DIAMOND CLUSTER RING

the oval-shaped ruby is set within a surround of circular-cut and tapered baguette-cut diamonds, in 18ct gold. Size P 1/2

£250-300



1353

A DIAMOND THREE STONE RING

set with three circular-cut diamonds, in platinum. Size L

£500-600



1357

A RUBY AND DIAMOND CROSS-OVER RING BY LALAOUNIS

set with seven graduated rubies and overall with rose-cut diamonds, in 18ct gold, with maker's mark to the inner shank. Size L 1/2

£600-800



1354

A CULTURED PEARL AND DIAMOND CROSS-OVER RING

set with two cultured pearls, with small diamonds to each shoulder, in platinum and 18ct white gold. Size N

£150-200



1358
A PAIR OF EMERALD AND GOLD EARRINGS BY LALAOUNIS
 each earring centred with a cabochon emerald within a 22ct gold mount with embossed rope and ball decoration, maker's mark to the reverse, 2.2cm dia
 £500-700



1359
AN 18CT GOLD RAM'S HEAD RING BY LALALOUNIS
 realistically formed, with maker's mark to the inner shank, 9.9 grams. Size K
 £200-300



1360
A GOLD AND PEARL SET FANCY LINK BRACELET
 mounted with small half pearls, with concealed clasp, 20cm long, 14 grams
 £400-500



1361
AN EARLY 20TH CENTURY SEED PEARL AND DIAMOND BRACELET
 the four rows of seed pearls are set to a gold clasp mounted with rose-cut diamonds, 19.5cm long
 £400-600



1362
A VICTORIAN GOLD BRACELET
 formed with oval links with reeded decoration, suspending a locket pendant, 20cm long, 33 grams. With fitted box
 £250-300



1363
A GOLD, TURQUOISE AND ENAMEL DROP NECKLACE
 formed alternately with white enamel and red guilloché enamel flowerhead drops and turquoise cabochon drops, on a gold chain, 38cm long
 £250-300



1364
A GOLD, CORAL, PEARL AND DIAMOND HALF HINGED BANGLE
 the openwork design is centred with a clover leaf of two half pearls, a coral cabochon and two rose-cut diamonds, with further coral and half pearls set to the sides, internal measurements 5.5 x 5.0cm., 10.0 grams
 £400-500



1365
AN AMETHYST AND GOLD HALF HINGED BANGLE
 the openwork scrolling mount is set with seven oval-shaped amethysts, internal measurements 4.8 x 5.6cm
 £500-600



1366
A VICTORIAN GOLD AND PEARL SET HALF HINGED BANGLE
 set to one side with three flowerhead clusters mounted with half pearls, internal measurements 5 x 6cm
 £400-600



1367
AN AMETHYST AND PEARL NECKLET
 the graduated oval-shaped amethyst drops are suspended from a row of small pearls, 35.5cm long
 £300-350



1368
A VICTORIAN DIAMOND ARROW AND BUTTERFLY BROOCH
 mounted with rose-cut diamonds, set in silver and gold, 6.5cm long
 £200-300



1369
A RUBY AND DIAMOND OPEN CRESCENT BROOCH
 mounted with graduated oval-shaped rubies and circular-cut diamonds, in gold, 6cm long
 £400-600



1370

**AN EDWARDIAN
AMETHYST AND PEARL SET
NECKLACE**

mounted with three circular-cut amethysts and two oval-shaped amethyst drops, with half pearls set to the 15ct gold scrolling mount, on rope link chain, 48cm long.

In fitted case

£500-700



1371

**A VICTORIAN GOLD,
PEARL AND DIAMOND SET
NECKLACE**

formed with pearl and diamond set stars and crescents and foliate drops, 38.5cm long, together with a pearl and gold starburst brooch pendant, 3.2cm dia

£400-600



1372

A GOLD PANEL BRACELET

formed alternately with gold panels mounted with foliate and shell decoration, with concealed clasp, 18cm long, 16.7 grams. In fitted case

£250-300



1373

**AN EDWARDIAN SAPPHIRE
AND DIAMOND PENDANT**

the openwork foliate mount is set with three oval sapphires, a small pearl and overall with circular and rose-cut diamonds, in silver and gold, 5cm long

£150-200



1374

A DIAMOND BROOCH

mounted with five graduated old cushion-shaped diamonds, in yellow gold, 3.5cm long

£400-500



1375

**A SAPPHIRE AND GOLD
RING**

the 18ct gold graduated ridged mount is set with six calibre-cut sapphires. Size K 1/2

£500-600



1376

**A GOLD AND DIAMOND
RING**

depicting naked female figures holding a diamond ball, 15 grams. Size S

£500-600



1377

**A DIAMOND HALF HOOP
RING**

set with fourteen circular-cut diamonds in 18ct white gold. Size M 1/2

£400-500



1378

**A SAPPHIRE AND GOLD
RING BY TIFFANY & CO.**

the yellow gold shank with 'Tiffany kiss' decoration and set with an oval-shaped sapphire, signed Tiffany & Co. to the inner shank. Size L

£500-600



1379

**AN EMERALD AND GOLD
RING BY TIFFANY & CO.**

the yellow gold shank with 'Tiffany kiss' decoration and set with an oval-shaped emerald, signed Tiffany & Co. to the inner shank. Size L

£500-600



1380

**A RUBY AND GOLD RING
BY TIFFANY & CO.**

the yellow gold mount with 'Tiffany kiss' decoration and set with an oval-shaped ruby, signed Tiffany & Co. to the inner shank. Size L.

£500-600



1381

**A DIAMOND AND GOLD
RING**

the textured 18ct gold band is mounted with a diamond flowerhead cluster, 7.5 grams. Size K 1/2

£700-900



1382

**AN 18CT YELLOW GOLD
AND STAINLESS STEEL RING
BY GUCCI**

formed with two bands magnetically linked, signed Gucci to the inner shank. Size I 1/2

£200-300



1383
AN EMERALD AND DIAMOND CLUSTER RING
 the oval-shaped emerald is set within a surround circular-cut diamonds in 9ct yellow gold. Size M
 £400-500



1387
AN AQUAMARINE AND DIAMOND RING
 the oval-shaped aquamarine is set with six circular-cut diamonds to each shoulder, in 18ct white gold. Size N 1/2
 £400-600



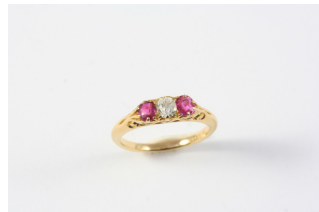
1391
A SAPPHIRE SINGLE STONE RING
 the cushion-shaped sapphire weighs 4.91 carats and it set in 18ct white gold. Size L
 £600-800



1395
A SAPPHIRE AND DIAMOND RING
 the oval-shaped sapphire is set within a surround of circular-cut diamonds, in 18ct yellow gold. Size M
 £400-600



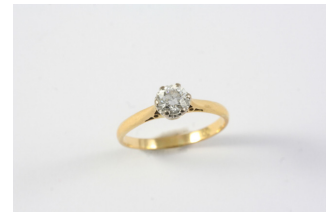
1384
A DIAMOND RING
 the circular-cut diamond is set with three circular-cut diamonds to each shoulder, in 18ct yellow gold. Size S
 £400-500



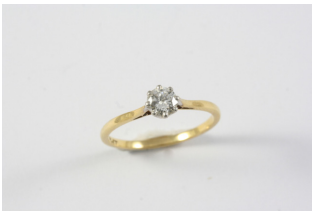
1388
A RUBY AND DIAMOND THREE STONE RING
 the cushion-shaped diamond is set with two circular-cut rubies in gold. Size M
 £250-300



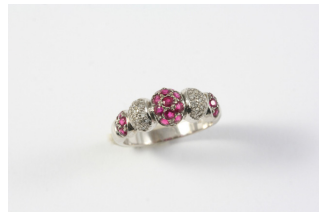
1392
A ZIRCON AND DIAMOND CLUSTER RING
 the circular-cut zircon is set within a surround of circular-cut diamonds, in 18ct gold. Size O
 £200-300



1396
A DIAMOND SOLITAIRE RING
 the circular-cut diamond is set in 18ct yellow gold. Size P 1/2
 £200-300



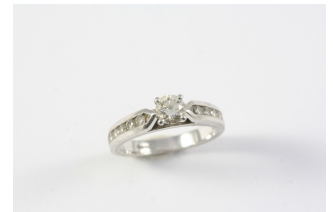
1385
A DIAMOND SOLITAIRE RING
 set with a brilliant-cut diamond in 18ct gold and platinum. Size S
 £200-300



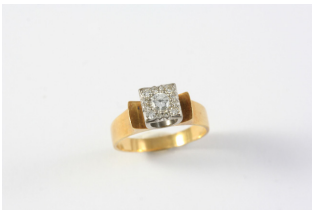
1389
A RUBY AND DIAMOND RING
 formed with five alternate sections of circular-cut rubies and diamonds, in 18ct white gold. Size N
 £280-320



1393
AN EMERALD SINGLE STONE RING
 the cushion-shaped emerald is mounted in gold. Size Q
 £600-800



1397
A DIAMOND SOLITAIRE RING
 the circular brilliant-cut diamond is set with six circular-cut diamonds to each shoulder, in 18ct white gold. Size N
 £500-700



1386
A DIAMOND CLUSTER RING
 the circular-cut diamond is set within a surround of single-cut diamonds, in 18ct gold. Size N
 £350-400



1390
A DIAMOND HALF HOOP RING
 mounted with six rows of circular-cut diamonds, in white gold. Size K 1/2
 £150-200



1394
A DIAMOND CLUSTER RING
 the central cluster of circular-cut diamonds is set within an outer surround of circular-cut and baguette-cut diamonds in 18ct white gold. Size H
 £400-600



1398
A SAPPHIRE AND DIAMOND FIVE STONE RING
 the three circular-cut sapphires are set with two brilliant-cut diamonds, in 18ct white gold. Size M 1/2
 £400-600



1399

A DIAMOND AND GOLD NECKLACE

the white gold necklace mounted with oval-shaped sections set with circular-cut diamonds, 58cm long
£400-500



1400

A DIAMOND NECKLACE

formed with circular-cut diamonds, claw set in white gold, 43.5cm long
£1500-2000



1401

AN AMETHYST AND GOLD DROP NECKLACE

formed with graduated oval-shaped cabochon amethysts, suspending three pear-shaped amethyst drops, in yellow gold, 40cm long
£1000-1200



1402

A BAROQUE PEARL AND GOLD NECKLACE BY TIFFANY & CO.

the yellow gold necklace mounted with graduated baroque pearls, 44.5cm long, together with a conforming bracelet, 19cm long and pair of earrings, 3.5cm long, signed Tiffany & Co.

£2500-3000



1403

A GOLD, RUBY AND DIAMOND BROOCH

the yellow gold scrolling mount is set with circular-cut rubies and diamonds, 4cm wide

£100-150



1404

A GOLD, LAPIS LAZULI AND MALACHITE GOLFING BROOCH

signed Chaumet, Paris and with French marks, circa 1960, 4.5cm wide
£1650-2000



1405

A DIAMOND SET HORSE'S HEAD AND HORSESHOE BROOCH

pavé set with circular-cut diamonds, with emerald eye, set in platinum, 3.5cm wide

£3500-4000



1406

A PAIR OF GOLD AND DIAMOND FLOWERHEAD CLIP EARRINGS BY KUTCHINSKY

each set with a central cluster of brilliant-cut diamonds within an 18ct gold flowerhead, each signed Kutchinsky, hallmarked for London 1968, 2.5cm dia

£3200-4000



1407

A DIAMOND AND GOLD FOLIATE SPRAY BROOCH BY KUTCHINSKY

the 18ct gold textured mount set with brilliant-cut diamonds, signed Kutchinsky and hallmarked for London 1968, 5.5cm wide

£2500-3000



1408

A RUBY, EMERALD AND DIAMOND FOLIATE SPRAY BROOCH

mounted with calibre-cut emerald, circular-cut rubies and circular-cut and baguette-cut diamonds, in 18ct gold, 4cm long

£400-500



1409

A DIAMOND LINE BRACELET

formed with fifty six circular-cut diamonds, in 18ct white gold, 18.5cm long

£1000-1200



1410

A RUBY, EMERALD, SAPPHIRE, DIAMOND AND GOLD NECKLACE

the gold necklace formed with alternate polished navette and cross-shaped links, mounted to the centre with sections of square-shaped rubies, emeralds and sapphires, each divided by a gold cross-shaped link mounted with circular diamonds, 42cm long, 35 grams

£1000-1200



1411

A RUBY, SAPPHIRE, EMERALD AND DIAMOND BRACELET

formed with alternate sections of square-shaped rubies, sapphires and emeralds, each divided by pairs of circular-cut diamonds, in 18ct gold, 18.5cm long, 14 grams

£420-550



1412

A FRENCH DIAMOND AND GOLD FOLIATE SPRAY BROOCH

set with a circular-cut diamond and overall with graduated single-cut diamonds, with French marks, including the French eagle's head mark for 18ct gold, 6.5cm long.

£1200-1500



1413

A CARVED NEPHRITE JADE, ENAMEL AND DIAMOND BROOCH

formed as a bonsai tree, with red enamel and diamond decoration, 4cm long.

In fitted case by Mappin & Webb

£1500-1800



1414

AN 18CT GOLD AND GEM SET BRACELET

mounted with assorted rectangular-shaped gem stones, including citrine, aquamarine, amethyst and garnet, 19.5cm long

£600-800



1415

A CHRYSOPRASE AND GOLD FISH BROOCH BY HANS GEORG MAUTNER

the body formed with a section of chrysoprase, maker's mark HGM, hallmarked for London 1966, 2.5cm wide

£500-700



1416

A GOLD AND DIAMOND STYLISTED FOLIATE BROOCH

mounted with graduated circular-cut diamonds, 7cm long

£500-700



1417

A DIAMOND GRAND PIANO BROOCH

set overall with circular-cut diamonds, in 18ct white gold, 4cm wide

£2500-3000

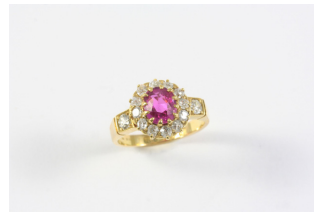


1418

A SAPPHIRE AND DIAMOND THREE STONE RING

the circular-cut sapphire is set with two brilliant-cut diamonds, in platinum. Size O 1/2

£1500-2000



1419

A PINK SAPPHIRE AND DIAMOND CLUSTER RING

the oval-shaped pink sapphire is set within a surround of round old-cut diamonds, in 18ct gold. Size L 1/2

£1800-2200



1420

A SAPPHIRE AND DIAMOND CLUSTER RING

the oval-shaped sapphire is set within a surround of circular-cut diamonds, in 18ct white gold. Size M 1/2

£3000-4000

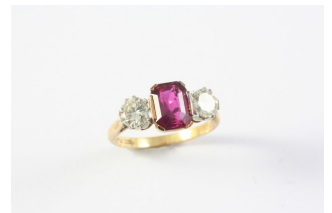


1421

A SAPPHIRE AND DIAMOND CLUSTER RING

the oval-shaped sapphire is set within a surround of circular-cut diamonds and an outer surround of circular-cut sapphires, in gold. Size O 1/2

£800-1200



1422

A DIAMOND AND SPINEL THREE STONE RING

the rectangular-shaped red spinel is set with two brilliant-cut diamonds, in 18ct yellow gold and platinum. Size O

£500-700



1423

A RUBY AND DIAMOND RING

the oval-shaped ruby is mounted in yellow gold, with two diamonds set to each shoulder. Size H

£1000-1200



1424

A SAPPHIRE, DIAMOND AND ENAMEL CLUSTER RING

the oval-shaped cabochon sapphire is set within a surround of cushion-shaped diamonds, with an outer border of blue enamel set with rose-cut diamonds in star settings, in yellow gold. Size N 1/2
£1000-1200



1425

AN EARLY 20TH CENTURY ENAMEL AND DIAMOND BROOCH

centred with 1903 mounted with rose-cut diamonds, within a surround of red guilloche enamel and a border of small pearls, with red guilloche enamel bow surmount, in gold, 3cm wide
£150-200



1426

A FRENCH DIAMOND AND PEARL BOW BROOCH

the openwork mount set overall with rose-cut diamonds and centred with small pearls, with French import mark, circa 1910, 6cm long
£600-800



1427

A LATE VICTORIAN DIAMOND AND PEARL SET BROOCH

the foliate openwork design is mounted with old cushion-shaped and rose-cut diamonds and with three untested pearls, in silver and backed in gold, 3.8cm wide
£800-1000



1428

A GARNET AND GOLD NECKLACE

formed with circular faceted garnets set in gold foliate settings, 41cm long. The necklace divides to form a bracelet
£700-800



1429

A SAPPHIRE AND DIAMOND FOLIATE SPRAY BROOCH

set overall with circular-cut sapphires and diamonds in white gold, 5.5cm long
£400-500



1430

A DIAMOND AND GEM SET GIARDINETTO BROOCH

set overall with circular diamonds, and various gem stones, including sapphire, zircon, amethyst and tourmaline, set in silver and gold, 5.5cm wide
£300-400



1431

A PAIR OF DIAMOND AND GEM SET EARCLIPS

each mounted with old-cut diamonds, calibre-cut rubies and circular-cut rubies, sapphires, garnets and zircons, in silver and gold, 2cm high
£200-300



1432

A VICTORIAN DIAMOND FOLIATE BROOCH

millegrain set overall with graduated old-cut diamonds, the central flowerhead set en tremblant, within a foliate surround, set in silver and backed in gold, 5.5cm wide
£1000-1200



1433

AN EDWARDIAN DIAMOND BROOCH

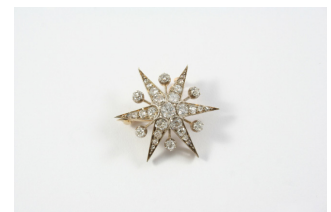
millegrain set with graduated old circular-cut diamonds, in gold, 6.5cm long
£350-450



1434

A GOLD, ENAMEL AND PEARL BRACELET

the gold link bracelet mounted with an oval section of white enamel embossed with initials in red and blue guilloche enamel, set within a border of small pearls, 17.5cm long
In fitted case by R. & S. Garrard & Co., 25 Haymarket, London
£300-500



1435

A VICTORIAN DIAMOND STAR BROOCH PENDANT

set overall with graduated old cushion-shaped and rose-cut diamonds, in silver and backed in gold, with detachable brooch fitting, 3cm wide
£500-700



1436
AN EDWARDIAN DIAMOND AND PEARL BROOCH
 the oval openwork design is mounted with old-cut and rose-cut diamonds, with four small pearls, in platinum, 4cm wide
 £1250-1800



1439
A DIAMOND SOLITAIRE RING
 the cushion-shaped old-cut diamond weighs approximately 2.20 carats and is set in 18ct yellow gold. Size P
 £6000-7000



1441
A DIAMOND AND PEARL NECKLET
 formed with three cushion-shaped diamonds on knife-edge setting, suspending a baroque pearl drop, the pendant 5cm long
 £600-800



1444
AN ART DECO DIAMOND BOW BROOCH
 set overall with graduated old circular-cut diamonds, in platinum, 5cm long
 In fitted case by the Goldsmiths and Silversmiths Company Ltd.
 £3500-4000



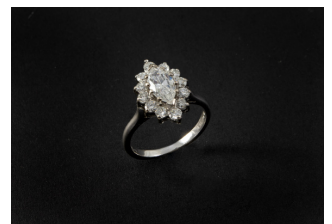
1437
A VICTORIAN SAPPHIRE AND DIAMOND HORSESHOE BROOCH
 mounted with four old cushion-shaped diamonds and five oval-shaped sapphires, in silver and gold, 2cm wide
 £500-700



1440
A VICTORIAN DIAMOND AND PEARL DOUBLE HEART RING
 mounted with two half pearls within a surround of rose-cut diamonds, with further rose-cut diamonds set to the bow surmount, in silver and gold. Size R
 £300-500



1442
A VICTORIAN GARNET AND GOLD SNAKE NECKLACE
 the garnet head with rose-cut diamond eyes, set to a graduated snake link necklace, 39.5cm long
 £600-800



1445
A DIAMOND MARQUISE-SHAPED CLUSTER RING
 the marquise-shaped diamond weighs approximately 1.10 carats and is set within a surround of circular-cut diamonds, in 18ct white gold. Size J
 £2500-3000



1438
A GOLD AND ENAMEL PANEL BRACELET
 the openwork scroll design set overall with polychrome enamel decoration, 18cm long
 £800-1200



1440A
A SINGLE ROW GRADUATED NATURAL PEARL NECKLACE
 the one hundred and seven pearls graduate from 2.5mm to 5.8mm to a diamond set barrel-shaped clasp, 43.5cm long.
 Accompanied by report number 20424 from The Gem & Pearl Laboratory dated 3rd September 2021 stating that all the pearls are natural saltwater pearls.
 £400-600



1443
A VICTORIAN GOLD, TURQUOISE AND PEARL SNAKE NECKLACE
 the head mounted with turquoise cabochons and half pearls, with garnet eyes, to a snake link chain, 44.5cm long
 £800-1000



1448
A PAIR OF DIAMOND DROP EARRINGS
 each set with baguette-cut and brilliant-cut diamonds in platinum, with detachable tops, 5.5cm long.
 In fitted case by Harvey & Gore
 £6000-7000