



Furniture Clocks & Rugs

FRIDAY 15TH OCTOBER AT 10am



Matthew Denney
Furniture, Clocks & Rugs

matthew.denney@lawrences.co.uk



1800

A 19th CENTURY SILVER PLATED CARRIAGE CLOCK.

With a rectangular ivory effect dial with Arabic numerals, above a subsidiary alarm dial, with a single train movement chiming on a bell beneath the movement, the elaborate silvered case with serpentine fronted mounts with pierced leaf decoration and fluted uprights, 15.5cm high (handle up), 7.5cm wide, 7cm deep. With key.

£80-120



1801

AN EARLY 20TH CENTURY FRENCH BRASS CASED CARRIAGE CLOCK.

A brass-cased carriage clock with white enamelled dial and Roman numerals, in a bow-fronted case with bevelled glass panels, with an eight-day single train movement. With leather-covered travelling case, 12cm high.

£80-150



1802

A 19th CENTURY BRASS CASED CARRIAGE CLOCK.

With a rectangular white enamelled dial with Roman numerals and subsidiary alarm dial, with an eight-day two-train movement striking on two coiled gongs, with push button repeat and 'Silence' and 'Quarts' selector to the base, with presentation inscription 'Presented to the Rev J H and Mrs Young 1904', 17.5cm high (handle up), 9.5cm wide 8cm deep. With key.

£100-150



1803

A 19th CENTURY BRASS CASED CARRIAGE CLOCK.

With a rectangular white enamelled dial with Roman numerals and subsidiary alarm dial, with an eight-day two-train movement striking on two coiled gongs with a push button repeat and with a 'Silence/Sonnerie' selector to the base, the back plate engraved in French and numbered 13950, 17cm high (handle up), 8.5cm wide, 7.5cm deep.

£100-150



1804

A GILT BRASS CASED CARRIAGE CLOCK BY BOLVILLER OF PARIS.

With a rectangular white enamelled dial with Roman numerals, with a two-train eight-day movement striking on a bell, the back plate and case numbered 611 in various places, the elaborate cast case with all-over scrolling and figural decoration, the base adorned with hanging bunches of grapes, the back door with all-over strapwork decoration, and the handle in the form of two entwined mermaids, 21cm high (with handle up) 12cm wide and 11cm deep. With key.

£200-400



1805

A MINIATURE BRASS CASED CARRIAGE CLOCK BY HOWELL JAMES AND Co.

With a circular white enamelled dial with Roman numerals with a chain fusee watch type movement, the case with gilt brass sides with all-over engraved scrolling foliate decoration, engraved to the inside of the back door 'Howell James & Co. London' 8cm high (with handle up) 4.5cm wide and 3cm deep. With key.

£80-150



1806

A BRASS CASED CARRIAGE CLOCK BY MOTTU OF PARIS.

With a silvered rectangular dial with Roman numerals and subsidiary alarm dial, with a two-train movement striking with two hammers on a bell, stamped '63, 75 M' and MOTTU A PARIS' to the back plate, the case with rising back engraved in English, 17cm high (handle up) 10cm wide 8cm deep. With key.

£150-200



1807
A 19th CENTURY FRENCH CARRIAGE CLOCK AND TRAVELLING CASE.

With a rectangular white enamelled dial with Roman numerals and Arabic minutes above a subsidiary alarm dial, signed 'Goldsmiths Alliance Limited Cornhill, London, 2359' with a two train eight day movement with push button repeat striking on two coiled gongs, the back plate numbered 2359, the brass case with all over engraved scrolling foliate decoration, 17.5cm high (handle up), 9.5cm wide 8.5cm deep, in leather covered carrying case. No key.

£300-400



1808
A 19TH CENTURY FRENCH BRASS CASED CARRIAGE CLOCK AND TRAVELLING CASE.

With a rectangular white enamelled dial with Roman numerals and Arabic minutes decorated with scrolling blue enamelled decoration, with an eight day two train movement striking on a coiled gong with push button repeat, the movement marked A star B and numbered 978 to the back plate and case, the dial indistinctly named AET.... Paris, 17cm high (handle up) 9.5cm wide and 8cm deep. With leather covered travelling case and double ended key.

£200-300



1809
A LATE 19th CENTURY BRASS CASED CARRIAGE CLOCK.

With a rectangular white enamelled dial with Roman numerals and Arabic minutes, with an eight day two train movement with a push button repeat striking on a coiled gong, the rectangular case with reeded handle and moulded case on short block feet, 19cm high (handle up) 9cm wide 9cm deep.

£200-300



1810
AN ELABORATE GILT BRASS CARRIAGE CLOCK BY HENRY OF PARIS.

With a white enamelled dial with Roman numerals signed 'Henry et Cie', within a finely engraved surround of scrolls and flowers, with an eight day two train movement with push-button repeat striking on a bell, the backplate marked 'HENRY A PARIS'. the case with swing handle and cast gilt florid decoration throughout, 17cm high (handle up) 10cm wide and 8.5cm deep. With key.

£600-800



1815
A VICTORIAN STYLE BRASS SKELETON CLOCK.

With a fretted chapter ring with Roman numerals, with an eight day single train chain fusee movement, between gothic style pierced architectural plates, on a stepped white marble base, 38cm high, 32cm wide, with pendulum and key.

£150-200



1816
A BRASS SKELETON CLOCK BENEATH A GLASS DOME.

A skeleton clock with fretted silvered chapter ring with Roman numerals, two scrolling plates with a single train wire fusee movement striking on a bell, beneath a glass dome on fabric covered and wooden base with small turned feet, with pendulum and key, the clock 26cm high, overall 38cm high, 20cm wide.

£200-300



1817
A VICTORIAN GILT BRASS MANTEL CLOCK.

The elaborate pierced scrolling case containing a central dial with enamelled Roman numerals, with an eight day two train 'Japy' type movement striking on a gong, the back plate stamped 'A&N 25813'. Pendulum and key lacking. 46cm high, 23cm wide and 17cm deep.

£100-200



1818

A 19th CENTURY FRENCH PAINTED AND GILT METAL CLOCK GARNITURE.

The tall rectangular clock with painted panel, the dial with Roman numerals enclosing a military trophy and 'Egan & Sons Paris', above a scene of a man in uniform approaching a seated lady in fine clothes, with an eight day two train movement striking on a coiled gong, the backplate marked 'Al 17573 5 8'. The side panels similarly decorated with men in uniform, the stepped base on short feet, 30cm high, 19cm wide and 15cm deep. With a pair of matching vase shaped ornaments with gilt metal mounts, each 31cm high, 10cm wide. (3) With pendulum.

£150-250



1819

A VICTORIAN BRASS CASED MANTEL CLOCK AND BAROMETER.

With a circular dial with recessed centre with visible escapement, surrounded by Arabic numerals in circular panels, with a two train movement with circular brass back plate marked 'Depose 1618' striking on a coiled gong, the top of the case with a circular aneroid barometer with silvered dial marked 'Made in France', with a heavy swing handle and decorative brass case, 26cm high (handle up), 16cm wide and 13cm deep. With key.

£400-600



1820

A LATE GEORGE III EBONY CASE BRACKET CLOCK.

With a circular convex white enamelled dial with Roman numerals, with a two train chain fusee movement with adjustable pendulum, striking on a bell, the back plate engraved foliate border, the pendulum bob similarly decorated, the arch topped case with carrying handle, the front with brass stringing and a tablet 'In appreciation H.Minch W.R.Tomlinson H.N.Barclay', on short brass feet, with a paper 'Camera Cuss & Co' label to the interior. 26cm high (handle up) 16.5cm wide and 10cm deep. (no key)

£400-600



1821

A FINE VICTORIAN SLATE AND MARBLE MANTEL CLOCK AND BAROMETER.

The upper clock dial with an outer chapter ring with Roman numerals and recessed centre with visible 'brocot' type escapement, signed 'Le Roy & Fils Pals. Ral. Gie. Montpensier 13.15 Paris' and '296 Regent Street London', with an eight day two train movement striking on a bell marked 'Le Roy Fils No. 6096 A Paris'. The clock above a matching Aneroid Barometer dial with decorative compass point centre. In a dome topped black and red variegated marble case, 41cm high, 30.5cm wide and 16cm deep. With pendulum.

£300-400



1822

A REGENCY BRASS INLAID MAHOGANY BRACKET CLOCK.

With a circular convex cream painted dial with Roman numerals, with a two train chain fusee movement with pull repeat striking on a bell, the dome topped case with scrolling brass inlay, moulded lower border and ebonised stringing, the sides with twin ring carrying handles and gothic pierced brass grills, on compressed ball feet, 41cm high, 29cm wide and 16cm deep. With key and pendulum.

£300-500



1823

AN ELABORATE URN SHAPED MANTEL CLOCK.

The clock with a black dial with gilt Roman numerals, with an eight day two train movement striking on a bell, the back plate stamped '1468' and indistinctly named, in a large urn shaped case surmounted by a vase shaped finial, on a marble base with winged animal paw feet, 51cm high, 21cm wide.

£250-350



1824

A GEORGE II STYLE WALNUT CASED BRACKET CLOCK.

The arched dial with moon phase above a silvered chapter ring with Roman numerals and tablet engraved 'James Smith London', with twin winding holes and an eight day two train movement striking on a coiled gong. The decorative case with a gilt metal handle and four matching finials, the dial flanked by further gilt mounts, on short bracket feet. 41cm high, 30cm wide.

£200-300



1825

A REGENCY BRASS INLAID MAHOGANY BRACKET CLOCK.

With a circular convex white enameled dial with Roman numerals and a single train fusee movement, the drum topped case with gadrooned cresting and brass finial, the dial above fluting and architectural base with pendulum window flanked by tapering columns and plinth base, 49cm high, 33cm wide and 14cm deep, with key and pendulum.

£400-600



1826

A REGENCY GILT BRASS MANTLE CLOCK AND GLASS DOME.

The clock with a silvered dial with engine turned centre and Roman numerals, with an eight day two train movement striking on a bell, the case surmounted by a broad twin handled basin, the dial flanked by Regency scrolls, on a conforming base, 25cm high, 18cm wide, on a wooden base and beneath a glass dome, with pendulum and key, 36cm high, 33cm wide.

£200-300



1827

A FINE REGENCY MAHOGANY MUSICAL BRACKET CLOCK BY THOMAS FARR OF BRISTOL.

With a silvered dial with Roman numerals and signed 'Thos Farr, Bristol' With selection dials above for Music/Silent and for one of seven tunes: Bath Waltz, King of Rome's Waltz, Ella Rosenberg, Passion Dance, Waterloo Dance, Duke Wellington and Evening Hymn. With a three train eight day fusee movement striking on a bell with pull repeat, the musical mechanism playing on eleven graduated bells, with engraved back plate and pendulum bob, the case with brass inlay, fish scale side panels, twin ring carrying handles and ball feet. 63cm high, 38cm wide and 21cm deep.

£2500-3000



1828

A FINE GEORGE II EBONY CASED BRACKET CLOCK BY CLAUDIUS DU CHESNE.

A late 17th or early 18th century bracket clock, with an arched dial with silvered chapter ring enclosing a matted ground with visible pendulum bob, twin winding holes and date aperture, with subsidiary date and 'Silence/Sonne' dial and moon phase beneath an arch 'Claudius Du Chesne Londini Fecit, the dial 19.5cm x 13.5cm. With a two train fusee movement striking on four bells and an hour bell with pull repeat, with verge escapement and beautifully engraved back plate with cupid holding a bow and arrow amongst scrolling foliage and exotic birds. The ebonised case with all over gilt mounts and twin carrying handles, the raised top with a central finial, surrounded by four lower finials, the arch topped glazed door beneath brass fret panels and stop fluted square fronted columns, on stepped base, the sides with pierced brass panels. 41cm high, 26.5cm wide, 20cm deep.

Claudius Du Chesne is recorded as working in London between 1693 and 1730.

£4000-6000



1830

A MAHOGANY CASED DROP DIAL WALL CLOCK BY BROOKE OF LONDON.

With a 30cm, white enameled dial with Roman numerals, marked 'Brooke London', with a single train eight day fusee movement, the case with drop dial and pendulum window flanked by carved floral brackets, 49cm high, 37cm wide and 15cm deep, with pendulum and key.

£200-250



1831

AN 18TH CENTURY LONGCASE CLOCK BY AYNSWORTH OF LONDON.

The 25cm dial with silvered chapter ring with Roman numerals with subsidiary seconds dial and circular date aperture within engraved initials IWE, with ringed winding holes, the corners with scrolling spandrels, with an eight day two train four pillar movement striking on a bell. The ebonised case with flat topped hood, the glass flanked by spiral turned columns, the tall trunk door with glass lenticle, the interior with Ivorine label "Percy Webster Vendor", 18th century and later, 188cm high, 42.5cm wide and 23cm deep. With pendulum and two weights.

£100-200



1832

AN 18TH CENTURY WALL CLOCK BY ROBERT BOTLEY OF BLETCHINGLY.

With a 20cm brass dial with silvered chapter ring with Roman numerals, the centre with alarm dial and engraved 'Robert Botley, Bletchingly, with a single hand eight day movement with alarm striking on a bell, with an oak hood and bracket, 18th century and later, 50cm high, 34cm wide, with pendulum and three weights.

£100-200



1833

A MAHOGANY CASED TAVERN CLOCK PALMER OF BRISTOL.

With a broad 50cm slightly convex white painted circular dial with Roman numerals signed Chas. Palmer, Bristol, above a short trunk with door to the front and sloping base, with pendulum and oval section weight, 107cm x 55cm.



1834

A ROYAL POLYTECHNIC BAROMETER.

An elaborate barometer by Joseph Davis & Co. sole manufacturers, Fitzroy works, London, with a 25cm silvered dial with large central tube and either side marked for 'yesterday' and 'today', above twin thermometers and Admiral Fitzroy remarks, all within an elaborate fret work case, 134cm high, 42cm wide.

£100-150



1835

AN OAK FRAMED BAROMETER BY ADIE OF WESTMINSTER.

With a carved 'rope twist' surround and decorative dial signed 'P. Adie Broadway Works Westminster', with aneroid barometer, 19cm wide.

£40-60



1836

A POCKET BAROMETER BY A. SPOTLANDER OF CAPE TOWN.

With a 4.5cm silvered dial marked A. Spotlander Mutual Buildings Cape Town, in a silver plated case and leather carrying case, external dimensions, 7 x 6cm.

£50-80



1837

**A POCKET BAROMETER BY
NEGRETTI AND ZAMBRA.**

An aneroid pocket barometer with a 4.5cm silvered dial marked 'Compensated Negretti & Zambra, London, 6412' engraved to the rim of the case 'James Wilson in Memoriam GWM Umrizur 23 Sept 1874' the reverse with an armorial animal above motto 'Omnia Vincit Amor' the suspension with partial rubbed hallmarks, in a leather covered Negretti and Zambra travelling case, 6.5cm wide.

£150-200



1838

**A REGENCY WHEEL
MERCURY BAROMETER BY
T. ELLISON.**

With a 20cm silvered dial signed 'T Ellison No. 4 Bath Street' with a spirit filled thermometer above, the mahogany case with satinwood and ebony stringing and architectural pediment with central brass finial, 98cm high, 26cm wide.

£80-120



1839

**A REGENCY WHEEL
MERCURY BAROMETER BY
VERGAL OF CHESTER.**

With a 25cm dial with central neoclassical style vase decoration, with a thermometer and dry/damp gauge above and level signed J. Vergal, Chester, Warranted below, with a mahogany frame with satinwood and ebony stringing and swan neck pediment with central brass finial, 109cm high 32cm wide.

£80-120



1840

**A PRESENTATION CLOCK/
BAROMETER BY E. SERMON,
TORQUAY.**

The walnut case with carrying handle above a compass, with gilt finials and all over gilt metal mounts, mounted with a clock and aneroid barometer with central thermometer, the clock dial marked 'E. Sermon Torquay', 28cm high (handle folded down), 31cm wide, 11 cm deep, with key.

£100-150



1841

**A BAROMETER AND
WATCH SILVER FRONTED
DESK SET.**

The rectangular silver fronted case with rounded edges and easel support by Walker and Hall, Birmingham 1923, with engraved date to the front. The case enclosing pocket watch and barometer with enamel dials, 12cm high x 20cm wide.

£80-150



1842

**A TRAVELLING COMPASS BY
DOLLOND OF LONDON.**

With a 12cm silvered dial, with a central flower surrounded by 'Dollond London' with a raised scale of 0 - 360 degrees, in a mahogany case with hinged cover, 15.5cm square and 3.5cm high.

£80-120



1843

**A BAROGRAPH/
STORMOGRAPH BY SHORT
AND MASON OF LONDON.**

A gilt metal barograph, the mechanism marked 'Inglis and Sons, York, Made by Short & Mason London, No. E.5632' Mounted with a weather Forecast index dated 1930, in an oak case, 19cm high, 37cm wide and 22cm deep.

£100-150



1844

A 19TH CENTURY CONTINENTAL WALL CLOCK.

With a cream dial with painted chapter ring with Roman numerals, above a painted sprig of flowers, all with a dark stained and gilt decorated moulded surround, with a single train fusee movement with crown wheel escapement and short 'bob' pendulum. 53 x 45cm, 15cm deep.



1845

A 19th CENTURY ENGLISH DIAL CLOCK.

With a 30cm white enamelled dial and single train chain fusee movement, in a mahogany case, with pendulum, 36cm wide.

£200-300



1846

A 19TH CENTURY SCANDIANVIAN LONG CASE CLOCK CASE WITH FRENCH MOVEMENT.

With a 'comptoise' type movement with white enamelled centre signed F. M. Dagron Bordeaux, within Roman numerals, within a pressed brass surround, the case with large pendulum window revealing a broad pendulum on 'grid iron' suspension, the case painted with flowers and foliage against a grained background, 239cm high, 54cm wide

£150-250



1847

A MARQUETRY LONGCASE CLOCK BY SAMUEL PRICE, LONDON.

With an eight day striking, two train movement with cherub and scroll spandrels, calendar indicator and subsidiary second ring. Walnut case with panels of floral and bird marquetry, the door with glass panel and the hood with spiral corner columns; Dial 28 cms, overall height 204 cms

£2000-3000



1849

A VICTORIAN WALL CLOCK.

with painted dial and four pillar fusee movement in mahogany case, dial 30 cms, 35 cms dia overall

£100-200



1850

A LATE 19TH CENTURY AUSTRIAN BLACK FOREST 'TRUMPETER' WALL CLOCK.

the oak case carved with leaves and with doors opening to reveal a horn player; chiming movement operated by a pin drum; 73 cms high

£200-300



1848

A VICTORIAN WALL CLOCK WITH A PAINTED DIAL SIGNED J. MYERS, LAMBETH

Fusee movement in rosewood case, dial 20 cms, overall height 30 cms

£200-300



1851
AN EARLY 19TH CENTURY
MAHOGANY LONGCASE
CLOCK.

With an arched painted dial with Roman numerals and subsidiary date and seconds dials, the arch signed 'Martin Maidstone' with an eight day two train movement striking on a bell, the case with domed hood and three ball and spike finials, the trunk with arch topped door, 226cm high, 48cm wide.

£200-300



1852
A LONGCASE CLOCK IN
18TH CENTURY STYLE

brass and silvered dial with Tempus Fugit medallion, chiming movement, striking on rods with pin drum operation, mahogany case; 198 cms high

£80-100



1853
AN 18TH CENTURY OAK
LONGCASE CLOCK
BY JOHN STOKES OF
BEWDLEY.

With a brass dial with chapter ring with Roman numerals, surrounding a matted ground with seconds dial and date aperture, with decorative spandrels, with an eight day two train movement striking on a bell, the hood with raised cornice with three painted urn shaped finials, the door flanked by columns, with weights, key and pendulum, 220cm high 47cm wide.

£300-500



1860
A PAIR OF REPRODUCTION
JOINT STOOLS AND
ANOTHER.

Three reproduction joint stools by Stuart Interiors, a pair with rectangular seats with moulded borders on bobbin turned legs, with square section stretchers, 53cm high, the seats 46 x 26cm, the third with turned legs, all with Stuart Interiors mark to the base. (3)

£60-80



1861
A COLLECTION OF FOUR
17TH CENTURY STYLE
JOINT STOOLS.

Each with rectangular seats with moulded borders, on turned legs and moulded stretchers, with 'H' shaped platform stretcher, 54cm high, the seat 46 x 26cm and similar (4)

£60-80



1862
A NEAR PAIR OF VENETIAN
STYLE SCABELLO HALL
CHAIRS.

Each with elaborate scrolling backs with a grotesque head above a coat of arms, flanked by caryatid figures, above solid seats with dished centre and conforming front and rear legs, one with animal paw feet, 99cm high, 40cm wide,

£180-250



1863

A 16TH CENTURY 'POPPY HEAD' PEW END.

An oak pew end with a 'poppy head' top carved in three parts with Gothic style foliage and moulded border, 100cm high, 30cm wide.

£150-250



1864

A 17TH CENTURY BONE AND EBONY INLAID COFFER.

With a rectangular rising top with moulded border, the interior with candle box, the front with three geometric moulded panels divided by ebonised applied half turned mounts, the bone with scrolling engraved decoration, above a single long drawer with three panel front, on stile legs, 84cm high, 135cm side and 66cm deep.

£800-1200



1865

A 19TH CENTURY OAK CASED LONGCASE CLOCK BY GEORGE STEPHENSON OF WARMINSTER.

With an eight day two train movement striking on a bell. the arch topped dial with white enamelled finish and moon phase above a painted chapter ring with Roman numerals with subsidiary seconds dial and date aperture. With pendulum and weights 191cm high, 50cm wide.

£80-120



1866

A PRIMITIVE 'DUG OUT' TYPE CHAIR.

An unusual 'dug out tree trunk' type chair with solid seat, possibly sycamore, 98cm high, 52cm wide.

£80-100



1867

A LATE 17TH CENTURY OAK CHEST OF DRAWERS.

With a rectangular top above a single long projecting drawer with ebonised panels, above four long drawers with moulded fronts, on compressed bun feet, 17th century and later, 89.5cm high, 95cm wide and 60cm deep.

£400-500



1868

A 17TH CENTURY STYLE TURNERS CHAIR.

With a chip carved horizontal top rail with geometric decoration, on a single turned back leg, with ring turned downswept arm supports and solid triangular seat, on turned legs and stretchers, 86.5cm high, 65cm wide and 55cm deep. Probably early 20th century.

£120-180



1869

AN 18TH CENTURY WEST COUNTRY COFFER.

With a broad rectangular top with moulded border above a three panel front with carved stylised foliate decoration and textured centres, on moulded stile feet, 122cm wide, 69cm high, 54cm deep

£200-300



1870

AN USUAL PAIR OF RED WAX FIGURES, POSSIBLY 17TH CENTURY.

Two red wax figures of a lady and gentleman in 17th century style dress, the man with hands together, standing on a naturalistic base, the lady with full skirts, in a similar pose, both 33cm tall, 13cm wide. (2)

£500-800



1871

A RUSTIC HOLLY WOOD CIRCULAR TOP TABLE.

With a four plank pale timber top of tapering legs with turned stretchers, 47cm high, 87cm diameter

£100-200



1872

A WILLIAM AND MARY STYLE OPEN UPHOLSTERED ARM CHAIR.

With an arch topped rectangular back, scrolling arms on vase shaped supports, on conforming legs with wavy 'X' form stretcher with central raised finial. 116cm high, 64cm wide and 70cm deep.

£200-250



1873

**A 17TH CENTURY STYLE
ELM TOPPED REFECTORY
DINING TABLE.**

With a broad three plank top with clamped ends, on twin trestle end supports with conforming central open form support, with a broad central cross rail and three platform bases, 78cm high, 240cm long and 93cm wide.

£800-1200



1874

**A 19TH CENTURY OAK
LONG BENCH.**

With a long single plank top on twin 'A' frame supports with moulded edges, 51.5cm high, 236cm long.

£250-350



1875

**A 17TH CENTURY CARVED
OAK STANDING FIGURE
AND FOUR SIMILAR ITEMS.**

A carved standing figure of a female wearing a hat and holding a long staff, on small bracket, 48cm high 12cm wide, a carved oak bracket decorated with a roaring lion, 30 x 22cm, and three similar smaller panels. (5)

£150-250



1876

**THREE LARGE GERMAN
POLISHED STEEL LOCKS.**

Each with elaborate scrolling plates and engraved decoration, one with key, 26cm x 15cm and similar. (3)

£200-300



1877

**AN 18TH/19TH CENTURY
BRONZE SKILLET.**

A bronze skillet with circular pan on three short legs, the projecting handle marked T.P.B: WATER IV. 14.5cm high, 40cm wide.

£50-100



1878

**A CONTINENTAL PAINTED
PINE CUPBOARD.**

With a rectangular overhanging top and moulding above twin doors with raised central panels, the doors painted with vases of flowers within painted surrounds, the doors enclosing a shelved interior, on bracket feet, 95cm high, 134cm wide and 52cm deep.

£300-400



1879

**A 17TH CENTURY
NUREMBURG ALMS DISH
AND ANOTHER.**

The broad circular dish decorated to the centre with stylised pomegranates and flower heads, within engraved rim and folded over rim, 8cm high, 48cm wide, and a similar smaller dish possibly decorated with St John the Baptist with Christ on his shoulder, with a coat of arms to the centre, 29cm wide. (2)

£180-250



1880

**A CAR MASCOT OF A
NAKED FEMALE, ON A
RADIATOR CAP.**

The female figure leaning forward with her arms outstretched behind in the manner of the Spirit of Ecstasy, with stamped to the base 'REG ED DES' and marked for MLC Co, standing on a radiator cap and wooden plinth, 19cm high 9cm wide.

£100-150



1881

**AN 18TH CENTURY STYLE
YEW WOOD 'MONKS'
TABLE.**

With a rectangular top with canted corners, on turned uprights with under shelf and rectangular section stretcher, 74cm high, the top 86 x 85cm.

£100-200



1882

**A 17TH CENTURY OAK 'SIX
PLANK' COFFER.**

With a long rectangular top with moulded front edge and chip carved ends, the front carved with upright scrolling stylised leaf decoration, the ends with pierced gothic arches, 132cm wide, 58.5cm high and 41cm deep.

£300-400



1883

**A LARGE LATE 17TH/EARLY
18TH CENTURY COFFER.**

With a broad rectangular top with moulded front edge above a four panel front with scrolling carved panels and foliate rails, 76cm high, 138cm wide and 59cm deep.

£300-400



1884

AN EARLY 18TH CENTURY LADDER BACK CHILD'S CHAIR.

With tapering uprights with four graduated arch topped ladders, with downswep arm supports, solid seat and turned legs and stretchers. 77cm high, 39cm wide.

£50-80



1887

A SMALL FRAGMENT OF WHAT IS THOUGHT TO BE COPTIC TEXTILE.

A small fragment of fabric with a running border and frayed edges, with a label 'Coptic Woven Fragment from the Ikle Collection, probably C11th or C12th. Framed and glazed, the fragment 9 x 13cm, 28 x 30cm overall.

£80-150



1890

A RED STAINED SIDE TABLE AS MADE FOR LIBERTY AND CO.

A 17th century style red stained side table with a rectangular top above three frieze drawers with linen fold fronts, on chamfered uprights and open shelf stretcher below, 79.5cm high, 174cm wide and 46cm deep.

£200-250



1893

A CONTINENTAL DOME TOPPED COFFER.

A dome topped coffer with painted finish, the front decorated with flowers and initials B M D and date 1849 within floral wreaths, on bracket feet and scrolling feet, with heavy iron carrying handles. 69.5cm high, 135.5cm wide and 60cm deep.

£100-200



1885

A 17TH CENTURY OAK COFFER FRONT.

A three panel oak coffer front, the central panel with an arch surrounded by foliage, the side panels with similar foliage within 'figure of eight' moulding' flanked by uprights with flower plants and decorative cross rails, 67cm high, 116cm wide.

£100-200



1888

A 17TH CENTURY OAK COFFER.

The rising top with four panels above a four panel front with geometric incised panels, 73.5cm high, 127.5cm wide and 54cm deep.

£200-300



1891

A 17TH CENTURY OAK COFFER.

With a rising rectangular top with moulded border, above a three panel front, the central panel with carved stylised tulip, with floral panels to either side and traces of original coloured decoration, 76cm high, 120cm wide and 54cm deep.

£200-300



1894

A SCULPTURAL PIECE OF BOG OAK.

Of irregular form, with a steel round headed nail, maximum dimensions 25cm high, 71cm long.

£40-60



1886

THREE SIMILAR 18TH CENTURY SALTGLAZED JUGS.

Three stoneware narrow-necked stoneware jugs with narrow necks, loop handles and bellied bodies, one with pricked initials 'RD' 24, 29 and 30cm high. (3)

£100-150



1889

A CONTINENTAL PAINTED COFFER.

With a rectangular rising top above a panel effect painted front decorated with twin panels of flowers, and central spray against a blueground, surrounded by grained finish, 68cm high, 180cm wide and 57cm deep.

£180-250



1892

A REPRODUCTION TURNERS CHAIR.

Of elaborate turned construction with four rail back between tall uprights and finials, with a solid seat, raised hand grips and turned legs and stretchers, 116cm high, 55cm wide and 43cm deep.

£100-150



1895

THREE SIMILAR BEECH AND ELM WINDSOR ARMCHAIRS.

Each with arched backs, curved arm supports and a solid elm seats on turned legs and curved 'crinoline stretchers', 86cm, 90cm and 92cm tall, each with slightly differing splats and details.



1896

A 19TH CENTURY STYLE LIGHT OAK CIRCULAR TOPPED DINING TABLE.

The circular light oak four plank top on a central tapering column and three scrolling legs, 74.5cm high, 128cm wide.

£200-300



1897

AN 18TH CENTURY OAK SIX PLANK COFFER.

The broad top with strap hinges and chain fastening, the front with chip carved ends, 56.5cm high, 116cm wide and 41cm deep.

£80-120



1898

A PAIR OF 19TH CENTURY ITALIAN SAVONAROLA CHAIRS.

A decorative pair of X framed 'throne' chairs with leaf carved frames with central foliate bosses, with apparently original fringed woven fabric, 84cm high, 74cm wide, 52cm deep. (2)

£250-450



1899

A DECORATIVE PAIR OF STONEWARE CAMPANA SHAPED URNS.

A pair of salt glazed urns by Hexter Humpherson & Co of Newton Abbott. Of flared Campana form with decorative rims, twin handles with mask bases, on a narrow column and square bases, with impressed marks, 50cm high, 40cm wide. (2)

£100-200



1900

A LARGE 19TH CENTURY SALT GLAZED FLAGON.

A large stoneware salt glazed flagon with a narrow neck loop handle and ringed decoration above a broad bellied body, 52cm high, 34cm wide.

£60-80



1901

A 17TH CENTURY STYLE ALMS DISH.

With a raised central boss with stylised leaves within a rubbed Latin text and raised broad rim, 5cm high, 44cm wide.

£60-80



1902

A STONEWARE 'SHIP WRECK' JUG.

A salt glazed stoneware jug with straight sided neck, scrolling handle and bellied body, heavily encrusted with barnacles, 18cm high.

£60-80



1903

A PAIR OF 17TH CENTURY CARVED OAK CARYATIDS.

A pair of Caryatids, a female figure with naked chest, reading from a book, and a bearded man holding a dove, both figures beneath scrolling foliage and terminating in tapering panels, 49cm high, 12cm wide. (2)

£300-400



1904

A FRAMED PANEL OF 12 CERAMIC TILES OF PERFORMING ACROBATS.

The twelve tin glazed tiles of performing acrobats attempting various pursuits, often accompanied by small dogs, the tiles each 18 x 13cm, 58 x 54cm overall.

£100-150



1905

A 17TH CENTURY STYLE BRASS WALL SCONCE.

The oval backplate with central oval raised oval within scrolling foliage, with a single 'S' scroll candle branch and sconce. 34 x 30cm.

£80-150



1906

A REPRODUCTION GERMAN RENAISSANCE STYLE CROSSBOW.

With all over engraved bone inlay decorated with foliate and armorial decoration, with steel bow and trigger, 72cm wide and 81cm long. With a loading device and a small collection of arrows in a quiver.

£300-400



1907

A 17TH CENTURY CARVED OAK 'DRAGON' FRIEZE.

Carved in relief with a central armorial flanked by twin facing dragons looking over their shoulders with forked tongues, with scrolling bodies and carved wings, probably Welsh, probably a fragment of a larger panel. 133cm wide, 20cm high

£150-250



1908

A WOODEN GARDEN BENCH IN THE MANNER OF LUTYENS.

With an arched back above a slatted seat with scrolling arm supports, 103cm high, 194cm wide and 60cm deep.

£200-300



1909

A 17TH CENTURY STYLE YEOWOOD DINING TABLE.

With a broad three plank top with shaped end rails, on a frieze with sloping geometric alternating light and dark marquetry veneers, scrolling carved corner brackets and heavy turned legs with rectangular stretchers with moulded edges, 77.5cm high, the top 203 x 80cm

£400-600



1910

A MEDIEVAL STYLE OAK COFFER FRONT.

With seven tall rectangular panels carved with stylised faces evolving into scrolling bodies, divided by turned uprights, with steel lock plate, 69cm high 160cm wide.

£150-250



1911

A LARGE 19TH CENTURY GREEN GLASS WINE BOTTLE.

With a straight sided tapering neck and bulbous body, the underside with indented base, drilled for use as a lamp base, 29cm high 21cm wide.

£50-80



1912

TWO 17TH CENTURY SPANISH DRUG JARS.

Both brightly painted, one of traditional albarelo form decorated with an hour glass beneath the legend 'Eli-Benedite-Laxat', 23.5cm tall, the other of round bellied form with coat of arms in blue and yellow, 26cm high. (2)

£40-80



1913

TWO SIMILAR FRAGMENTS OF 17TH CENTURY CREWEL WORK.

The larger panel with a stylized sun flower with central green stem, approximately 29 x 25cm, the smaller with two fragments of leaves and a blue flower, approximately 23 x 22cm. Both framed and glazed.

£60-80



1914

A QUEEN ANNE WALNUT HIGH BACKED CHAIR.

With a carved walnut framed with crown centred top rail, caned back and turned uprights, the caned seat in a moulded surround, with conforming crown carved rail and scrolling legs and turned stretchers, 107cm high.

£30-40



1915

A WALNUT FRAMED WILLIAM AND MARY STYLE OPEN ARMCHAIR.

With a rectangular raised back, scrolling arms and overstuffed seat, on turned legs and 'H' shaped stretchers, 60cm high, 111cm high and 70cm deep.

£100-200



1916

A FRUITWOOD TURNERS CHAIR.

With heavy turned uprights, the rail back with six turned uprights, with shaped flat arm rests, rush seat and turned stretchers, 103cm high, 64cm wide and 46cm deep.

£100-200



1917

A BRASS BODIED PATENT CORKSCREW AND ANOTHER.

A brass bodied corkscrew, with patent mark to the body, with ivory handle with brush end, 11.5cm wide and a similar wooden handled corkscrew, 12cm wide. (2)

£40-60



1918

A HEAVY BRASS 17TH CENTURY STYLE PRICKET CANDLESTICK.

A heavy brass candlestick with tall pricket, broad drip pan and spreading circular base with silver Flemish type Lion mount, 41cm high, another similar Gothic style candlestick with crenellated drip pan, 30.5cm high and a third early 18th century style stick with tall candle nozzle and raised circular foot, 19cm high. (3)

£40-60



1919

A RENAISSANCE STYLE LUTE.

A full bodied Renaissance style lute with three sound holes, body with contrasting veneers, with twelve strings and adjustable frets, and paper makers label to the inside, 79cm high, 40cm wide.

£50-80



1920

A LARGE PAIR OF CARVED WOODEN BUFFALO HORNS.

A realistically carved pair of buffalo horns in yew wood with leather bound central section, 190cm wide.

£40-60



1921

A BEECH AND ELM HIGH BACKED WINDSOR ARM CHAIR.

With a raised hoop back, three part arm and shaped elm seat, on turned legs and 'H' form stretcher, with traces of original red stained finish, 100cm high, 60cm wide.

£50-100



1922

A 16TH CENTURY STYLE NUREMBERG ALMS DISH.

The centre embossed and engraved with two figures carrying a large bunch of grapes, within a Latin motto 'Ave Gratia Plena, Anno Domini 1503', all within a broad raised border, 7cm high and 46cm wide.

£100-150



1923

A PAIR OF 17TH CENTURY OAK LINEN FOLD PANELS AND OTHERS.

A pair of rectangular panels with gothic linen fold type carved panels with Gothic arches and trefoil foliage, 33.5 x 25cm, a smaller panel carved with a swan, 27 x 19cm and a panel of Gothic tracery. 41 x 16cm. (4)

£100-200



1924

A LARGE 19TH CENTURY STONEWARE FLAGON AND TWO SIMILAR.

A large salt glazed stoneware flagon with narrow neck, loop handle and tapering body, 50cm high 30cm wide and two similar later flagons, one marked for Fletcher and Urwick of Birmingham. (3)

£50-80



1925

TWO BELLARMINE TYPE BOTTLES AND ANOTHER.

Two salt glazed stoneware bottles with bearded faces impressed to the neck, one with a crest to the body, 24 and 28cm high, and a similar plain salt glazed bottle with irregular sides and ring handle, 28cm high. (3)

£80-150



1926

A PENWORK CEDAR PANEL AND A CARVED DOOR PANEL.

A square cedar wood panel with pen work decoration of flowers and foliage amongst an arch, 41 x 45cm and a 17th century style carved oak door with two fielded panels, the lower with carved and pierced lattice work, 61 x 60cm. (2)

£40-60



1927

A YEW, BEECH AND ELM WINDSOR ARMCHAIR.

A 19th century Windsor armchair with arched back, yew splat, solid seat and turned legs with curved 'crinoline' stretcher, 90cm high.

£50-80



1928

A YEW, BEECH AND ELM WINDSOR ARM CHAIR.

A 19th century Windsor armchair with arched back, yew splat, solid seat and turned legs and stretchers with double rails to the centre, 93cm high.

£50-80



1929

**A 17TH CENTURY
'NONSUCH' BED HEAD OR
OVERMANTEL PANEL.**

A fine carved and marquetry overmantel or part bedhead, with three marquetry panels of architectural 'Nonsuch' type buildings with arches, scrolling ornaments and pinnacles with swans swimming in the foreground, the panels within profusely carved oak surrounds with overhanging foliate cornice, two male and two female figures terminating in lion masks with broad rings in their mouths, surrounded by scrolling foliage and scrolls. 70cm high, 154cm wide.

£2000-3000

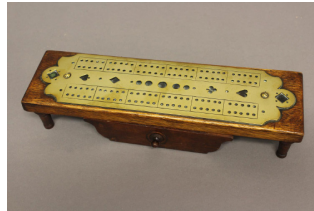


1940

**A FINE EARLY 19TH
CENTURY TURNED
LABURNUM EGG CRUET.**

With a central turned finial/handle above a circular mount for six tea spoons and six egg cups on spike supports, and spreading circular foot, 34cm high, 15cm wide.

£300-500



1941

**A LATE VICTORIAN OAK
AND BRASS CRIBBAGE
BOARD.**

The rectangular oak top mounted with a brass cribbage board pierced with heart, club diamond and spade, on short turned legs and small drawer containing playing markers, 6cm high, the top 31 x 7.5cm

£80-120



1942

**A FINE 19TH CENTURY
SCANDINAVIAN LIDDED
BOX.**

Of lidded 'tub' form with tapering straight burr birch sides and pine lid and base the circular lidded locking in place with a rotating catch, with possible traces of original painted decoration, 11cm high 13cm wide.

£60-80



1943

**A MID 18TH CENTURY
FRUITWOOD SPICE BOX
AND COVER.**

Of turned form with a 'pull off' lid with central finial and raised border, the body with fluted decoration and narrow turned support on spreading base, 18cm high 8cm wide.

£100-150



1944

**A 19TH CENTURY
SCOTTISH STAVED COG.**

A small straight sided drinking vessel of upright staves bound with willow to the outside, with two small projecting side handles, 8.5cm high, 18cm wide.

£60-80



1945

**A 19TH CENTURY TREEN
'BICKER' BOWL.**

The bowl of staved construction with alternating staves of sycamore and alder, with feather joints to the staves and bound with willow, of straight sided form with two short projecting handles, 7.5cm high, 16cm wide.

£80-120



1946

**A TURNED BOXWOOD
SPICE BOWL.**

A late 18th or early 19th century turned spice bowl with a ringed rim, shaped body and circular foot, 9.5cm high, 9cm wide.

£50-80



1947

**A 19TH CENTURY
MINIATURE STOOL.**

The circular seat with turned edge on four turned legs, 13cm high, 16cm wide.

£40-60

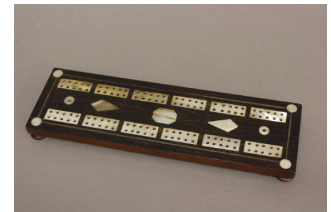


1948

**AN UNUSUAL 19TH
CENTURY TOOL.**

The hand held tool with a curving blade like end and turned grip, with pierced hole to the terminal. 28cm long, 4cm diameter.

£40-60



1949

**A LATE 19TH CENTURY
ROSEWOOD AND MOTHER
OF PEARL CRIBBAGE
BOARD.**

Of rectangular form, the playing surface inlaid with mother-of-pearl shapes, on short turned feet with small recess to the underside with rotating cover with partial paper label for 'W. Low Turners 47...' 26 x 8.5cm.

£30-50



1950
A VICTORIAN LABURNUM WOOD ROLLING PIN.
Turned from a single piece of laburnum with a bulbous centre and two extended handles with turned ends, 48cm long, 8cm wide.
£50-80



1951
A 19TH CENTURY BRASS BOUND OAK PIGGIN.
Of oval staved construction with two brass binding straps and splayed raised handle with brass mount, 26cm high 13cm wide and 19cm deep.
£60-80



1952
A 19TH CENTURY SYCAMORE BOWL AND FRUITWOOD PESTLE.
The sycamore bowl with a broad rim and dished centre on a circular foot, with flattened areas to the sides, possibly to facilitate mixing, and a turned fruitwood pestle, the bowl 8cm high and 21cm wide, the pestle 20cm long. (2)
£60-80



1953
A LATE 19TH CENTURY ROSEWOOD AND EBONY TOBACCO BOX.
Of turned circular form, the pull off lid with a central ebony knob, ringed decoration, slightly flared at the join, on turned ebony feet, 13cm high, 11.5cm wide.
£60-80



1954
TWO SIMILAR 19TH CENTURY OATMEAL ROLLERS.
Of similar turned form with projecting handles, one with grooved ringed centre, the other 'hobnail' pattern, 31 and 33cm long. (2)
£40-60



1955
A LATE 19TH CENTURY LIGNUM VITAE FID.
Of tapering turned form with ringed decoration to the bulbous end and a pierced hole to the narrow end, 37.5cm long, 5cm wide.
£30-50



1956
AN 18TH CENTURY OAK MORTAR AND YEY WOOD PESTLE.
The mortar of turned form with ring turned decoration, on a tapering foot and spreading base, 17.5cm high, 13cm wide, the associated yew wood pestle 20.5cm long and 5.5cm wide.



1957
A WELSH SYCAMORE LADLE.
Late 19th or early 20th century with a broad dished bowl on a shaped chamfered handle with hook end, 31cm long, 12cm wide.
£30-50



1958
A 19TH CENTURY MALLET.
An unusual 19th century mallet with a turned handle and tapering circular form head with ringed decoration, possibly a lead workers bossing mallet. 32cm long.
£70-90



1959
A LATE 17TH OR 18TH CENTURY LIGNUM VITAE PESTLE.
With a heavy bulbous end and tapering handle with shaped terminal, 28cm long, 8cm wide.
£40-60



1960
A MID 19TH CENTURY TREEN BARREL.
In two parts joining at the centre, with ringed decoration to the ends and centre, 10cm high, 7cm wide.
£30-50



1961
A 19TH CENTURY TURNED WOODEN SEAL BOX.
Of circular turned form with ring turned lid and smooth base, the close fitting pull off lid revealing a shallow interior, 2cm high, 6.5cm wide.
£30-50



1962

A LATE 19TH CENTURY NOVELTY ROSEWOOD EGG CUP.

A turned rosewood egg in an egg cup form, 11cm high 4cm wide.

£20-30



1963

A 19TH CENTURY LIGNUM VITAE BOWL.

Of small turned construction with flat bottom, 5cm high, 9cm wide.

£40-60



1964

AN EARLY 19TH CENTURY TREEN PUNCH LADLE.

With a slender handle with shaped end and straight shaft with bowl shaped body, 30cm.

£40-60



1965

A 19TH CENTURY FRUITWOOD WIG POWDERER.

On a slender turned handle with screw fitting ball shaped powder holder pierced with thirteen holes, 14.5cm long, 5cm wide.

£30-50



1966

A SMALL 19TH CENTURY HORN BEAKER.

Of straight sided form with turned ringed decoration, the top with twin shaped flat handles, 5.5cm high 8cm wide.

£30-50



1967

A 19TH CENTURY TREEN LATCH KEY.

An unusual treen key, the rectangular end with six peg like projections, on a shaped and carved shaft with pierced end, 15cm long.

£40-80



1968

A 19TH CENTURY PLATTER.

A circular wooden platter or bread board with tapering rim and signs of much use to either surface, 27cm wide.

£30-50



1969

A COLLECTION OF FIVE WELSH BUTTER SPOONS.

Five 19th century Welsh butter spoons, each with broad shallow bowls on short turned handles with varied ringed decoration, 26cm long, 9cm wide and similar. (5)

£60-80



1970

A 19TH CENTURY STONEMASONS MALLET.

Of traditional form with a heavy, straight sided and flat topped head on a turned handle with gently flared end, 21cm long, 12cm wide.

£40-60



1971

AN EARLY 19TH CENTURY UPHOLSTERERS HAMMER.

The steel head with a rounded end and tapering end, indistinctly named and marked 'Sheffield' with a slender wooden handle with bulbous end, 33cm long.

£40-60



1972

A 19TH CENTURY TURNED BOXWOOD NOVELTY 'PUZZLE'.

Of ring turned form on a pedestal foot with spreading base, the pull off lid with ebonised finial, the top revealing a shallow well, this detaching to reveal a further recess, 7cm high, 4cm wide.

£30-50



1973

A PAIR OF VICTORIAN SHOE SHAPED SNUFF BOXES.

The matching papier mache snuff boxes with rectangular lids with rounded ends, inlaid with flowers and banded decoration, the ebonised shoes with pointed toes and short heels, 5cm high, 12cm wide. (2)

£50-80



1974

A 19TH CENTURY HORN BEAKER.

Of straight sided tapering form with pricked decoration, 9cm high 5.5cm wide.

£20-30



1975

A 19TH CENTURY TURNED NEEDLEWORK BOX.

Of egg in an egg cup form with a pull of lid revealing a thimble and doublethread reel, 9cm high, 4.5cm wide.

£40-60



1976

AN UNUSUAL EARLY 19TH CENTURY BOX OF CHESS STAMPS.

The small mahogany box with an ink pad and twelve 'stamps', six in ebony, six in a light timber with stamps for various chess pieces including Knight, Bishop, Queen etc, the box 5cm high, 10.5cm wide and 3cm deep.

£40-80



1977

A 19TH CENTURY HORN TOBACCO BOX AND COVER.

Of turned form with a pull off circular lid with ringed decoration and raised handle on a conforming tapering body, 13cm high, 9cm wide.

£50-80



1978

A NAPOLEONIC PRISONER OF WAR WORK BRUSH.

A finely made 'prisoner of war' work brush with a turned bone handle with ringed decoration, the brush head with red, yellow, green and white bristles, 21cm.

£60-80



1979

A SMALL WROUGHT IRON EMBER SHOVEL.

With a turned over terminal, spiral haft and broad rectangular shovel blade, late 18th/early 19th century, 17cm.



1980

A LATE 19TH CENTURY TURNED WOODEN COASTER.

Of circular form with a gently splayed ringed edge and a beveled base. 3cm high, 18cm wide.

£40-60



1981

AN 18TH CENTURY DUTCH BRONZE SCULPTURE OF A DOVE IN FLIGHT.

The dove in flight with wings out stretched, originally a finial for a font cover. Northern European, probably Dutch, mounted from behind on a stone base, the bird with 57cm wingspan, 31cm high, the stone base 20.5 x 15cm.

£200-300



1982

A LATE 17TH OR EARLY 18TH CENTURY PAINTED CONTINENTAL TABLE BOX.

A decorative table box, the rectangular lid with stepped central panels painted with a heart surrounded by scrolling foliage, the panelled sides similarly decorated and with flat fronted column corners, on turned feet, the interior with a removable fitted tray revealing a similar tray and two concealed drawers, the interior painted with scrolling gilt decoration against a dark green ground, 13cm high, 38cm wide and 27cm deep.

£300-500



1983

AN 18TH CENTURY POLE SCREEN WITH NEEDLEWORK PANEL.

A pole screen with adjustable shield shaped panel retaining the original floral needlework, on a turned column and three downswapt slender cabriole legs with pointed pad feet and original painted decoration with leaves against a green ground. 142cm high, the needlework panel 53 x 42cm.

£100-150



1984

A LATE 17TH CENTURY TRIPOD TABLE WITH REVOLVING TOP.

With a circular tilting top with moulded edge, on wavy edged cross rails and unusual revolving mechanism, turned column and three flat sided cabriole legs, 70 cm high, the top 85cm diameter,

£200-300



1985

A PAIR OF 18TH/19TH CENTURY BRASS MOUNTED ANDIRONS.

Renaissance style andirons with a tall brass mounted upright with spiral and applied scrolling decoration, on an arched front support with incised details, 78cm high, 62cm deep.

£100-150



1986

A MID 19TH CENTURY 'FOLK ART' DOLLS HOUSE.

The house with a central brick chimney above a pitched roof, the frontage with four windows and a green painted front door, the front and sides with painted brick effect, the front hinged to reveal three rooms with original wall paper linings, 62cm high, 59cm wide and 43cm deep.

£150-250



1987

A LATE 17TH CENTURY OAK CENTRE TABLE.

With a slightly irregular circular two plank top above a shallow frieze, on four turned legs with rectangular stretcher, 62cm high, 66cm wide.

£150-200



1988

A LATE 17TH CENTURY OAK BIBLE BOX.

With a broad rectangular lid with curved border, the front and side panels with lunette carved and punched decoration, on a moulded border, probably West Country manufacture, 19cm high, the top 68 x 40cm.

£150-250



1989

A LATE 16TH CENTURY OAK AND MARQUETRY LONG BOX.

The rectangular top with a moulded front edge and chip carved sides on original pin hinges, the interior with open candle box, the front panel with geometric ebony inlay and conforming chip carved ends, 28cm high, the top 91 x 34cm.

£200-300



1990

AN EARLY 17TH CENTURY TURNERS CHAIR.

An ash and oak turners chair with a broad turned top rail with ringed decoration, tapering towards the centre, on a tapering back leg with radiating turned uprights, with similar arm supports above a solid triangular seat on heavy turned front legs, 75cm high, 60cm wide and 51cm deep.

£500-800



1991

AN EARLY 19TH CENTURY OAK CHILD'S CHAIR.

With a square back with 'x' form rails, shaped arm supports, solid seat and square legs, possibly Welsh manufacture, 52.5cm high, 32cm wide and 28cm deep.

£100-150



1992

AN UNUSUAL PAIR OF 18TH CENTURY JOINT STOOLS.

With rectangular tops with moulded borders and pierced hand grips to the centre, on undecorated splayed square section legs and stretchers, probably West Country manufacture, 55cm high, the tops 48 x 29cm. (2)

£200-300



1993

A 19TH CENTURY BOARDED ELM CHILD'S CHAIR.

A child's chair of unusual boarded form with a tall rectangular back, shaped sides with projecting tops and solid seat, probably West Country manufacture, 86cm high, 33cm wide, 32cm deep.

£140-180



1994

A MID 18TH CENTURY ITALIAN ALTAR CANDLESTICK.

A baroque style candlestick with a flared drip pan on an elaborate floral decorated and turned column on a triform base with all over scrolling decoration and short feet, probably Italian c 1740-80. 64cm high, 22cm wide.

£150-200



1995

AN EARLY 16TH CENTURY STYLE COPPER BOWL.

A circular deep rimmed copper bowl with all over repousse decoration with a foliate centre surrounded by lion's heads holding bunches of grapes in their mouths, divided by pomegranates, the side with lobed decoration and with punched decoration to the rim, 37.5cm wide, 10cm high.

A similarly decorated bowl is included in the Irwin Untermyer collection.

£200-300



2000

AN UNUSUAL 19TH CENTURY PAINTED LEAD TOBACCO BOX.

The square box decorated to each side in relief with cherubs lighting torches, on scrolling feet, the lid with a horse's head finial, the interior with an internal weight or lid with a knop in the form of a character wearing a hat, possibly Mr Punch. 19cm high, 13cm wide.

£100-150



2001

A COLLECTION OF PAPIER MACHE AND SIMILAR WARES.

A Victorian papier mache swing handled cake plate, the surface decorated with scrolling gilt decoration and painted flowers, with a naturalistically cast gilt handle, 30cm wide, 13.4cm high, a similar tea caddy with twin tea compartments, the sloping sides with gilt floral decoration, 12cm high and 21cm wide. And a collection of other items.

£80-150



2002

A 19TH CENTURY FRENCH GILT BRASS FIRE KERB.

Of neo classical design with central raised scrolling detail on a ribbon tied moulded base with twin 'chenet' type ends mounted with cherubs, one reading by a globe, the other by a lyre. the central section 16cm high, 103 cm wide, each end 16cm high, 23cm wide and 10cm deep.

£50-80



2003

FOUR 17TH CENTURY AND SIMILAR DOOR LOCKS AND OTHER ITEMS.

Four 17th century and later door locks, two with keys, a hanging oil lamp and a long handled ladle.

£50-80



2004

A FINE 19TH CENTURY HARDSTONE PANEL.

The rectangular panel worked in an array of hardstones including malachite, lapis and various marbles forming an image of flowers and foliage in a vase, all against a black ground, on a later scrolling coffee table base. The top 115.5 x 58cm, 2cm deep, the table 53cm high.

£300-500



2005

TWO SIMILAR GEORGE III MAHOGANY KNIFE BOXES.

A George III Mahogany knife box with a sloping lid with satinwood crossbanding and stringing, the bow front with 'silver' shield shaped escutcheon, the base with a band of triangular banding, on 'silver' ball feet, the interior with shell inlay and original knife fittings, 40cm high and 22cm wide, The second similar, 37cm high 22.5cm wide. (2)

£200-300



2006

A VICTORIAN COROMANDEL AND BRASS TRAVELLING BOX.

The rectangular top with brass border and central tablet engraved 'C.A.M. Dec 2 1862', the velvet lined interior fitted with a removable tray and a selection of glass jars, above a concealed drawer with fittings for jewellery, the gilt brass lock plate marked 'VR Patent' 17.5cm high, 31 x 24cm.

£100-150



2007

A GILT METAL RELIEF PROFILE PORTRAIT OF THE DUKE OF WELLINGTON.

Side profile of the Duke with bare head wearing military uniform and regalia, framed and glazed in a gilt and ebony frame, the bust approximately 18 x 12cm, 37 x 32cm overall.

£100-150



2008

A FINE PAIR OF 19TH CENTURY ITALIAN PIETRA DURA PANELS.

Each worked in brightly coloured hardstones and marbles with scenes of parrot like birds with exotic plumage and a butterfly amongst flowering foliage, in gilt frames 26 x 32cm. (2)

£300-400



2009

A VICTORIAN CARVED MARBLE STATUE OF A KNEELING NYMPH.

The crouching figure kneeling on a naturalistic base and marble stand, indistinctly signed to the base, 17cm high 14cm wide.

£80-120



2010

A PAIR OF REGENCY GILT BRONZE AND MARBLE CANDELABRA AND A SIMILAR PAIR.

Each with a central tapering fluted column with ring carrying handle to the top, with twin scrolling branches with sconces and broad drip pans, with ribbon tied bows to the centre, on spreading feet and red marble circular bases, 27cm high, 21cm wide. With a similar pair of marble ornaments with broad bronze pedestal dishes to the top with vine leaf decoration on square plinths with beaded detailing, 23cm high, 18cm wide (4)

£150-250



2011

A CAST AND PATINATED BRONZE FIGURE OF PAN.

The figure with animal legs and cloven hooves kneeling, holding his pipes in one hand and a gourd aloft with the other, on an oval naturalistic base, possibly 17th Century. 20cm high, 9cm wide.

£100-150



2012

A CONTINENTAL COPPER AND GILT JEWELLERY BOX.

An oval box, all over decorated in relief with scenes of huntsmen, the lid with the men preparing the days catch, the sides with figures by taverns and various pursuits, with silk lined interior, 10cm high, 14cm wide and 12cm deep.



2013

A SET OF FOUR GLASS PRINTS, c.1760

depicting the Four Seasons, by Charles Corbutt after Robert Pyle, coloured mezzotints, in maple veneered frames

Each image 31.5 x 25cm.; sight 35 x 25cm. (4)

£1200-1800



2014

A REGENCY ROSEWOOD AND BRASS INLAID TEA CADDY.

A rectangular tea caddy of generous proportions with brass strung front and lid with central tablet engraved 'W', the velvet lined interior with two rectangular tea canisters, on ball feet. 22cm high, 29cm wide and 20cm deep.

£100-150



2015

A SILVER PLATED CANDLESTICK IN THE MANNER OF THOMAS HOPE.

An early 19th Century plated candlestick with a foliate scone on a reeded column and bulbous foliate base with triform support decorated with Hope style Egyptian revival faces, on a platform base with three scrolling animal paw feet, fitted for electricity, 47cm high, 19cm wide, and a similar plated candlestick with circular lobed base, 40cm high 18cm wide. (2)

£100-150



2016

A PAIR OF EMPIRE STYLE BRONZE AND ORMOLU TABLE LAMPS.

Each of vase form with gilt rims and bases, with foliate scrolling handles, on stepped bases with gilt friezes and turned feet, fitted for electricity with black and gilt 'tole ware' shades, the bases 31cm high, 18cm wide.

£80-120

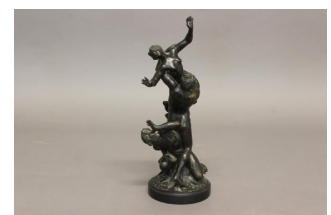


2017

A 19TH CENTURY CARVED POLYCHROME FIGURE OF A SAINT.

The female figure standing in a simple white robe and flowing blue cloak, holding her left hand to her breast and her right arm to her side, on a naturalistic base, 78cm high, 18cm wide.

£200-300



2018

THE RAPE OF THE SABINE WOMAN.

A finely cast and patinated bronze after Giambologna, a young man holding aloft the Sabine woman with an older man below on a naturalistic base and circular marble stand with moulded border, 37cm high, 14cm wide.

£200-300



2019

A TUNBRIDGE WARE BOOK SLIDE AND TWO OTHER ITEMS.

A Victorian rosewood and marquetry Tunbridge ware book slide, the dome topped ends decorated with views of Penshurst Place and a crenelated gatehouse, 33cm wide (closed) x 16cm, 56cm open. A similar clamp mounting pin cushion/pin holder and a Shaw Son and Thompson flask in travelling case, 13cm. (3)

£100-150



2020

A REGENCY TORTOISESHELL VENEERED TEA CADDY.

Of rectangular form with double bowed front and raised lid with central rectangular panel, all over decorated in mother of pearl with birds amongst foliage, the interior with twin lidded tea compartments, on compressed round feet, 13cm high, 20cm wide and 13cm deep.

£80-120



2021

THREE LEATHER FIRE BUCKETS.

A red painted leather fire bucket decorated with a gilt Royal Coat of Arms, 26cm high, a second with painted 'West of England Office Exeter' 25cm high and another, all with strap handles. (3)

£50-80



2022

A SQUARE BURR WALNUT SCENT BOTTLE BOX.

The top and sides with burr walnut veneers and ivory edges, the velvet lined interior with four cut glass spirit or scent flasks, with key, 13cm high, wide and deep.

£100-150



2024

A VICTORIAN POLISHED BRASS SERPENTINE FRONTED FENDER.

The serpentine front with a rounded top edge, above beeded and pierced front, 19cm high, 156cm wide and 26cm deep.

£80-150



2025

A PAIR OF EARLY 19TH CENTURY EMBOSSED WATERCOLOURS IN THE MANNER OF DIXON.

Each painted in rich watercolours with groups of roses and other flowers on a rocky outcrop with exotic birds and butterflies. Framed and glazed, 38cm x 48cm overall.

(2)

£300-500



2026

A FRENCH BRASS MOUNTED TOOLED LEATHER BOX AND A SCENT BOTTLE CASE.

A French rectangular box with allover leather surface with engraved copper mounts and gilt tooled decoration incorporating conjoined initials, the interior lined with woven fabric, with twin carrying handles, 32cm wide, 12cm high and 22cm deep, and a 19th century Boulle work box containing two gilt glass scent flasks, 9cm high 10.5cm wide, 6.5cm deep. (2)

£50-80



2027

A PAIR OF VICTORIAN SPIRAL COLUMN CANDLESTICKS.

A pair of heavy brass candlesticks with circular sconces above hexagonal drip pans, on spiral columns and ball bases with three scrolling legs, 45cm high, 21cm wide.

£70-90



2028

A VICTORIAN WOOLWORK PICTURE OF A NAVAL SHIP.

The three masted ship flying a Royal Standard, white ensign and a row of flags, with two smaller vessels to the foreground. 30 c, x 36cm.

£180-250

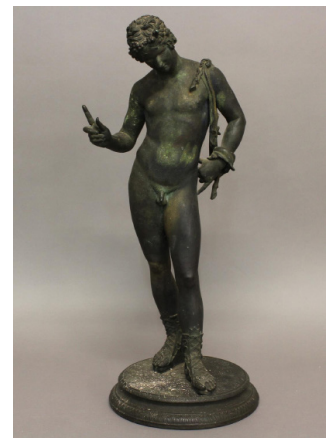


2029

A WILLIAM IV NEEDLEWORK SAMPLER BY ISABELLA ATLEE.

A needlework sampler worked with an alphabet, religious texts and birds within scrolling foliage, by Isabella Atlee, 1834, 41.5 x 33cm, framed and glazed.

£80-120



2030

AN ITALIAN CAST AND PATINATED BRONZE FIGURE OF NARCISSUS.

After the antique, standing, naked except for finely strapped sandals, in traditional form, with fore finger raised and water carrier over his shoulder, on a decorative circular base marked 'Fonderia Sommer Napoli', 63cm high 24cm wide.

£200-300



2031

**A WILLIAM IV
NEEDLEWORK SAMPLER BY
REBEKAH SMART.**

Worked with a text 'Now one days journey less divides...' above a stylised vase of flowers surrounded by animals and plants, within a strawberry border, signed 'Rebekah Smart Aged 9 Years February 8 1937' framed and glazed, 42 x 39 cm overall.

£40-60



2032

**A GEORGE III STYLE FIRE
GRATE.**

With an architectural cast back, open fire basket with decorative front rails, with tall projecting uprights with polished brass finials, 58cm high, 86cm wide.

£150-250



2033

**A REGENCY
TORTOISESHELL VENEERED
TEA CADDY.**

A rectangular tea caddy with moulded front, the rectangular top with a central gilt metal tablet, the front with mother of pearl stripes, the interior with twin lidded tea compartments, on four small compressed ball feet, 12cm high, 18cm wide, 11cm deep.

£60-80



2034

**A BRONZE OR BELL METAL
SKILLET.**

AN 18th Century skillet with a straight sided bowl on three legs, the long projecting handle marked 'T.P.B: WATER III', 13cm high, 39cm wide.

£60-80



2035

**A REGENCY OR EARLY
VICTORIAN LACQUERED
TEA CADDY.**

With a moulded front and flat top all over decorated with gilding and painted flowers with mother of pearl inlay and similar escutcheon, on short turned feet, the interior with tin lined tea compartments (one lid lacking), 14.5cm high 20cm wide.

£80-120



2036

**A SILK EMBROIDERED
PICTURE OF A GIRL
HARVESTING.**

Worked with embroidery threads on a silk ground with a young girl in dress and apron harvesting fruit from a tree, with a cottage in the distance, oval in a black and gilt mount, the frame with Wiseman's of Southampton label, 35 x 28cm overall.

£60-80



2037

**AN 18TH OR EARLY 19TH
CENTURY HORN BEAKER.**

A steel rimmed straight sided beaker, 9.5cm high, 7.5cm wide.

£20-40



2038

**A 19TH CENTURY PEWTER
CHAMBER POT.**

With a broad rim with four touch marks, the body tapering to a splayed foot, 21cm high 31cm wide.

£30-50



2039

**AN EARLY 18TH CENTURY
FRENCH CARVED
DEVOTIONAL FIGURE.**

A polychrome figure of St Anthony in a black gold trimmed cloak, standing with arms outstretched and a small black pig by his feet, 39cm high.

£200-300



2040

**A PAIR OF CHINESE
CARVED WOODEN TEMPLE
GUARDIANS.**

In the form of mythical beasts with dragons heads, open mouthed, on four legs with scrolling tails, on solid bases with decorative borders, 41cm high, 32cm wide and 14.5cm deep. (2)

£40-80



2041

**A LATE 19TH CENTURY
WHITE MARBLE BUST
'POESIE'.**

The bust of an Art Nouveau style young woman looking to her left with gilt metal wreath in her hair, signed Pu Guiella to the reverse, on an orange marble base, 27cm high, 28cm wide 13cm deep.

£80-120



2042

**AN EARLY 19TH CENTURY
SILKWORK PICTURE OF
JOHN FAYNE.**

The image of a young boy being John Fayne, 11th Earl of Westmorland painted by Sir Joshua Reynolds in 1797, wearing a straw hat and crimson sash in a wooded landscape, with sewn details and painted background, framed and glazed, 31.5 x 27cm.

£100-150



2043
A GEORGE II NEEDLEWORK PANEL.
 A finely sewn needlework panel depicting a huntsman and hound with a fallen angel at their feet with a cherub with bow and arrow above, in a landscape with buildings to the distance, in a carved gilt frame, 73 x 49 cm.

£100-200



2044
A STEEL AND BRASS PAN BALANCE, LYME REGIS 1796.
 A steel balance, the beam marked Nicholl & Fowler, with two circular brass pans engraved 'Lyme Regis Dorset 1796' and with later stamped Victorian duty marks. The beam 35cm wide, the pans 14cm wide, and a similar smaller unmarked balance. (2)

£80-150



2045
A LARGE ALABASTER AND MARBLE LAMP SIGNED L. SCHEGGI.
 The large lamp with a carved white marble base with a central column surrounded by dancing cherubs, on a circular base with carved vine and grape decoration, on a leaf carved base, drilled for electricity, the top with a broad dished shade carved to the border with further putti with swags of grapes and vine leaves, with a circular lid with central pommel, now lacking light fitting, 84cm high, 30cm wide.

£400-600



2046
AN UNUSUAL AMERICAN GREEN PAINTED BOWL.
 A turned wooden bowl with original green painted finish with a paper label to the base 'A splendid selection of American Cheese, suitable for farmers, at 31/2d per lb, and upwards At J. Hird's', 36cm diameter.

£120-180



2047
AN 18TH CENTURY HANGING KITCHEN HOOK.
 A set of kitchen hanging hooks, of crown shape with central hook and four lower hanging hooks, with original red painted finish, 25cm high, 34cm wide.

£80-120



2048
AN EARLY 19TH CENTURY REVOLVING TOASTING RACK.
 An early 19th century down hearth revolving toaster, with a revolving platform with twin arched sides, on a long handle with pierced end, 12cm high, 34cm wide.

£80-120



2049
AN EARLY 18TH CENTURY PEWTER TABLE SALT.
 With a circular dished top with decorated border on a spreading octagonal base, 6.5cm high, 8cm wide.

£50-80



2050
TWO 18th CENTURY BRASS SHAKERS OR SIFTERS.
 Both of cylindrical form with domed pierced tops and spreading bases, with loop handles, 11 and 7cm high. (2)

£80-120



2051
AN UNUSUAL BRASS WHALE-OIL LAMP AND DRIP TRAY.
 The brass oil lamp with bow fronted lid with acorn shaped knob and projecting wick holder, hanging in a drip tray with raised sides and pierced hanging hole, probably Dutch, 20cm deep and 18cm deep.

£100-150



2052
AN EARLY 19TH CENTURY 'BIRD CAGE' CANDLE HOLDER.
 With a central rising candle holder within a bird cage surround with six uprights and shaped handle, on a turned wooden base, 25cm high.

£200-250



2053

**AN 18TH CENTURY
BRASS SHOE HORN AND
MINIATURE PESTLE AND
MORTAR.**

A brass shoe horn with curved handle, 18.5cm long, and a miniature pestle and mortar, the mortar 5.5cm high and 5.5cm wide. (2)

£80-120



2054

**A GEORGE II/III
MAHOGANY CAT OR PLATE
WARMER.**

With three turned uprights revolving on a tripod base with cabriole legs and pointed pad feet, 33cm high, 30cm wide.

£80-120



2055

**A 17TH CENTURY STYLE
SEWN LEATHER MUG.**

A black leather sewn mug of traditional construction, late 19th century, 12cm high, 17cm wide.

£40-60



2056

**A GEORGE IV
NEEDLEWORK SAMPLER.**

Worked with an alphabet and numbers above a reverse 'beset with snares at every hand ...' and amongst trees and fruit, signed in a heart 'Elizabeth Richards completed this May 1829', framed and glazed, 41.5 x 34cm.

£40-60



2057

**AFTER THE ANTIQUE: CAST
BRONZE LION.**

A small cast bronze lion wearing a saddle held in place with leaves, with dark brown patination, 4.5cm high 10cm wide.

£60-80



2058

**A LARGE 18TH CENTURY
PEWTER 'UNION SOCIETY'
JUG AND ANOTHER.**

The large lidded jug with a domed cover, the straight sided body with a horizontal band and spreading foot, with scrolling handle engraved with two shaking hands and inscription 'Union Society Established April 22nd 1814: Benjn. Codling Headsman, John Claxton Clerk, Matthew Crask and James Reeves, Supervisors' With a William IV Duty mark to the top, 34cm high, 20cm wide. With a similar flat topped straight sided tankard, 28cm high 18cm wide. (2)

£100-200



2059

**A REGENCY BURR WALNUT
WORK BOX.**

With a domed top with decorative crossbanding enclosing a velvet lined interior, above a rectangular base with single short drawer with fitted velvet lined interior, 19cm high, 23cm wide and 20.5cm deep.

£80-150



2060

**A GEORGE III MAHOGANY
KNIFE BOX.**

The slope fronted lid with ring handle, above a bow front with escutcheon with wavy edged border and twin carrying handles, on three ball feet, the interior refitted for stationery, 37cm high, 23cm wide 19cm deep.

£80-120



2061

**A DOUBLE ENDED CROSS
STITCH NEEDLEWORK
PANEL.**

The long rectangular double ended panel of woven fabric worked in cross stitch with initials 'MvH HGJ' and dated 'ANNO 1712', worked with a variety of symbols including a flowering plant, keys, birds and other devices, overall 124 x 18cm

£100-150



2062

**A TABLE RUNNER WORKED
IN SILK AND METAL
THREAD.**

Worked with a repeated motif of four naively drawn angels around a vase of flowers, with gilt metal borders, backed and unframed, 28cm x 144cm, possibly early 18th century.

£150-250



2063
A LARGE 17TH CENTURY
NEEDLEWORK PANEL.

The rectangular panel worked in blue, white and red with scrolls and flowers, the panel 144 x 40 cm, framed and glazed, 154 x 51cm overall.

£100-150



2064
TWO SIMILAR
INLAID ROSEWOOD
SARCOPHAGUS FORM TEA
CADDIES.

An elaborate burr wood and rosewood tea caddy with a rectangular top with raised central panel with bobbin turned border, above concave sides, on short turned feet, the front and lid decorated with marquetry scenes of deer amongst flowers and foliage, the numbered lock marked Chubb's new patent, with vacant interior. 21cm high 38cm wide, the other similar caddy with Mother of Pearl inlay, fitted interior with two caddies marked 'R' and 'G', 18cm high and 33cm wide. (2)

£200-300



2065
AN UNUSAL CARVED
WOODEN PIPE RACK.

Carved with seven devilish faces with various expressions from open-mouthed happiness to closed-eyed frowns, Victorian or early 20th century. 9 x 37cm.

£80-150



2066
A CARVED STONE
RHINOCEROS.

A carved sculpture of a walking rhinoceros with held held high, in a veined grey stone, 16cm high 33cm wide.



2067
AN EDWARDIAN
HEPPLEWHITE REVIVAL
INLAID TEA TRAY.

An Edwardian mahogany oval tea tray with a raised wavy border and twin carrying handles, the surface all over inlaid with a radiating central motif and scrolling foliage, 60cm x 40cm and 6cm high.

£80-120



2068
AN EDWARDIAN
HEPPLEWHITE REVIVAL
INLAID TEA TRAY.

An Edwardian mahogany oval tea tray with a raised wavy border and twin carrying handles, the surface all over inlaid with a radiating central motif and ribbon tied swags, 61 x 42cm and 6cm high.

£80-120



2069
TWO 19TH CENTURY
MINATURE MAHOGANY
CHESTS OF DRAWERS,

each with an arrangement of five drawers, the largest 22cm high, 25cm wide (2)

£200-300



2070
A REGENCY MAHOGANY
TOILET MIRROR,

the breakfront base with three drawers on bun feet, 63cm high

£80-120



2071
A 19TH CENTURY GILT
WOOD WALL MIRROR,

of shaped rectangular form, the pediment with shell and leaf decoration, 110cm high

£200-300



2072
A GILT BRONZE TRAY,
depicting a couple beneath trees,
signed A. Van Kote, 43cm wide

£80-120



2073
A CLASSICAL GREEK STYLE
RESIN BUST,

of a young man on an ebonised plinth, possibly signed to the reverse, 27cm high

£100-150



2074

A 19TH CENTURY PEWTER ALE JUG.

Of short bellied form with a domed lid and shaped thumb piece and pronounced spout, broad bellied body and turned foot rim, 21cm high, 20cm wide.

£80-120



2075

A 19TH CENTURY 'PRINCE OF WALES' FOOTMAN.

A brass footman, the rectangular pierced top decorated with the prince of wale's feathers above a star and within a border, on tall legs with pad feet, 30cm high, the top 25.5 x 18.5cm and a brass letter rack decorated with classical scenes. (2)

£40-60

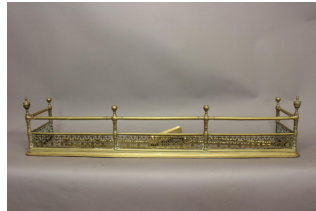


2076

A DAIRY BOWL, COASTER AND OAK BOX.

A turned wooden dairy bowl with ringed edge, 40cm diameter, 11cm high, a small 19th century mahogany coaster with dished surface and baize lined base, 20cm diameter and a small rectangular oak box with a rising lid above two short drawers, one with divided interior, 17.5cm high, 25cm wide and 18.5cm deep. (3)

£80-120



2077

A VICTORIAN BRASS FENDER AND THREE FIRE IRONS,

A heavy brass fender with six uprights, the two at the corner with vase shaped terminals, with pierced grill and moulded base, 32cm high, 147cm wide and 32cm deep, with three long handled fire irons.

£60-80



2078

TWO VICTORIAN COPPER FISH KETTLES AND A SIMILAR JUG.

A copper fish kettle with raised handles, the lid stamped with broad Government arrow and 'R&J Slack 336 Strand London', 27cm high, 59 x 36cm, a similar smaller unmarked example, 17cm high, 63 x 22cm, and a large jug with scrolling handle, stamped 12 pints, 31cm high. (3)

£80-120



2079

A VICTORIAN COPPER HAYSTACK JUG AND TWO SIMILAR ITEMS.

A haystack measure of traditional form with narrow neck, scrolling handle and impressed duty marks, 25cm high, a circular copper cooking pan with flower moulded pattern, 29cm wide and a roasting pan (3).

£50-80



2080

A VICTORIAN TABLE LAMP BASE WITH BLUE GLASS COLUMN.

The octagonal 'Bristol' blue glass column on a hexagonal foliate cast base, 44cm high, 16cm wide.

£100-150



2081

A 19TH CENTURY SAUCERERS MIRROR AND THREE OTHERS.

A circular saucerers mirror with a central circle surrounded by eight smaller circles, within an ebonised surround, 21.5cm wide, a pair of Victorian circular mirrors with etched decoration and another. (4)

£40-60



2082

THREE PAIRS OF VICTORIAN TALL WOODEN CANDLESTICKS.

A pair of oak Gothic revival candlesticks with straight chamfered columns and stepped bases, 46cm high, a pair of turned wooden sticks with gilt metal sconces and spiral turned bases, possibly cedar, 42cm high, and a pair of ebonised sticks with with open spiral uprights and gilt metal sconces, 47cm high.

£80-120



2083

A PAIR OF 18TH CENTURY PETAL BASED CANDLESTICKS.

With narrow drip pans on straight sided nozzles, decorative stems and spreading petal bases, 18cm high 11cm wide and similar pair of 19th century ejector sticks, 16.5cm high. (4)

£40-60



2084

A PAIR OF ANGLO CHINESE BIRD STUDIES IN LACQUERED FRAMES.

Each an ornithological study of a bird on a flowering branch, watercolour, in narrow lacquered frame with gilt chinoiserie decoration, 35.5 x 48cm.

£800-1200



2090
A LATE 17TH/EARLY 18TH CENTURY OAK COFFER.
 With a two panel top with moulded borders above a conforming front, with steel lock plate, 59cm high, 98cm wide and 46cm deep.
 £100-150



2091
A 17TH CENTURY GERMAN CARVED OAK CABINET.
 With a rectangular top above twin panelled doors, each with panelled doors with carved geometric doors with star decoration, the door on pin hinges, enclosing a shelved interior, with carved uprights, the base with a later frieze 'Johan Friedrich Busser M K SO 1617', 84cm high, 104cm wide and 42cm deep.
 £200-300



2092
AN 18TH CENTURY STYLE DELFT RACK.
 With a broad moulded cornice above three central open shelves flanked by four smaller arch topped shelves to either side, 122cm high, 123cm wide and 15cm deep. 18th century and later.
 £100-150



2093
A 17TH CENTURY OAK COFFER,
 probably West Country, the two panelled top above a three panelled front carved with stylised vines, leaves and flwerhead roundels, the reverse unusually also with moulded panelling, height 68cm, width 110cm, depth 48cm
 £350-450



2094
A 17TH CENTURY BACK STOOL.
 With a rectangular open back with scrolling rails, above a solid seat, turned front legs and stretcher with 'H' section stretcher with moulded edges, 83cm high, 39cm wide.
 £60-100



2095
AN OAK JOINT STOOL.
 With a rectangular seat with moulded edge above a lunette carved frieze, on slightly splayed turned legs and square feet and stretchers, 52cm high, the top 47 x 29cm.
 £80-120



2096
AN EARLY 18TH CENTURY OAK SIDETABLE.
 With a rectangular three plank top above a single side-hung frieze drawer, the interior with divisions, on bobbin turned legs with square legs and stretchers, 72cm high, 95cm wide and 58cm deep.
 £150-250



2097
A LATE 17TH CENTURY OAK CHEST OF DRAWERS.
 With a rectangular top with moulded border above four long graduated drawers with moulded fronts and 'spotted graining' effect, the top drawer with carved initials 'MP', with three panel sides, on bun feet. 17th century and later, 85cm high, 88cm wide, 58cm deep.
 £250-350



2098
A LATE 18TH OR EARLY 19TH CENTURY YEWOOD WINDSOR ARM CHAIR.
 With an arched back with single piece arm and pierced central splat above a solid shaped ash seat, on turned tapering legs with curved stretcher. 90cm high 57cm wide.
 £180-250



2099
A GEORGE III OAK DRESSER AND RACK.
 The rack with a broad cornice above two open shelves with moulded fronts and original hooks, the base with a broad oak top above three frieze drawers with brass handles, on square legs with pot board base, 179cm high, 169 cm wide and 44cm deep.
 £300-500



2100
A SMALL EARLY 18TH CENTURY OAK COFFER.

The rectangular top with moulded border above a two panel front with inlaid geometric figures within arch and column surrounds, the rails with early 'strap work' type carving against a matted ground, 49cm high, 70cm wide and 45cm deep.

£60-100



2101
AN OAK JOINT STOOL.

With a rectangular top with moulded edge above a moulded and wavy edged frieze, on splayed turned legs and rectangular section stretchers, 57cm high, the top 47 x 26cm

£50-80



2102
A 19TH CENTURY DUTCH WALNUT DRAW LEAF DINING TABLE.

The rectangular panelled top with two broad central planks, with two concealed extending leaves, on a rectangular base with splayed turned legs and rectangular stretcher, 78cm high, 95.5 x 158cm closed, 95.5 x 282cm fully extended.

£200-300



2103
A CARVED OAK SETTLE WITH BOX BASE.

With a twin panelled back beneath a scrolling top rail, the panels carved in relief with winged Italianate beasts, with a rising seat above a twin panelled front and scrolling arm supports, 17th century and later, 95cm high, 80cm wide and 47cm deep.

£200-300



2104
A GEORGE III MAHOGANY BOW FRONT BEDSIDE COMMODE.

The bow front top with raised frieze above a single cupboard door modelled as a pair of doors, above a commode drawer with brass handle, refitted as a shallow drawer, with pierced hand-holds to either side, on square legs, 76cm high, 47cm wide, 49cm deep.

£300-400



2105
A VICTORIAN EBONISED AND GILT METAL CANTERBURY.

With twin divisions and lyre shaped ends with 'wire' filled panel, elaborate ring handles, on short side projecting feet with gilt animal paw feet, 40cm high, 57cm wide and 31cm deep.

£100-200



2106
A 19TH CENTURY DUTCH SERPENTINE FRONT SIDE TABLE.

The serpentine fronted top with shaped sides and broad cross banding and stringing, above a single frieze drawer with twin ring handles, on square tapering fluted legs with block feet. 74cm high, 76cm wide and 41cm deep.

£300-400



2107
A GEORGE III MAHOGANY SILVER TABLE.

With a rectangular top with moulded edge above a blind-fret frieze, on square tapering fluted legs with pierced corner brackets and block feet, 68cm high, the top 67 x 41cm.

£200-300



2108
A GEORGE III MAHOGANY SOFA TABLE IN THE MANNER OF GILLOWS OF LANCASTER.

With a rectangular top with drop flap ends with moulded border above two short drawers and dummy drawers with turned knob handles, on shaped uprights with carved heart shaped ornament, with a turned cross stretcher, on downswept legs with carved animal paw feet and recessed brass barrel form castors, 72cm high, the top 68 x 146.5cm (open).

£400-600



2109
AN EARLY 19TH CENTURY
MAHOGANY PEDESTAL
TABLE.

The rectangular top with canted corners, on a turned tapering column with vase shaped base and three down swept cabriole legs with pad feet, 71cm high, the top 57 x 59cm.

£80-120



2110
AN EARLY 19TH CENTURY
BEECH AND ELM WINDSOR
ARM CHAIR.

With a raised hoop back, single piece arm support and pierced splat, above a solid seat on turned legs and 'H' section stretcher, 90cm high, 56cm wide. With early metal repairs.

£100-150



2111
AN EARLY 19TH CENTURY
OAK TIP TOP OCCASIONAL
TABLE.

With a circular top on a turned tapering column with vase shaped base and three down swept cabriole legs with pad feet, 68cm high, 75cm wide.

£80-150



2112
AN ASH AND ELM
WINDSOR CHAIR,
the arched spindle back with
pierced splat on turned supports
and crinoline stretcher, height
105cm

£100-200



2113
A PRIMITIVE OAK CRICKET
TABLES.

With a circular top on a wavy edged frieze and three square tapering legs, 56cm diameter 64cm high.

£80-150



2114
A PRIMITIVE YEW WOOD
CENTRE TABLE.

The octagonal top with radiating veneers on a square section tapering column and platform base with concave sides and ball feet, 72cm high 58cm wide.

£80-120



2115
A 19TH CENTURY
FRUITWOOD PEDESTAL
TABLE.

With a rectangular top with rounded edge on a turned column and three slender down swept legs, 71.5cm high, the top 56 x 43cm.

£80-120



2116
AN OAK LOWBOY GEORGE
III AND LATER

with three drawers and turned legs
with pad feet; 69 cms

£100-150



2117
AN 18TH CENTURY OAK
SIX PLANK COFFER.

With a broad rectangular top with chip carved ends and scratched 'geometric triangle bands, the interior with lidded candle box, the legs with pierced diamond shaped decoration, 52cm high 114cm wide, 33cm deep.

£80-120



2118
AN OAK ARMCHAIR OF
16TH CENTURY DESIGN

with carved back

£100-150



2119
AN OAK DOG KENNEL

with panelled sides and gabled roof,
probably 19th century; 49 x 48 cms

£100-200



2120
AN ELM CURVED SETTLE
c.1800

the board back with three drawers at the base; approx. 213 x 164 cms
£300-500



2129
A REGENCY MAHOGANY
SECRETAIRE BOOKCASE.

The upper section with an arched cornice above twin glazed doors with pointed arch-topped glazing bars, enclosing a shelved interior, the lower section with a secretaire drawer fitted with short drawers and pigeon holes, with lion mask ring handles, above twin panelled doors, horizontal moulding and short panel fronted sabre legs, 243cm high, 128cm wide and 50cm deep.

£400-600



2130
A VICTORIAN GILT FRAMED
WALL MIRROR.

In a heavy scrolling leaf carved frame with central rectangular mirror plate, 95cm high 80cm wide.
£100-200



2131
A NEO CLASSICAL STYLE
BRASS FRAMED WALL
MIRROR.

With a central bevel edged rectangular plate surrounded by nine similar plates with neo-classical style etched decoration, within a brass surround with twin urn ornaments, 132 x 90cm.

£150-250



2132
A LATE GEORGE THIRD
CARVED AND GILT
OVERMANTLE MIRROR.

With three rectangular bevel edged plates between column sides with scrolling capitals and below a frieze decorated with a scene of a chariot being pulled by lions with trumpet blowing angels above, beneath a frieze with gilt ball decoration, 142cm wide and 92cm high.

£100-150



2133
A 19TH CENTURY SWEDISH
GILT FRAMED WALL
MIRROR.

With a rectangular bevel edged plate with a ribbon carved frame with an elaborate cresting with an oval panel painted with a reclining classical figure and above leaf carved decoration and twin scrolling candle branches, 98 x 54cm.

£200-300



2134
A 17TH CENTURY STYLE
GESSO AND PINE WALL
MIRROR.

With a square plate with a leaf carved border and broad surround with carved corners and foliage, 81 x 89cm.

£200-250



2135
A GEORGE II STYLE CARVED
WALNUT MIRROR.

With a rectangular mirror plate within a moulded border with carved cresting above and below with scroll and leaf decoration, 93cm high x 52cm wide.

£50-80



2136
A VICTORIAN GILT FRAMED OVAL WALL MIRROR.
 With a bevel edged oval mirror plate within a beaded and moulded oval framed with exuberant ribbon tied cresting and carved foliate decoration below, 105cm x 77cm wide.
 £80-120



2137
A VICTORIAN GILT FRAMED OVAL WALL MIRROR.
 With a bevel edged oval plate within a beaded and moulded gilt frame with elaborate ribbon tied and foliate cresting, 90cm x 63cm.
 £200-300



2140
A FRENCH MECHANICAL RECLINING ARMCHAIR BY DU PONT OF PARIS.
 The mahogany frame with buttoned leather back, seat and arms with leavers to recline the back, with removable wings, with a label beneath the rear stretcher 'Du Pont Fauteuils Mechaniques, Paris' 120cm high, 72cm wide.
 £500-700



2141
A CHINESE HARDWOOD ALTAR TABLE.
 The rectangular top with central panel and scrolling ends with pierced borders and legs, 75cm high, 89cm wide and 37cm deep.
 £80-120



2142
A PAIR OF LATE 18TH/EARLY 19TH CENTURY SALON CHAIRS BY TILLIAH..
 With moulded oak frames with floral carved decoration, the hour glass shaped back above a broad seat with serpentine seat rail and cabriole front legs with conforming decoration, both indistinctly stamped to the seat rail 'TILLIA...', 88cm high, 52cm wide. (2)
 £150-200



2143
AN EARLY 19TH CENTURY EMPIRE MARBLE TOPPED CONSOLE TABLE.
 With a broad rectangular black marble top above a swept frieze with fine gilt metal mounts, the centre with blind key hole, on scrolling cabriole legs with conforming gilt metal mounts, platform base with concave front and block feet. 93.5cm high, the top 130 x 64.5cm.
 £250-350



2144
A GEORGE II MAHOGANY 'BIRD CAGE' TRIPOD TABLE.
 With a circular one piece revolving top on a 'birdcage' base with four turned uprights, on a turned tapered column and three down swept cabriole legs with pad feet. 69cm diameter, 66cm high.
 £180-250



2145
A PAIR OF GILT BRASS WALL LIGHTS OF REGENCY DESIGN
 each with five branches; 91 cms
 £500-700



2146
A KINGWOOD AND MARQUETRY SECRETAIRE OF LOUIS XV DESIGN.
 with a fitted interior behind a fall flapsimulating three drawers above four further drawers, the fronts veneered with floral marquetry on ebonised panels, mid 19th century; 65 x 122 cms
 £400-600



2147
AN EARLY 19TH CENTURY MAHOGANY CASED PIANO BY THOMAS TOMKINSON.
 The broad rectangular top with broad crossbanding, the front painted with three scenes of courting figures in landscapes, the instrument with six octaves, numbered 9826 internally, on turned legs and casers, with a single peddle. 867cm high, 179cm wide and 72cm deep.
 £100-150



2148

A GEORGE IV ROSEWOOD DAVENPORT.

With a sloping leather lined writing surface and galleried top, enclosing an interior with a single small drawer and three dummy drawers and a rotating inkwell drawer to the side, the top pulling forward on a base with twin brushing slides and three short graduated drawers, and conforming dummy drawers, on lobed bun feet and recessed casters, fitted with Bramah locks throughout, 86cm high, 52cm wide and 55cm deep.

£250-350



2149

A REPRODUCTION EGYPTIAN THRONE CHAIR.

A fine copy of the Throne of Princess Sitamun, daughter of Pharaoh Amenhotep III (1391-1353). With all over gilt metal mounts, the back with two seated figures sitting back to back with servants in attendance, the sides with further attendant figures, on animal paw legs on gilt feet, the seat with woven rush, and projecting gilt female heads, 870cm high, 56cm wide and 58cm deep.

£300-500



2150

A REGENCY ROSEWOOD SOFA TABLE.

With a rectangular top with drop flap ends above a single blind fronted frieze drawer and beeded border, on a central stepped column, platform base and lobed feet with recessed casters, 70cm high, 169 x 65cm open.

£100-200



2151

A REGENCY ROSEWOOD BRASS INLAID BREAKFAST TABLE.

With a broad circular top with two lines of brass stringing and broad crossbanding, tipping on a square column and platform base with four scrolling 'sabre' legs with cast brass cap castors, 72cm high, 127cm wide.

£300-500



2152

A GEORGE III MAHOGANY FRAMED LOW BACKED SETTEE.

The settee upholstered in green velvet, with low rectangular back and similar arms on square legs and stretchers with brass casters, 83cm high, 184cm wide and 74cm deep.

£200-300



2153

A WALL MIRROR OF 18TH CENTURY ITALIAN DESIGN

with carved frame, engraved mirror plate and two candle branches; 86 x 43 cms

£200-300



2154

A REGENCY ROSEWOOD SECRÉTAIRE IN THE EMPIRE STYLE.

with brass mounts, simulated marble top, satinwood faced interior and doors enclosing shelves; 87 x 104 cms

£400-600



2155

A WILLIAM IV SATINWOOD AND MAHOGANY DAVENPORT

with fitted interior, side drawers and slides, the writing slope on fluted columns; 49 x 84 cms

£300-400



2156

A VICTORIAN CAMPAIGN WASHSTAND

the three oval mahogany tiers on brass supports; 70 x 87 cms

£200-300



2157

A GEORGE III MAHOGANY HALL CHEST

with hinged top, drawers and dummy drawers in the front and reeded pilasters; 180 x 105 cms

£100-200



2158
A FINE PAIR OF REGENCY ROSEWOOD OPEN FRONTED BOOKCASES.

With decorative ripple moulded cornices on scrolling brackets above open shelves, the lower section with similar moulded border and plinth base with further adjustable open shelves, 209cm high, 90cm wide and 36cm deep.

£500-800



2159
A 19TH CENTURY MAHOGANY ENCLOSE WASHSTAND

with hinged top on turned legs, 92 cms wide

£50-100



2160
A GEORGE III MAHOGANY KNEEHOLE DESK

with frieze drawer below a slide, central recessed cupboard, flanked by three drawers on each side; 91 x 83 x 50 cms

£400-600



2161
A PAIR OF INDIAN BRASS STANDS

each with circular base and five shaped tiers approx. 104 cms high, 19th century, together with a Chinese bronze stand; 139 cms high (3)

£150-250



2162
A VICTORIAN ROSEWOOD LIBRARY TABLE

the rounded rectangular top with frieze drawers on trestle ends; 152 x 70 cms

£250-350



2163
A FRENCH SATINWOOD AND EBONISED PIER CABINET,

19th century, the shaped rectangular top above a frieze inset with two porcelain roundels, the glazed doors flanked by fluted columns enclosing an interior with two glass shelves, fitted for electricity, height 101cm, width 102cm, depth 43cm

£200-300



2164
A MATCHED SET OF EIGHT REGENCY MAHOGANY DINING CHAIRS.

Comprising six chairs, two armchairs and four standard with broad top rails and carved cross rails above overstuffed seats on turned tapering ring turned legs, and two similar chairs with sabre legs.

£100-200



2165
A PAIR OF LATE VICTORIAN/EDWARDIAN UPHOLSTERED ARM CHAIRS.

Each with raised, shaped, rectangular backs, arm supports and seats upholstered in a pink and cream fabric, on square tapering legs with ceramic casters, 93cm high, 68cm wide and 68cm deep.

£150-250



2166
A CHINESE HARDWOOD ALTAR TABLE

the rectangular top with scrolled ends and the frieze carved on both sides; 140 x 42 x 81 cms

£500-700



2167
A CHINESE HARDWOOD OCCASIONAL TABLE

the circular top inset with a porcelain plaque painted in a "millefiori" design pierced frieze and legs linked by stretchers; 74 cms wide x 79 cms high

£500-700



2168
A GEORGE I/II WALNUT CHEST ON STAND.

The upper section with a moulded cornice above two short and three long graduated drawers, the base with a further long drawer, on cabriole legs with pad feet 115cm high, 99cm wide and 57cm deep.

£300-400



2169

A GEORGE III MAHOGANY KNEE HOLE DESK.

The rectangular top with a moulded border above a brushing slide and a single frieze drawer above a central cupboard and two columns of three short drawers, on bracket feet, 83cm high, the top 97 x 55cm.

£300-400



2170

A VICTORIAN MAHOGANY WELLINGTON CHEST.

With a rectangular top above eight graduated short drawers with turned knob handles and locking upright, on plinth base, 130cm high, 61cm wide, 44cm deep.

£300-500



2171

AN OAK DRESSER

the back with open shelves and small drawers, the base with drawers & cupboards; 18/19th century and later, 197cm high, 152cm wide and 51cm deep.

£800-1200

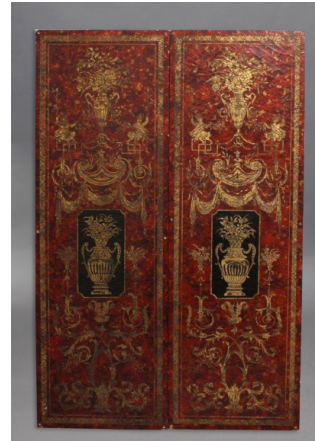


2172

A PAIR OF FRENCH EMPIRE MARBLE TOPPED CONSOLE TABLES.

Each with rectangular veined grey marble tops above a single frieze drawer fronted by a gilt metal mount with two facing swans drinking from a fountain, the drawer flanked by flowering roses, above mirrored backs and shelves, with turned mahogany columns with gilt metal mounts, on rounded legs, 96cm high, 77cm wide and 31cm deep. (2)

£800-1500



2173

A PAIR OF VENETIAN STYLE DECORATIVE LACQUERED PANELS.

The two large rectangular panels decorated with vases of flowers against a black ground surrounded by gilt decoration of flowers, exotic figures and scrolls against a red ground, each 184 x 61cm. (2)

£150-250



2174

A PAIR OF LOUIS XVI STYLE WINE TABLES.

Each with circular marble tops and pierced and cast gilt metal borders, on turned columns and three downswept legs with conforming gilt mounts, 57cm high, 34cm wide. (2)

£50-80



2175

A PAIR OF LOUIS XVI STYLE SALON CHAIRS,

19th century, the gilt frames with pierced ribbon top rails on reeded legs, with upholstered padded seats and backs, 95cm high

£200-300



2176

A PAIR OF QUEEN ANNE STYLE WING BACK ARM CHAIRS.

With arch topped rectangular backs, outscrolling arm rests and all over upholstery with leaves against a cream ground, on short cabriole front legs with ball and claw feet, 108cm high, 79cm wide and 73cm deep.

£200-300



2177
A GEORGE III STYLE
MAHOGANY FRAMED
CHEVAL MIRROR.
 With a rectangular bevel edged plate within an arch topped surround with vase shaped brass finial, and above two turned horizontal rails and down swept legs with brass cap casters, 187cm high, 67cm wide.
 £100-150



2178
A HARDWOOD CENTRE
TABLE OF FRENCH DESIGN
 rectangular on fluted legs; 83 x 56 cms
 £100-150



2179
A VICTORIAN
OCCASIONAL TABLE
 ebonised and gilt with burrwood and banded panels, galleried undershelf; 52 cms max.
 £100-150



2180
A GEORGE III MAHOGANY
CELLARETTE
 crossbanded and on tapering legs; 39 cms
 £50-100



2181
A PAIR OF OPEN
ARMCHAIRS IN GEORGE II
STYLE
 the mahogany frames with scrolled arms & carved cabriole legs, 107cm high, 69cm wide.
 £50-100



2182
AN OAK JOINT STOOL OF
16TH CENTURY DESIGN
 with gouged frieze and fluted legs; 43 cms
 £50-100



2183
AN OAK SMALL COFFER IN
17TH CENTURY STYLE
 with carved front; 54 cms
 £50-100



2184
AN OAK THREE DRAWER
DRESSER BASE.
 With a broad rectangular top with a moulded edge above three double fronted drawers above two panelled cupboard doors, 90cm high, 203cm wide and 54cm deep.
 £200-300



2185
A RED PAINTED CANVAS
STAND
 59 cms high and a Fire Bucket, each with remnants of the Royal Arms (2)
 £100-150



2186
A LOUIS XVI UPHOLSTERED
ARMCHAIR.
 With a carved scrolling frame with upholstered back, seat and arm supports, the broad seat on a conforming swept and carved seat rail and scrolling cabriole legs with leaf carved feet, 89.5cm high, 66cm wide.
 £300-500



2187
A SET OF FOUR DUTCH
MARQUETRY DINING
CHAIRS.
 With tall 'Queen Anne' style backs with allover floral and bird marquetry in a vase, with drop in seats on curved seat rails with conforming marquetry and cabriole front legs with pointed pad feet, 106cm high.
 £300-500



2188
A GEORGE II DROP FLAP
TABLE.
 With an oval top with moulded border, on turned tapering legs with pad feet, 72cm high, the top 106 x 103cm (open).
 £80-120



2189

A VICTORIAN WALNUT AND MARQUETRY PIER CABINET.

With a rectangular top above a horizontal frieze with central floral decoration, above a single paneled door with a decorative vase of flowers within a gilt metal border, flanked by conforming side panels and plinth base with wavy base, 111cm high, 87cm wide and 34cm deep. With key.

£300-400



2190

A 19TH CENTURY FRENCH EMPIRE STYLE SETTEE.

With a broad Mahogany show wood frame with satinwood stringing, the upholstered back, seat and cushions between scrolling arms and outswept legs, 93cm high, 198cm wide and 69cm deep.

£200-400



2191

A JAPANESE LACQUER WORK TABLE.

Black and gold lacquered, the rectangular top with peacocks among chrysanthemums and pine branches, fitted interior above a drawer and workbag on trestle base, c.1870; 80 x 51 cms

£400-600



2192

A GILTWOOD DISPLAY TABLE

with glazed top and cabriole legs; 63 x 43 cms

£200-300



2194

A REGENCY MAHOGANY BREAKFAST TABLE

with frieze drawers on four turned supports with splayed legs; 83 cms wide

£100-200



2195

A CONTINENTAL EARLY 19TH CENTURY MAHOGANY AND BRASS SIDE CHAIR.

With a rectangular back with a narrow top rail on reeded and turned uprights, with an over stuffed seat with brass rail, on turned and reeded front legs and outswept back legs with turned 'x' frame stretcher. 84cm high, 53cm wide.

£50-80



2196

A FOOTSTOOL OF GEORGE I DESIGN

with walnut cabriole legs and pointed pad feet, tapestry top; 49 x 42 cms

£100-200



2197

A VICTORIAN AESTHETIC PERIOD CARD TABLE.

The rectangular top with rounded ends with burr walnut veneer with aesthetic style marquetry and ebonised banding, with a baize lined playing surface, on four turned uprights with a central fluted boss and four downswept legs with recessed ceramic casters, 72cm high, the top 92 x 46 cm closed.

£300-500



2198

A REGENCY ROSEWOOD SIDE TABLE.

With a rectangular top above a single frieze drawer stamped 'Bulstrode Marylebone' and 'Paddington', on trestle end supports with carved foliate decoration and downswept legs and brass casters, 72cm high, the top 40.5 x 61cm.

£100-150



2199
A MAHOGANY BOOKCASE
GEORGE III AND LATER.

the top with broken pediment, the upper part with astragal glazing of lancet design, the base with lancet moulding; 134 x 26 cms
£300-400



2200
A LATE GEORGE III
MAHOGANY READING OR
MUSIC STAND.
With a rectangular top with canted corners and raised brass beading, the top rising and swivelling on an upright, with tapering spiral fluted column with three downswept reeded legs on short feet, 73 - c130cm high, the top 46 x 35.5cm
£100-150



2201
A VICTORIAN MAHOGANY
METAMORPHIC DUMB
WAITER.
The rectangular top with moulded border rising to create a two-shelf dumb waiter, on tapering octagonal legs with platform bases and scrolling feet with recessed castors, 108cm open 78 cm closed, the top 60 x 138cm.
£150-250



2202
A LOUIS XV STYLE
KINGWOOD BUREAU PLAT.
The rectangular top with leather lined writing surface and gilt metal mounted serpentine edges and leaf mounted corners, above three oak lined frieze drawers and conforming dummy drawers, on slender cabriole legs with gilt metal mounted knees and paw feet, 76cm high, the top 127 x 67cm.
£400-600



2203
A LARGE LIBRARY SIZE
REVOLVING BOOKCASE.
The square bookcase with three graduated levels of shelves on a four part base with turned uprights and chamfered structure and brass casters, 152cm high, the top 72cm square.
£80-120



2204
A SET OF FOURTEEN
GEORGE III STYLE
MAHOGANY DINING
CHAIRS.
Comprising twelve standard and two arm chairs, each with scrolling top rails with central fan motif above a pierced splat, drop in seat with needlework cover and square legs with 'H' form stretchers, 98cm high, 52cm wide, the arm chairs 101cm high and 62cm wide. (14)
£300-500



2205
A LATE GEORGE III
MAHOGANY BOW FRONT
SERVING TABLE.
The broad bow fronted top with crossbanded and strung border above a plain frieze with moulded border, fitted with two flush fitting end drawers, on square tapering legs, 91cm high, 146cm wide and 68cm deep.
£180-250



2206
A REGENCY MAHOGANY
SERVING TABLE.
The rectangular top with beeded border and a raised curved back, on four tall, turned tapering legs with brass ball castors, 122cm high, 183cm wide, 55cm deep
£100-200



2207

**A LARGE FOUR FOLD
TAPESTRY COVERED
SCREEN.**

A four leaf folding screen. the rectangular panels covered in Belgian style machine made tapestry depicting two elegantly dressed couples in a coastal setting with sailing ships to the distance. 210cm high, 264cm wide.

£80-120



2208

**A SET OF THREE
VICTORIAN MAHOGANY
HALL CHAIRS.**

Each with moulded backs with scrolling top rails and central panels above solid straight fronted seats with turned tapering front legs, 90cm high 42cm wide. (3)

£50-80



2209

**A GEORGE III MAHOGANY
FRAMED SOFA.**

A Hepplewhite style sofa with a rectangular upholstered and side panels with reeded arms fronted by turned 'Faux Bamboo' uprights, on square tapering legs with brass cap casters, 92cm high, 196cm wide and 80cm deep.

£400-600



2210

A GEORGE III SOFA

rectangular on mahogany turned legs at the front; approx. 87cm high, 193cms wide and 72cm deep

£200-300



2211

**A LOUIS XVI STYLE MARBLE
TOPPED COMMODE.**

The variegated marble top with serpentine front and moulded border above two bow fronted drawers with all over scrolling foliate marquetry, the corners with gilt metal mounts, with confirming handles, key escutcheons and feet, 87cm high, 118cm wide and 47cm deep.

£300-400



2213

**A GEORGE III MAHOGANY
SECRETAIRE BOOKCASE**

the upper part with astragal glazed doors and interior drawers; the base with fitted secretaire above six short and a long drawer; 122 x 229 cms

£700-1000



2214

**A QUEEN ANNE STYLE
'MULBERRY' VENEERED
CHEST OF DRAWERS.**

With a rectangular top with moulded overhanging edge above three small and three long graduated drawers with 'mulberry wood' type veneers and walnut banding, the drawers oak lined with moulded divisions, on a moulded base with bun feet, 18th century and later, 96cm high, 105cm wide, 59cm deep.

£400-600



2215

**A SET OF THREE SPANISH
STYLE X FRAMED ARM
CHAIRS.**

Three walnut chairs with three curved cross rails and turned finials to the uprights, with leather upholstered seats and scrolling front legs.

£80-120



2216

**AN UNUSUAL GEORGE II
MAHOGANY BUREAU.**

With a sloping fall with moulded edge enclosing a fitted interior with four tiers of staggered drawers comprising six, two, one and three drawers with brass knob handles, above an arrangement of three short, two short and two long graduated drawers with ring handles, on bracket feet, 106cm high, 96cm wide and 49cm deep.

£300-500



2217

**A VICTORIAN GILT WOOD
UPHOLSTERED LONG
STOOL.**

The rectangular top upholstered, on a fluted and ribbon frieze and four short tapering legs. 18cm high, the top 40 x 109 cm.

£50-80



2218

A LACQUER WORK CHINOISERIE SIDE TABLE.

The broad rectangular top worked with a scene of Chinese figures amongst trees and buildings, against a black ground within a wavy border of gilt flowers against a yellow ground, the top above three frieze drawers with moulded fronts with conforming lacquer decoration, on square section cabriole legs with pointed feet. The table late 17th or early 18th century and later decorated. 76cm high, 176cm wide and 61cm deep.

£200-300



2219

A GEORGE II MAHOGANY FOLD TOP TEA TABLE.

The rectangular top above a single frieze drawer with brass knob handles and double gateleg action to support the folding top, the square tapering legs with block feet, 73cm high, the top 76cm x 35cm (closed),

£100-150



2220

A GILT BRASS CHANDELIER

the ten scrolling branches each for two lights and hung with prismatic drops; approx. 76 x 90 cms

£400-600



2221

A VICTORIAN MAHOGANY BUTLERS TRAY AND STAND.

The rectangular tray with raised border and twin pierced hand holds, on a folding turned base, 84cm high 72cm wide and 49cm deep.

£100-150



2222

A REGENCY ROSEWOOD AND BRASS STRUNG TEA TABLE.

The rectangular fold top with rounded corners and two lines of brass stringing and polished interior, on a ring turned tapering column and platform base and four ebonised winged lions paw feet, 72cm high, 91.5cm wide, 45cm deep.

£400-600



2223

A LATE GEORGE III MAHOGANY WINE COOLER.

A sarcophagus form wine cooler with canted corners and broad flat top enclosing a lead lined fitted interior, the sloping sides with vine cast carrying handles, above a reeded base and four carved animal paw feet with recessed casters, 45cm high, 68cm wide, 46cm deep, with key.

£300-500



2224

A 19TH CENTURY JAPANESE THREE FOLD SHIBUYAMA SCREEN.

A dwarf three fold screen, the central broad panel with two Japanese men in a landscape, the trees with Mother of Pearl flowers, above and below similarly decorated pierced panels, flanked by narrow panels, on short legs, 107 cm high, 115cm wide (open)

£80-120



2225

A SET OF EIGHT LATE REGENCY MAHOGANY DINING CHAIRS.

Each with broad curved backs with scrolling ends, narrow cross rails and green upholstered drop in seats, on moulded sabre legs. stamped 16526 to the seat rail, 86cm high, 46cm wide.

£100-200



2226

A GEORGE III MAHOGANY TEA TABLE.

The demi lune tea table with satinwood strung edges and polished interior above a wavy edged frieze, on square tapering legs, 73cm high the top 91 x 89cm (open).

£100-200



2227

A GEORGE III MAHOGANY ARM CHAIR.

With an arched top rail above a pierced and carved back splat with carved leaf decoration, with out swept arms with carved grips, with over stuffed seat and moulded tapering front legs, 94cm high. 66cm wide.

£60-80



2228

GEORGE III MAHOGANY
SERPENTINE SIDE TABLE,
the shaped rectangular top above
a single drawer on slender cabriole
legs, height 74cm, width 71cm,
depth 50cm

£150-250



2229

A VICTORIAN MAHOGANY
DROP FLAP DECEPTION
TABLE,
with fall front enclosing a vacant
interior, on tapering legs, height
71cm, width 68cm

£100-150



2230

AN EDWARDIAN INLAID
MAHOGANY BIJOUTERIE
TABLE,
the rectangular top on tapering
legs and curved 'x' stretchers, 74cm
high, 61cm wide, 42cm deep

£300-400



2231

A GEORGE III MAHOGANY
WINE TABLE,
the octagonal galleried top on
tripod base, 69cm high, 40cm wide
£600-800



2232

A 19TH CENTURY CHINESE
HARDWOOD TRAVELLING
TABLE,
the shaped rectangular top carved
with dragons and characters and
bamboo effect edging, 46cm high,
56cm wide

£200-300



2233

A SPANISH WALNUT OPEN
ARMCHAIR
with leather seat and back panel
and flat scrolled arms

£100-200



2234

A GEORGE III MAHOGANY
DRESSING TABLE MIRROR.
With a shield shaped mirror on
scrolling uprights with urn shaped
finials and ivory roundels, on a
serpentine fronted three drawer
box - base with brass knob handles,
on small ogee bracket feet, 78cm
high, 62cm wide and 28cm deep.

£80-150



2235

A GEORGE III MAHOGANY
TRIPOD TABLE
with dished circular top; 58 cms dia.
£50-100



2236

A GEORGE III MAHOGANY
TRIPOD TABLE
with circular top on turned pillar;
76 cms dia.
£50-100



2237

A VICTORIAN WALNUT
AESTHETIC PERIOD SIDE
CABINET BY H. OGDEN OF
MANCHESTER.

With a raised shelf and mirror back
flanked by twin panels of marquetry
and incised decoration, the top
with wavy grained walnut and
moulded border, above a central
panelled door with conforming
ebonised and incised decoration,
flanked by glazed doors enclosing
shelved interiors, on a plinth
base, the top of the central door
stamped 'H. Ogden Manchester
4427', 137cm high, 152cm wide and
39cm deep.

Apparently a specific commission
for the vendors grandmother.

£200-400



2238

A SMALL LATE 18TH
CENTURY TRIPOD TABLE.

With a circular top on a turned
column with three downsept
slender cabriole legs with pad feet,
possibly fruit wood, 68cm high x
43cm wide.

£80-120



2239
A SPINDLE BACK LOW OPEN ARMCHAIR
 of ash, elm and fruitwood
 £60-80



2240
A GEORGE I BURR WALNUT VENEERED FALL FRONT SECRETAIRE CABINET.
 With a projecting moulded top above a bow fronted blind drawer and a fall enclosing a fitted interior with a central cupboard containing three small drawers, surrounded by pigeon holes and further small drawers, the three upper sections concealing hidden drawers, the lower section with two short and two long graduated drawers, on bun feet, early 18th century and later, 166cm high, 110cm wide and 49cm deep
 £800-1200



2241
A GEORGE II MAHOGANY BUREAU
 with fall flap concealing a fitted interior, bombe sides and front with font drawers on ogee bracket feet, with finely cast handles and escutcheons, 74 cms wide (max) x 90 cms high x 46 cms deep
 £1000-1500



2242
A FINE PAIR OF VICTORIAN WALNUT AND MARQUETRY PIER CABINETS.
 Each with rectangular tops with canted front corners above downswept sides with scrolling floral marquetry and gilt brass mounts, above a similar frieze and doors with central panels of marquetry flowers and grasses within a gilt brass rococo revival mount, the doors enclosing interiors with velvet lined shelves, on conforming bases, the sides with four gilt patera. With matching keys, 124cm high, 74cm wide and 40cm deep. One with a paper label for 'T.H. Filmer's Cabinet Chair Upholstery ... 32 Berners Street'.
 £800-1200



2243
A REGENCY MAHOGANY BREAKFAST TABLE
 with frieze drawer on pillar and four reed splayed legs; 84 cms wide
 £100-200



2250
ORIENTAL CARPET, PROBABLY KHORASAN, CIRCA 1920.
 The pale lemon field of large Cypress trees and further trees in bloom surrounded by animals and plants enclosed by reciprocal indigo and raspberry borders flanked by triple guard stripes, 390 x 280cm
 £300-500

2251
KAZAK RUG, CENTRAL CAUCASUS, LATE 19TH C.
 The madder field with four flower head medallions enclosed by reciprocal borders of serrated semi guls flanked by guard stripes of polychrome flower heads and barber poles, 175 x 115cm
 £250-350

2252
GENDJE RUG, CENTRAL CAUCASUS, CIRCA 1900
 The madder field with four latch hook guls enclosed by ivory and polychrome 'Kufic' borders, mustard guard stripes of octagons and arrow head minor guard stripes, 245 x 145cm
 £250-350



2253
CHINESE CARPET, EARLY 20TH CENTURY
 The cream field of Taoist motifs and semi naturalistic flowers centred by a floral roundel framed by spandrels and cobalt borders of flowering vines flanked by an inner mustard guard stripe, 365 x 270cm
 £400-600



2254
PAIR OF KASHAN RUGS, Central Iran, circa 1960, each with a cream lattice field of boteh enclosed by borders of further boteh flanked by double guard stripes, 215 x 130cm
 £400-600



2255
FERAGHAN CARPET, WEST IRAN, CIRCA 1910
 The indigo field with an all over Herati field enclosed by terracotta borders of meandering vines and samovar motifs flanked by ivory carnation guard stripes, 325 x 255cm
 £350-500



2256

KASHAN CARPET, CENTRAL IRAN, CIRCA 1960

The raspberry field of vines around a medallion framed by indigo spandrels and meandering vine borders flanked by guard stripes, 355 x 255cm

£250-350



2257

KIRMAN CARPET, SOUTH EAST IRAN, CIRCA 1950

The pale aubergine field sparsely decorated with floral sprays centred by a pistachio green medallion framed by spandrels and floral borders of semi naturalistic roses, 400 x 300cm

£250-350



2258

TABRIZ CARPET, NORTH WEST IRAN, CIRCA 1950

The indigo field of flowering plants around an ivory stepped medallion framed by spandrels and floral borders flanked by meandering vine guard stripes, 390 x 290cm

£300-400



2259

TABRIZ CARPET, NORTH WEST IRAN, CIRCA 1950

The polychrome diamond lattice field of flower heads enclosed by reciprocal borders of leafy plants flanked by guard stripes, 315 x 200cm

£250-350



2260

KUBA RUG, NORTH EAST CAUCASUS, CIRCA 1910

The tomato red field centred by a stylised flower head medallion and two stepped medallions enclosed by spandrels and narrow ivory borders flanked by outer guard stripes,

£150-250



2261

BALUCH RUG, KHORASAN EAST IRAN, CIRCA 1900

The compartmentalised diamond lattice camel ground enclosed by reciprocal arrow head borders and guard stripes, 130 x 90cm, together with a Baluch Prayer Rug, 145 x 70 (2)

£120-180



2262

ORIENTAL RUG, CIRCA 1960

The cream ground centred by an oval cusped medallion surrounded by urns issuing flowers flanked by floral spandrels and floral raspberry borders.

£120-180



2263

KASHGAI CARPET, SOUTH WEST IRAN, CIRCA 1930

The midnight blue diamond lattice field of terracotta medallions enclosed by serrated leaf and rosette borders flanked by guard stripes, 260 x 130cm

£200-300



2264

NARROW NORTH WEST PERSIAN RUNNER, CIRCA 1900

The indigo field with columns of stylised plants enclosed by ivory leaf and calyx borders flanked by carnation guard stripes and barber poles, 330 x 95cm

£250-350



2265
SILK PILED PRAYER RUG,
PROBABLY KASHMIR, CIRCA
1970,

The ivory field with central plant
beneath the Mihrab flanked by two
further trees and borders of exotic
birds and guard stripes, 110 x 85cm
£60-90



2266
NORTH WEST PERSIAN
RUNNER, CIRCA 1920

The indigo field with a column
of stepped diamond medallions
enclosed by brick red borders of
angular serrated leafy vines and
rosettes, flanked by guard stripes,
430 x 105cm
£300-500



2267
IRANIAN PRAYER RUG,
PROBABLY TABRIZ OR
KASHAN, CIRCA 1930

The terracotta field with urn issuing
flowers flanked by a pair of columns
beneath a hanging lamp and Mihrab
enclosed by indigo borders of
meandering vines and palmettes,
flanked by carnation guard stripes,
200 x 125cm

£150-250



2268
KARABAGH PRAYER RUG,
SOUTH CAUCASUS, CIRCA
1900

The chocolate field with rows of
stylised plants beneath an angular
Mihrab enclosed by pale lemon
borders of octagons flanked by
stylised vine guard stripes, 135 x
80cm

£100-200



2269
NORTH WEST PERSIAN
RUG, CIRCA 1920

The indigo diamond lattice field of
polychrome stylised flower heads
enclosed by ivory floral borders
flanked by triple barber poles, 195
x 110cm

£250-350



2270
TEKKE RUG, EMIRATE OF
BUKHARA, CIRCA 1900

The raspberry field with two rows
of quartered guls enclosed by
multiple narrow borders, 195 by
115cm

£100-200



2271
TEKKE ENSI, CIRCA 1900

The quartered field of candelabra
motifs beneath a niche flanked by
serrated leaf borders and a double
elem beneath, 135 x 130cm

£150-250



2272
GHOM SILK PRAYER RUG,
CENTRAL IRAN, CIRCA 1960

The field with urn issuing flowers
beneath a Mihrab, framed by
floral borders and carnation guard
stripes, 104 x 105cm

£40-60



2273

AZERI RUNNER, NORTH
WEST IRAN, CIRCA, 1930

The indigo field of stylised plants around three stepped medallions framed by pale indigo serrated leaf and calyx borders flanked by guard stripes, 290 x 120cm

£250-350



2274

LARGE KIRMAN CARPET,

South East Iran, c.1925, the aubergine field richly decorated with scrolling vines and flowers, enclosed by similar borders and plain outer guard stripes, 520cm x 290cm

£800-1200



2275

A SERAPI CARPET,

Iranian Azerbaijan, The madder field centred by a typical indigo and salmon pink cruciform medallion framed by spandrels and borders of samovar motifs, serrated leaves and angular vines flanked by double guard stripes, 574cm x 334cm

£1500-2500



2276

A HERIZ CARPET

c1870, Iranian Azerbaijan, The midnight blue field richly decorated with large serrated leaves, flowers and angular vines enclosed by deep terracotta borders of flower heads meandering geometric vines and samovar devices flanked by double guard stripes. 570cm x 370cm

£2000-3000



2277

A HERIZ CARPET

c1870. Iranian Azerbaijan, The stepped terracotta fields centred by an indigo and ivory medallion surrounded by angular vines framed by spandrels and terracotta borders of flower heads, angular vines and samovar devices flanked by ice blue outer guard stripes. 516cm x 370cm

£2000-3000



2278

A HERIZ CARPET

c1870. Iranian Azerbaijan, The abrashed terracotta field centred by a salmon pink and indigo medallion framed by ice blue spandrels and terracotta borders of stylised plants and angular vines flanked by carnation outer guard stripes. 642cm x 336cm

£2500-3500